

매개변수 곡선의 미분

(Differential of the parameter curve)

Differential of the parameter curve

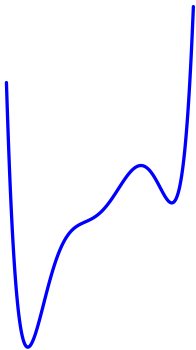
▶ Start

▶ End

Differential of the parameter curve

▶ Start

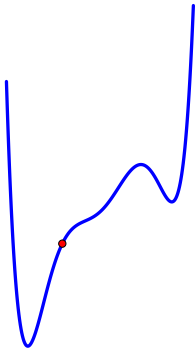
▶ End



Differential of the parameter curve

▶ Start

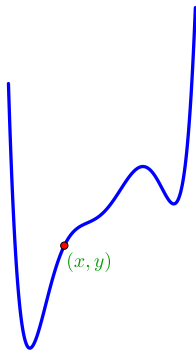
▶ End



Differential of the parameter curve

▶ Start

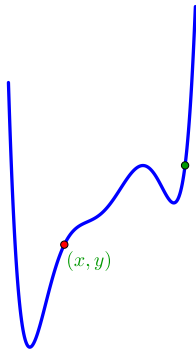
▶ End



Differential of the parameter curve

▶ Start

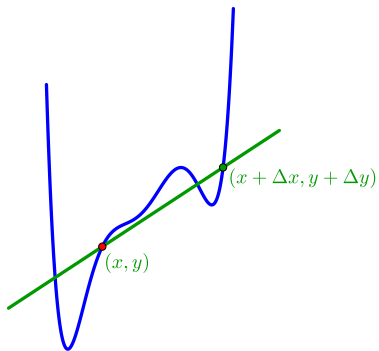
▶ End



Differential of the parameter curve

▶ Start

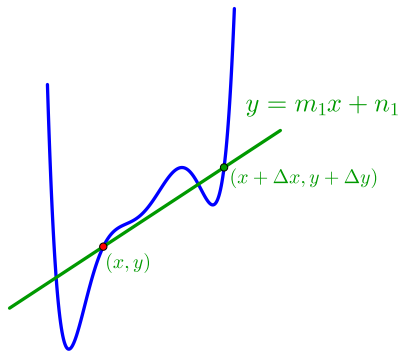
▶ End



Differential of the parameter curve

▶ Start

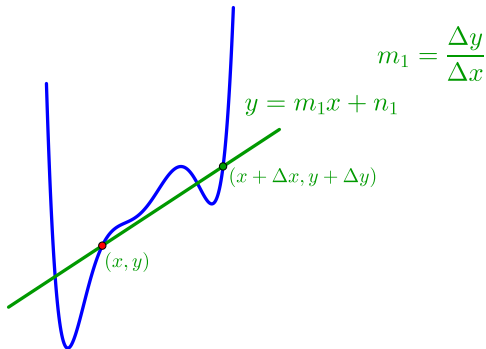
▶ End



Differential of the parameter curve

▶ Start

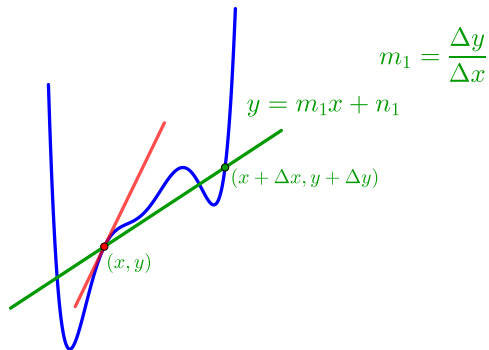
▶ End



Differential of the parameter curve

▶ Start

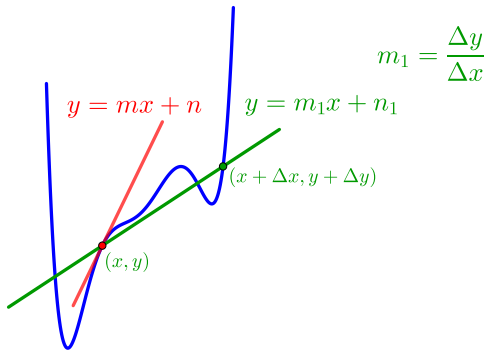
▶ End



Differential of the parameter curve

▶ Start

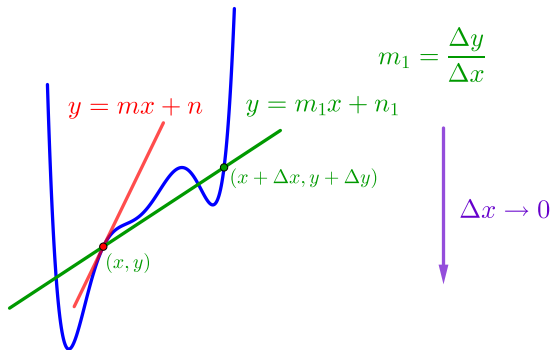
▶ End



Differential of the parameter curve

▶ Start

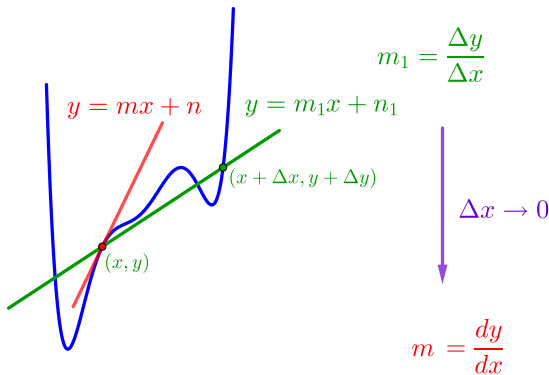
▶ End



Differential of the parameter curve

▶ Start

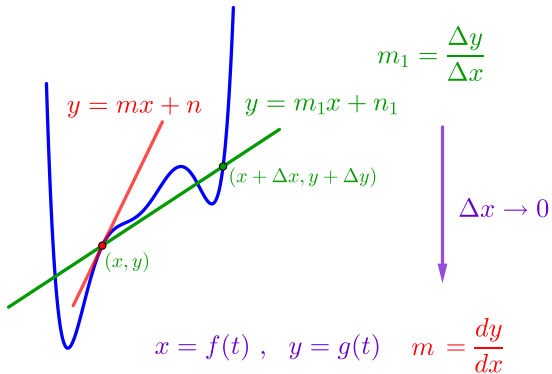
▶ End



Differential of the parameter curve

▶ Start

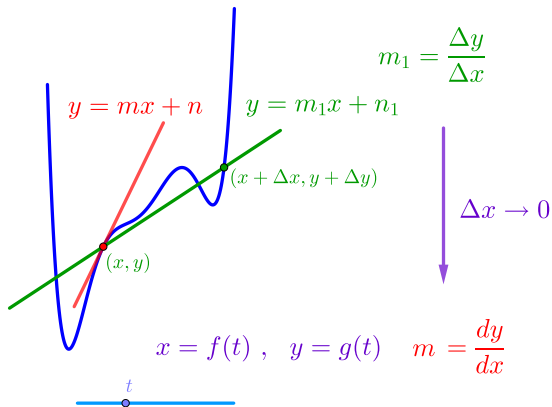
▶ End



Differential of the parameter curve

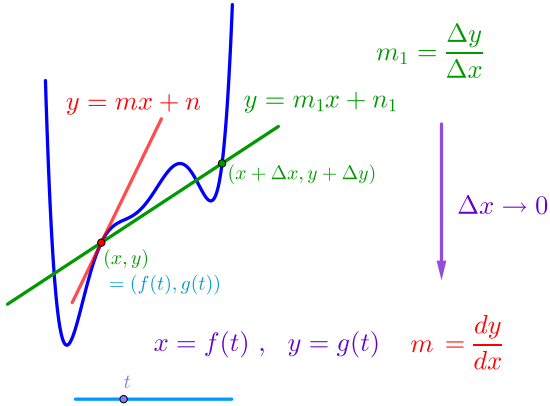
▶ Start

▶ End



Differential of the parameter curve

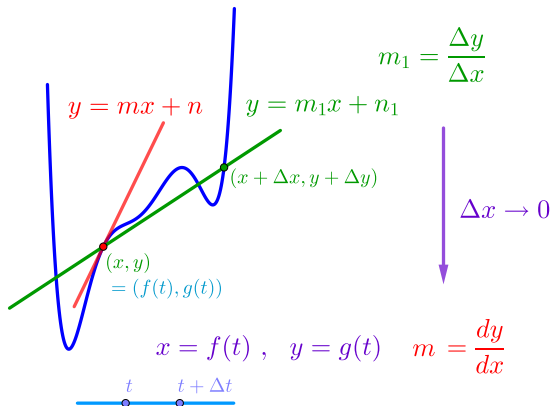
▶ Start ▶ End



Differential of the parameter curve

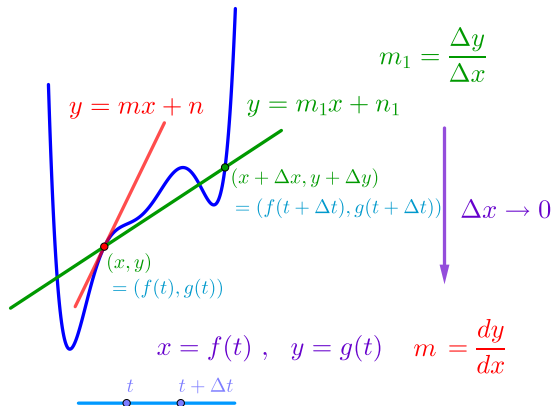
▶ Start

▶ End



Differential of the parameter curve

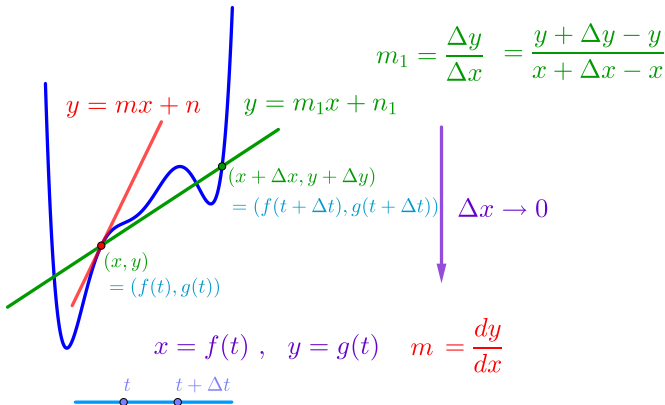
▶ Start ▶ End



Differential of the parameter curve

▶ Start

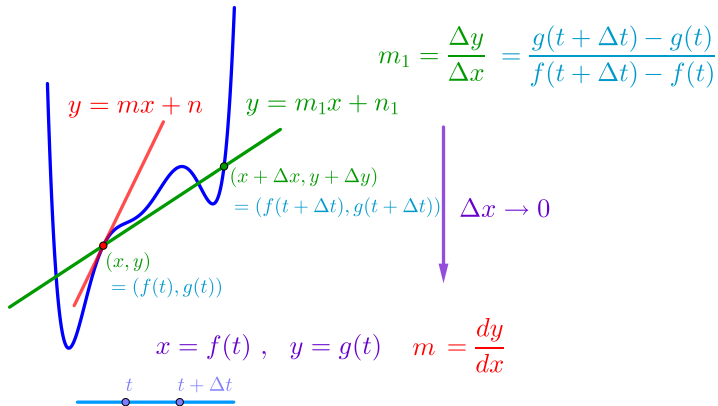
▶ End



Differential of the parameter curve

▶ Start

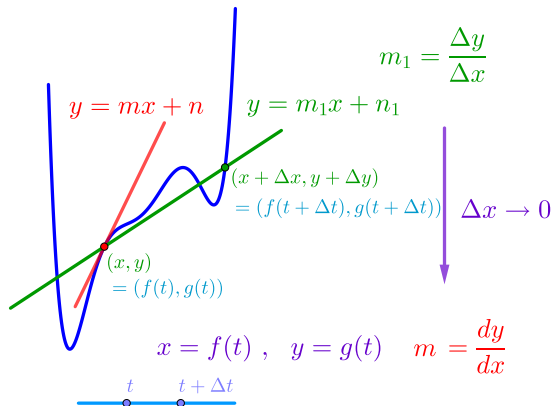
▶ End



Differential of the parameter curve

▶ Start

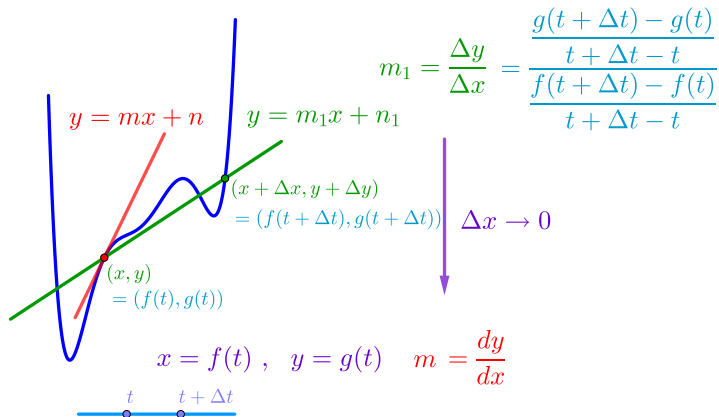
▶ End



Differential of the parameter curve

▶ Start

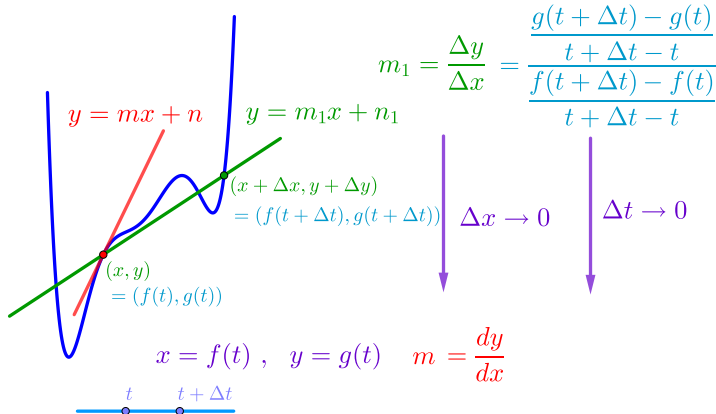
▶ End



Differential of the parameter curve

▶ Start

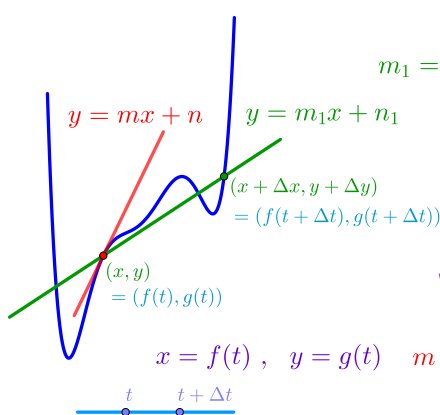
▶ End



Differential of the parameter curve

▶ Start

▶ End



$$m_1 = \frac{\Delta y}{\Delta x} = \frac{g(t + \Delta t) - g(t)}{f(t + \Delta t) - f(t)}$$

$$\Delta x \rightarrow 0$$

$$\Delta t \rightarrow 0$$

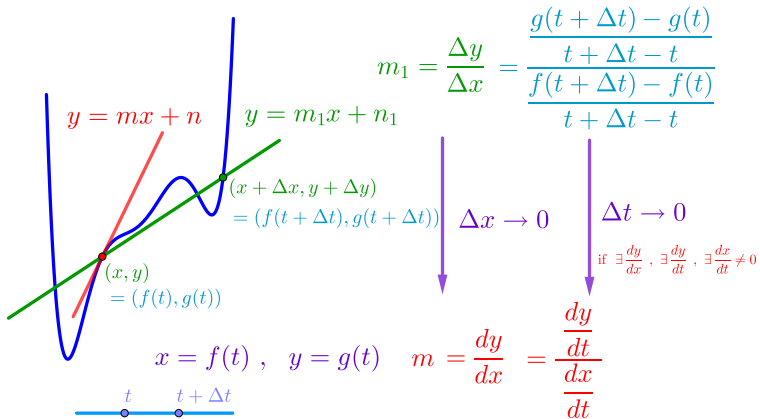
if $\exists \frac{dy}{dx}, \exists \frac{dy}{dt}, \exists \frac{dx}{dt} \neq 0$

$$m = \frac{dy}{dx}$$

Differential of the parameter curve

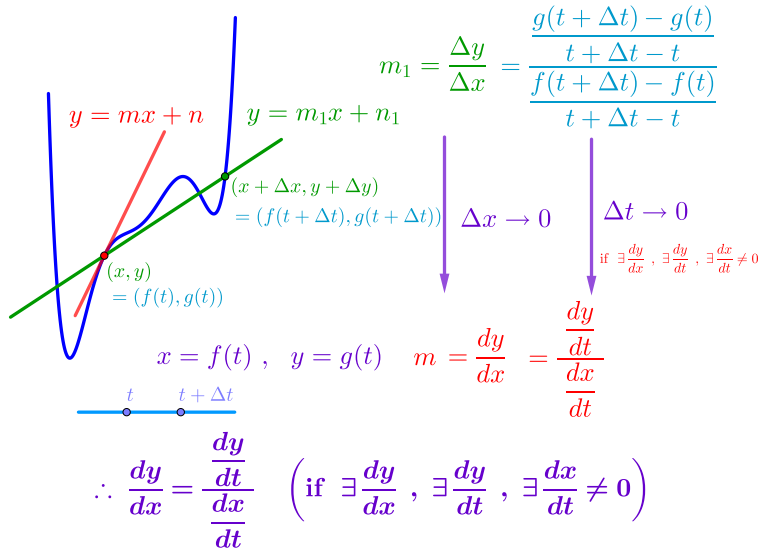
► Start

► End



Differential of the parameter curve

▶ Start ▶ End



Github:

<https://min7014.github.io/math20240407001.html>

Click or paste URL into the URL search bar,
and you can see a picture moving.