

Two straight lines perpendicular to a plane are parallel to each other.

한 평면에 수직인 두 직선은 서로 평행하다.  
(Two straight lines perpendicular to a plane are parallel to each other.)

Two straight lines perpendicular to a plane are parallel to each other.

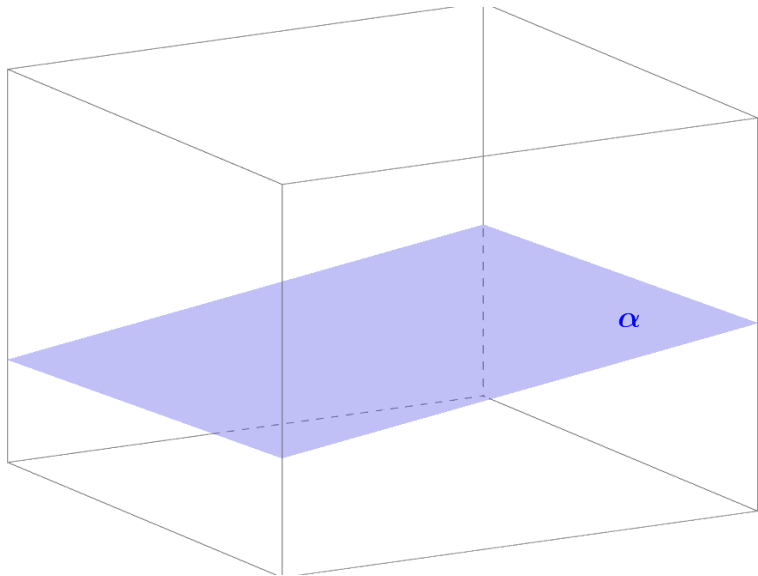
▶ Start

▶ End

Two straight lines perpendicular to a plane are parallel to each other.

▶ Start

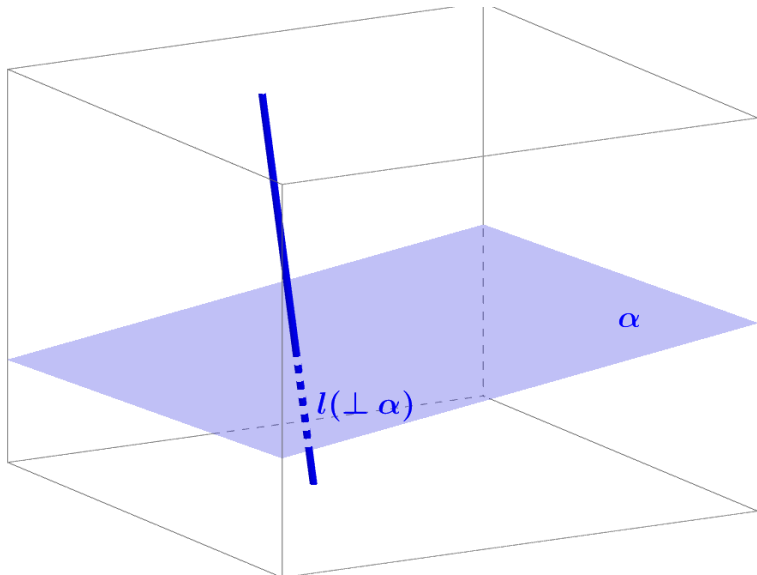
▶ End



Two straight lines perpendicular to a plane are parallel to each other.

▶ Start

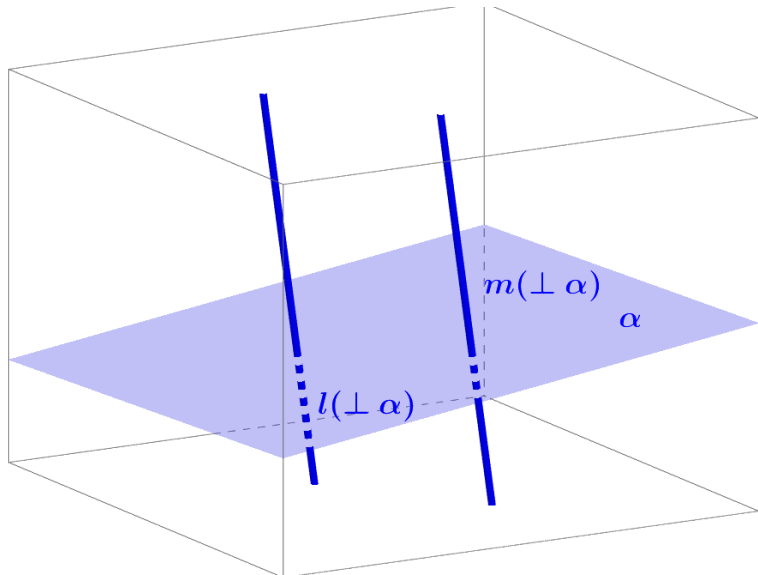
▶ End



Two straight lines perpendicular to a plane are parallel to each other.

▶ Start

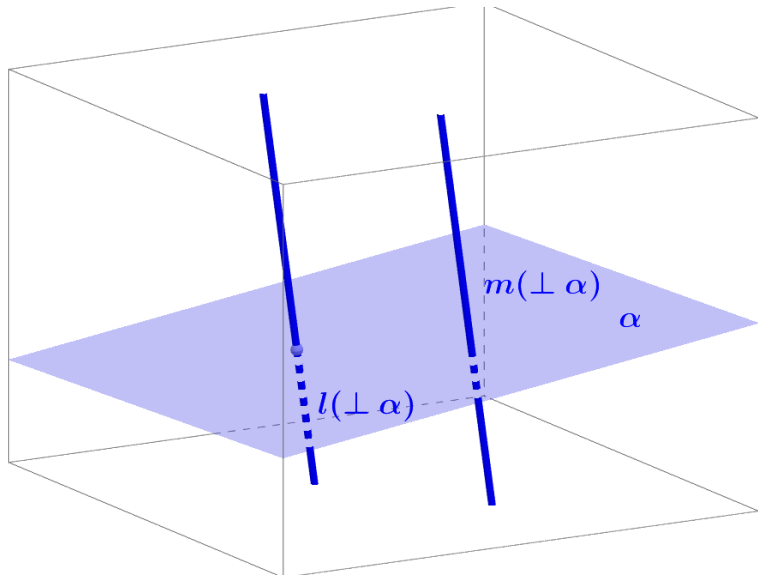
▶ End



Two straight lines perpendicular to a plane are parallel to each other.

▶ Start

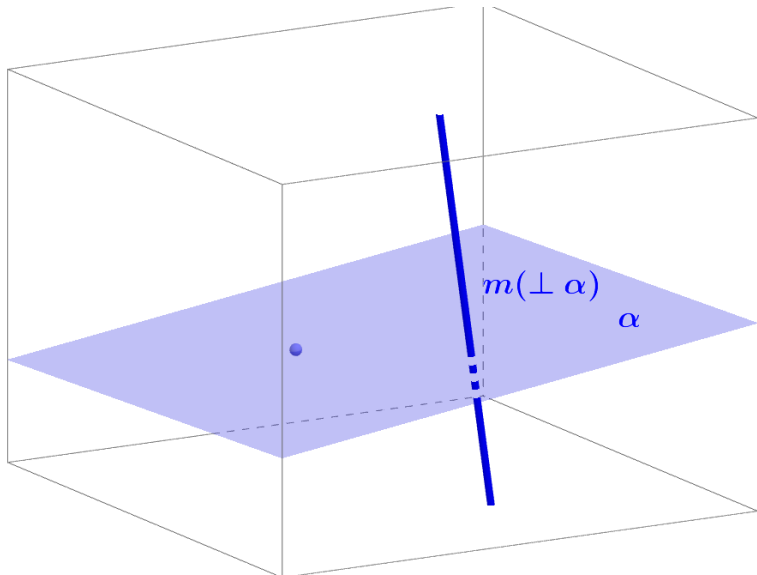
▶ End



Two straight lines perpendicular to a plane are parallel to each other.

▶ Start

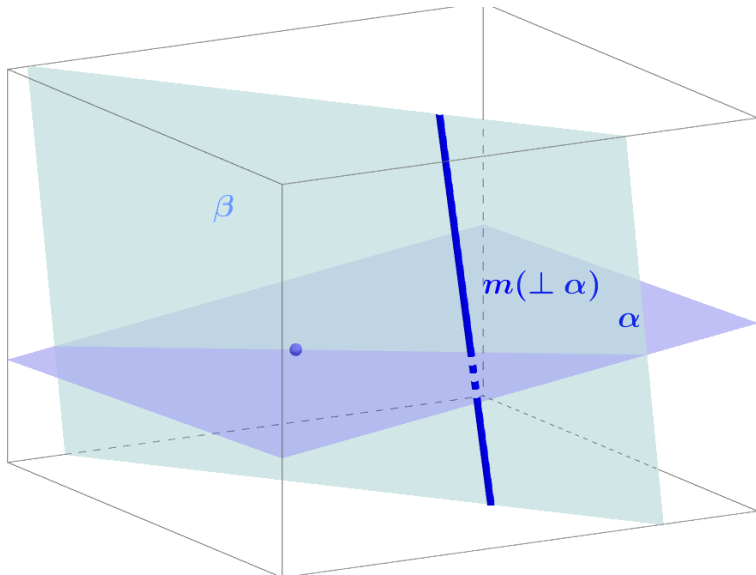
▶ End



Two straight lines perpendicular to a plane are parallel to each other.

▶ Start

▶ End

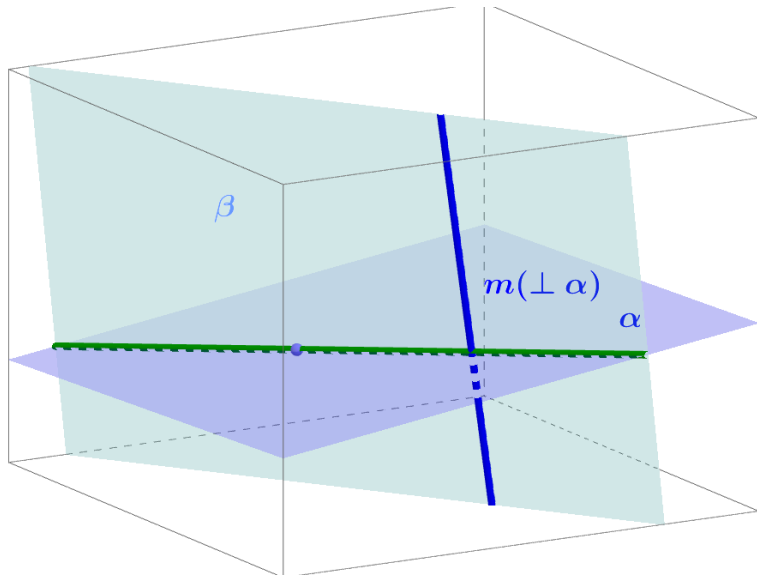




Two straight lines perpendicular to a plane are parallel to each other.

▶ Start

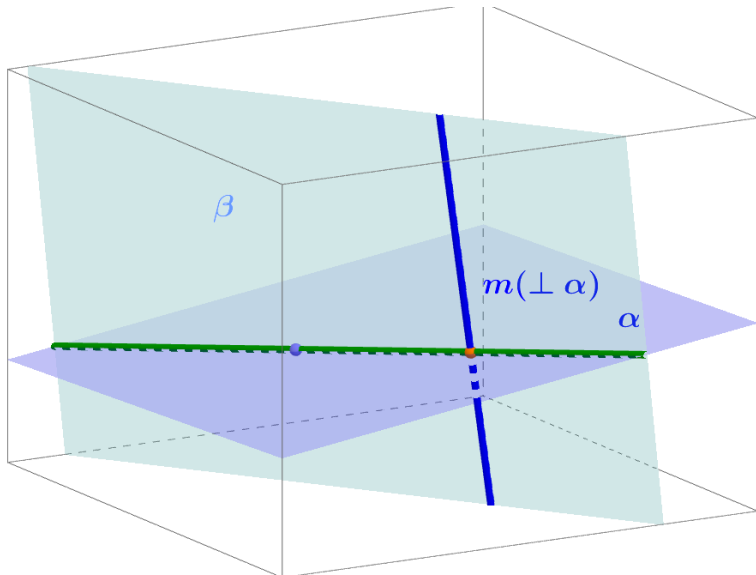
▶ End



Two straight lines perpendicular to a plane are parallel to each other.

▶ Start

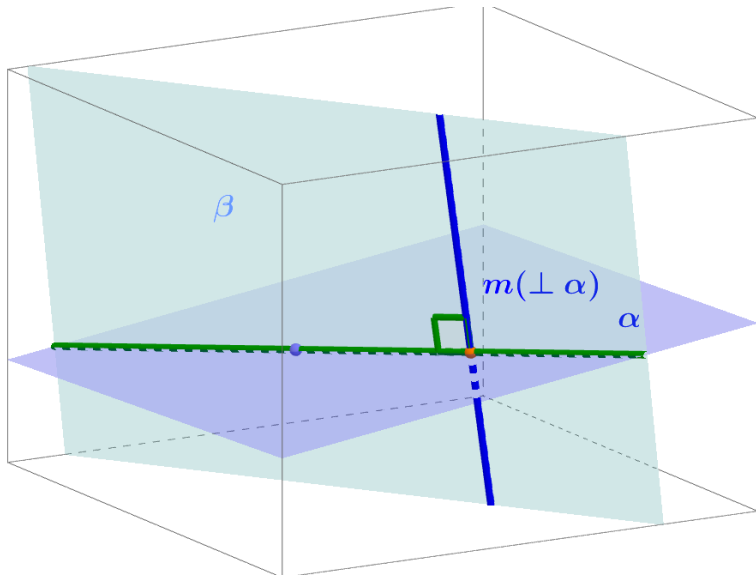
▶ End



Two straight lines perpendicular to a plane are parallel to each other.

▶ Start

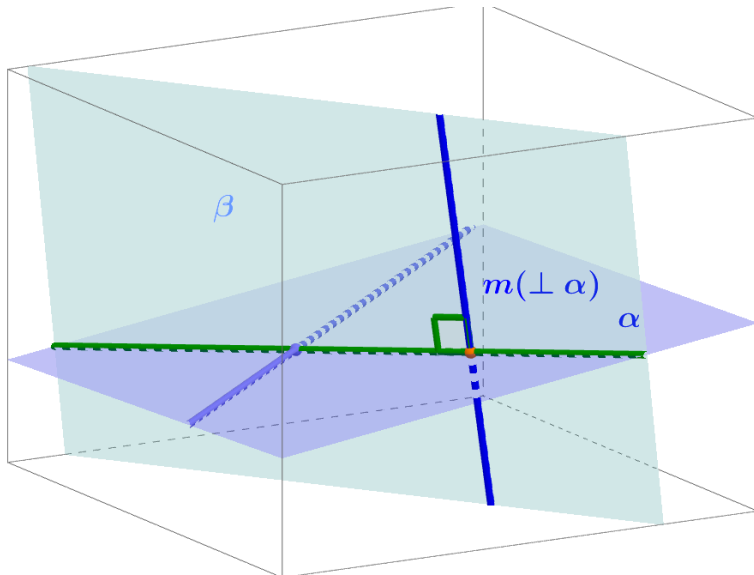
▶ End



Two straight lines perpendicular to a plane are parallel to each other.

▶ Start

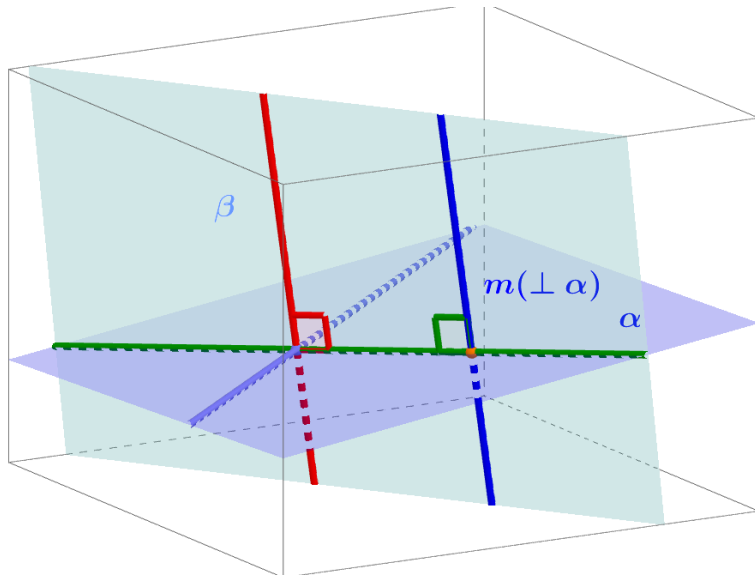
▶ End



Two straight lines perpendicular to a plane are parallel to each other.

▶ Start

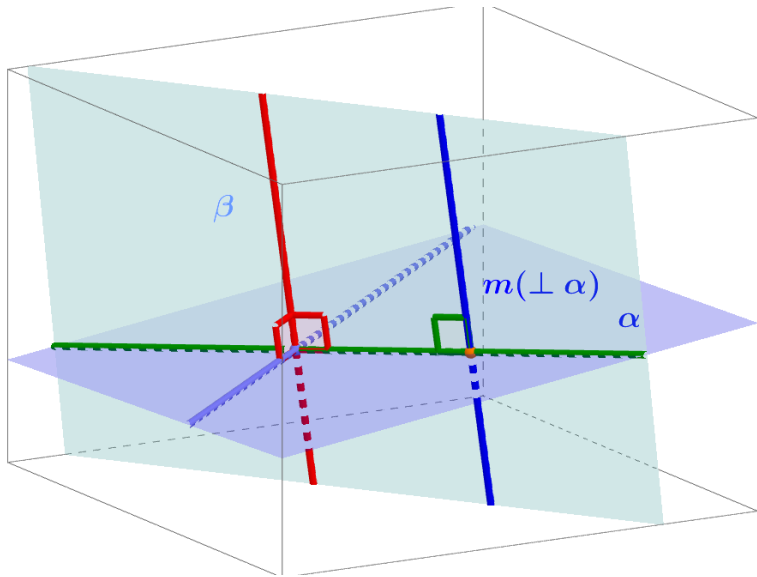
▶ End



Two straight lines perpendicular to a plane are parallel to each other.

▶ Start

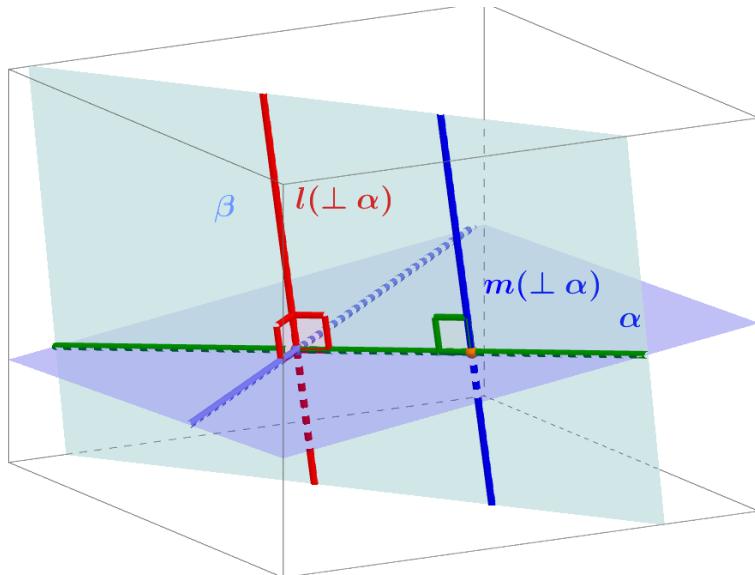
▶ End



Two straight lines perpendicular to a plane are parallel to each other.

▶ Start

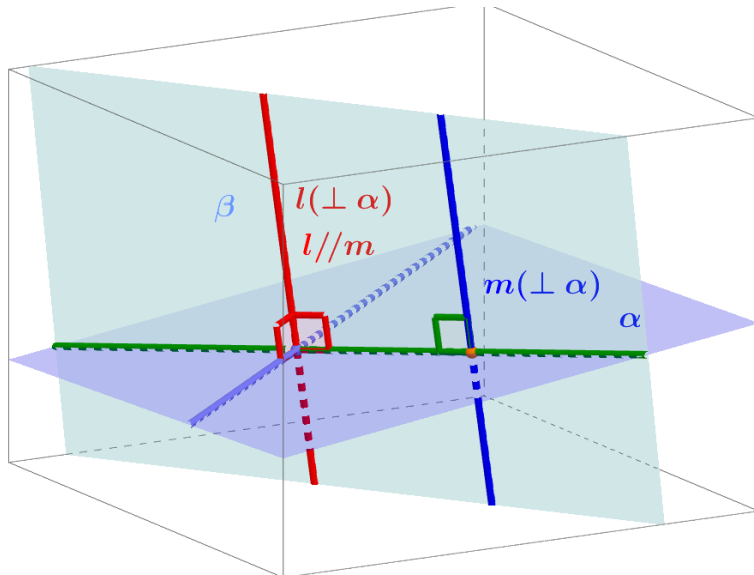
▶ End



Two straight lines perpendicular to a plane are parallel to each other.

▶ Start

▶ End





Two straight lines perpendicular to a plane are parallel to each other.

Github:

<https://min7014.github.io/math20230319001.html>

Click or paste URL into the URL search bar,  
and you can see a picture moving.