

When a plane intersects two parallel planes, the two lines of intersection are parallel.

한 평면이 평행한 두 평면과 만날 때 생기는 두 교선은 서로 평행하다.

(When a plane intersects two parallel planes, the two lines of intersection are parallel.)

When a plane intersects two parallel planes, the two lines of intersection are parallel.

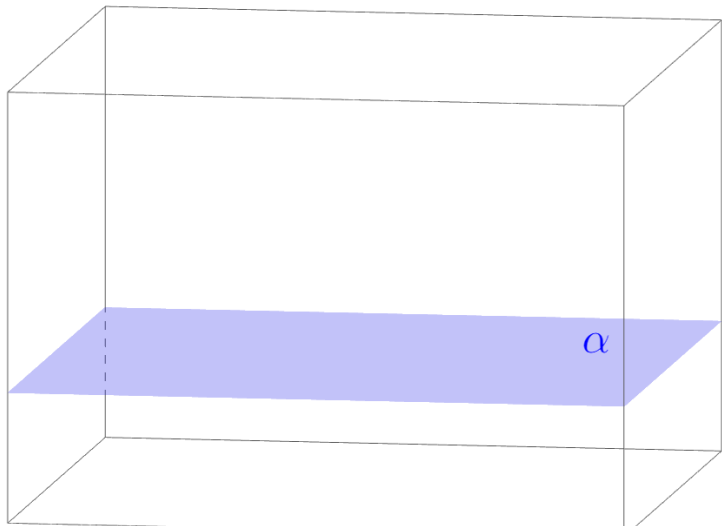
▶ Start

▶ End

When a plane intersects two parallel planes, the two lines of intersection are parallel.

▶ Start

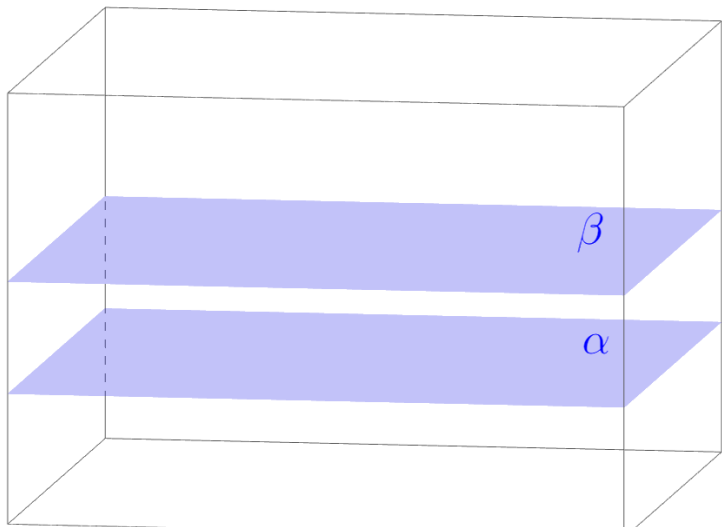
▶ End



When a plane intersects two parallel planes, the two lines of intersection are parallel.

▶ Start

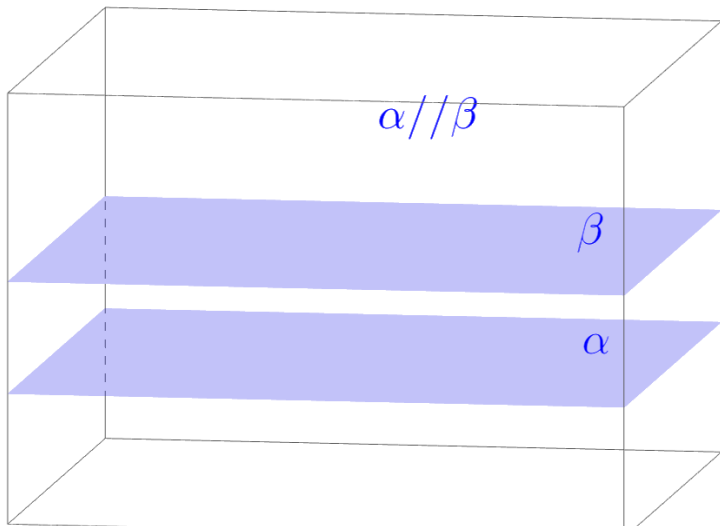
▶ End



When a plane intersects two parallel planes, the two lines of intersection are parallel.

▶ Start

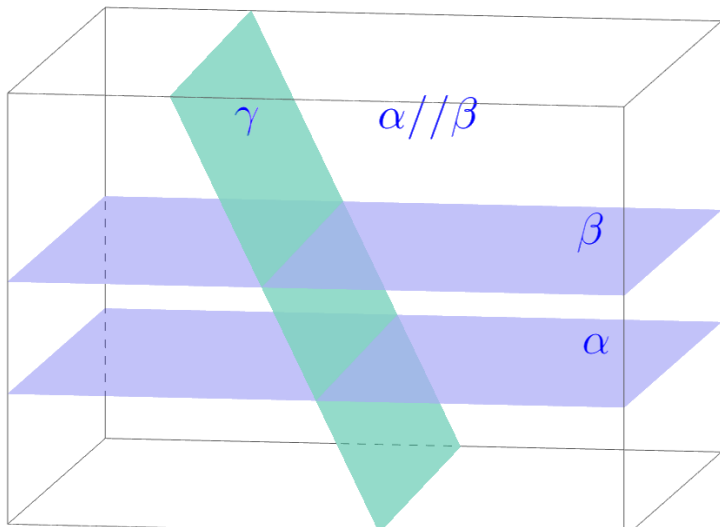
▶ End



When a plane intersects two parallel planes, the two lines of intersection are parallel.

▶ Start

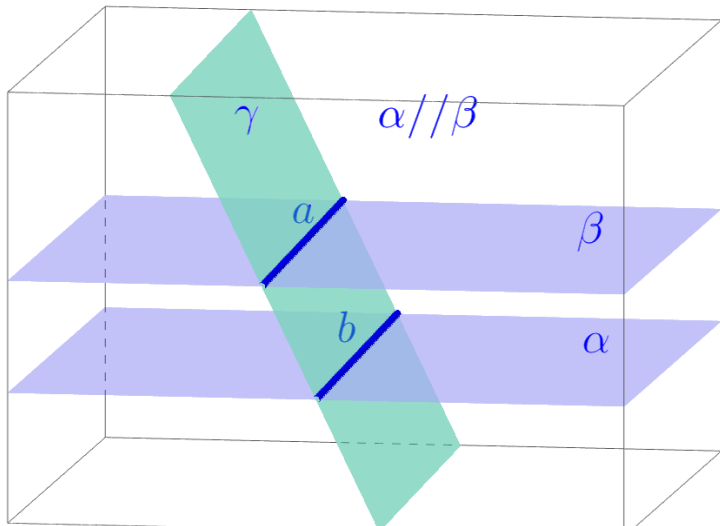
▶ End



When a plane intersects two parallel planes, the two lines of intersection are parallel.

▶ Start

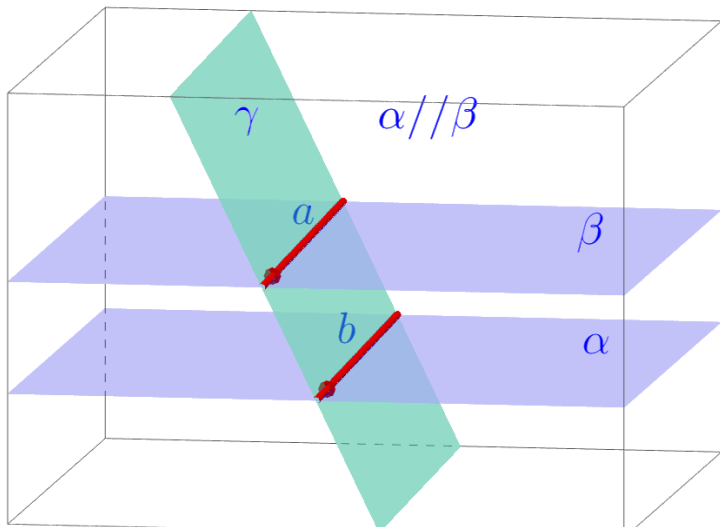
▶ End



When a plane intersects two parallel planes, the two lines of intersection are parallel.

▶ Start

▶ End



When a plane intersects two parallel planes, the two lines of intersection are parallel.

Github:

<https://min7014.github.io/math20221206001.html>

Click or paste URL into the URL search bar,
and you can see a picture moving.