

When a directrix is $y = -p$ and a focus is $(0, p)$, find the equation for the tangent line to the parabola at a given point (x_1, y_1) .

준선이 $y = -p$ 이고 초점이 $(0, p)$ 일 때, 포물선 상의 점 (x_1, y_1) 에서의 접선의 방정식을 구하여라.
(When a directrix is $y = -p$ and a focus is $(0, p)$, find the equation for the tangent line to the parabola at a given point (x_1, y_1) .)

When a directrix is $y = -p$ and a focus is $(0, p)$, find the equation for the tangent line to the parabola at a given point (x_1, y_1) .

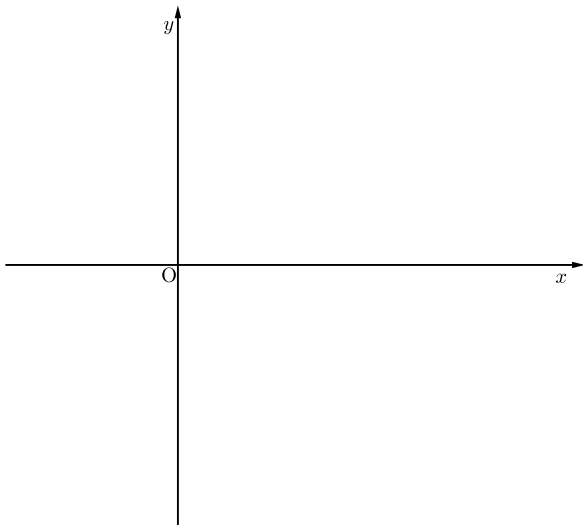
▶ Start

▶ End

When a directrix is $y = -p$ and a focus is $(0, p)$, find the equation for the tangent line to the parabola at a given point (x_1, y_1) .

▶ Start

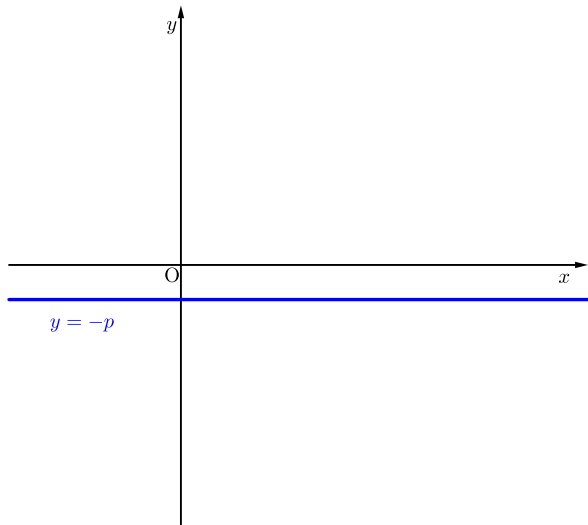
▶ End



When a directrix is $y = -p$ and a focus is $(0, p)$, find the equation for the tangent line to the parabola at a given point (x_1, y_1) .

▶ Start

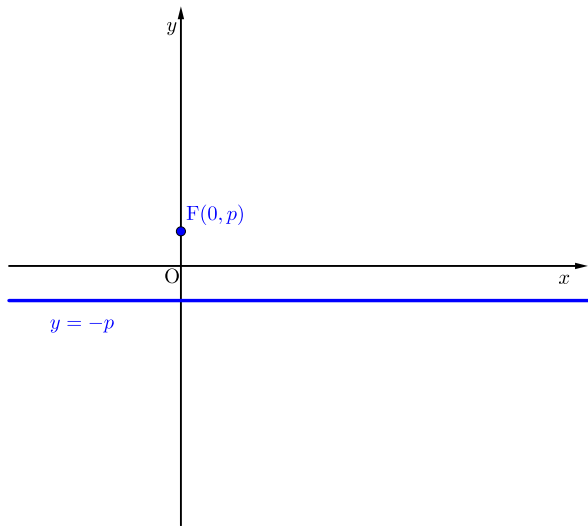
▶ End



When a directrix is $y = -p$ and a focus is $(0, p)$, find the equation for the tangent line to the parabola at a given point (x_1, y_1) .

► Start

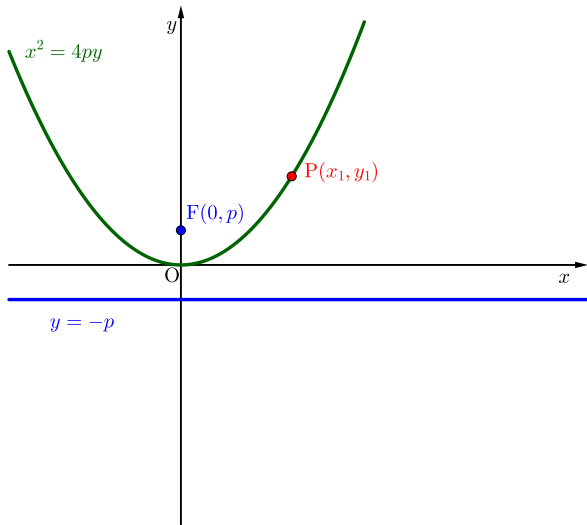
► End



When a directrix is $y = -p$ and a focus is $(0, p)$, find the equation for the tangent line to the parabola at a given point (x_1, y_1) .

▶ Start

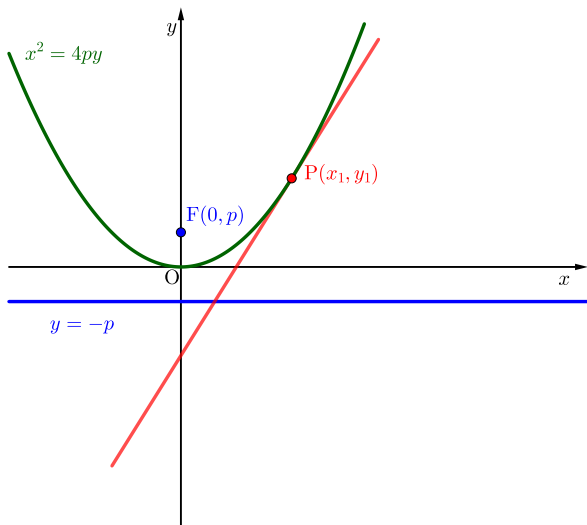
▶ End



When a directrix is $y = -p$ and a focus is $(0, p)$, find the equation for the tangent line to the parabola at a given point (x_1, y_1) .

▶ Start

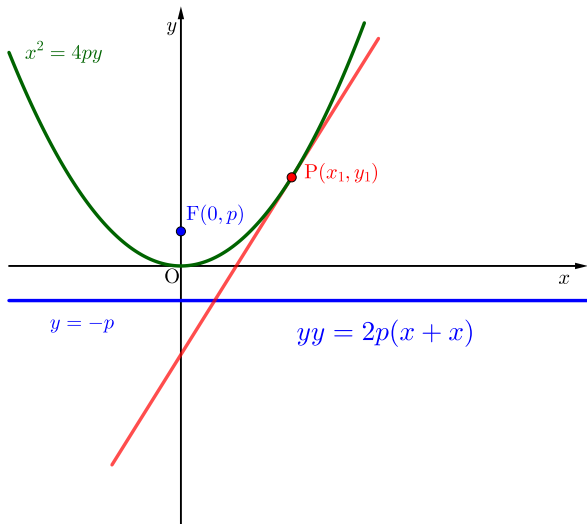
▶ End



When a directrix is $y = -p$ and a focus is $(0, p)$, find the equation for the tangent line to the parabola at a given point (x_1, y_1) .

▶ Start

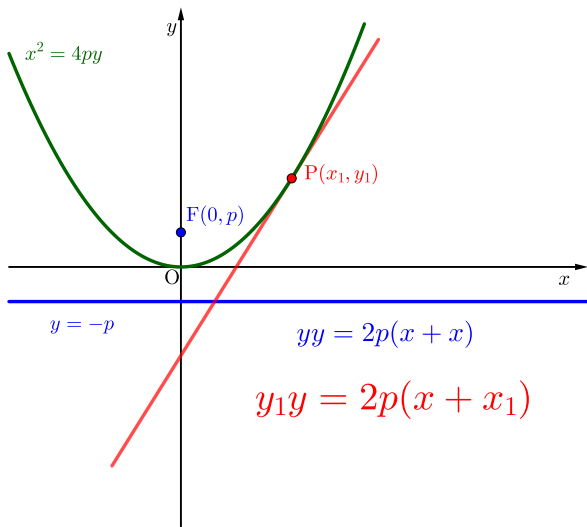
▶ End



When a directrix is $y = -p$ and a focus is $(0, p)$, find the equation for the tangent line to the parabola at a given point (x_1, y_1) .

▶ Start

▶ End



When a directrix is $y = -p$ and a focus is $(0, p)$, find the equation for the tangent line to the parabola at a given point (x_1, y_1) .

Github:

<https://min7014.github.io/math20220319001.html>

Click or paste URL into the URL search bar,
and you can see a picture moving.