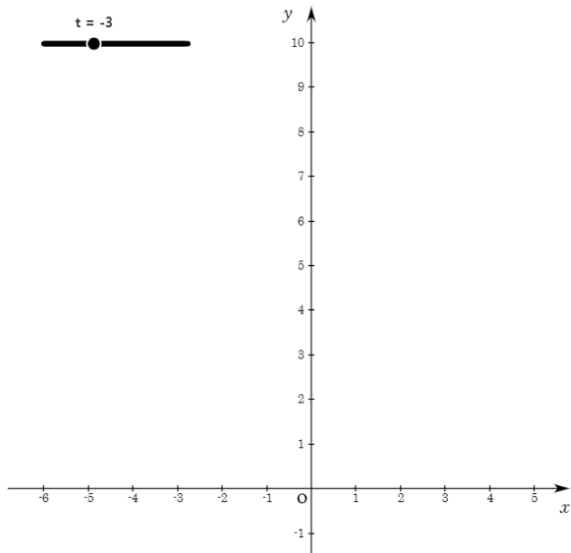
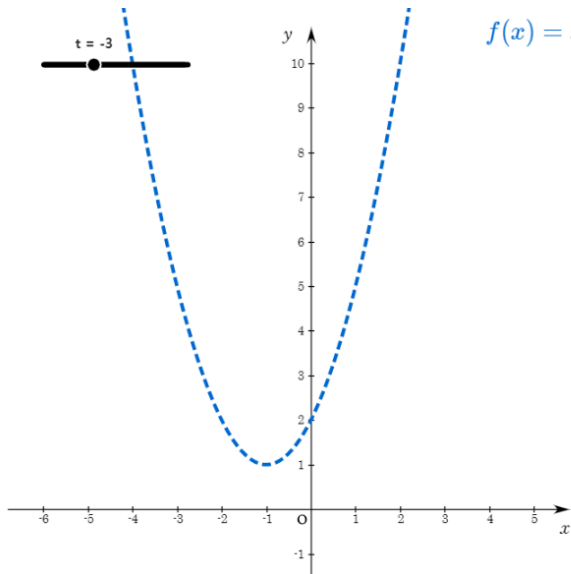
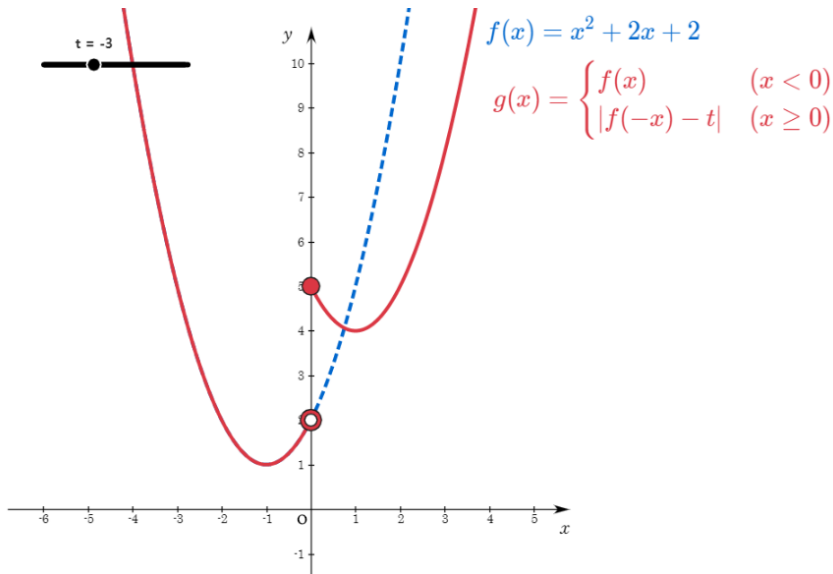


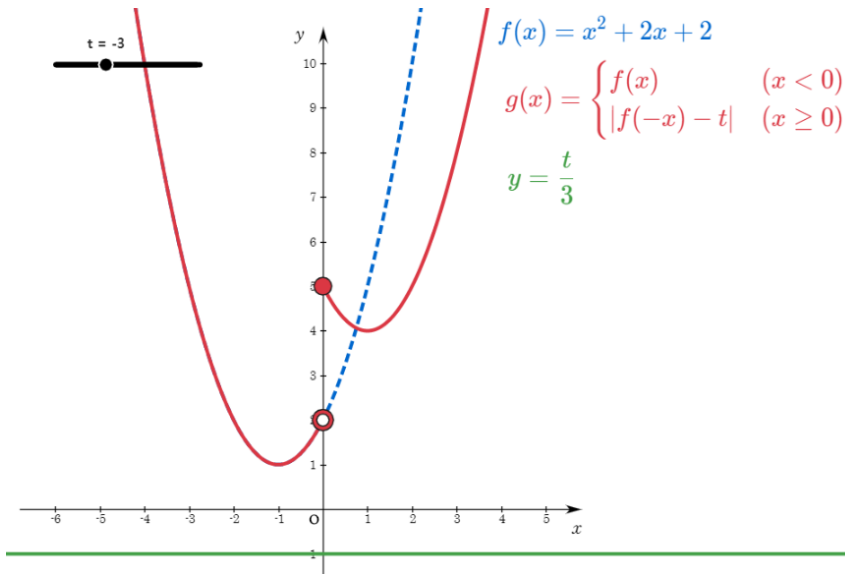
# 2020학년도 9월 고2 전국연합학력평가 수학영역 30번 문항

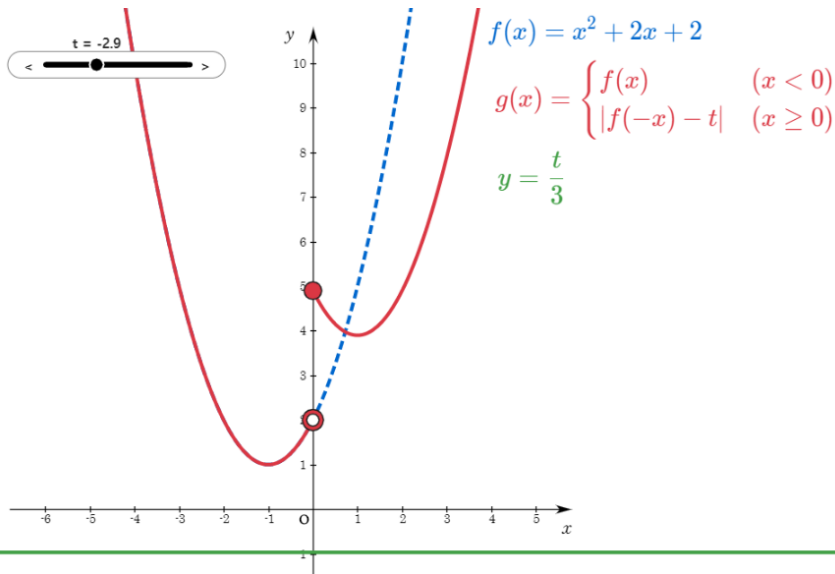


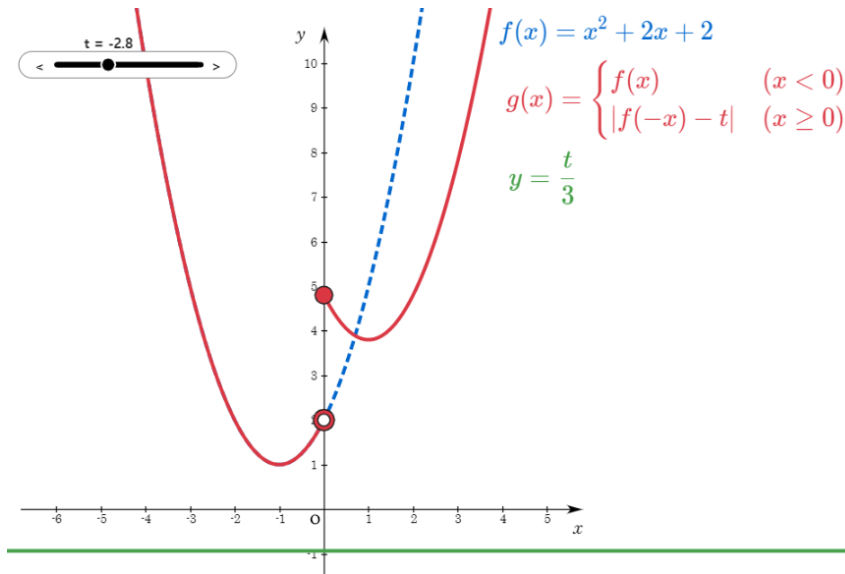


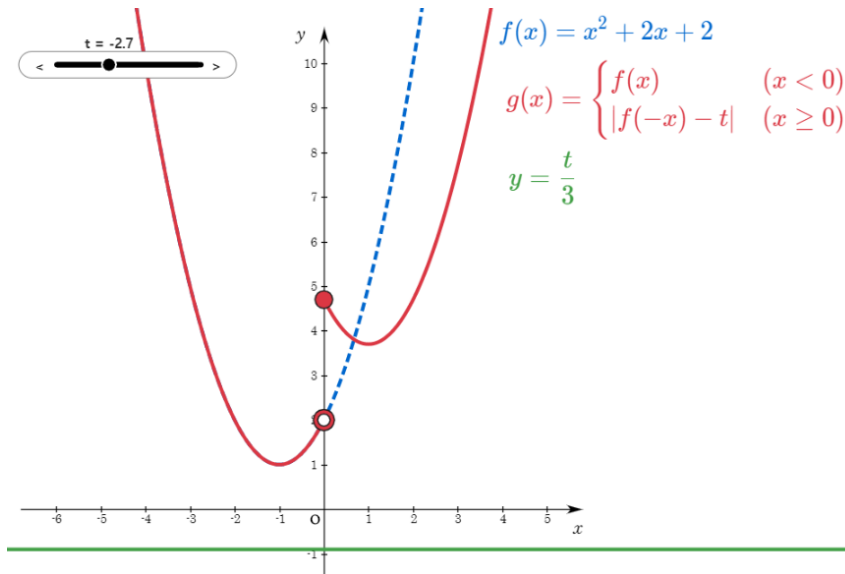
$$f(x) = x^2 + 2x + 2$$



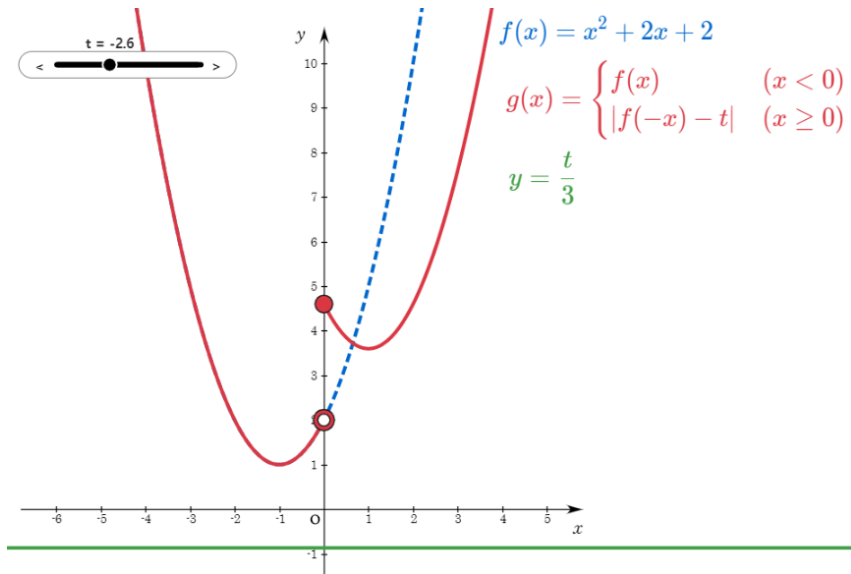


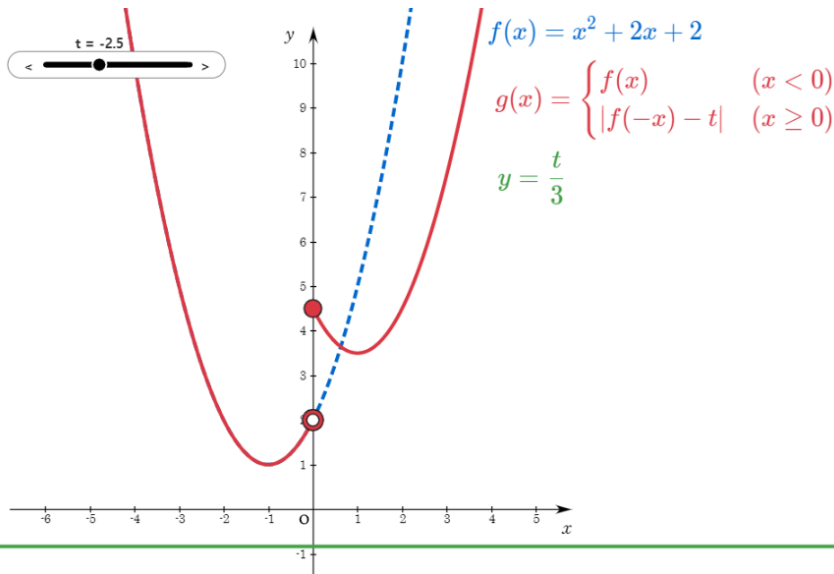


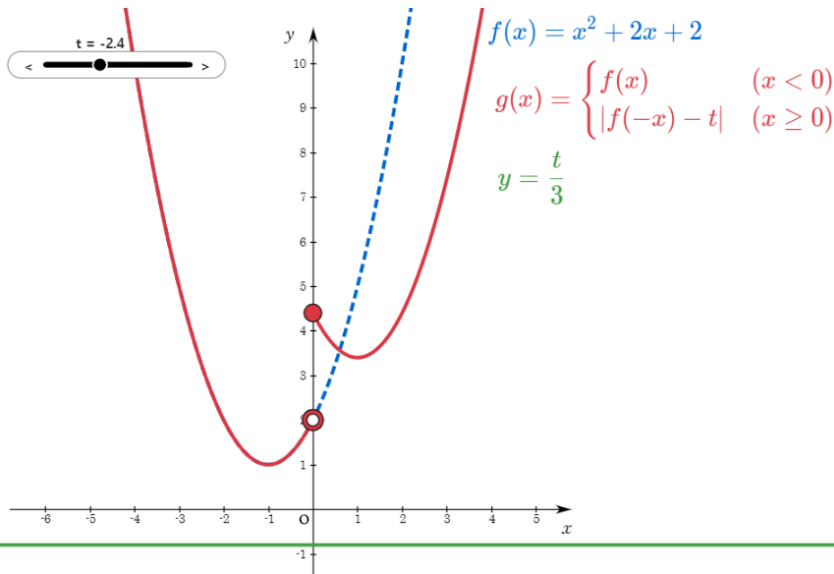


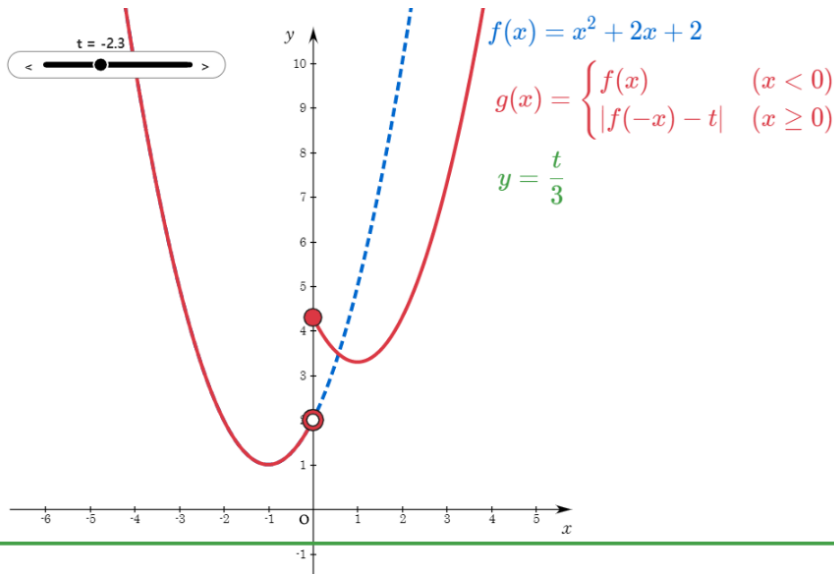


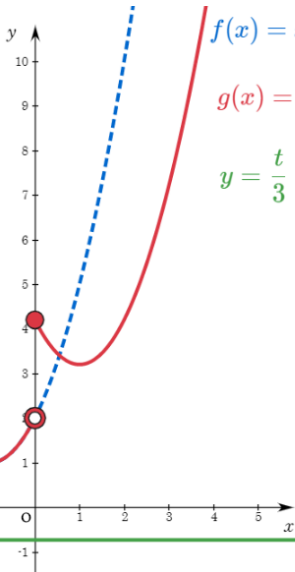
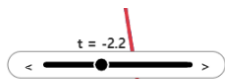








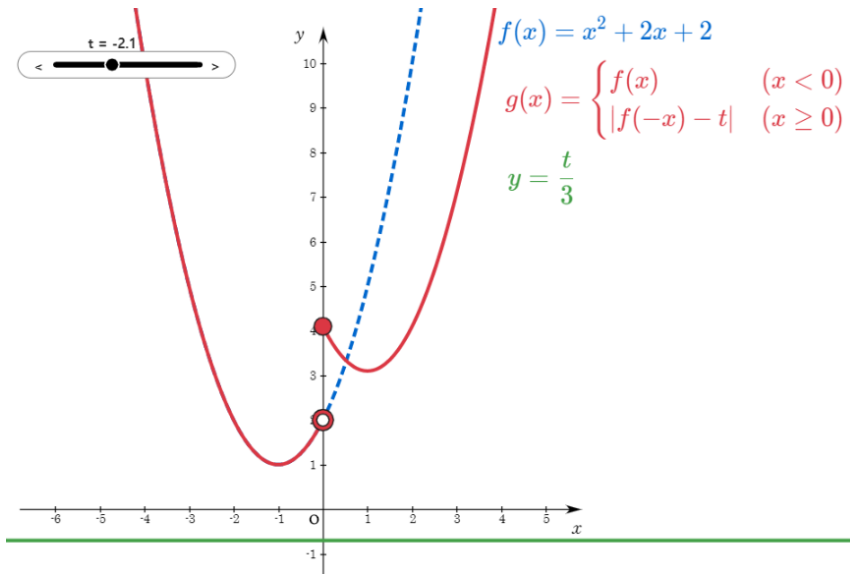


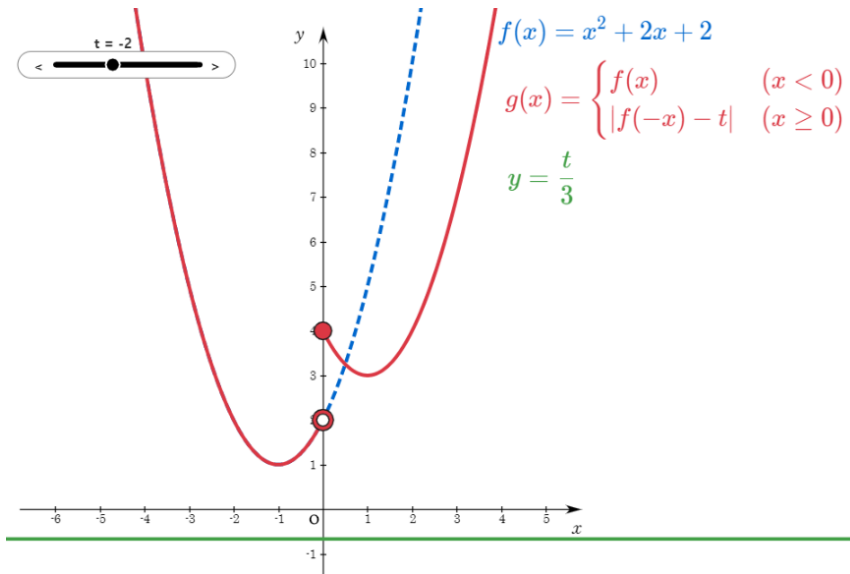


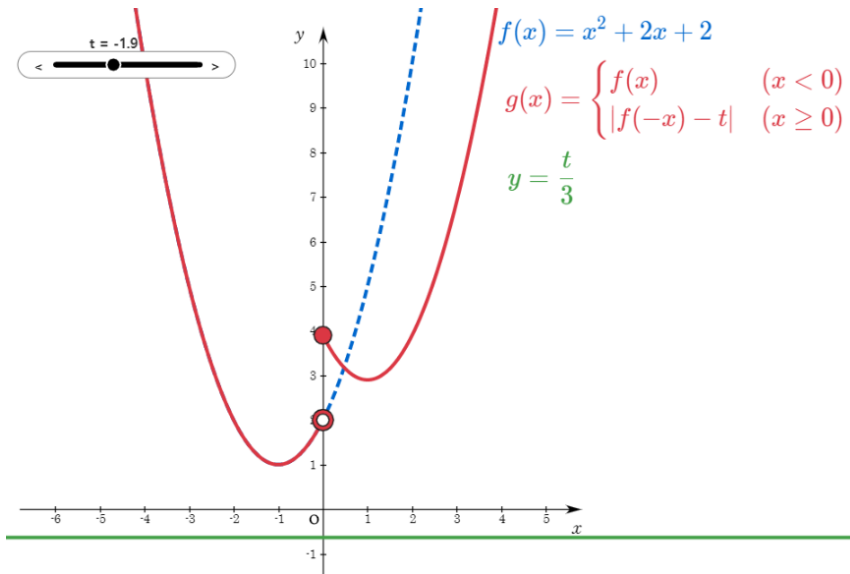
$$f(x) = x^2 + 2x + 2$$

$$g(x) = \begin{cases} f(x) & (x < 0) \\ |f(-x) - t| & (x \geq 0) \end{cases}$$

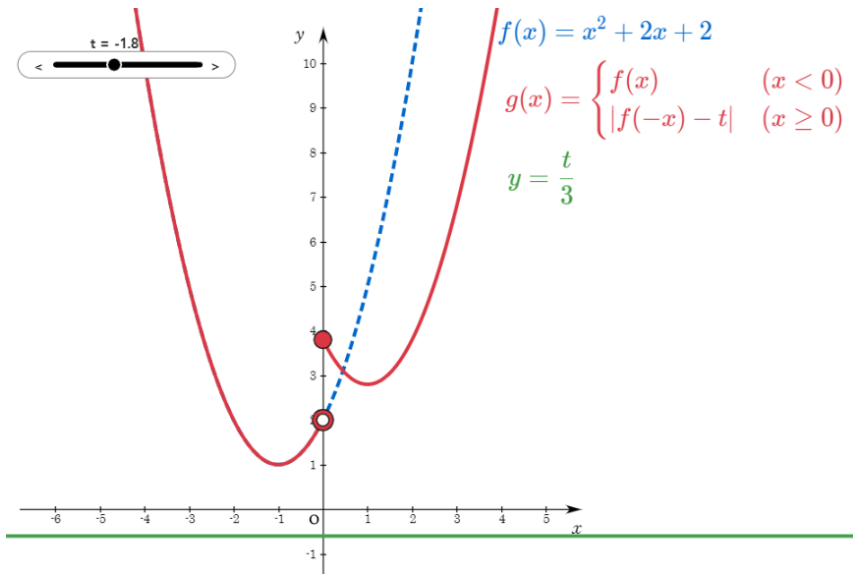
$$y = \frac{t}{3}$$

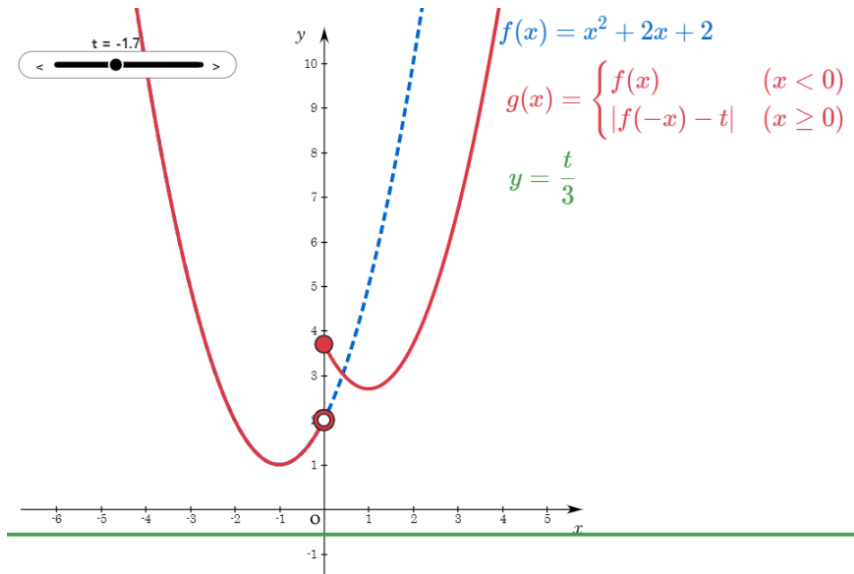


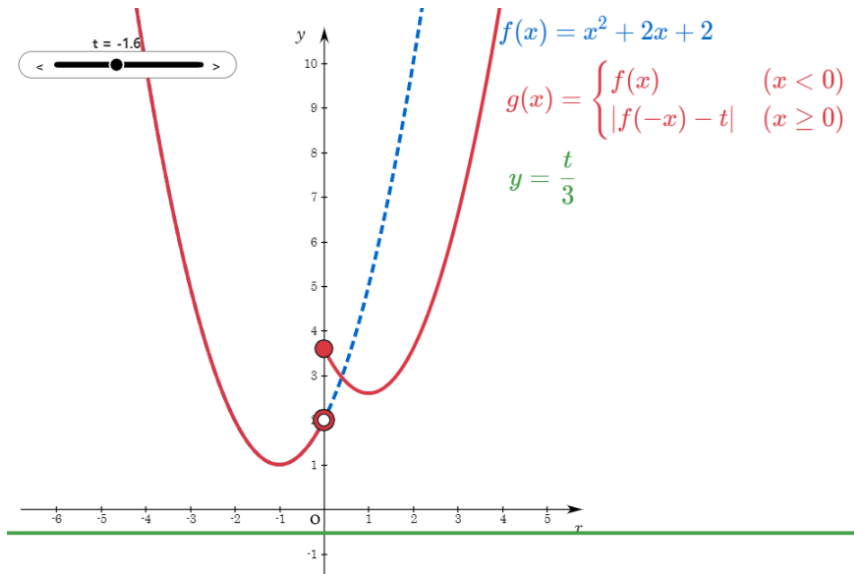


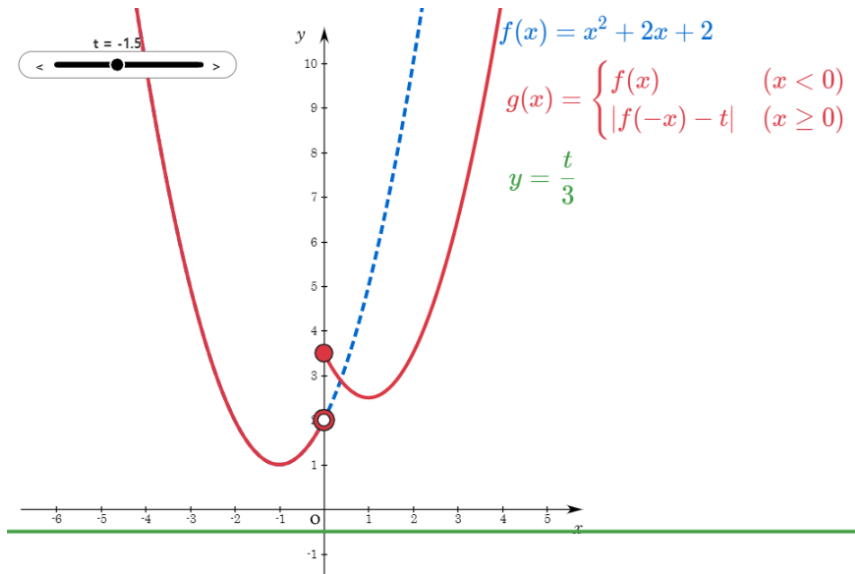


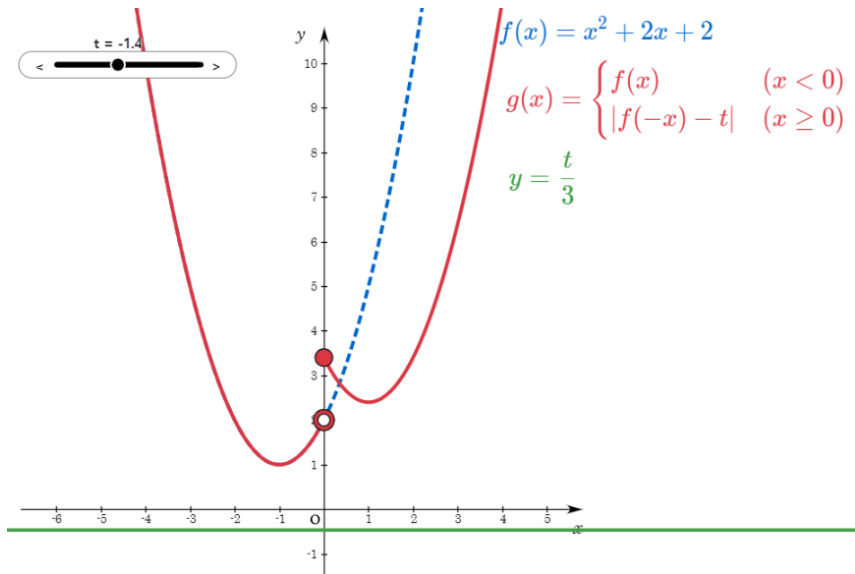


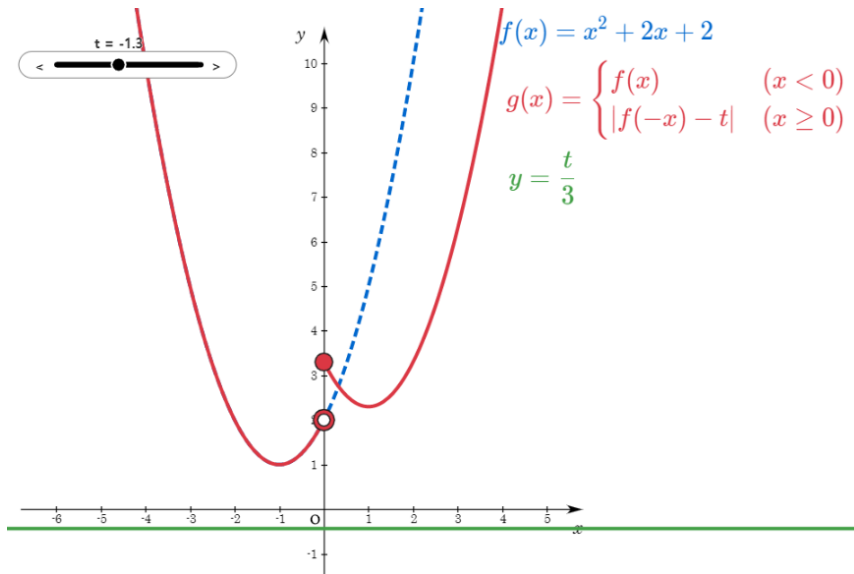


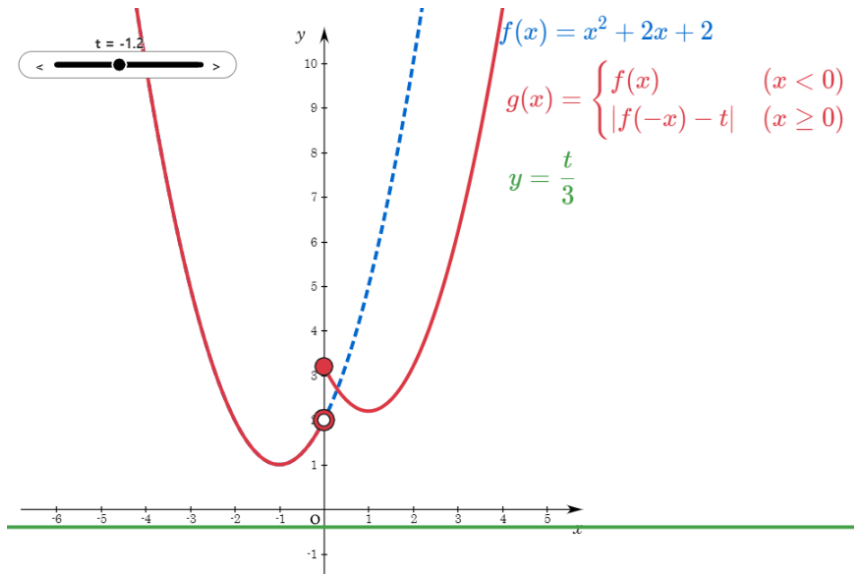


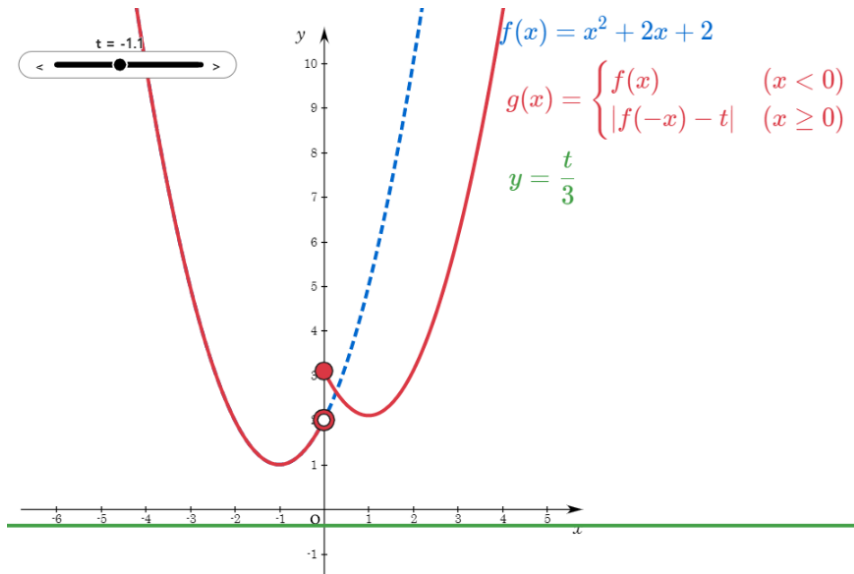




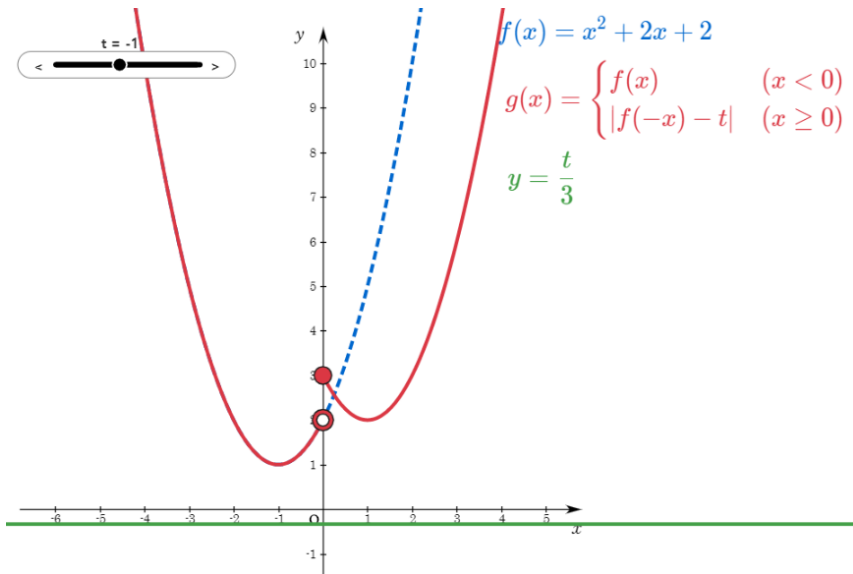


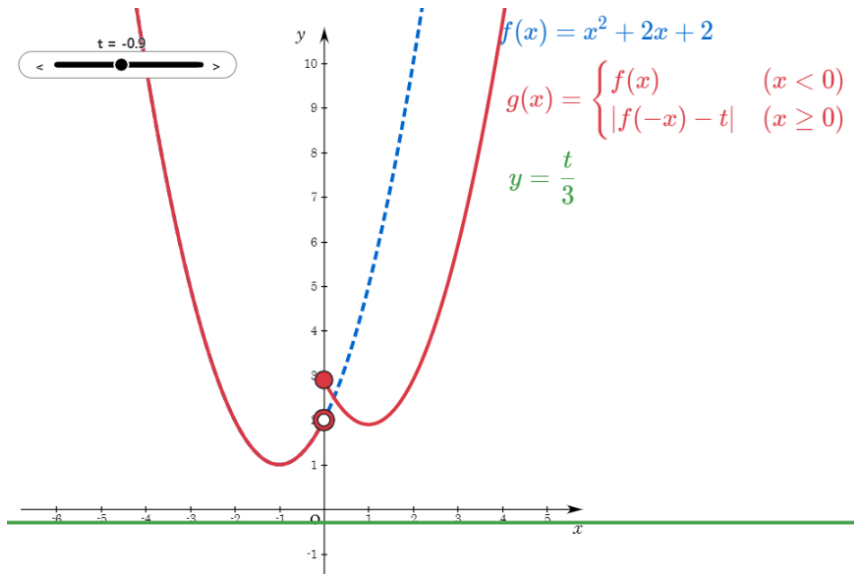


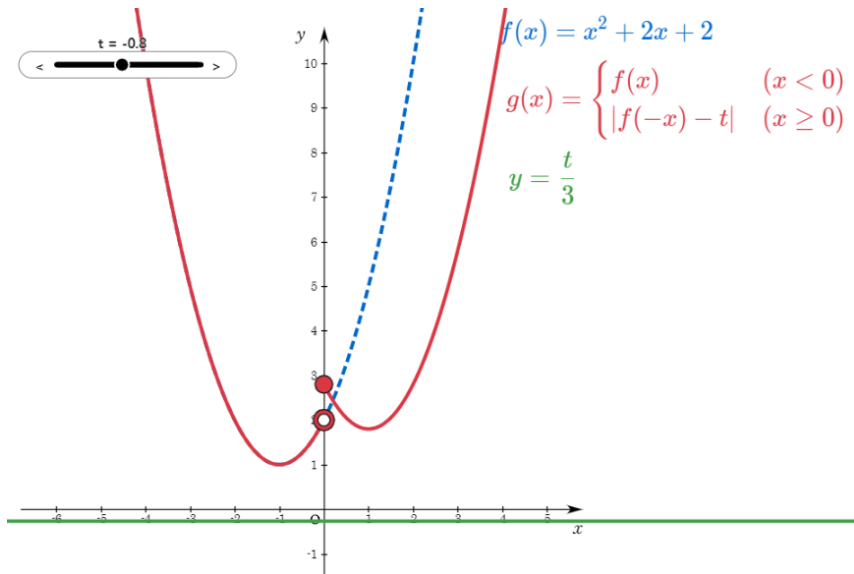


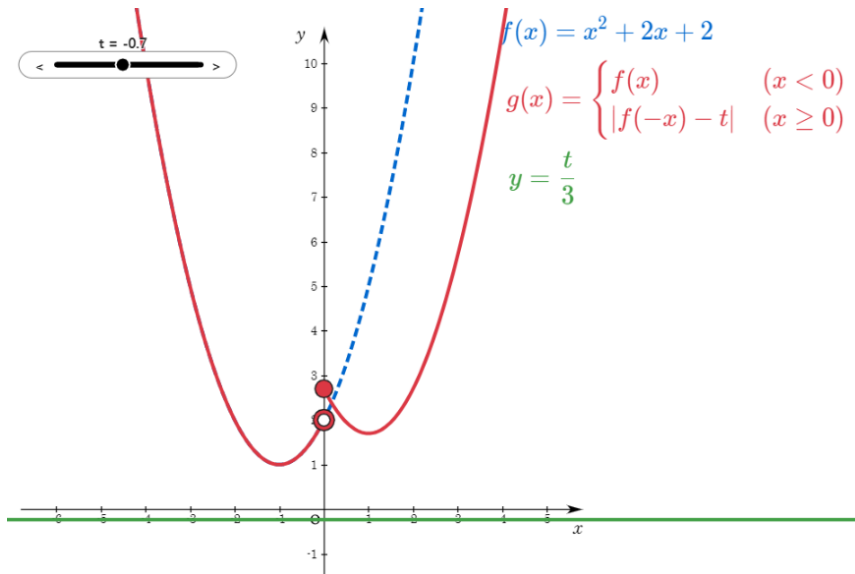


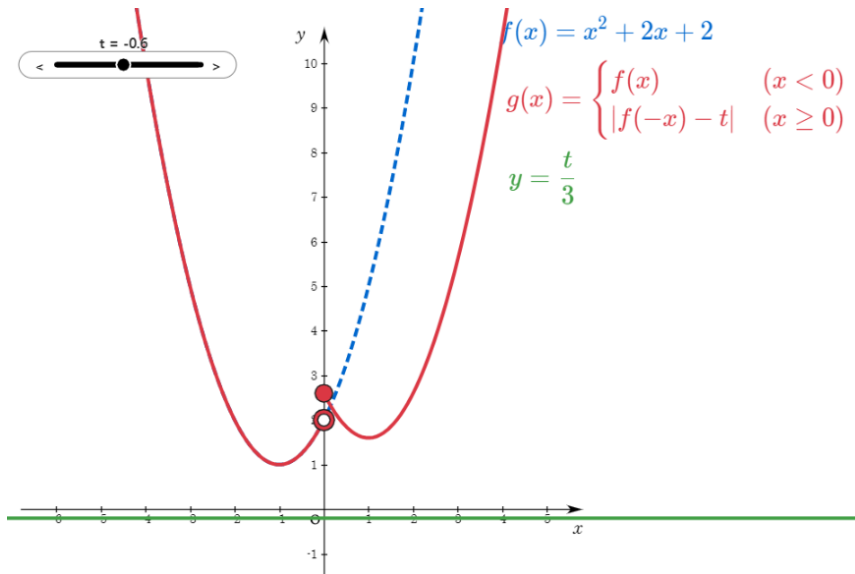


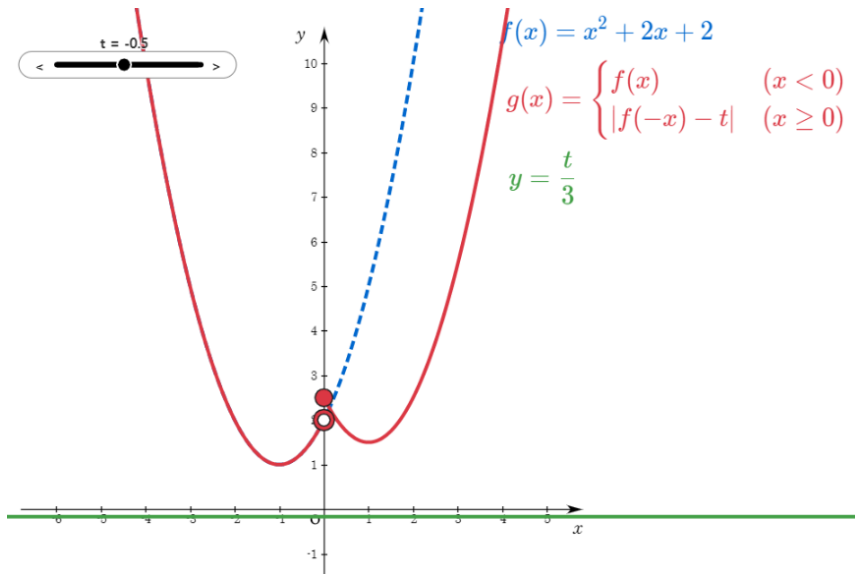


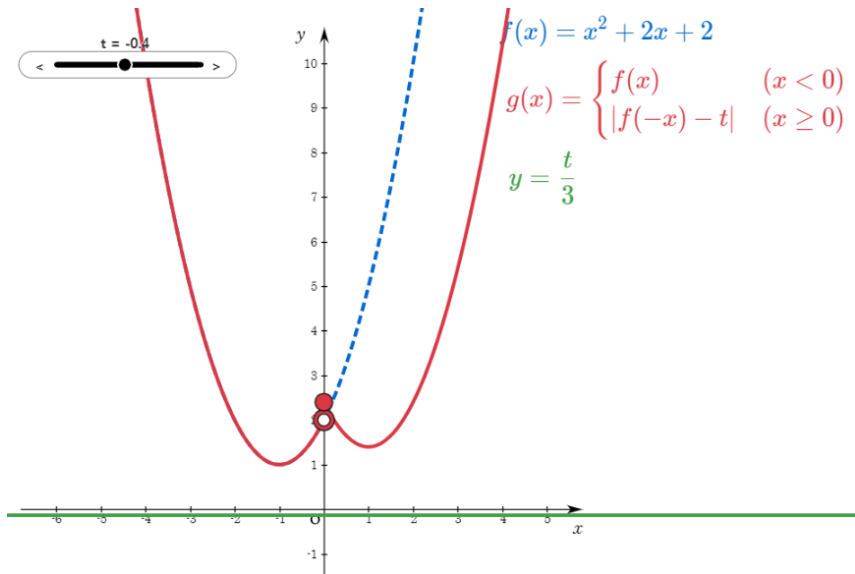


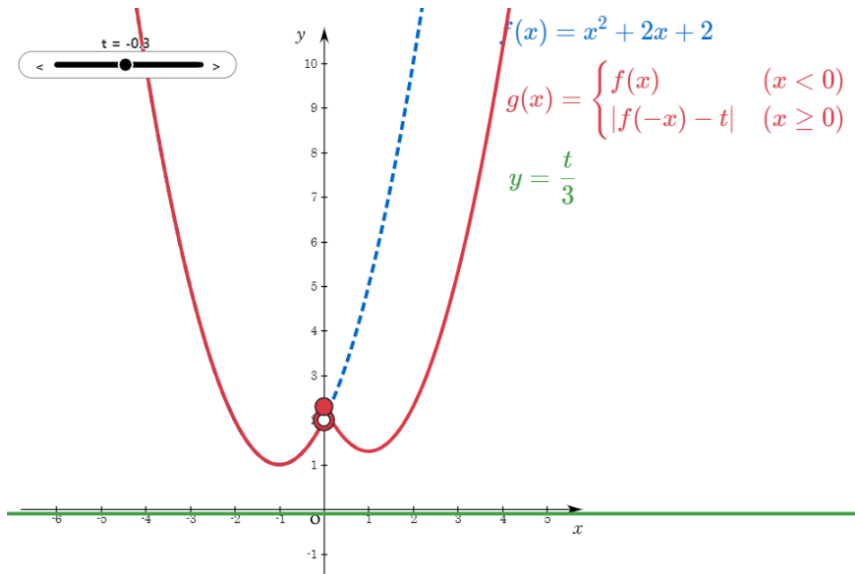




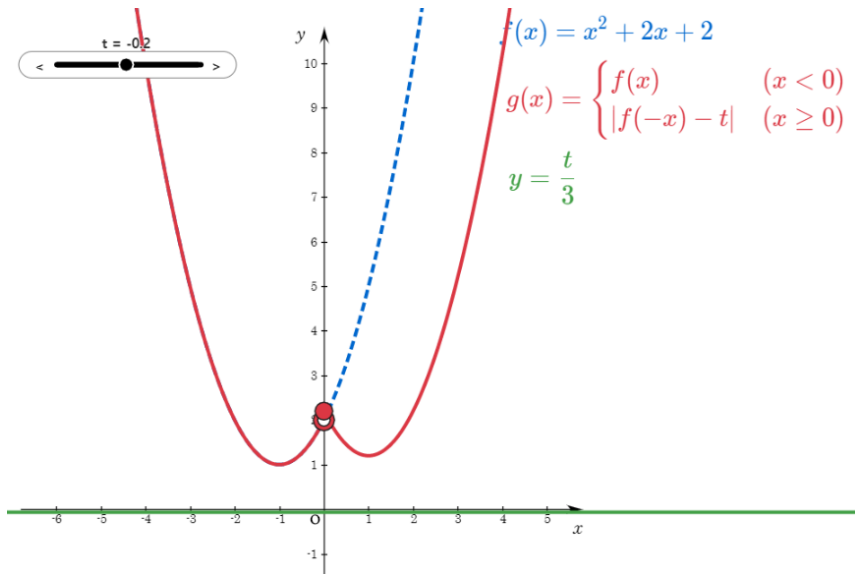


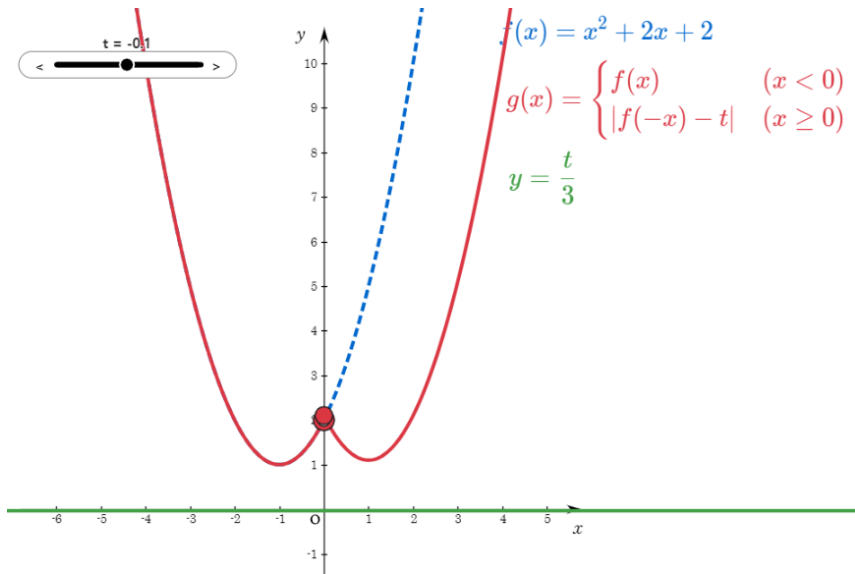


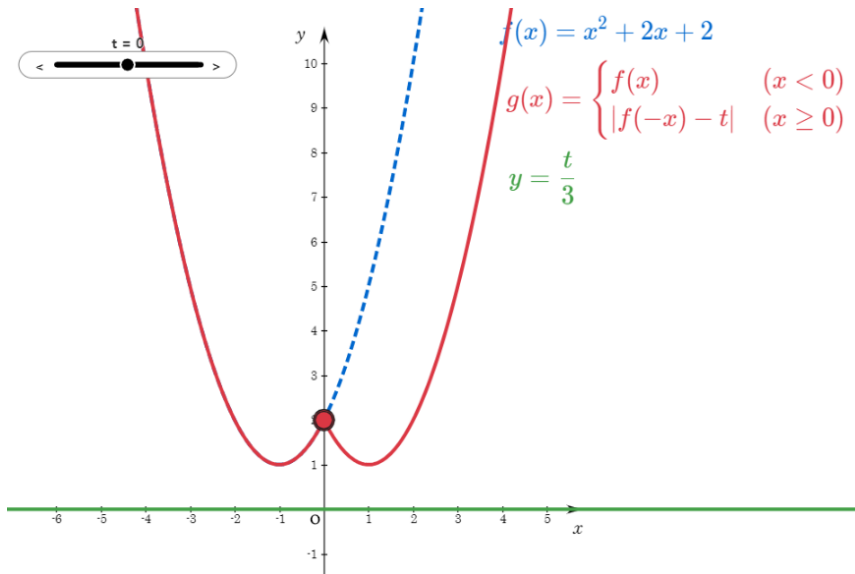


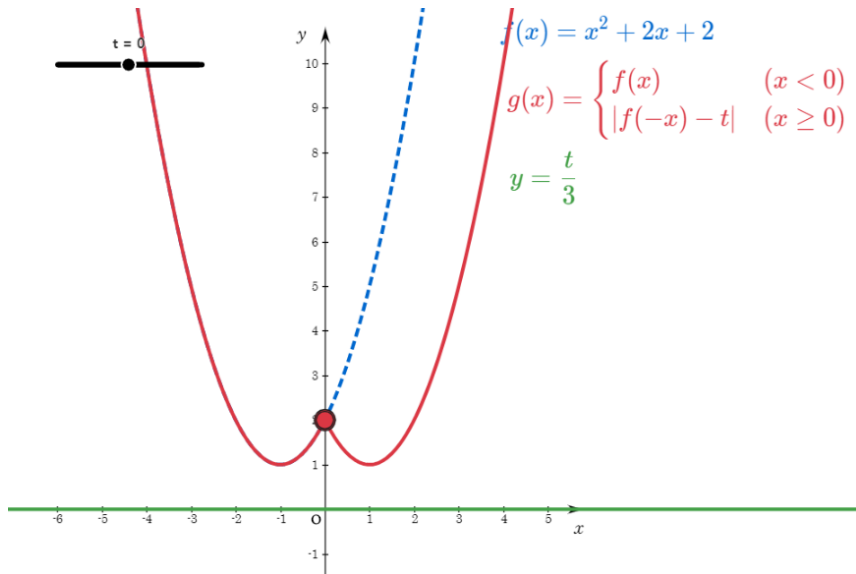


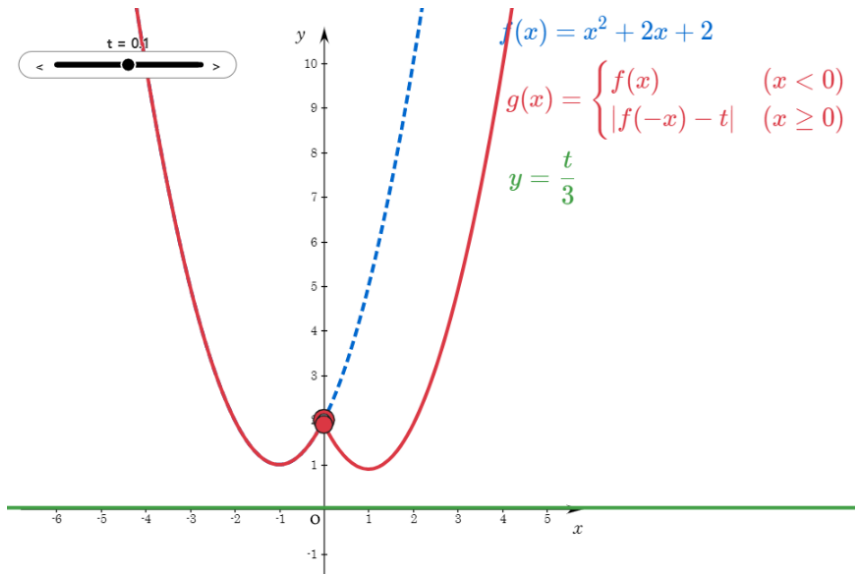


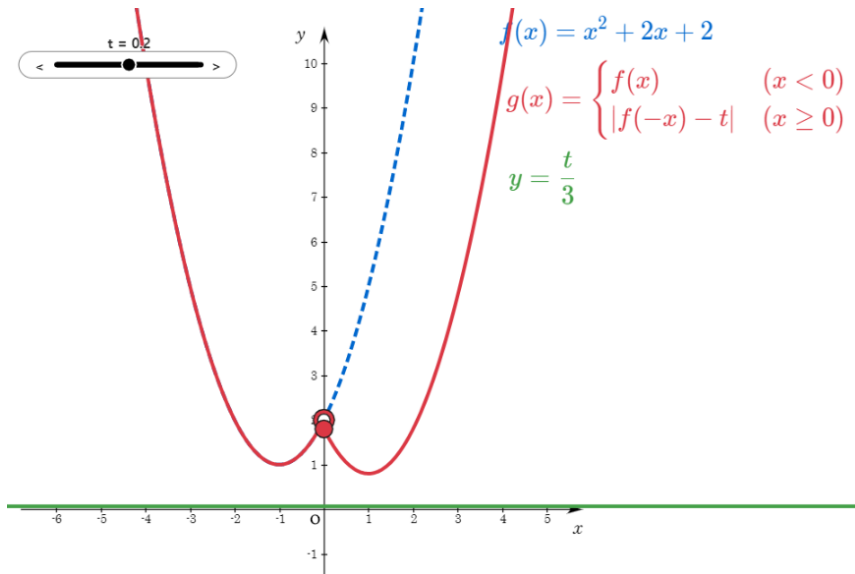


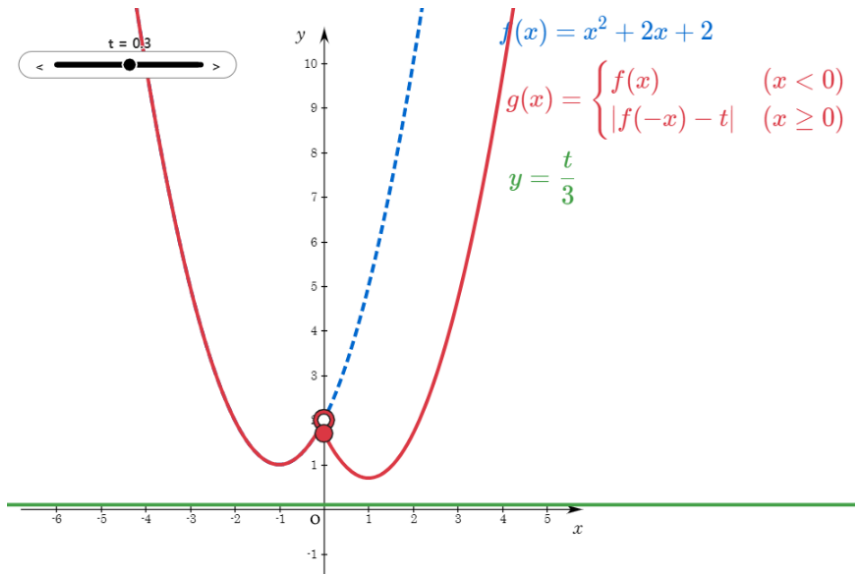


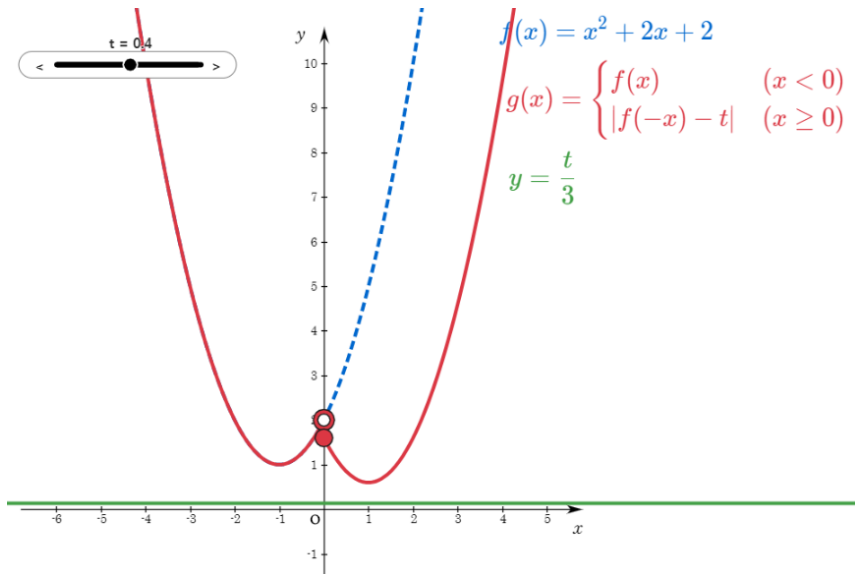




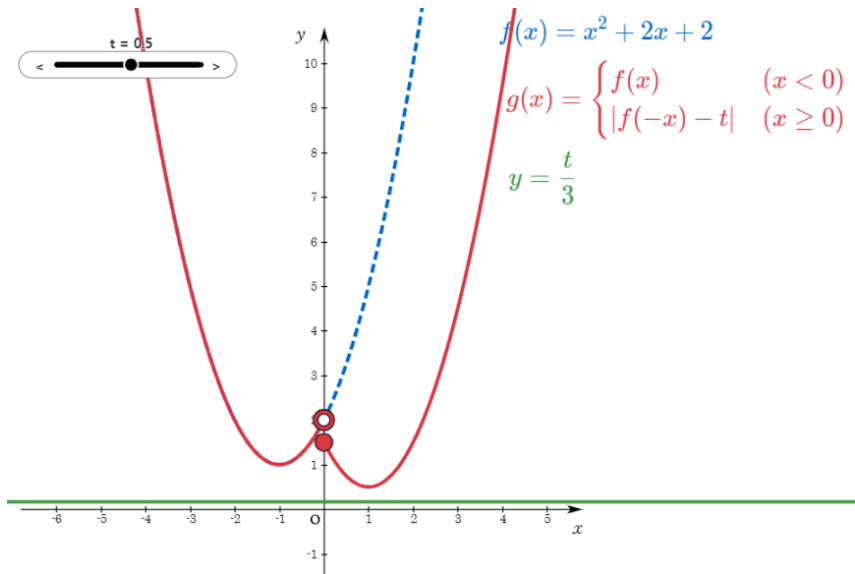


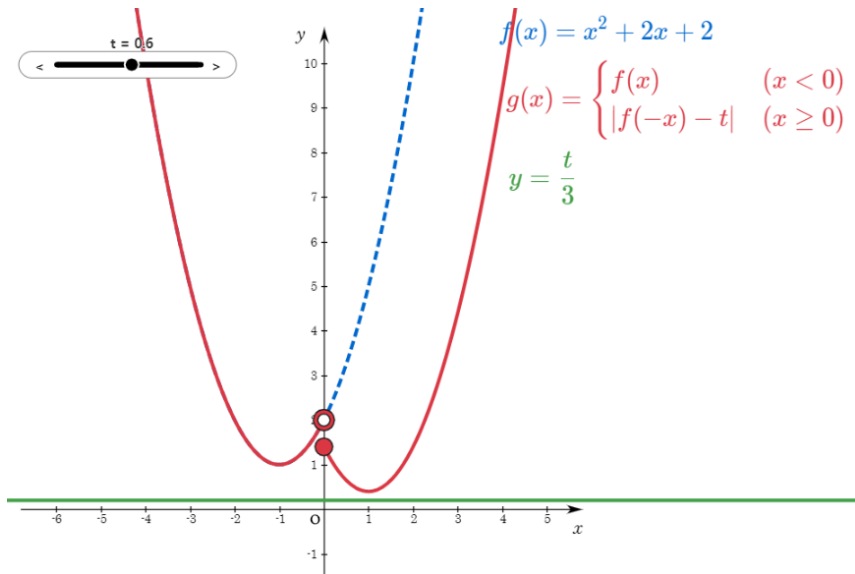


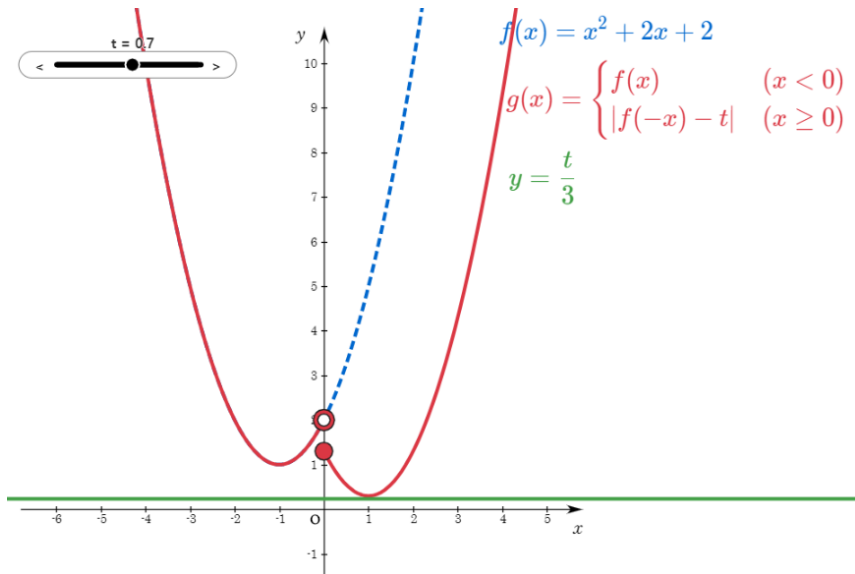


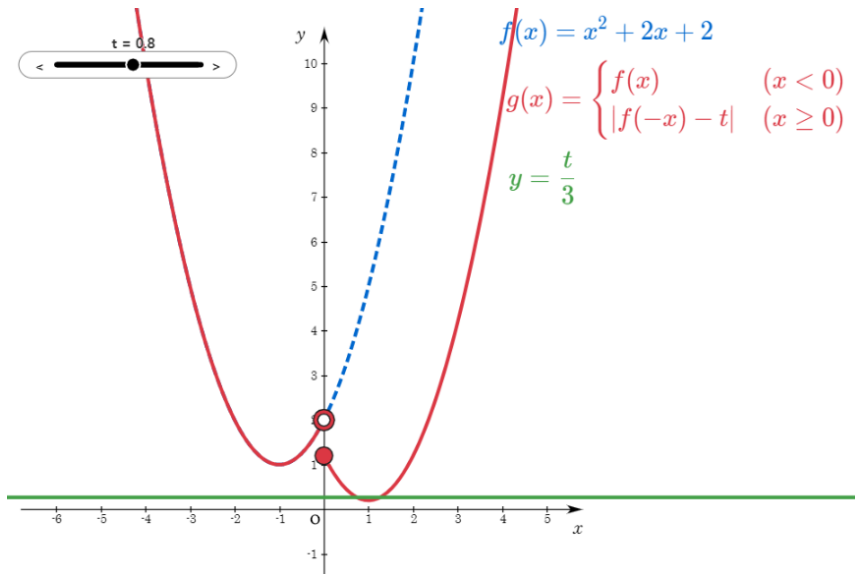


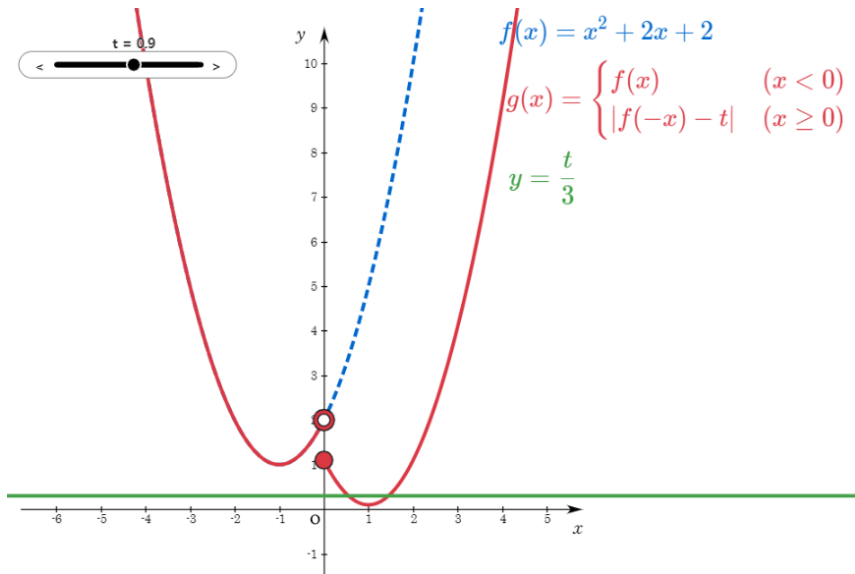


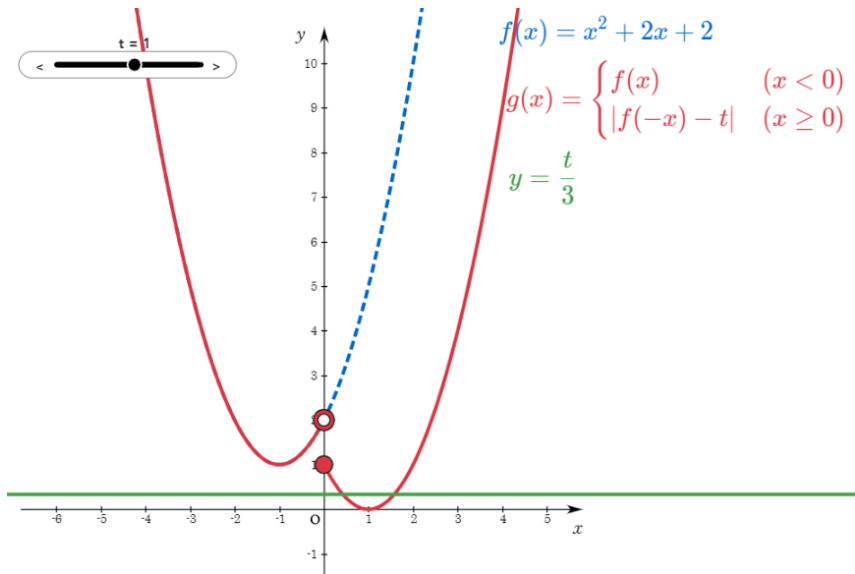


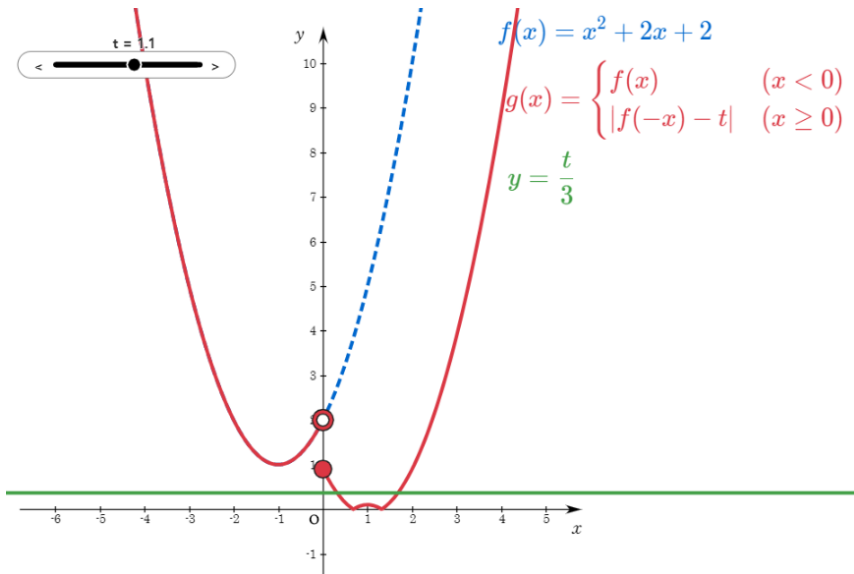


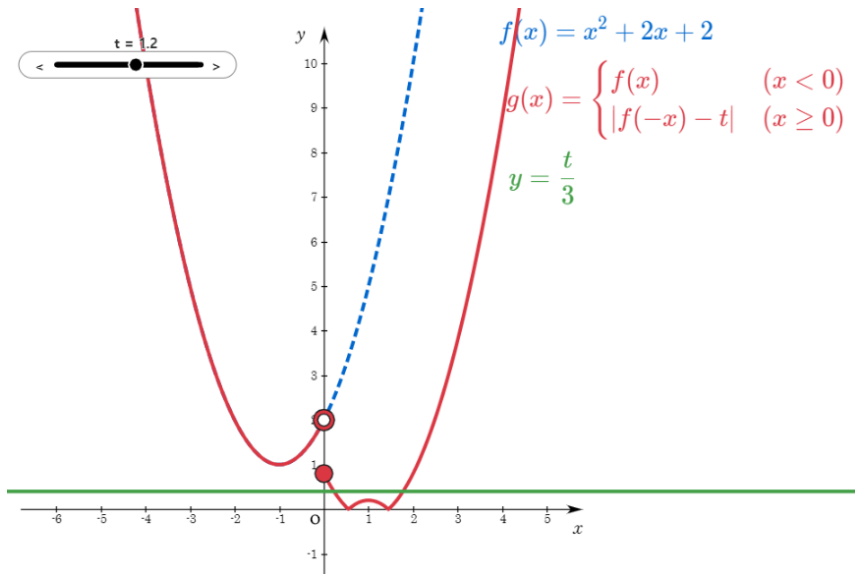




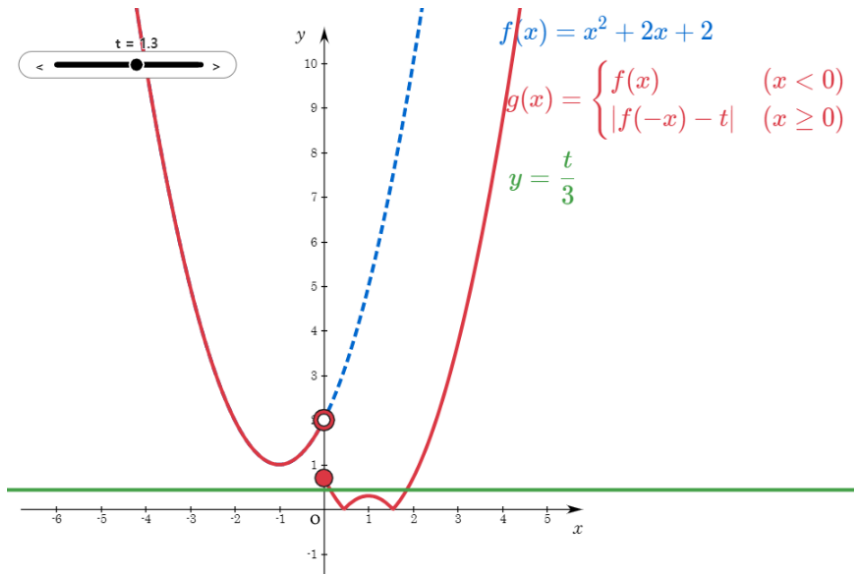


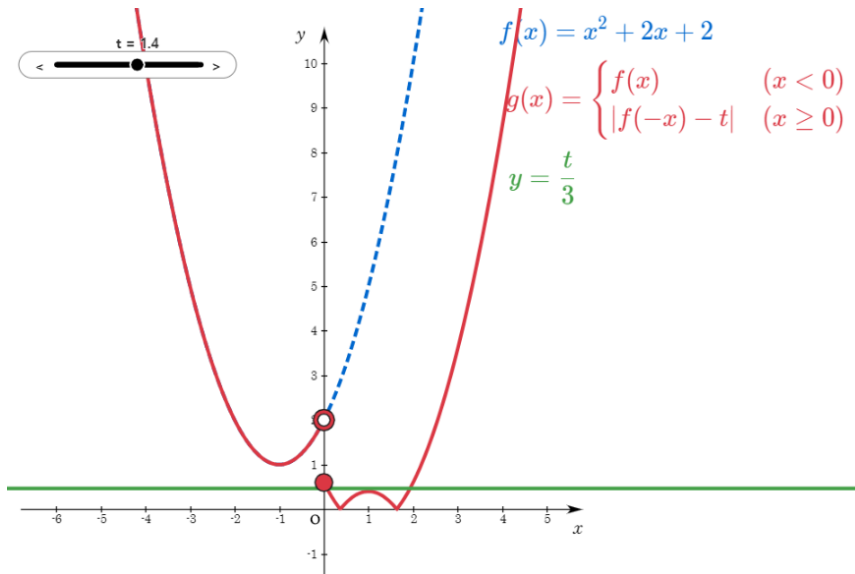


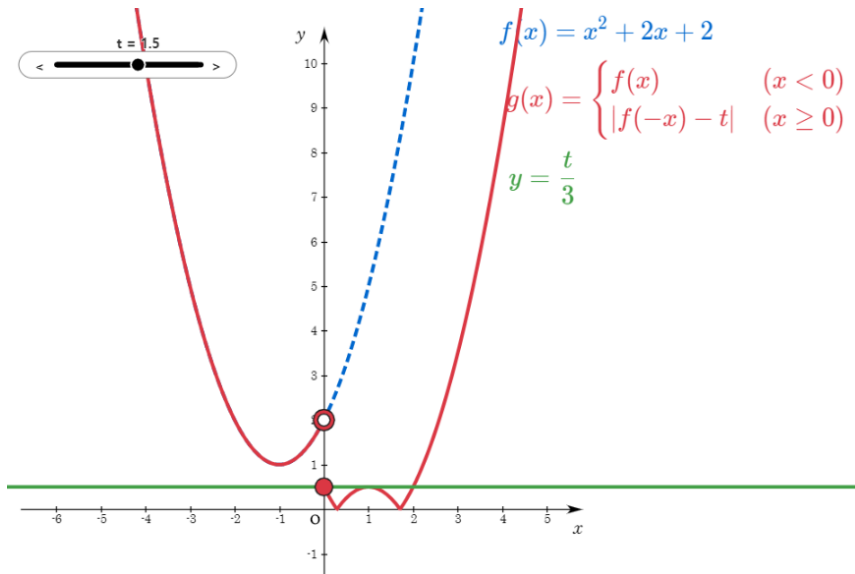


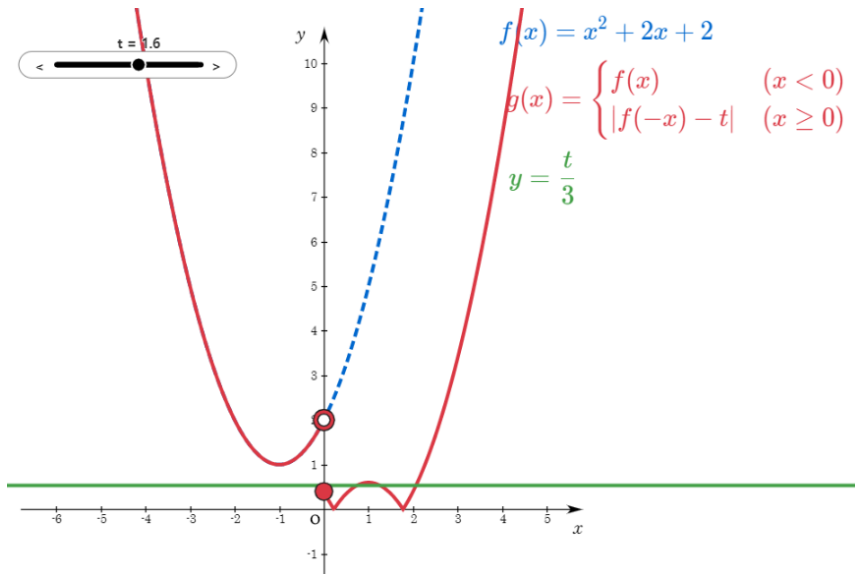


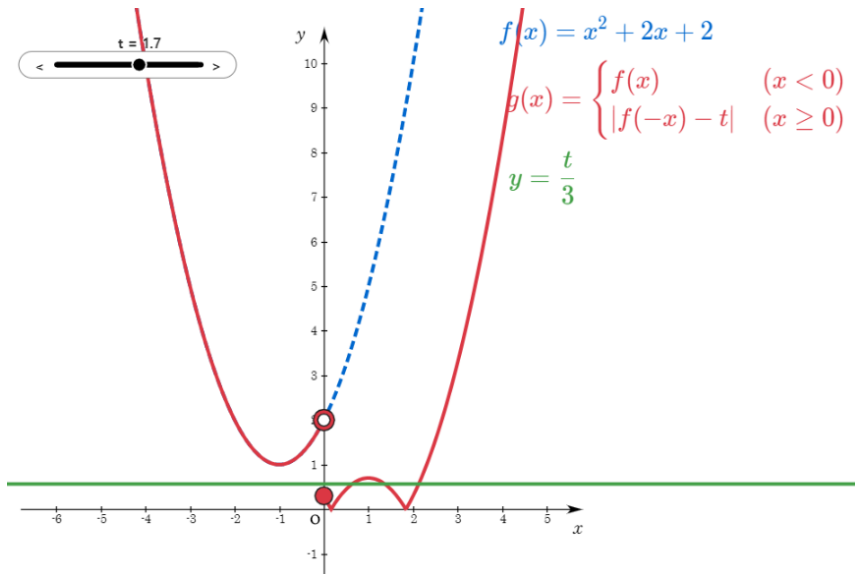


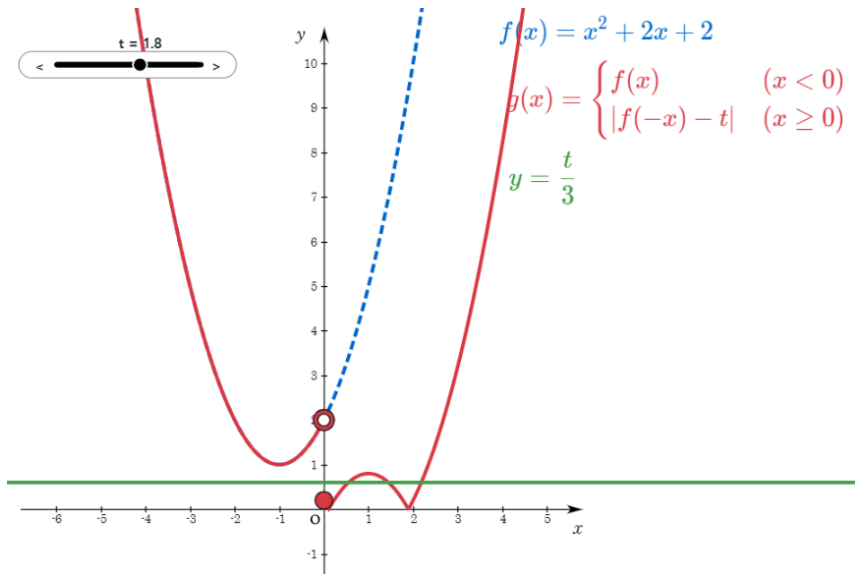


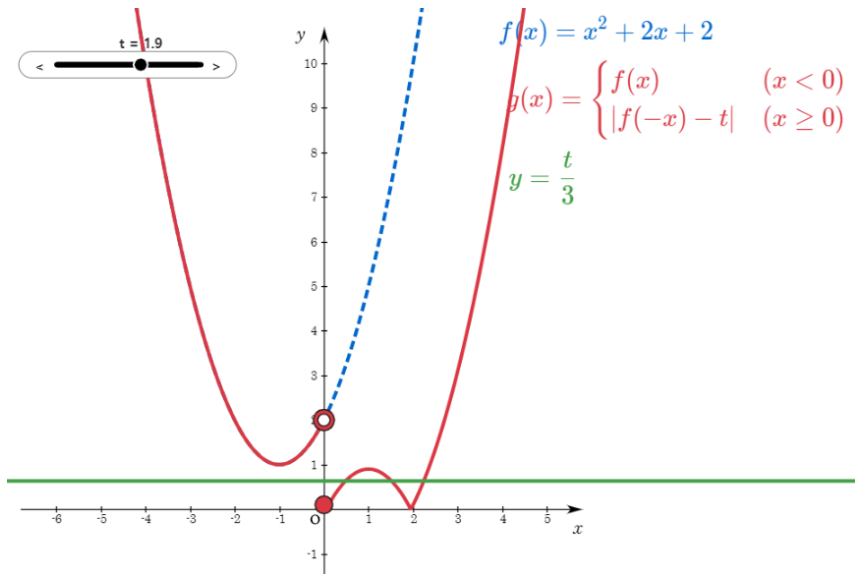


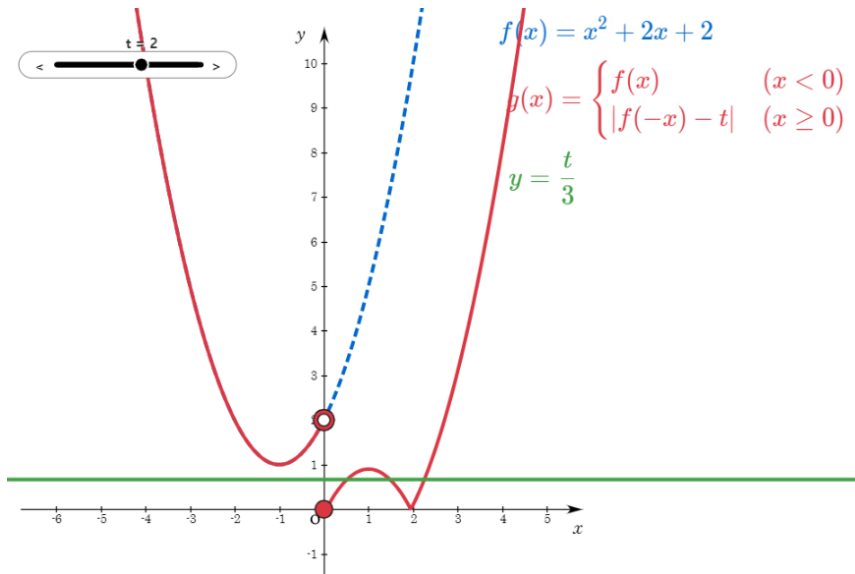




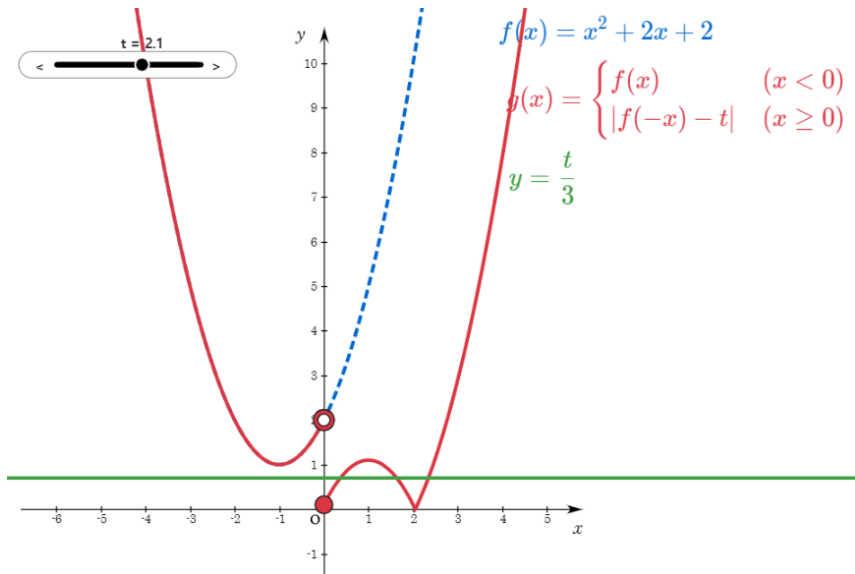


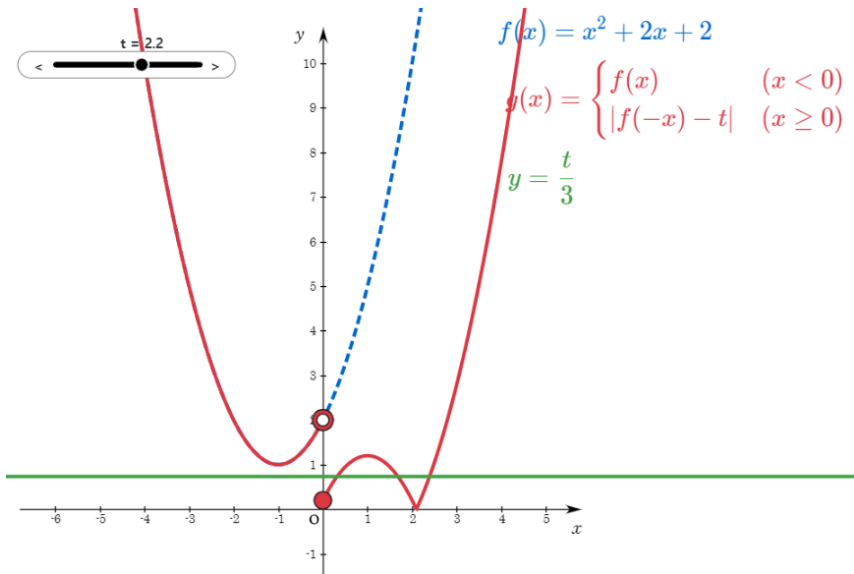


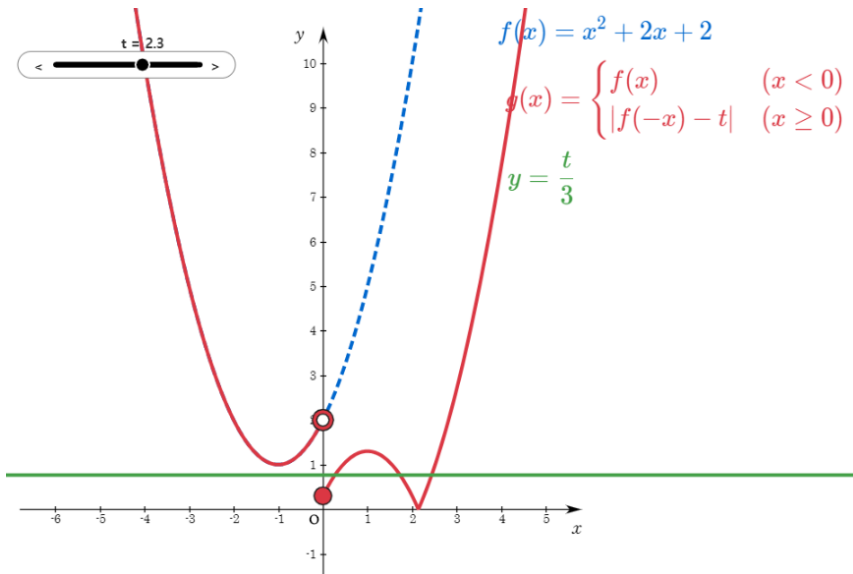


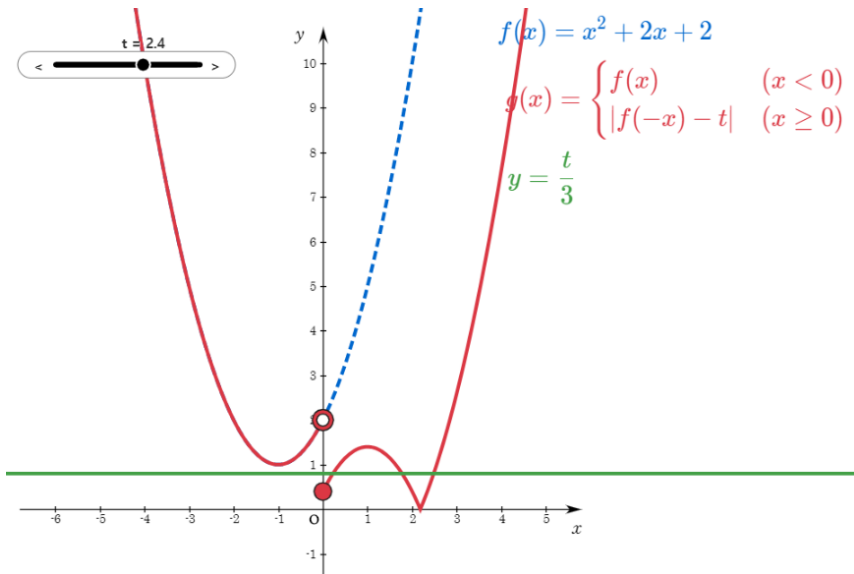


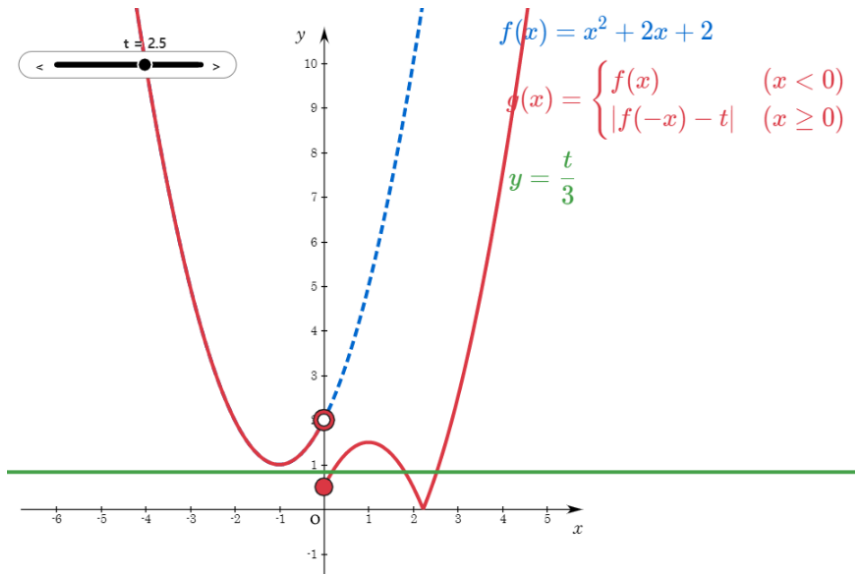


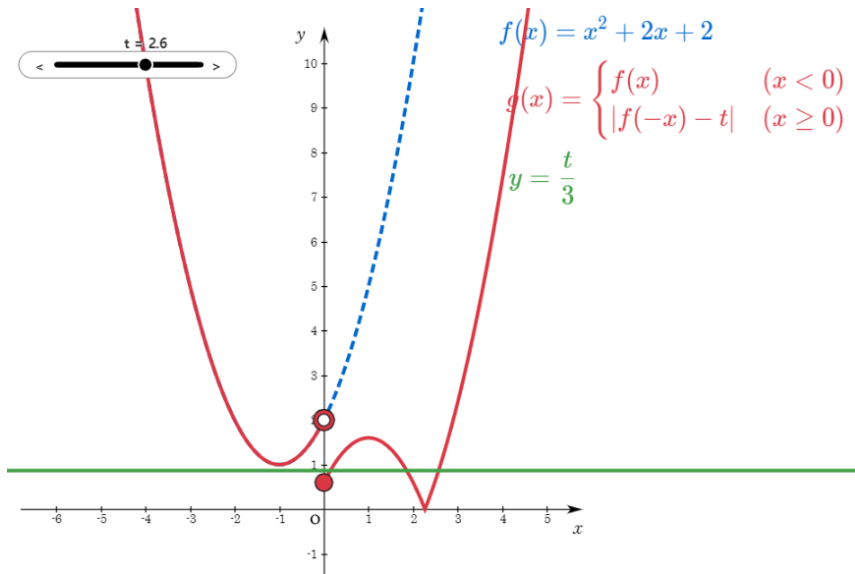


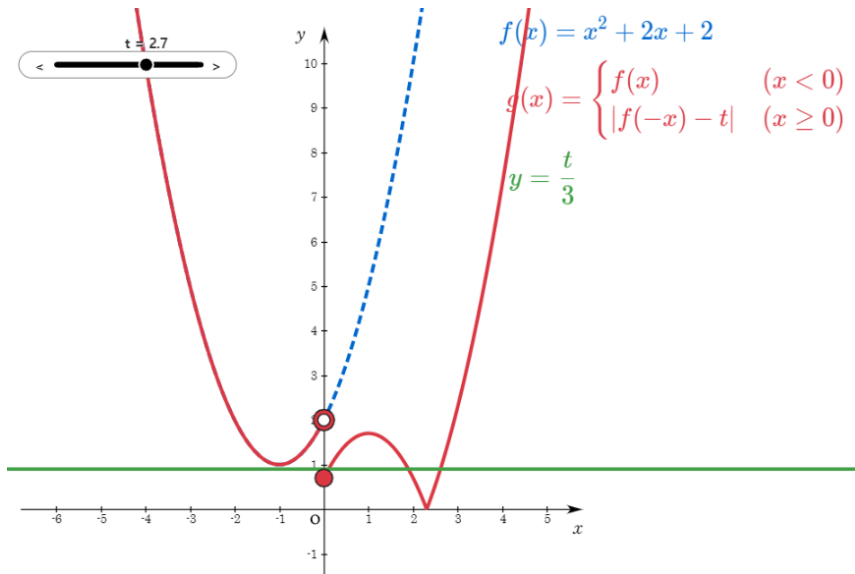


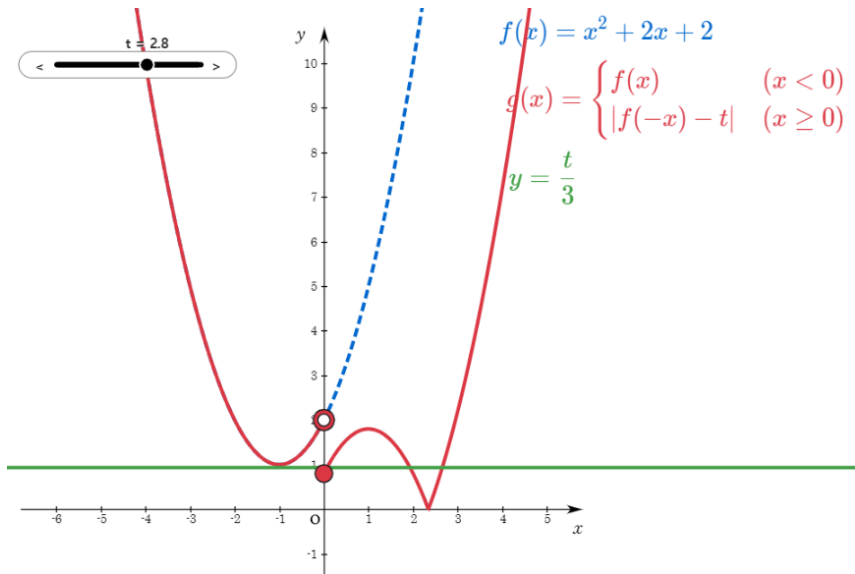




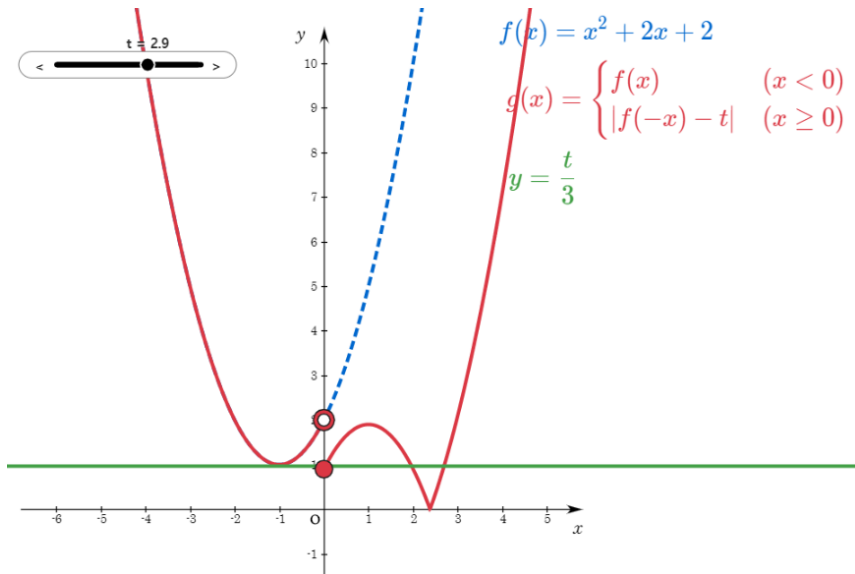


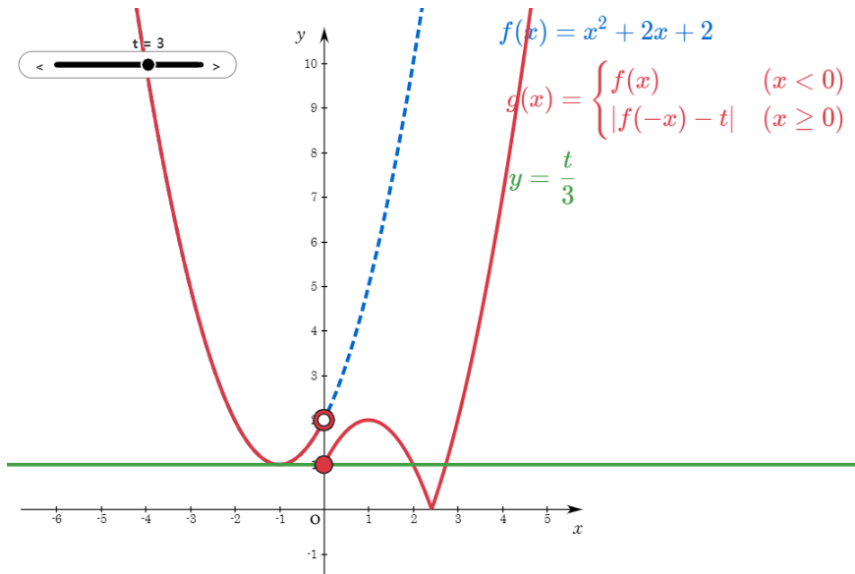


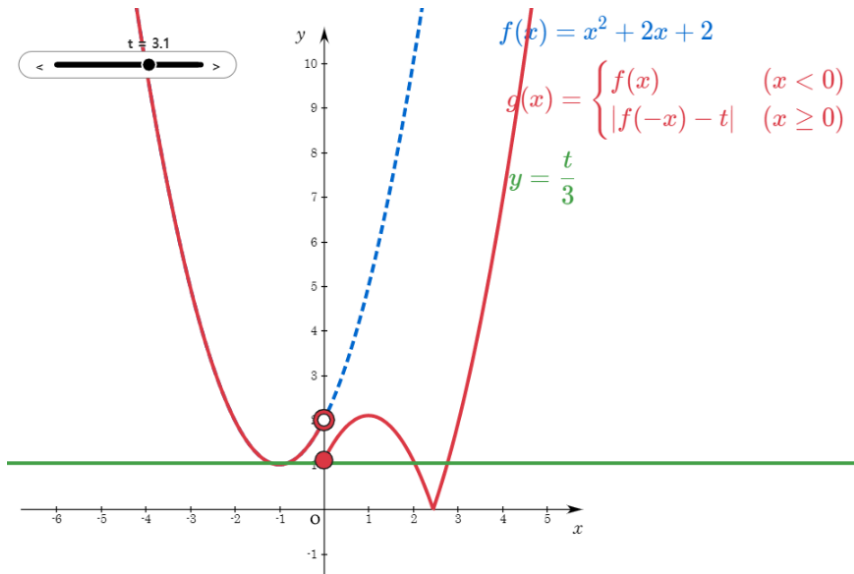


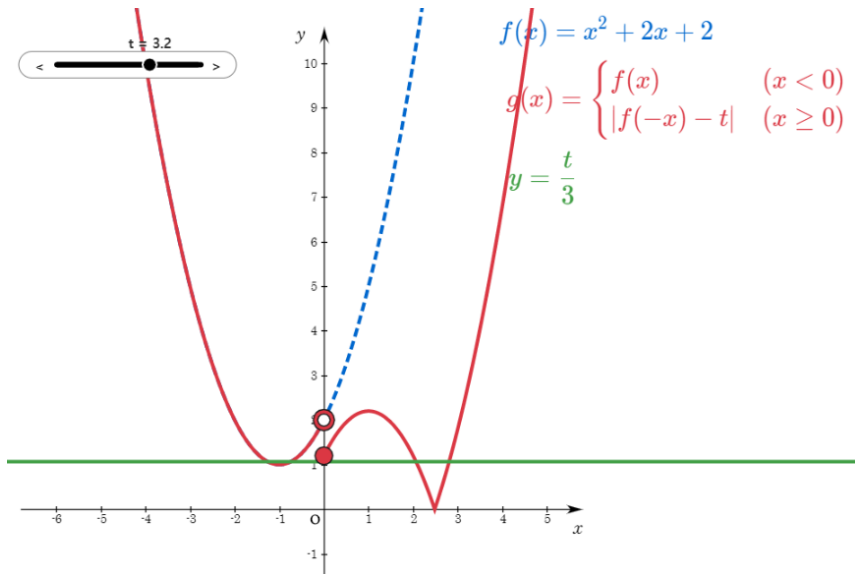


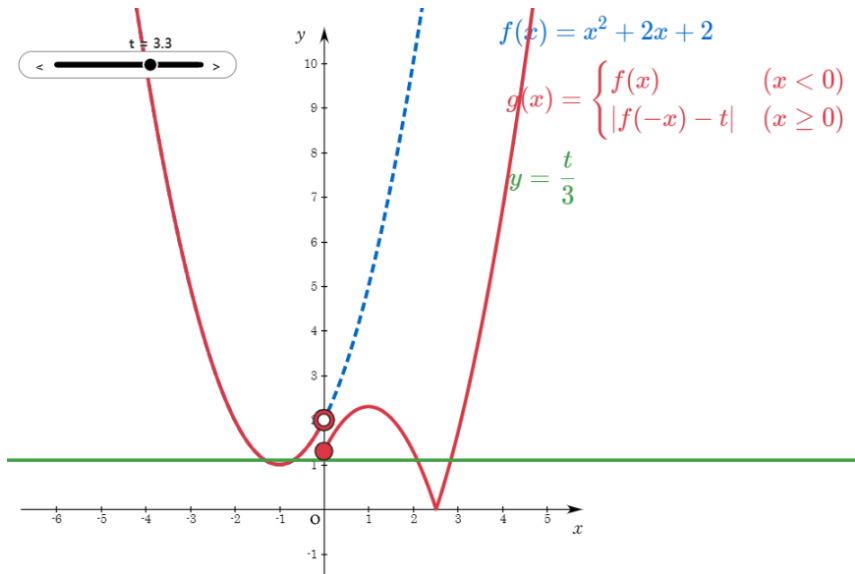


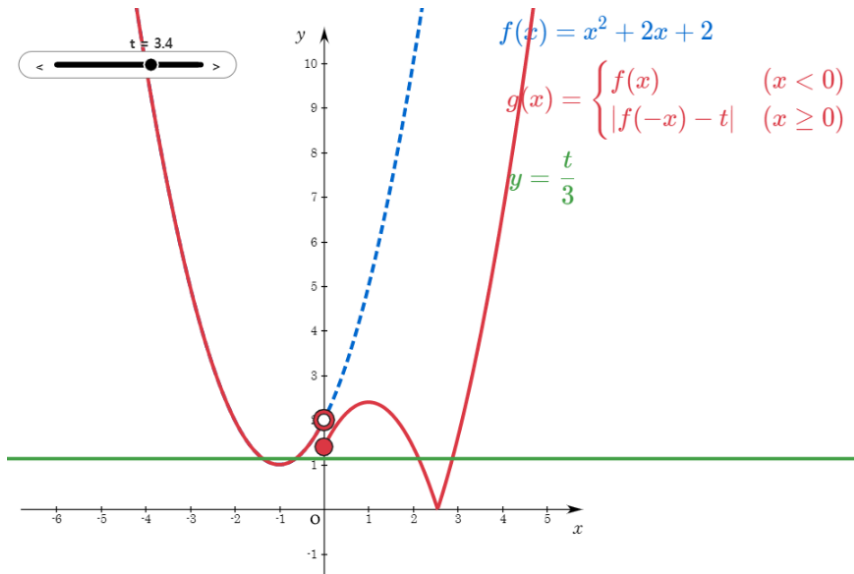


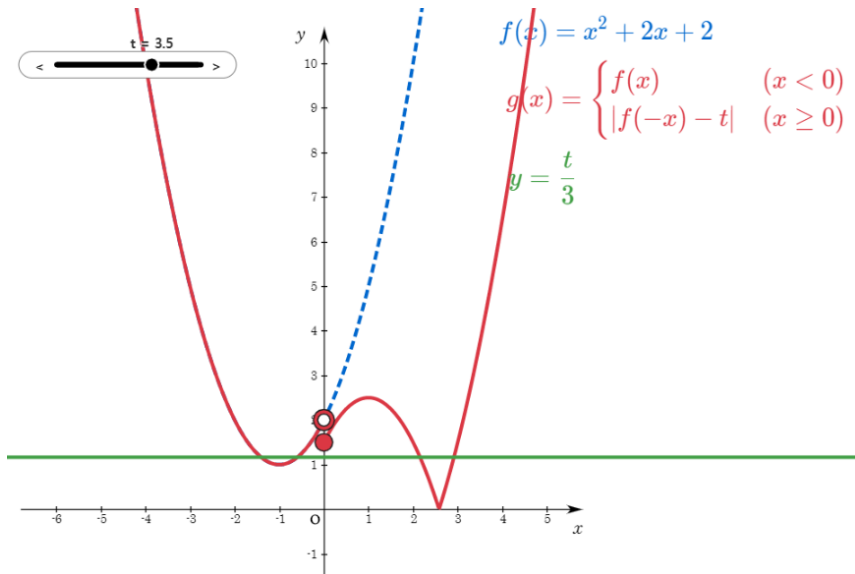


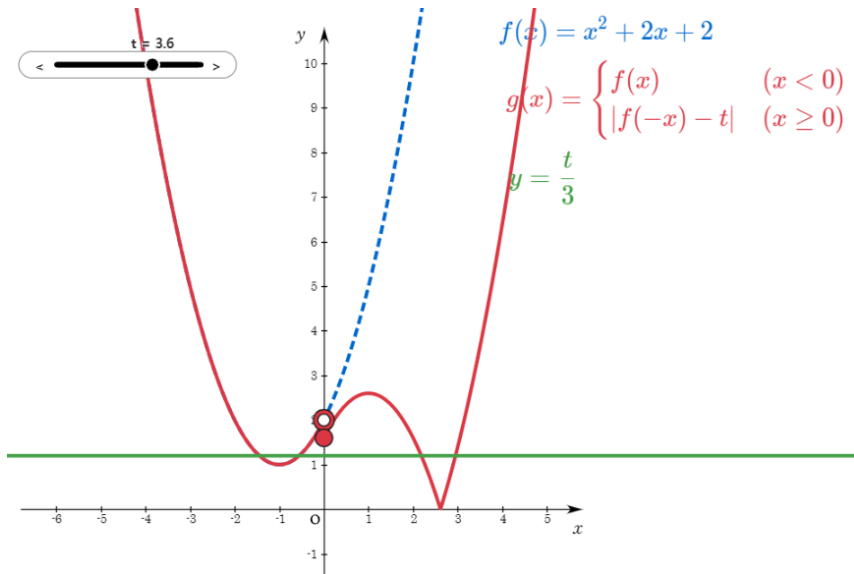




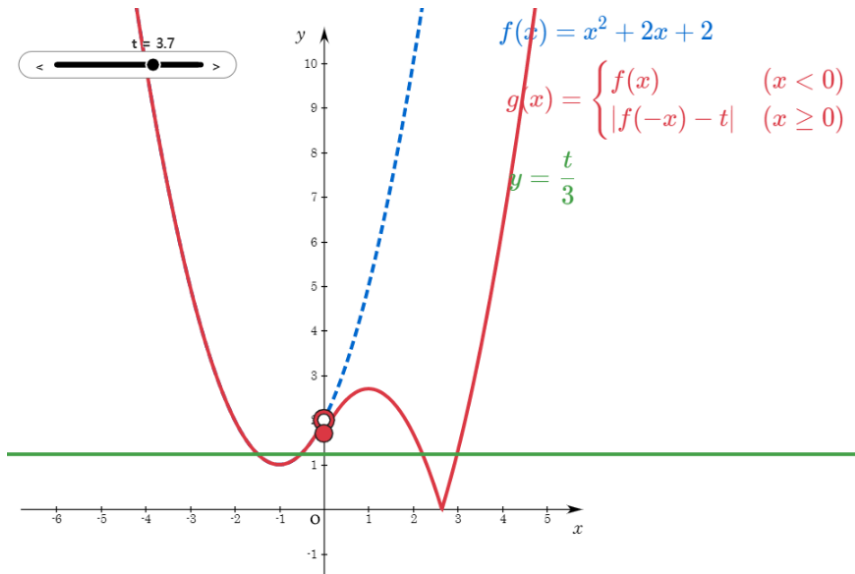


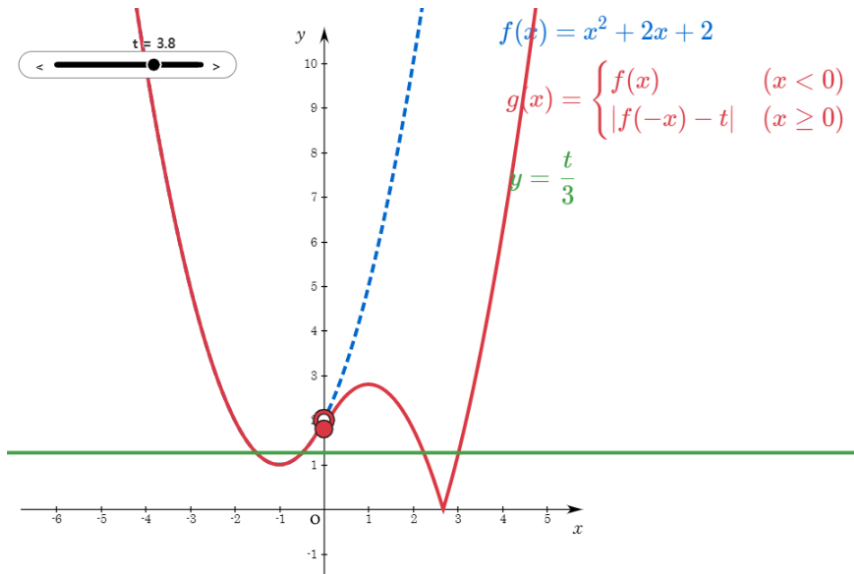


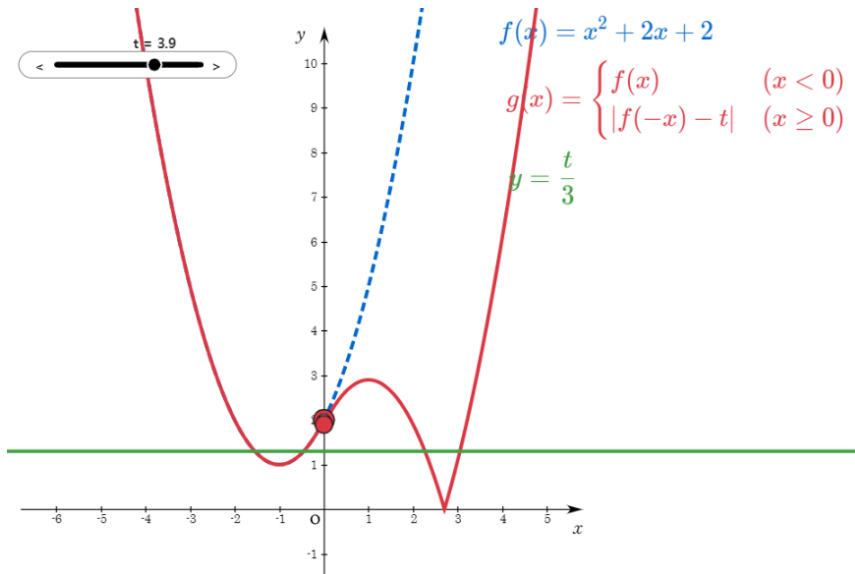


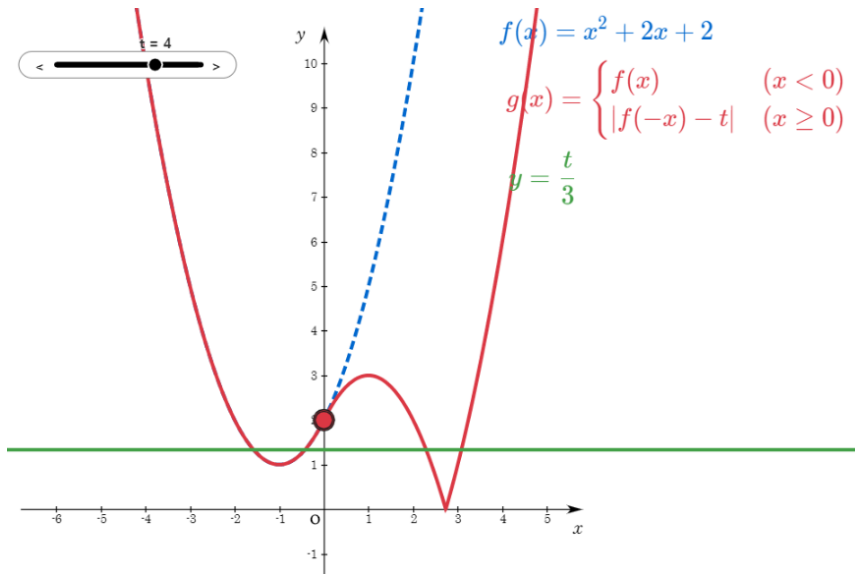


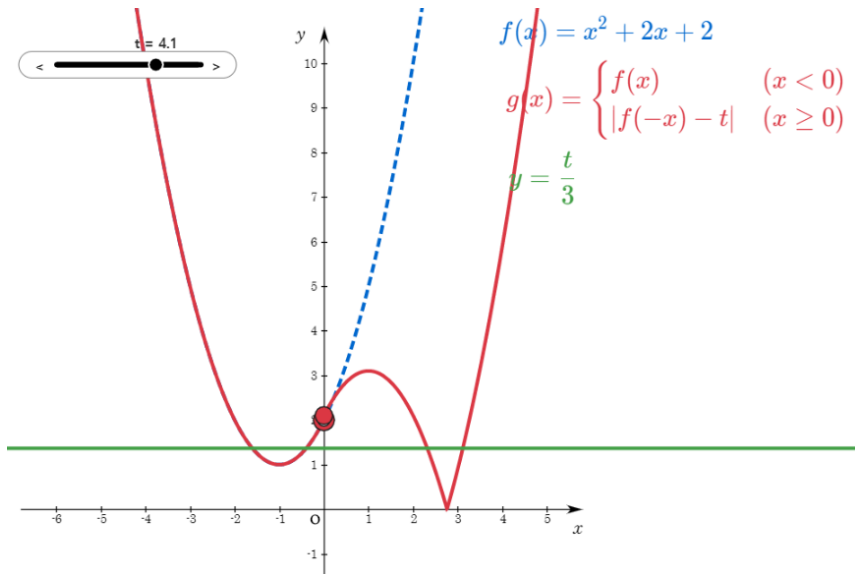


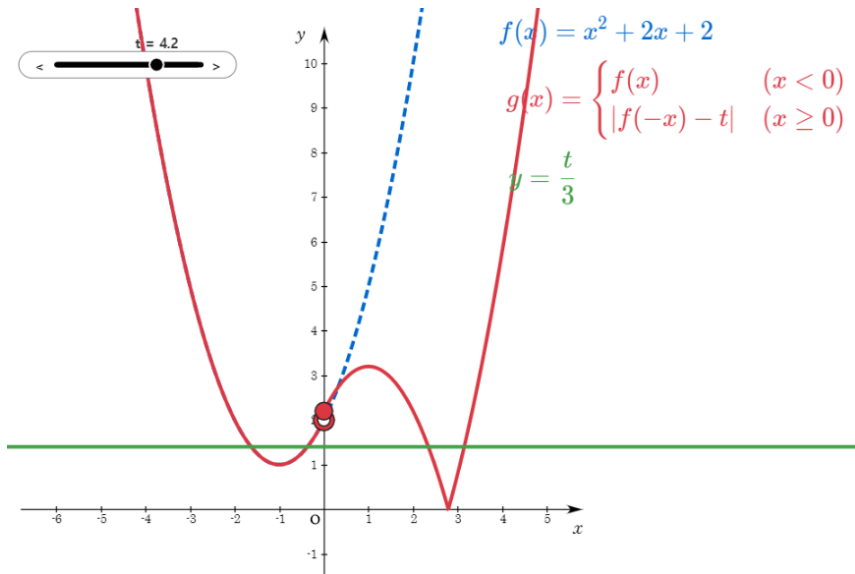


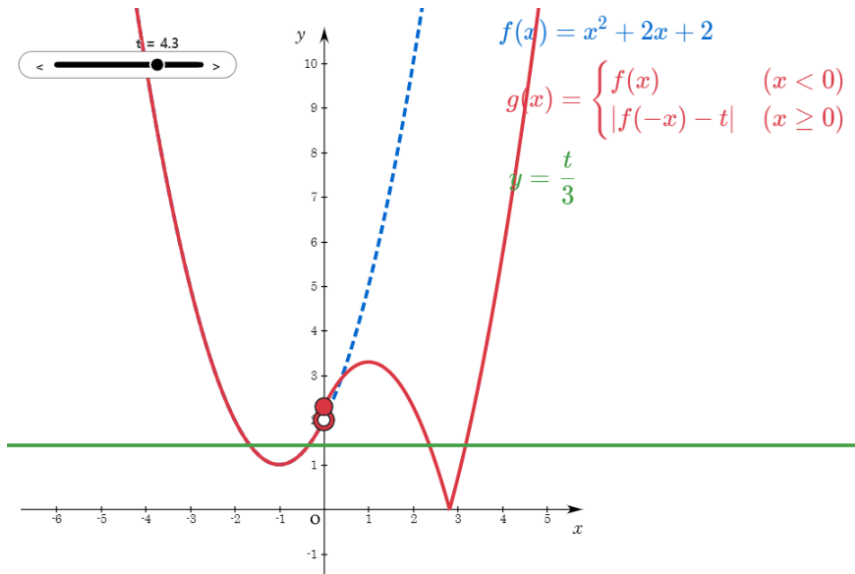


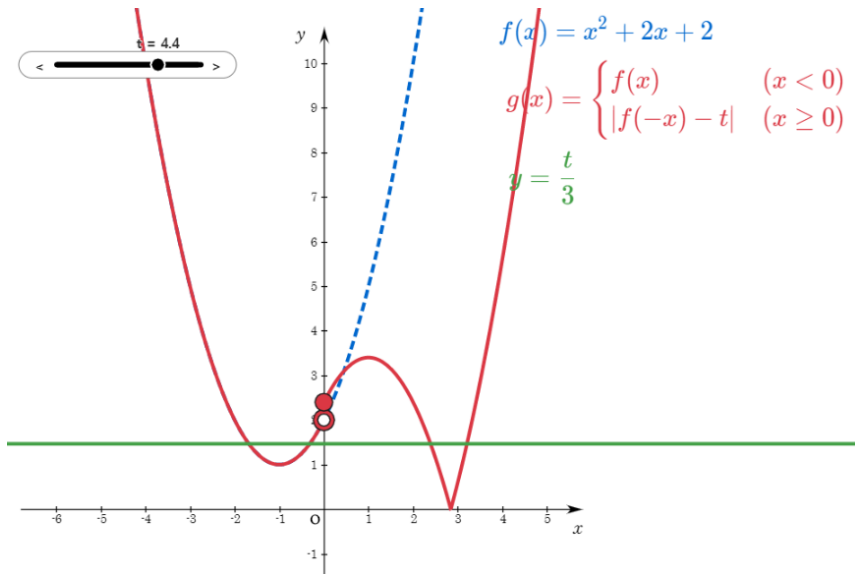




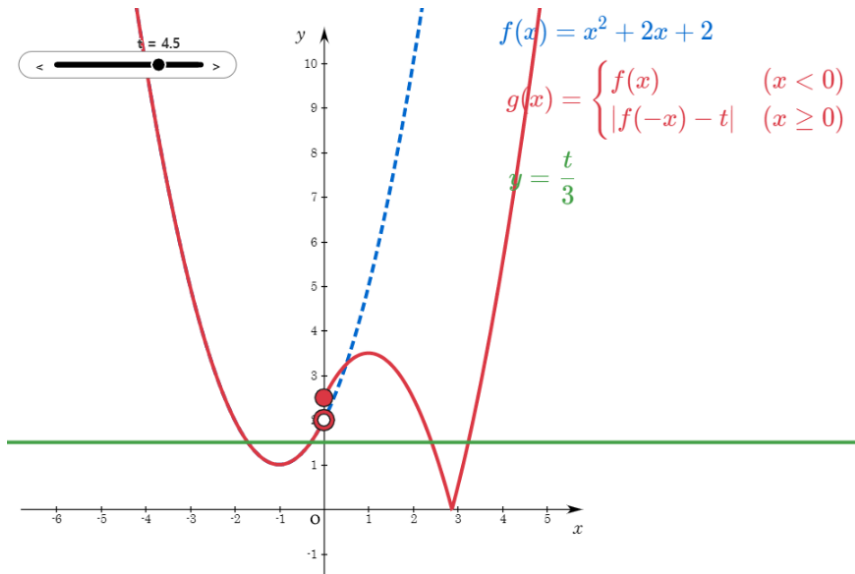


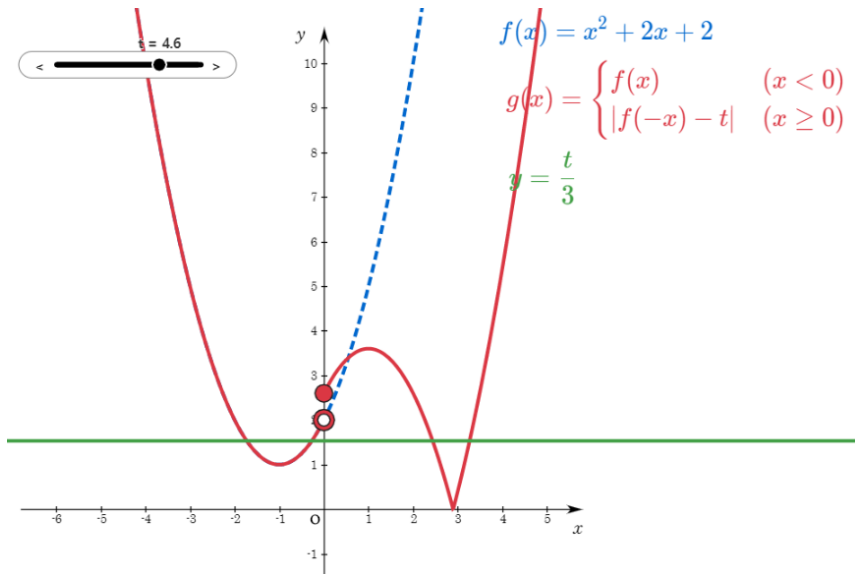


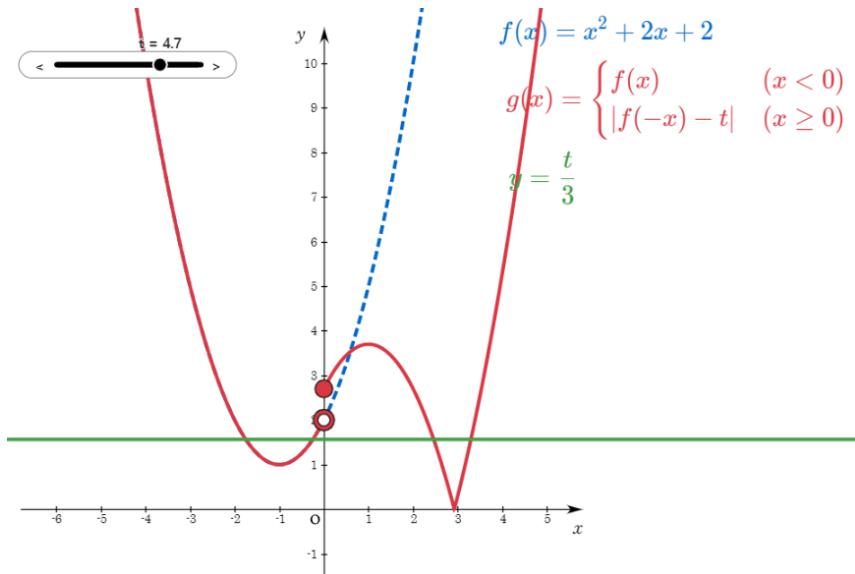


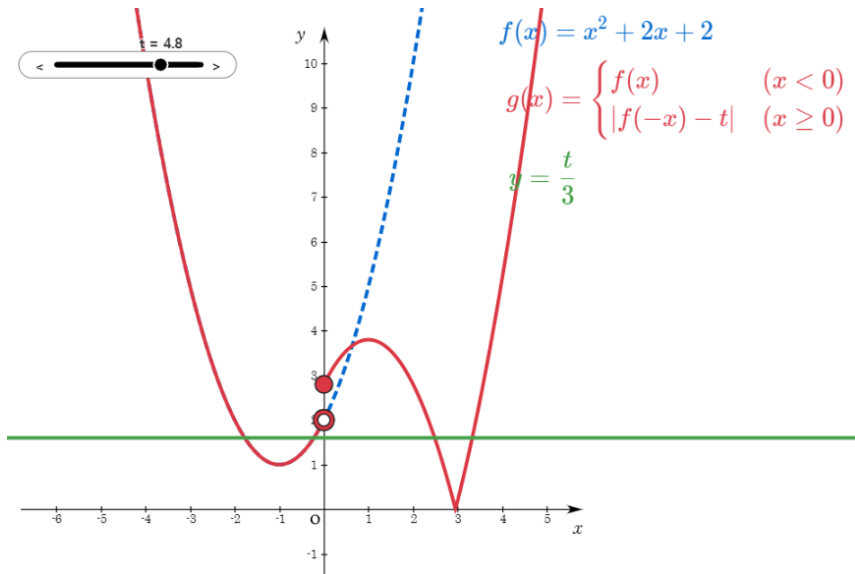


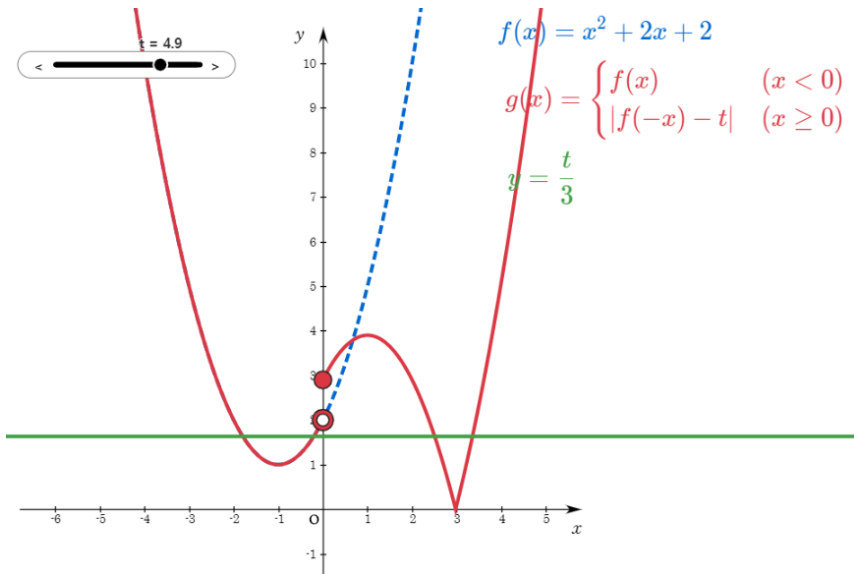


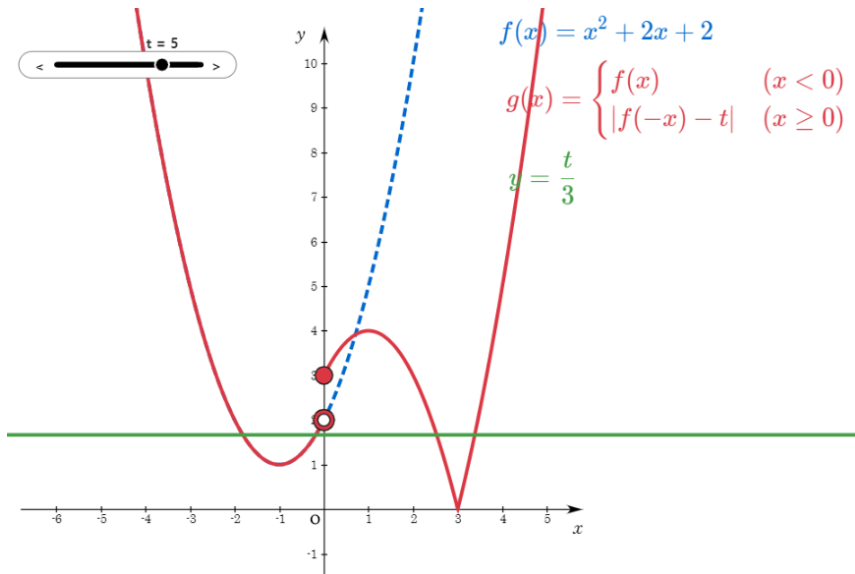


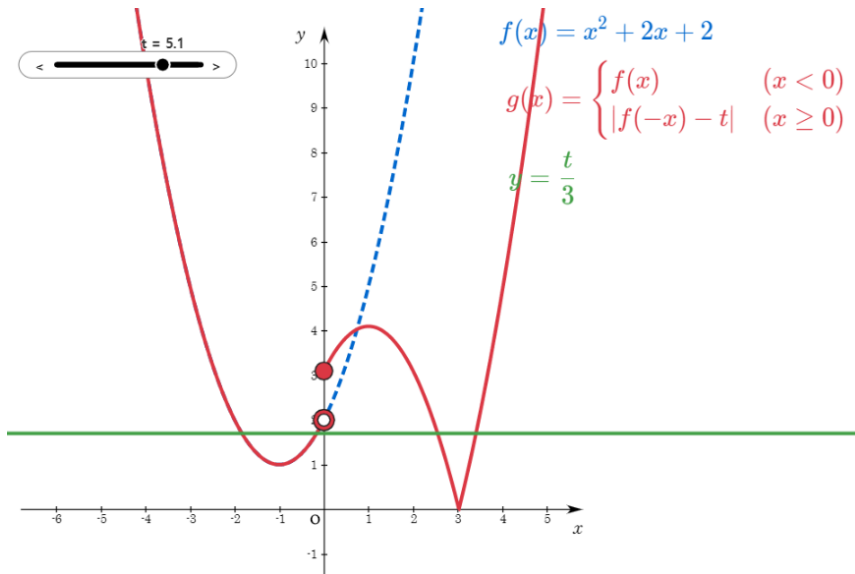


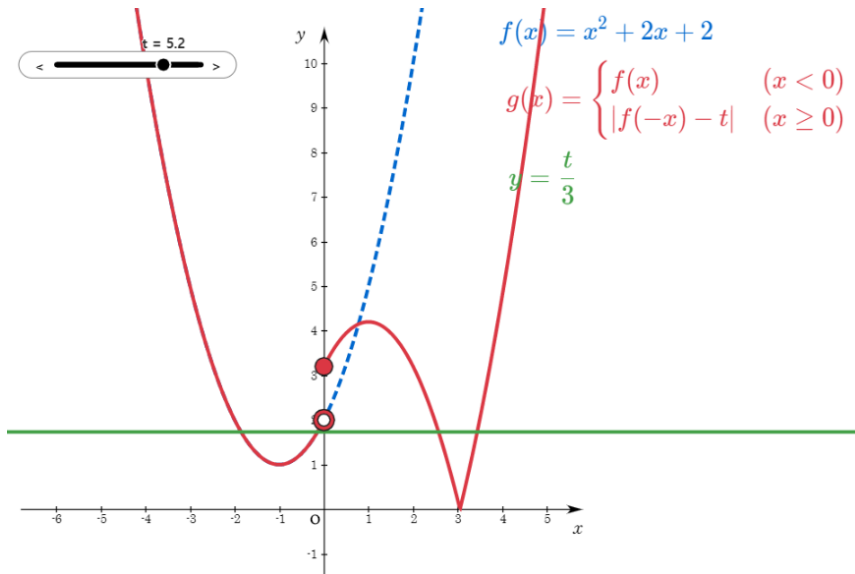




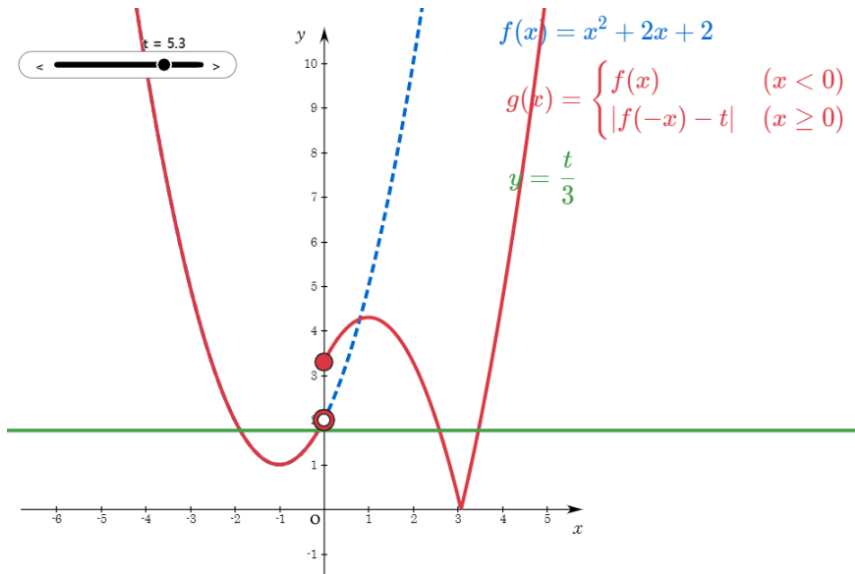


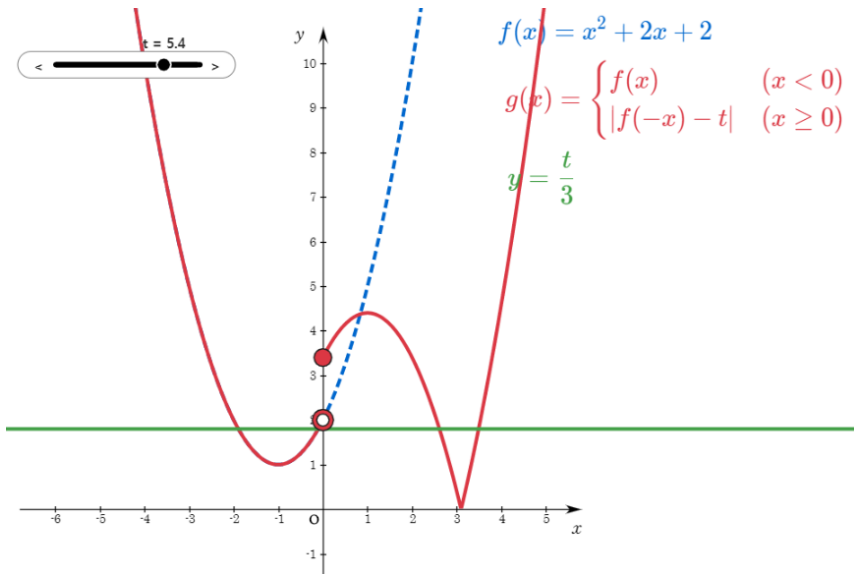


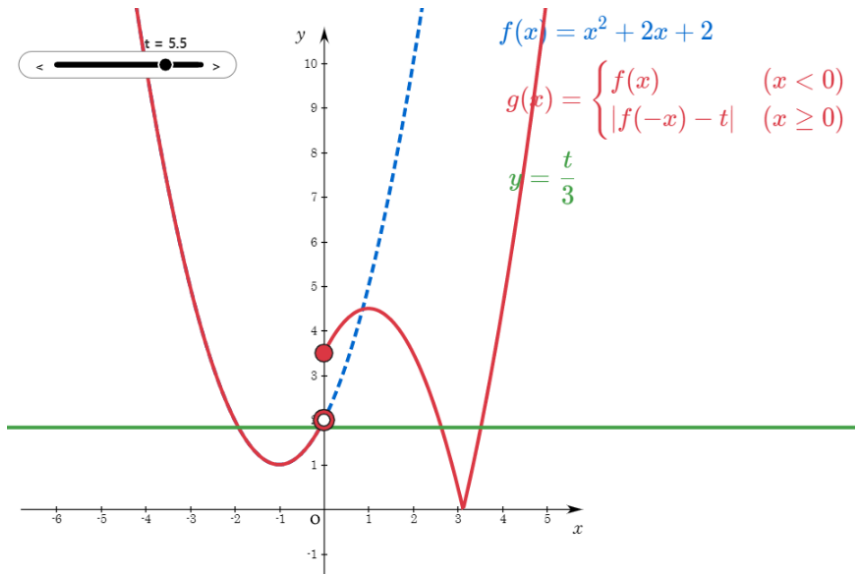


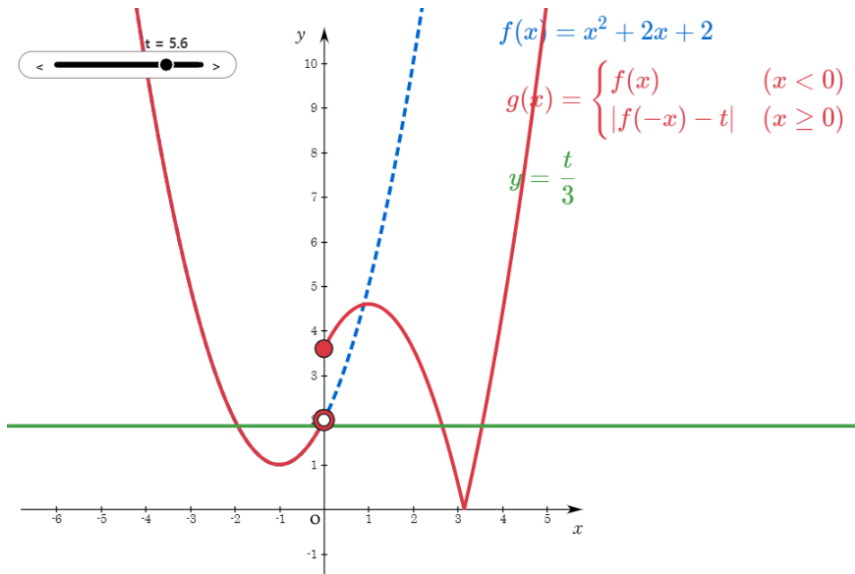


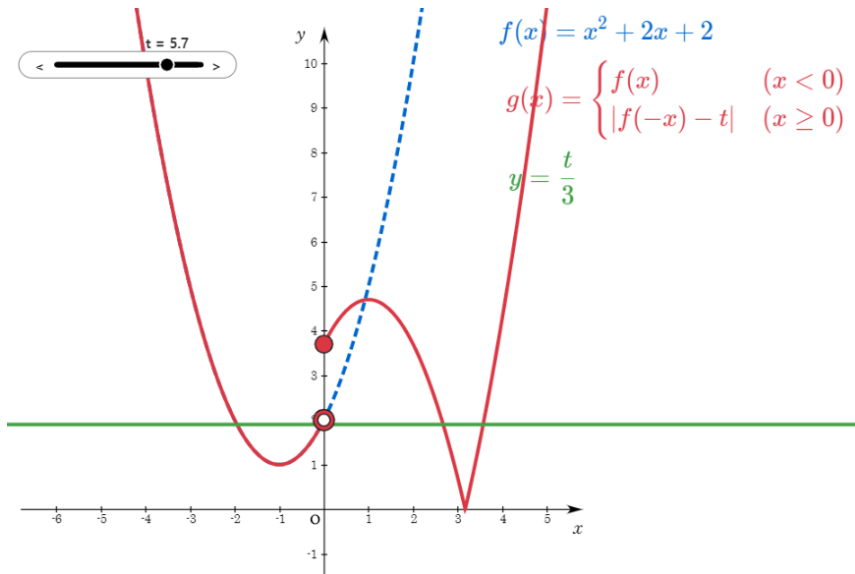


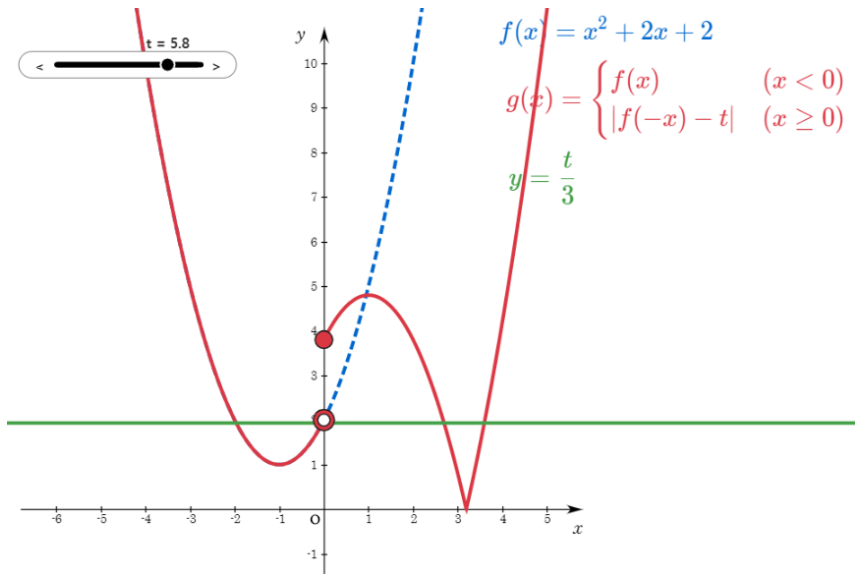


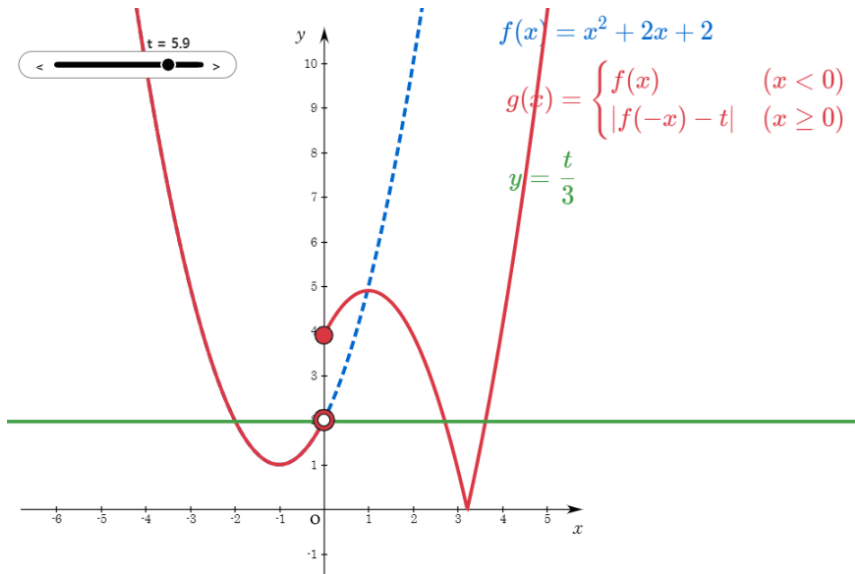


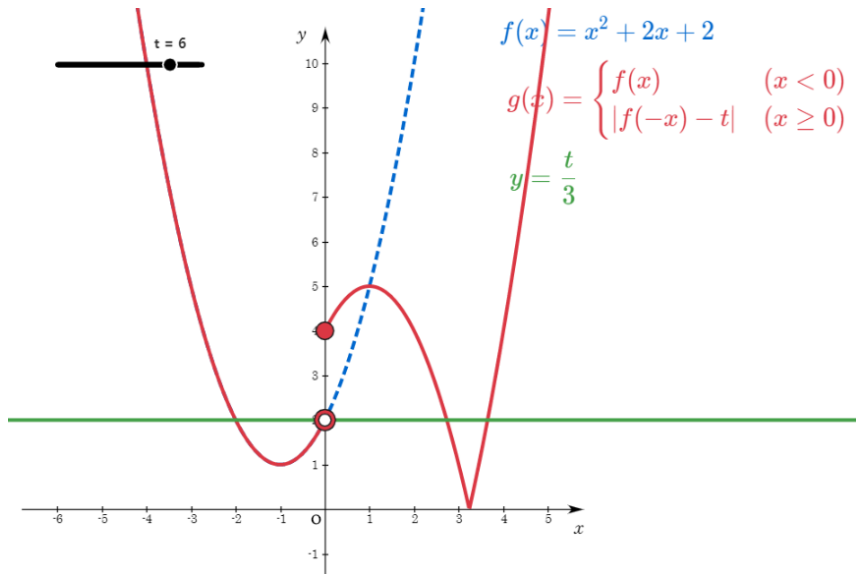




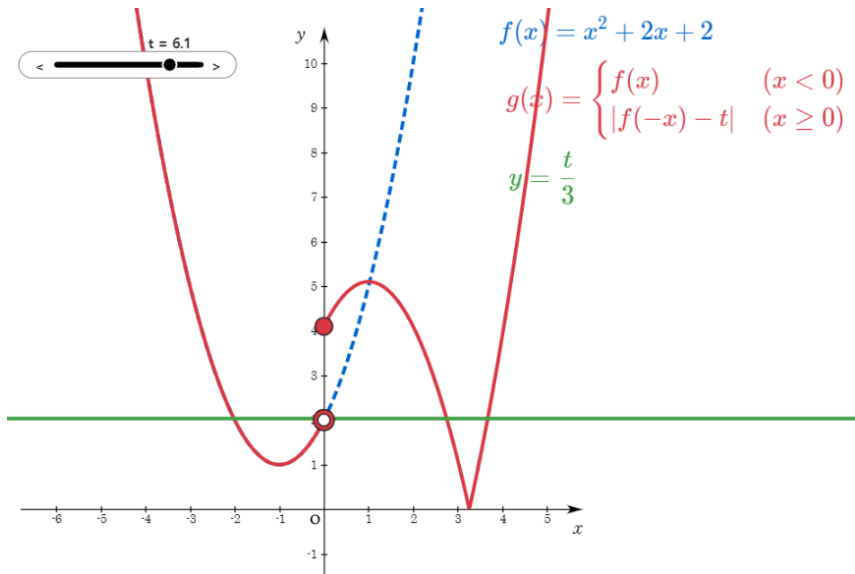


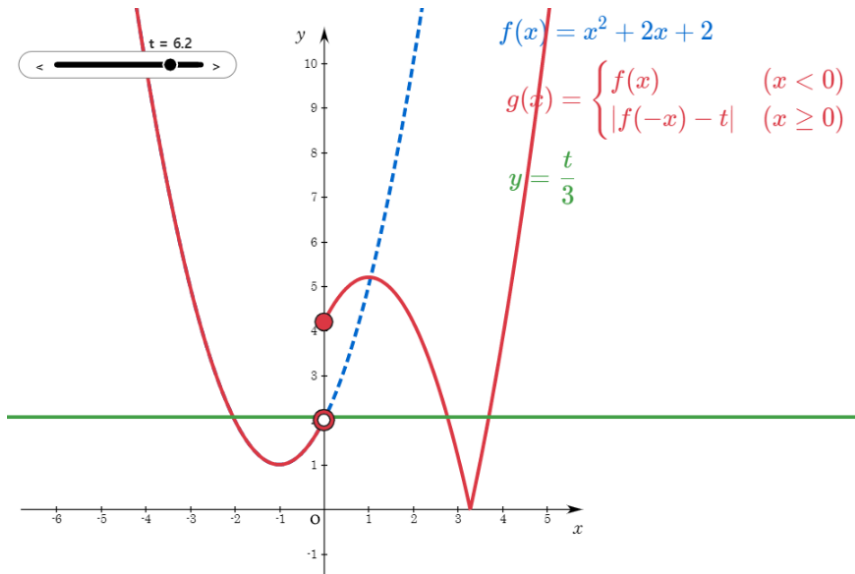


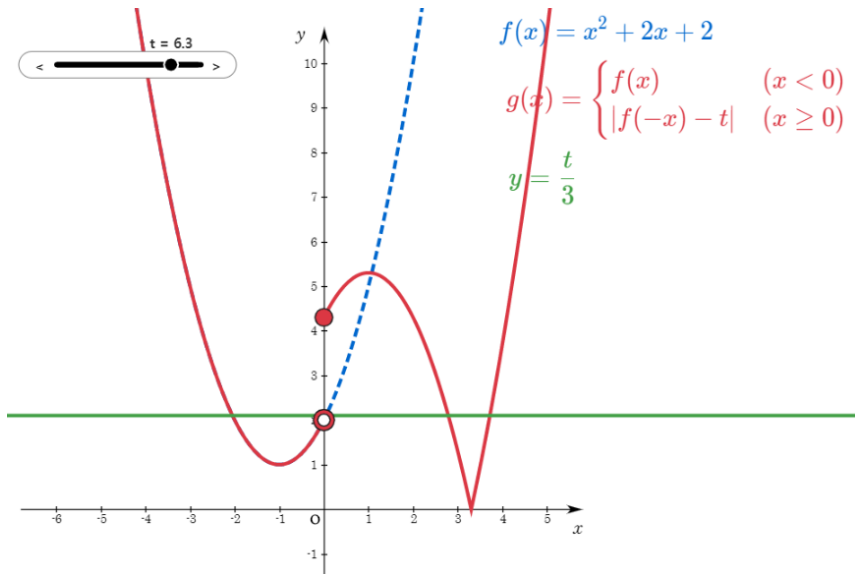


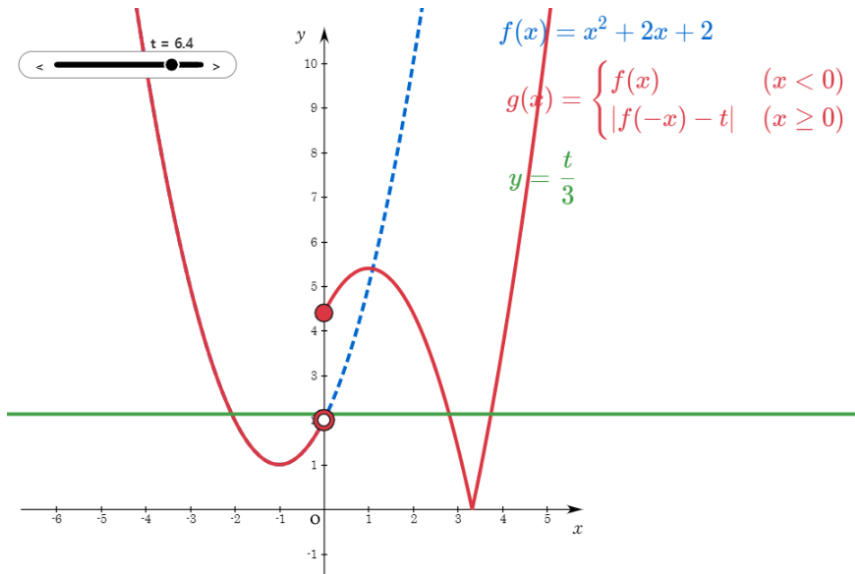


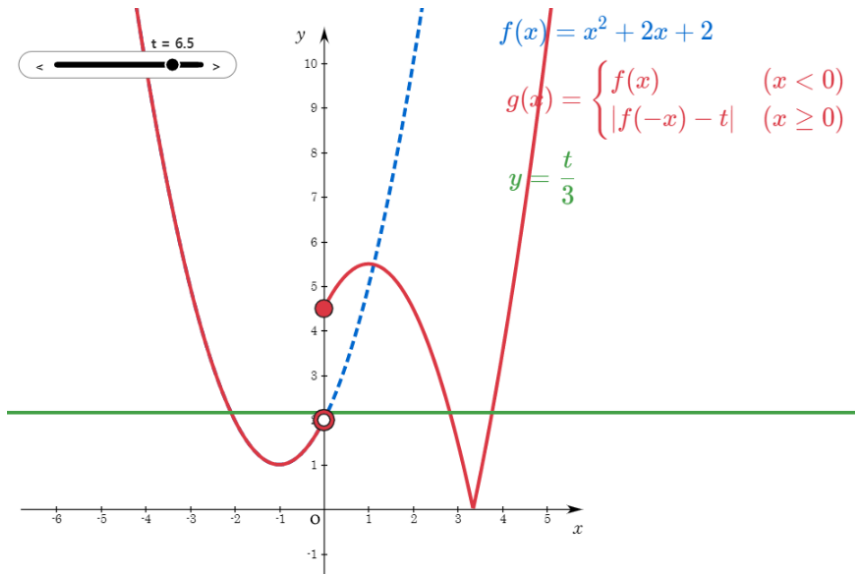


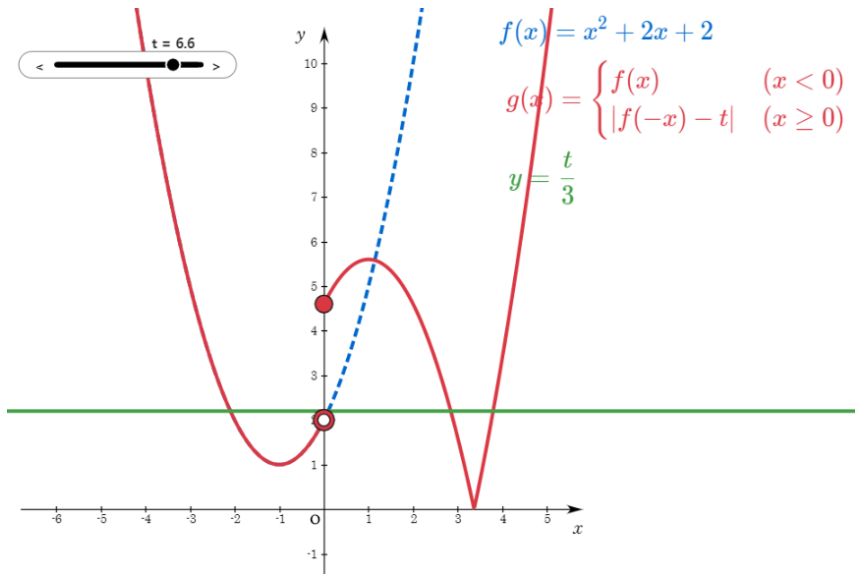


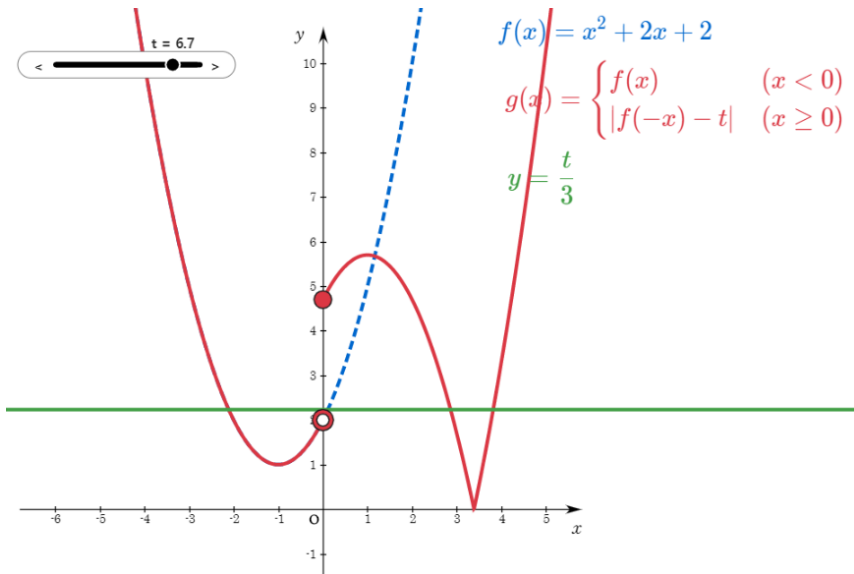


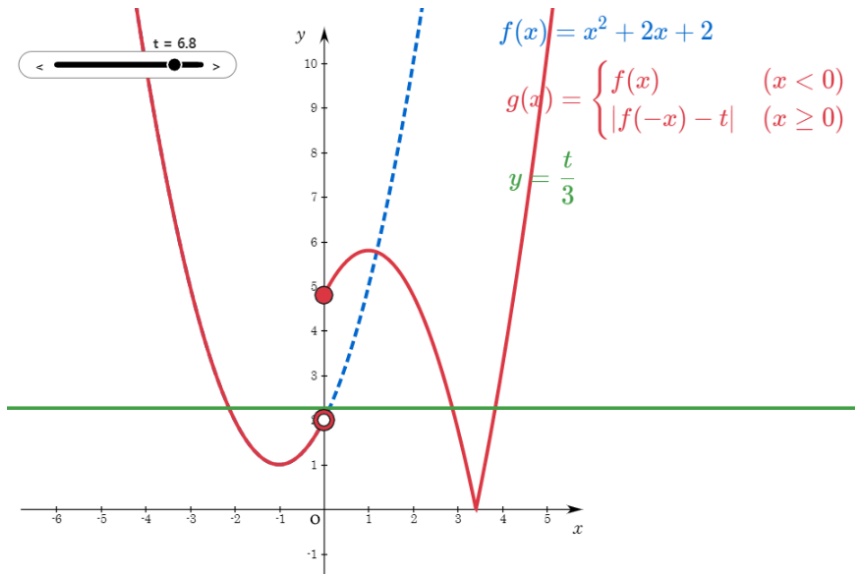




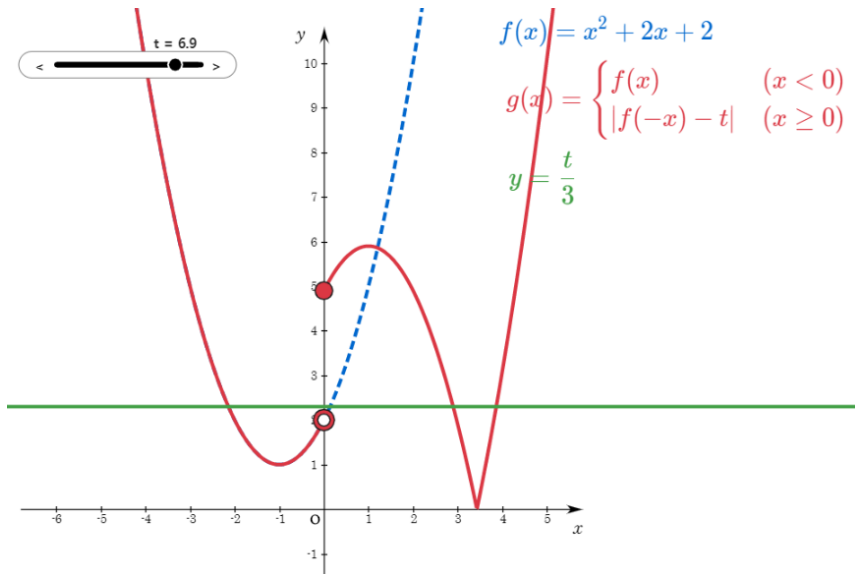


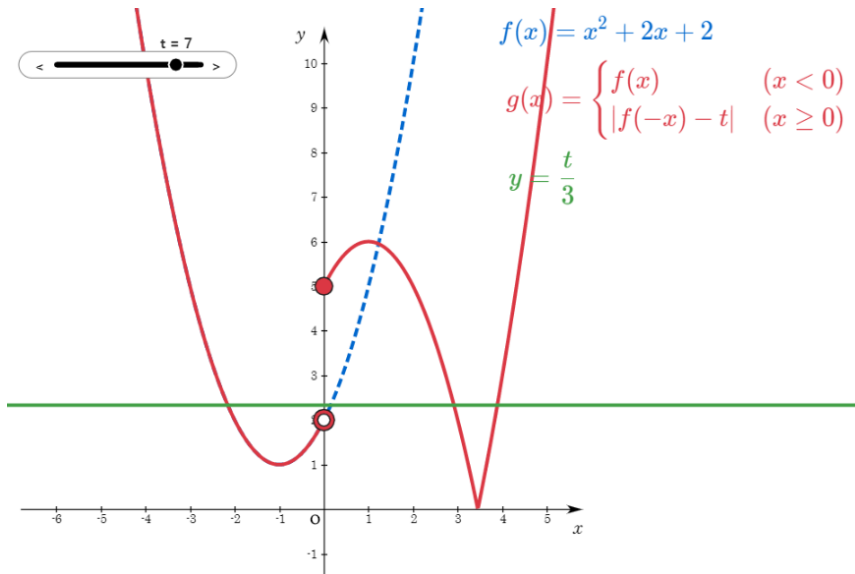


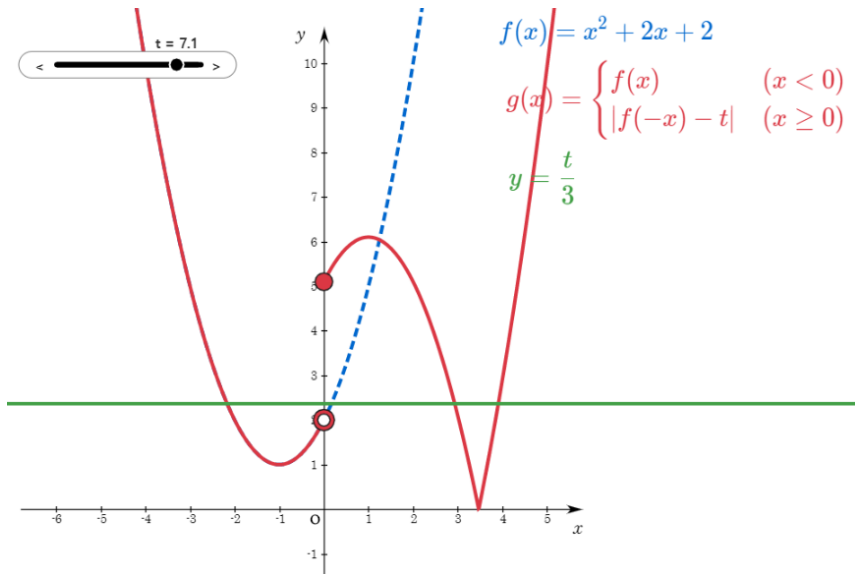


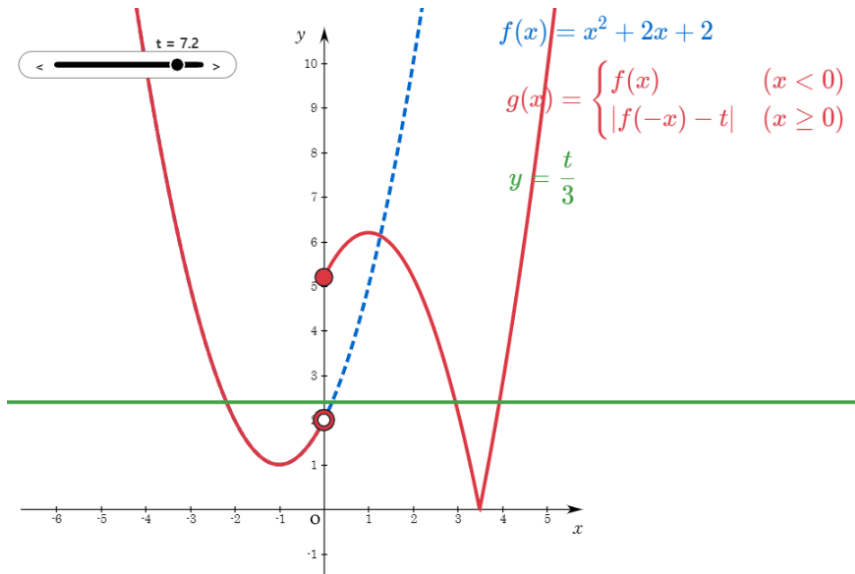


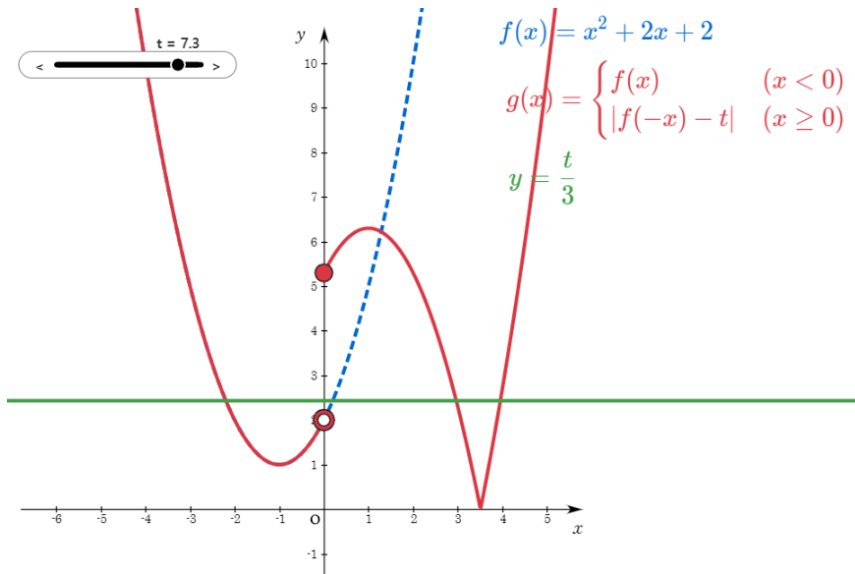


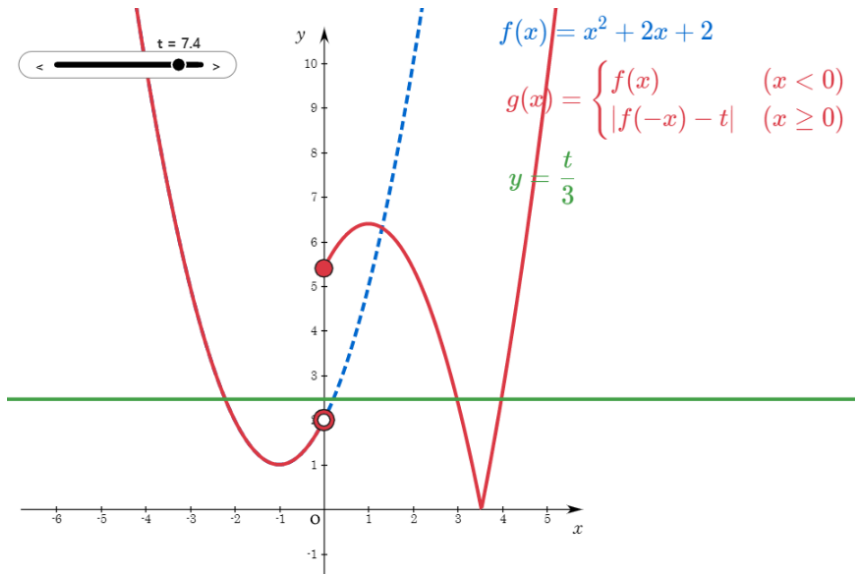


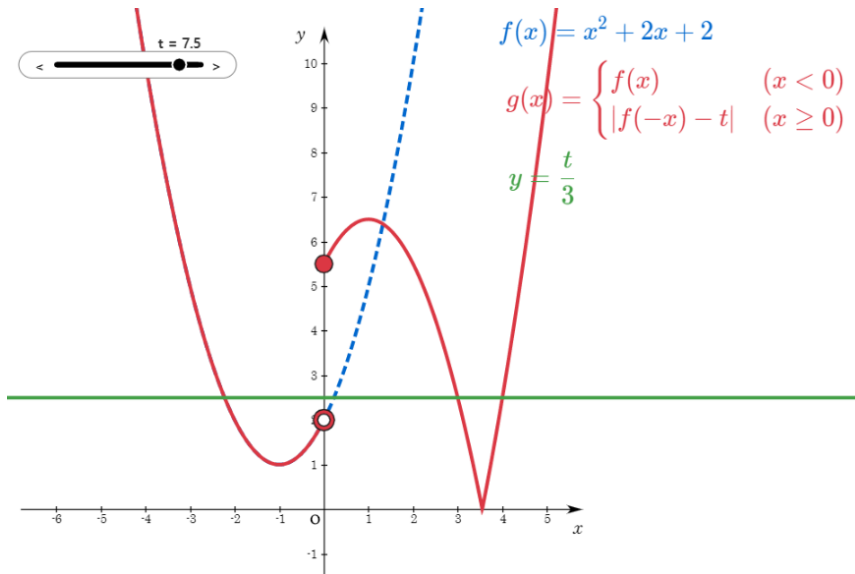


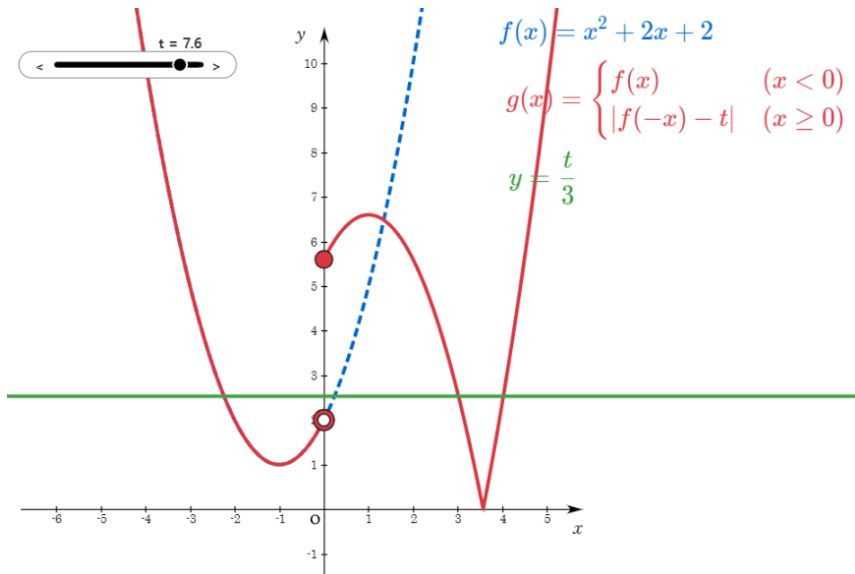




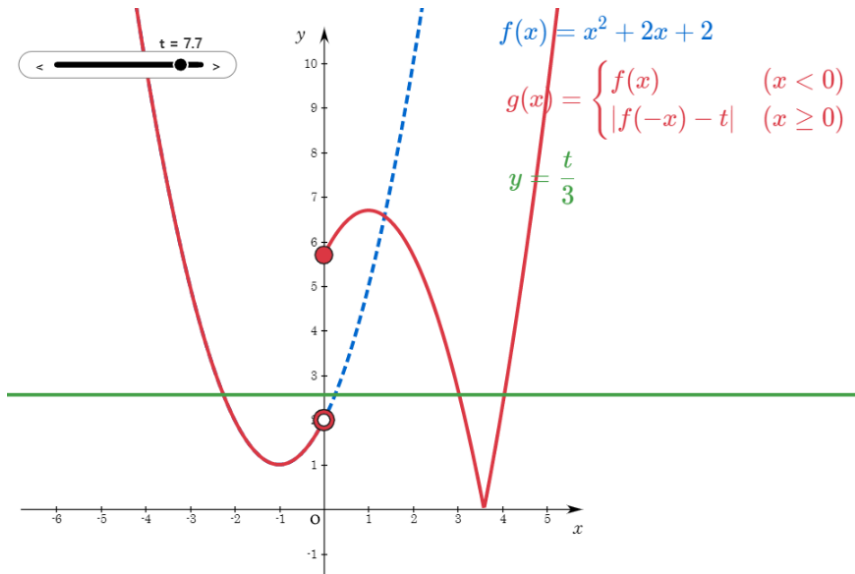


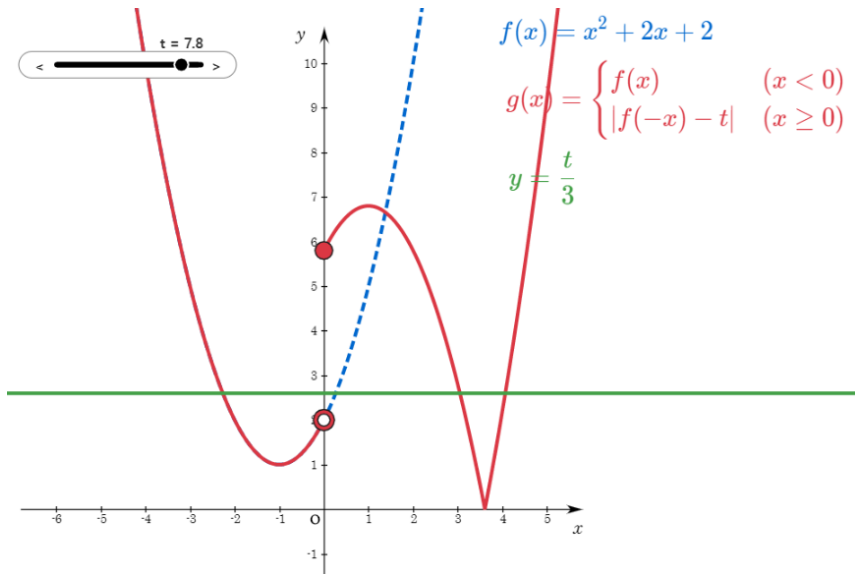


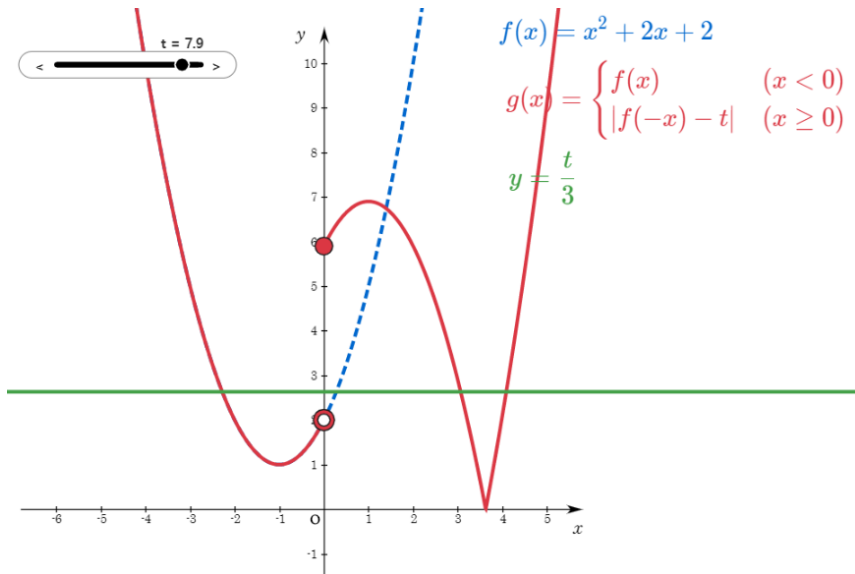


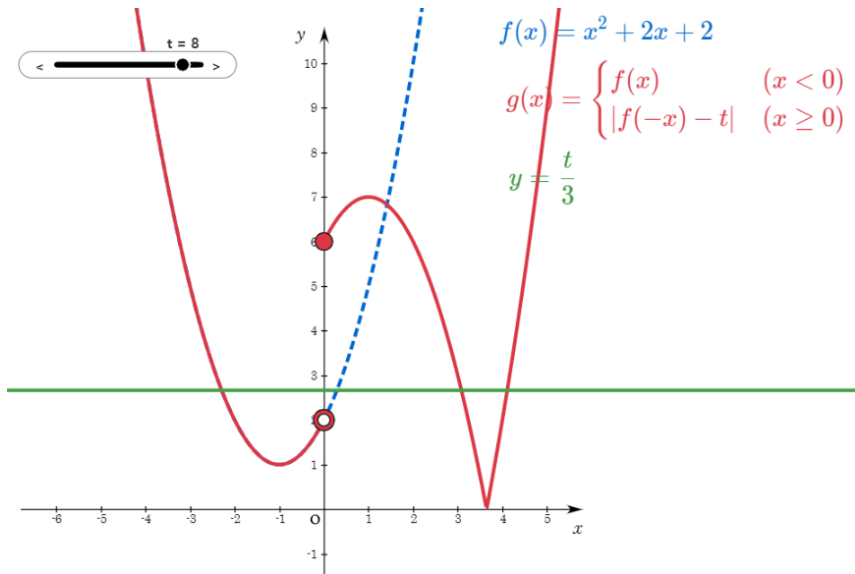


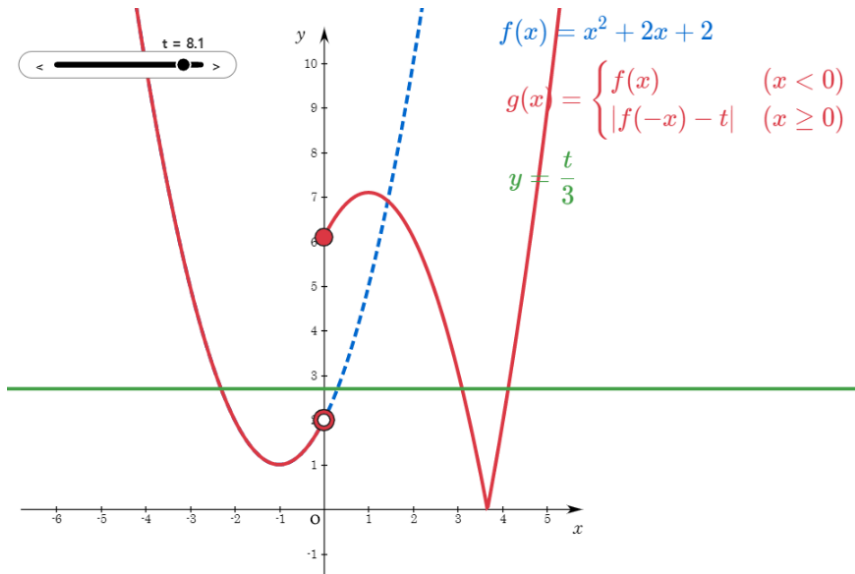


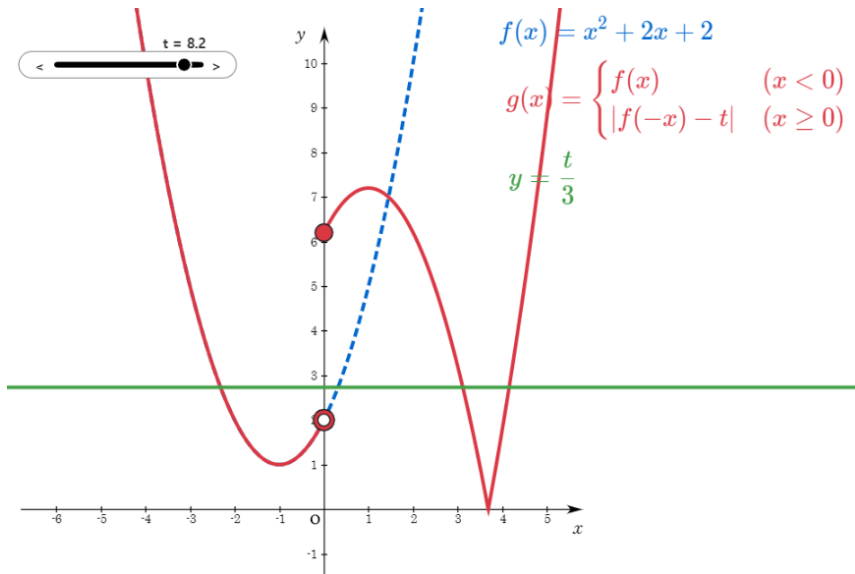


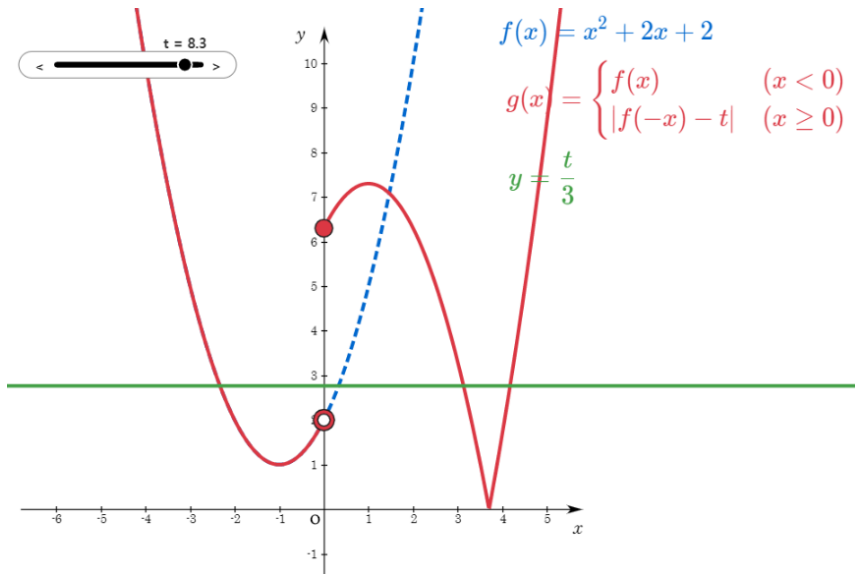


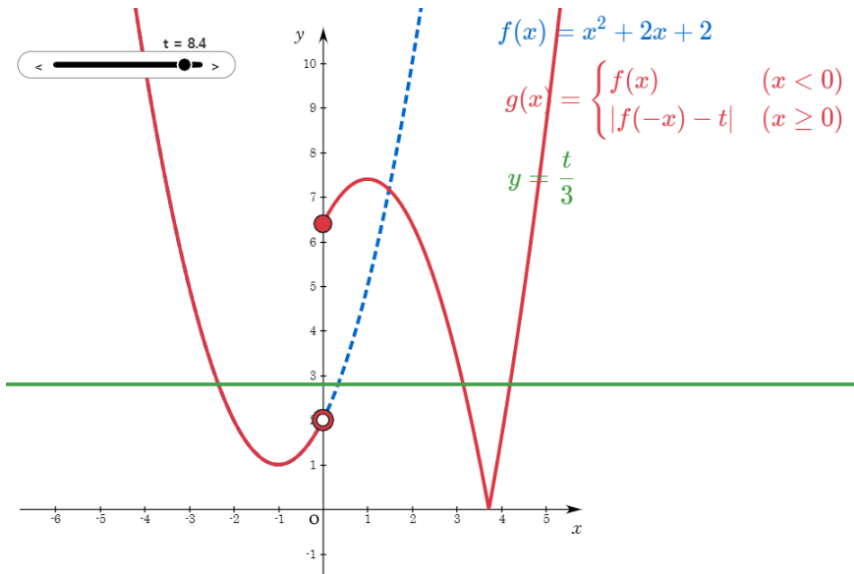




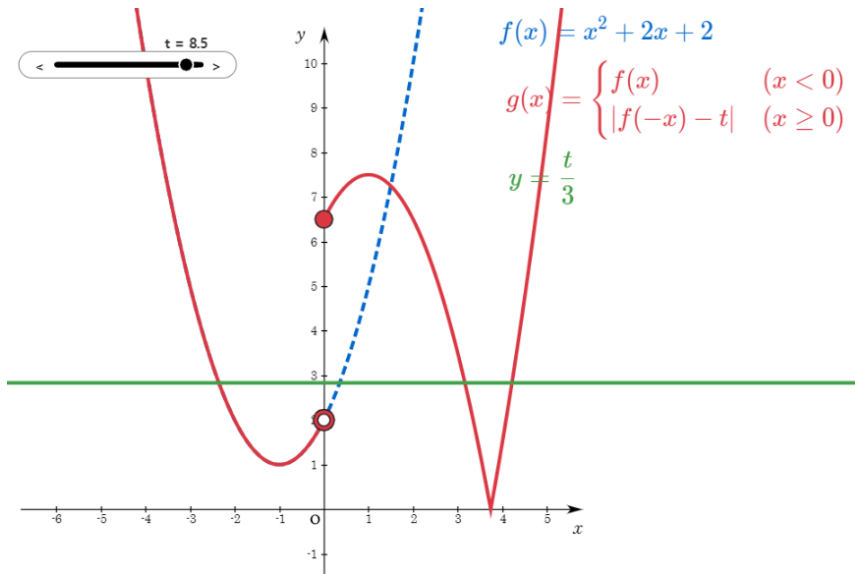


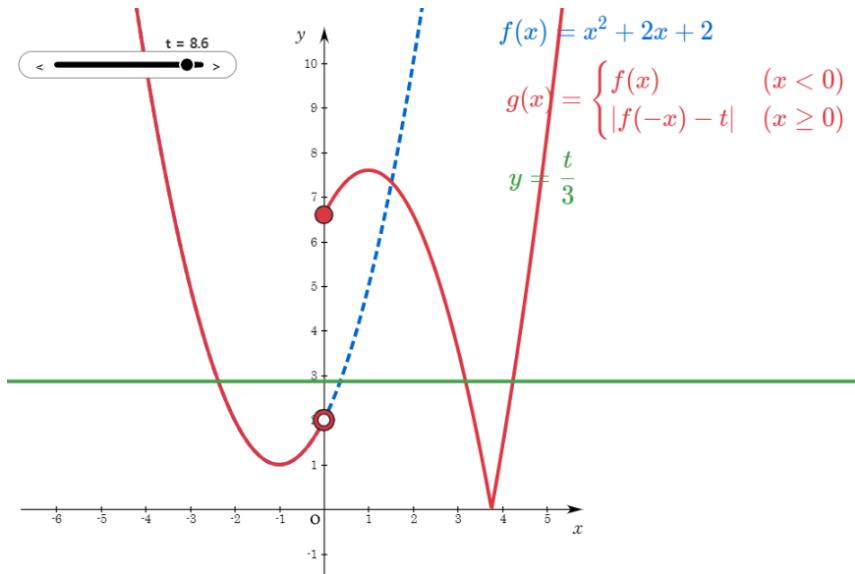


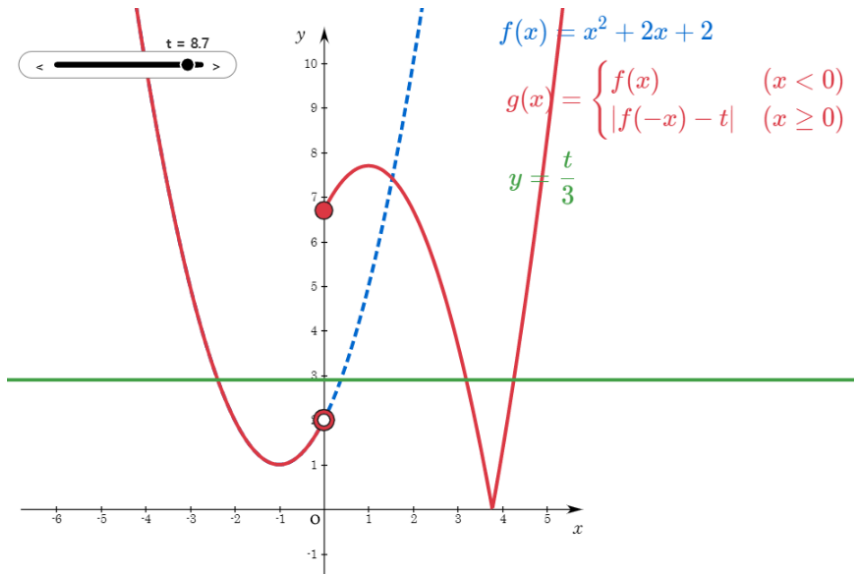


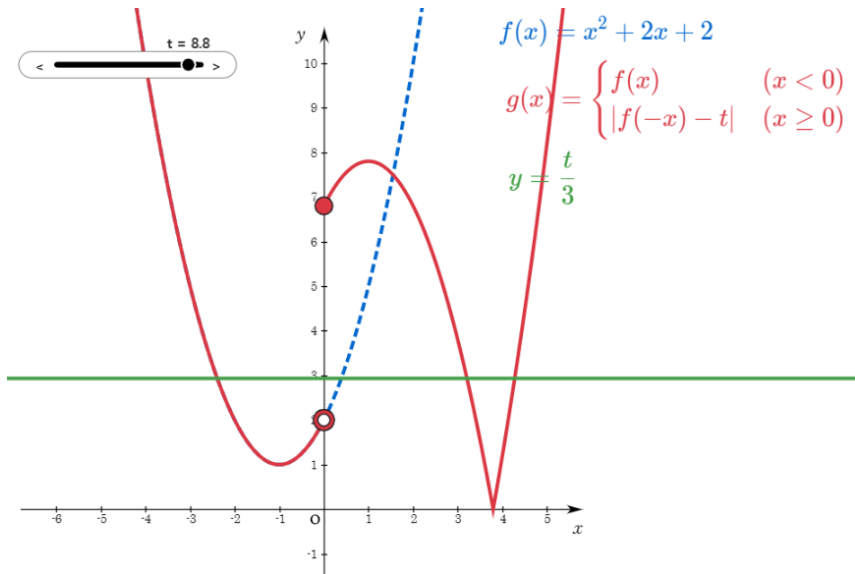


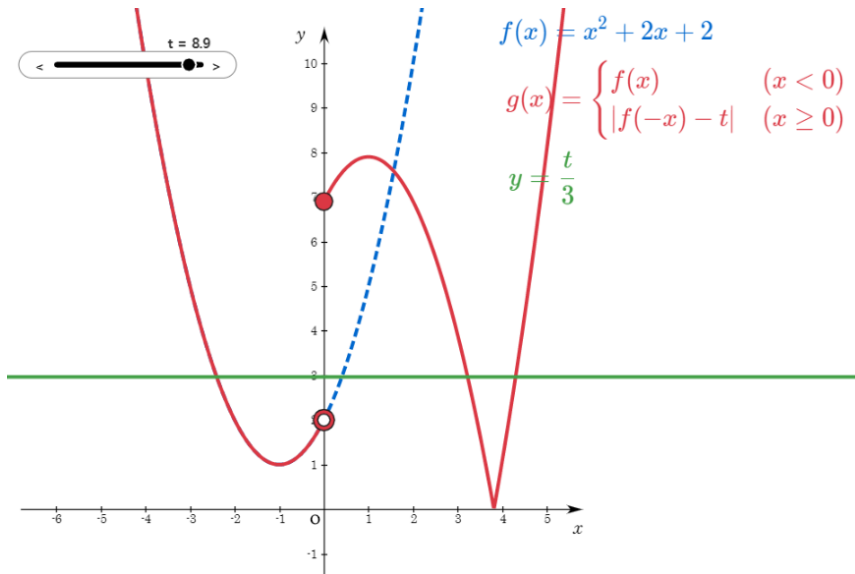


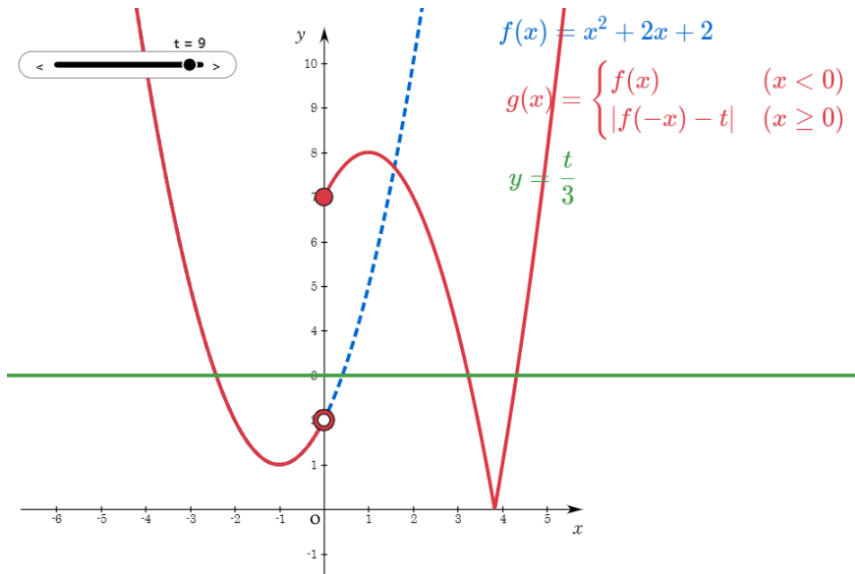












이차함수  $f(x) = x^2 + 2x + 2$ 와 실수  $t$ 에 대하여 함수  $g(x)$ 는

$$g(x) = \begin{cases} f(x) & (x < 0) \\ |f(-x) - t| & (x \geq 0) \end{cases}$$

이다. 함수  $y = g(x)$ 의 그래프와 직선  $y = \frac{t}{3}$ 가 만나는 서로 다른 모든 점의 개수를  $h(t)$ 라 하자.  $\lim_{t \rightarrow a^-} h(t) \neq \lim_{t \rightarrow a^+} h(t)$ 인 모든 실수  $\alpha$ 를 작은 수부터 크기순으로 나열한 것을  $a_1, a_2, \dots, a_m$  ( $m$ 은 자연수)라 할 때,  $\sum_{k=1}^m \{4a_k \times h(\alpha_k)\}$ 의 값을 구하시오.

Github:

<https://min7014.github.io/math20200918001.html>

Click or paste URL into the URL search bar, and you can see a picture moving.