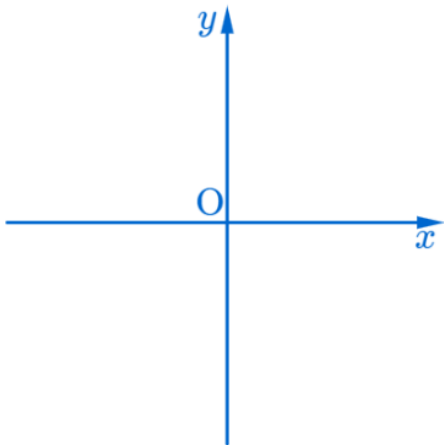


$$\lim_{x \rightarrow 0} f(x) = 0 \text{ of } y = f(x) = \begin{cases} x, & \text{if } x \neq 0 \\ 1, & \text{if } x = 0 \end{cases}$$

$$\lim_{x \rightarrow 0} f(x) = 0 \text{ of } y = f(x) = \begin{cases} x, & \text{if } x \neq 0 \\ 1, & \text{if } x = 0 \end{cases}$$

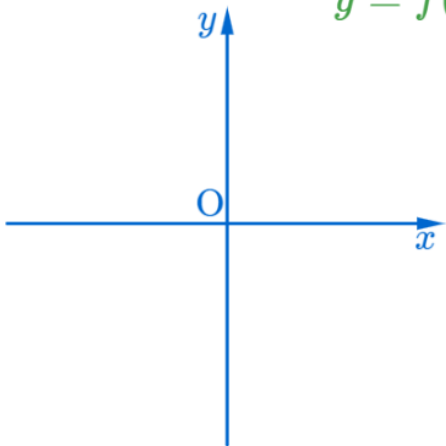
$$\lim_{x \rightarrow 0} f(x) = 0 \text{ of } y = f(x) = \begin{cases} x, & \text{if } x \neq 0 \\ 1, & \text{if } x = 0 \end{cases}$$

$$\lim_{x \rightarrow 0} f(x) = 0 \text{ of } y = f(x) = \begin{cases} x, & \text{if } x \neq 0 \\ 1, & \text{if } x = 0 \end{cases}$$

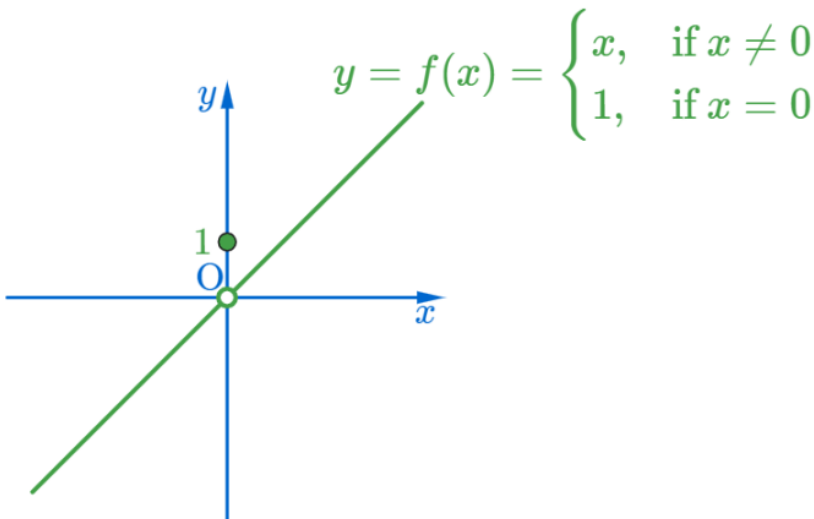


$$\lim_{x \rightarrow 0} f(x) = 0 \text{ of } y = f(x) = \begin{cases} x, & \text{if } x \neq 0 \\ 1, & \text{if } x = 0 \end{cases}$$

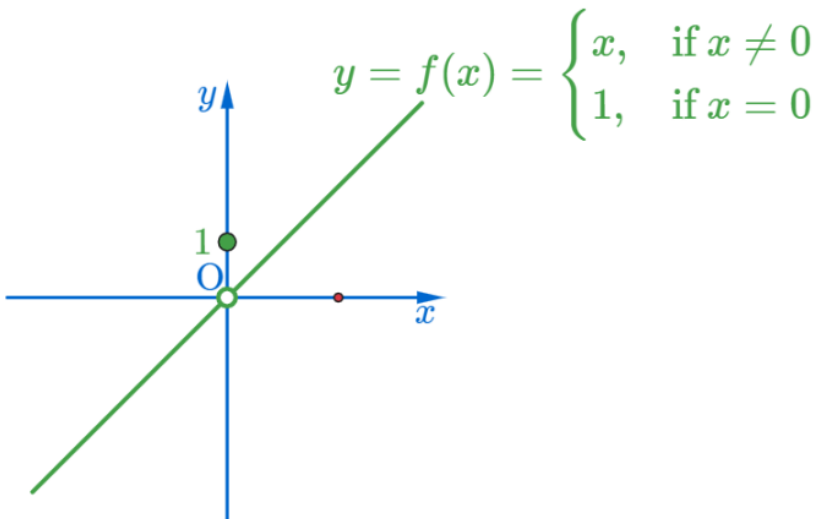
$$y = f(x) = \begin{cases} x, & \text{if } x \neq 0 \\ 1, & \text{if } x = 0 \end{cases}$$



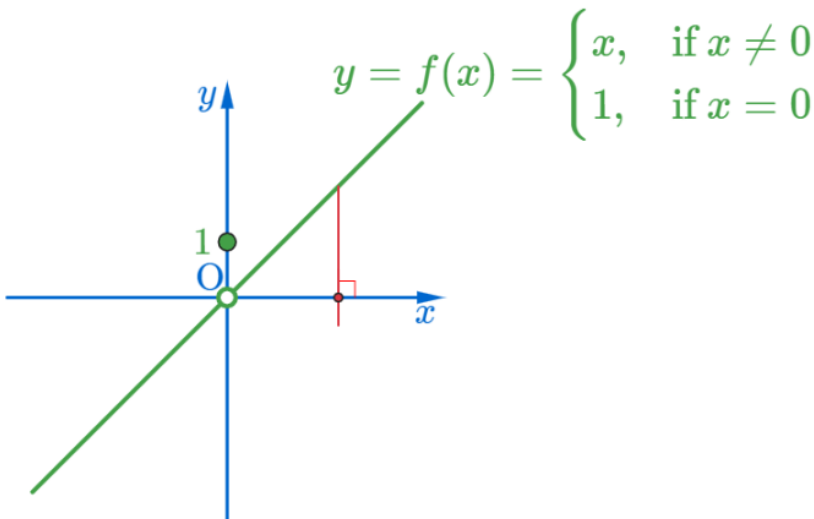
$$\lim_{x \rightarrow 0} f(x) = 0 \text{ of } y = f(x) = \begin{cases} x, & \text{if } x \neq 0 \\ 1, & \text{if } x = 0 \end{cases}$$



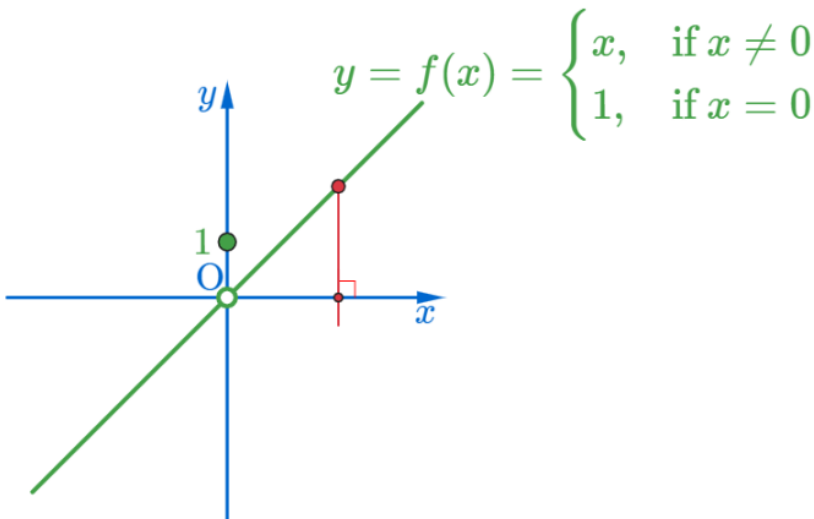
$$\lim_{x \rightarrow 0} f(x) = 0 \text{ of } y = f(x) = \begin{cases} x, & \text{if } x \neq 0 \\ 1, & \text{if } x = 0 \end{cases}$$



$$\lim_{x \rightarrow 0} f(x) = 0 \text{ of } y = f(x) = \begin{cases} x, & \text{if } x \neq 0 \\ 1, & \text{if } x = 0 \end{cases}$$

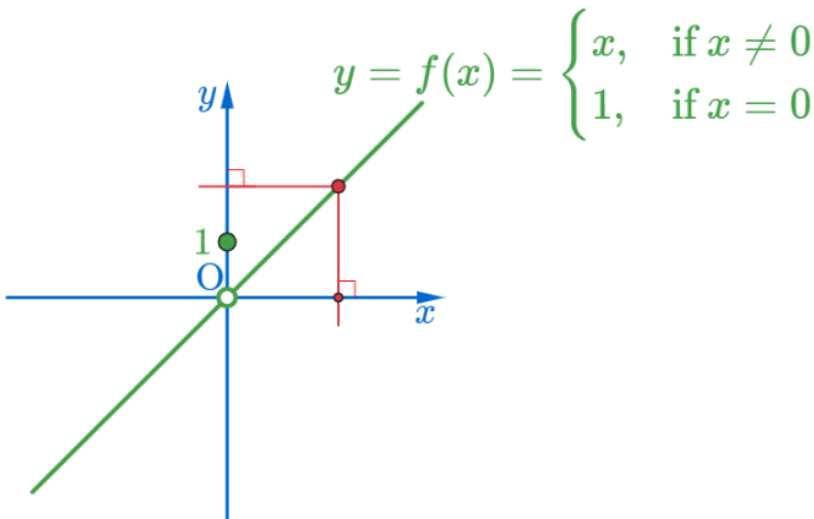


$$\lim_{x \rightarrow 0} f(x) = 0 \text{ of } y = f(x) = \begin{cases} x, & \text{if } x \neq 0 \\ 1, & \text{if } x = 0 \end{cases}$$

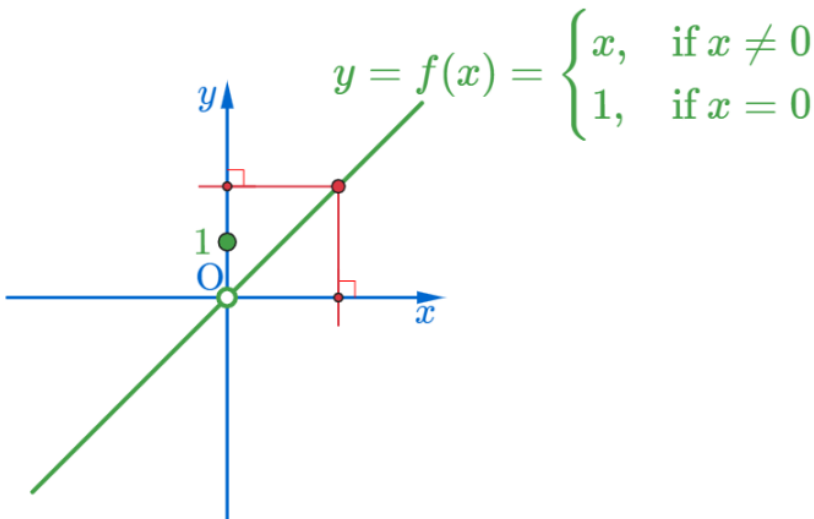




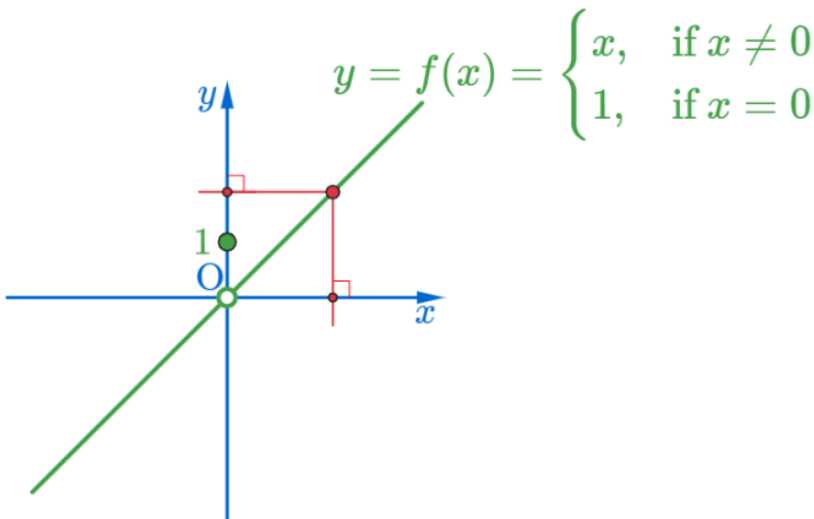
$$\lim_{x \rightarrow 0} f(x) = 0 \text{ of } y = f(x) = \begin{cases} x, & \text{if } x \neq 0 \\ 1, & \text{if } x = 0 \end{cases}$$



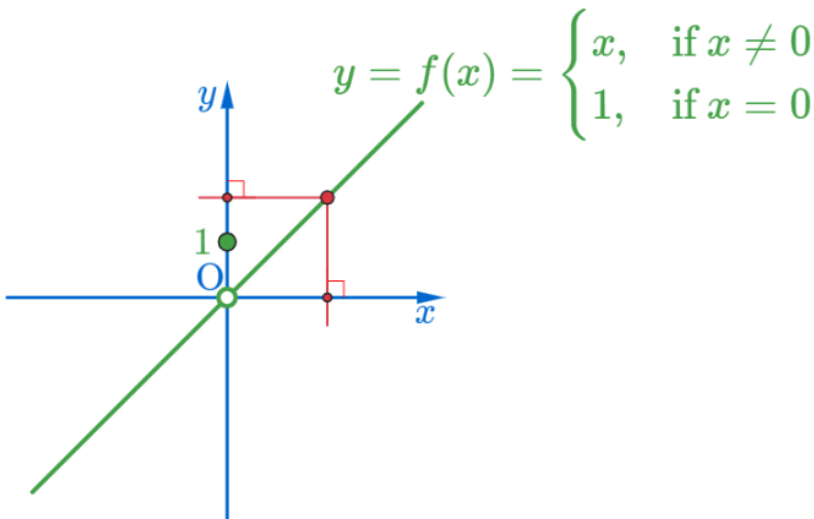
$$\lim_{x \rightarrow 0} f(x) = 0 \text{ of } y = f(x) = \begin{cases} x, & \text{if } x \neq 0 \\ 1, & \text{if } x = 0 \end{cases}$$



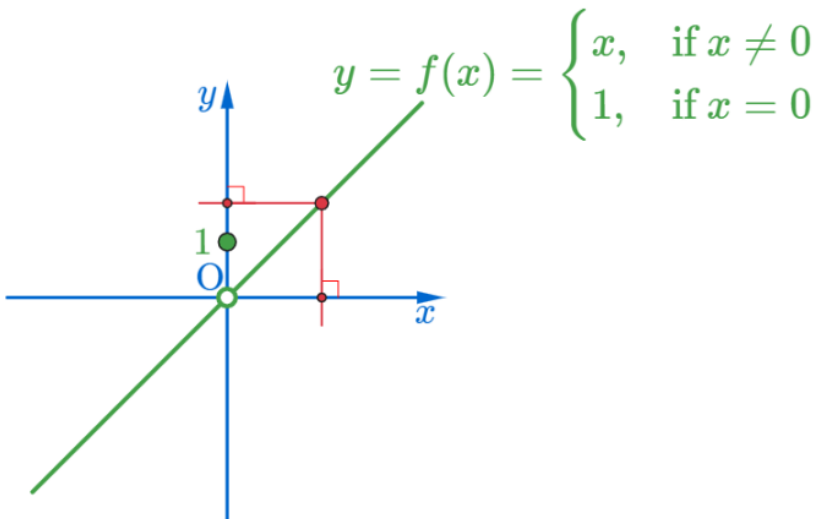
$$\lim_{x \rightarrow 0} f(x) = 0 \text{ of } y = f(x) = \begin{cases} x, & \text{if } x \neq 0 \\ 1, & \text{if } x = 0 \end{cases}$$



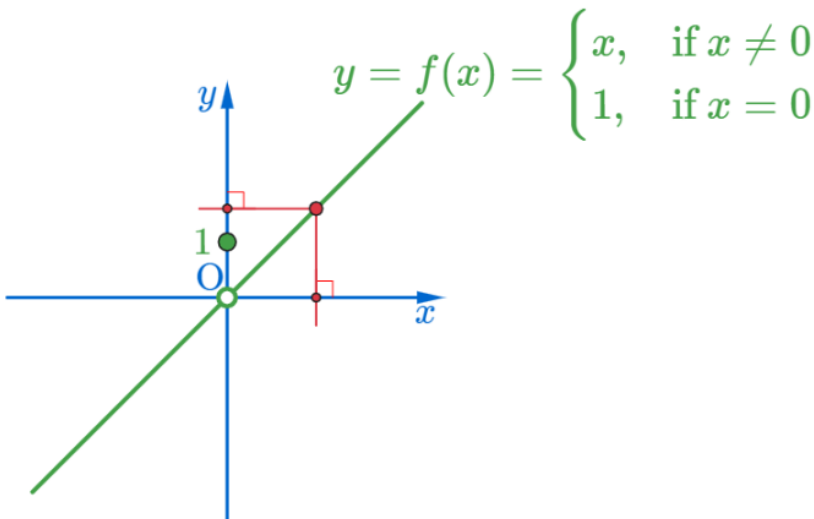
$$\lim_{x \rightarrow 0} f(x) = 0 \text{ of } y = f(x) = \begin{cases} x, & \text{if } x \neq 0 \\ 1, & \text{if } x = 0 \end{cases}$$



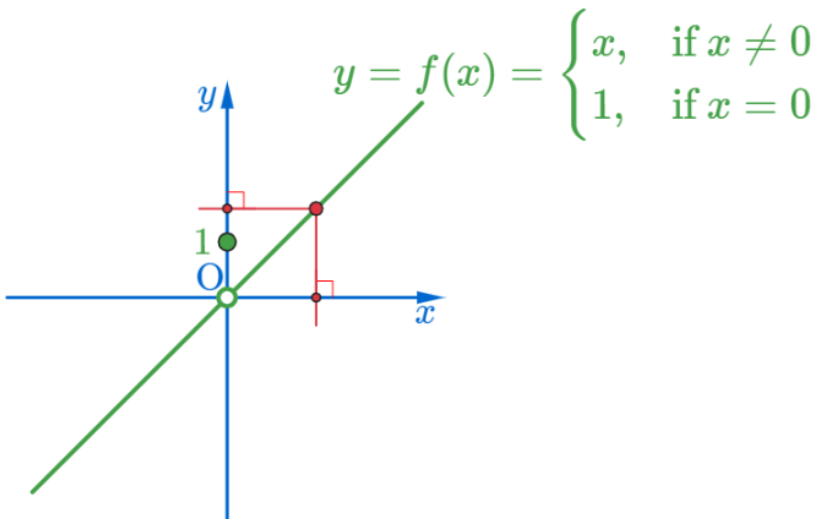
$$\lim_{x \rightarrow 0} f(x) = 0 \text{ of } y = f(x) = \begin{cases} x, & \text{if } x \neq 0 \\ 1, & \text{if } x = 0 \end{cases}$$



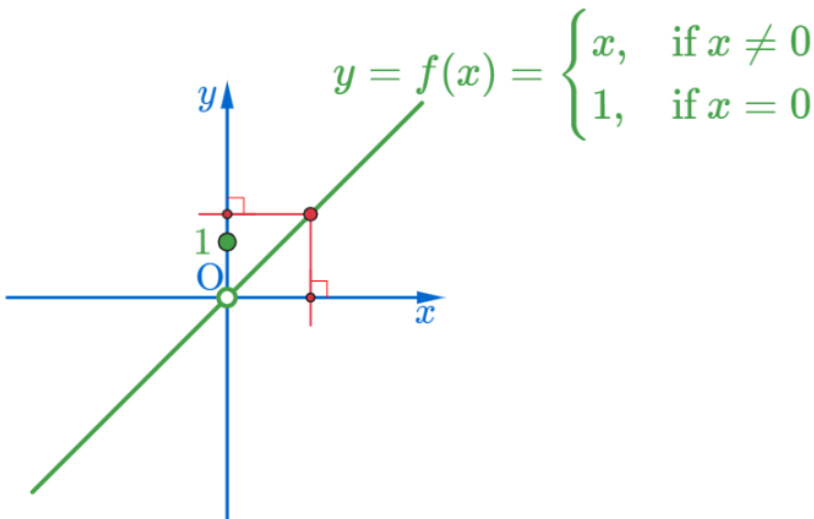
$$\lim_{x \rightarrow 0} f(x) = 0 \text{ of } y = f(x) = \begin{cases} x, & \text{if } x \neq 0 \\ 1, & \text{if } x = 0 \end{cases}$$



$$\lim_{x \rightarrow 0} f(x) = 0 \text{ of } y = f(x) = \begin{cases} x, & \text{if } x \neq 0 \\ 1, & \text{if } x = 0 \end{cases}$$

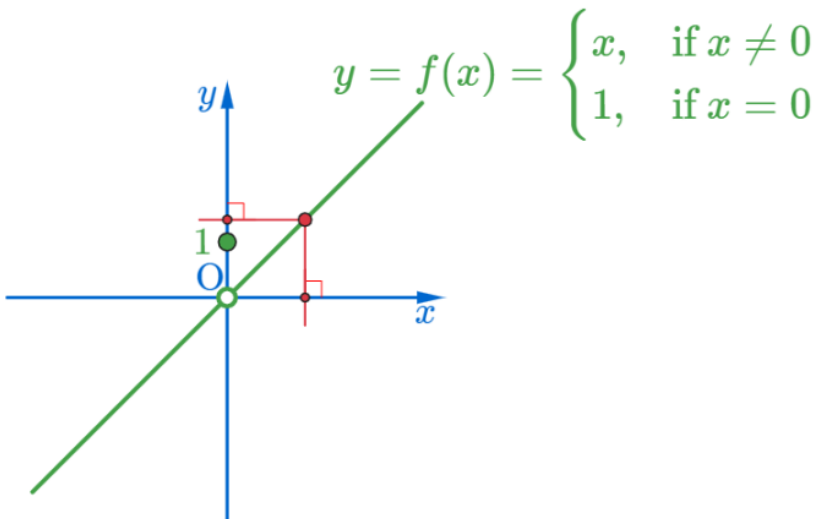


$$\lim_{x \rightarrow 0} f(x) = 0 \text{ of } y = f(x) = \begin{cases} x, & \text{if } x \neq 0 \\ 1, & \text{if } x = 0 \end{cases}$$

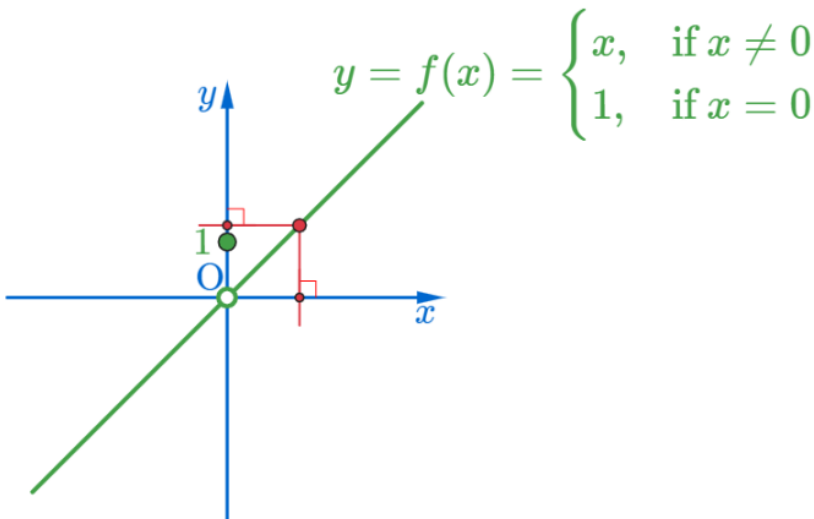




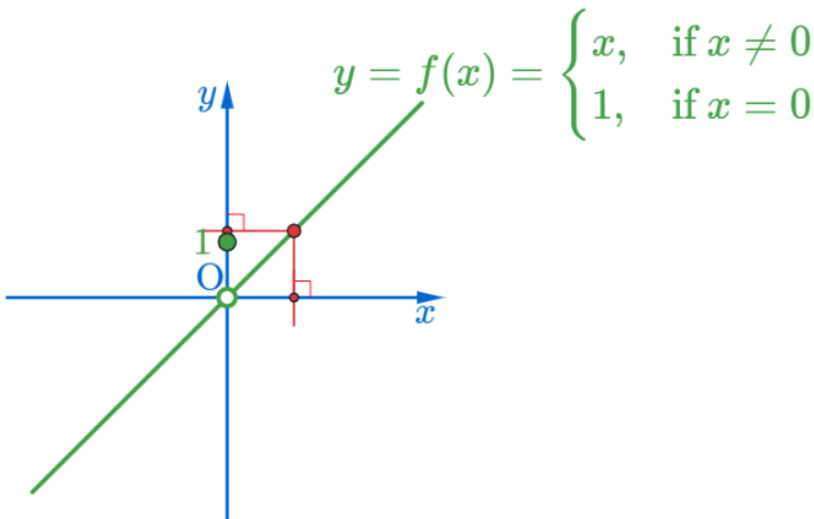
$$\lim_{x \rightarrow 0} f(x) = 0 \text{ of } y = f(x) = \begin{cases} x, & \text{if } x \neq 0 \\ 1, & \text{if } x = 0 \end{cases}$$



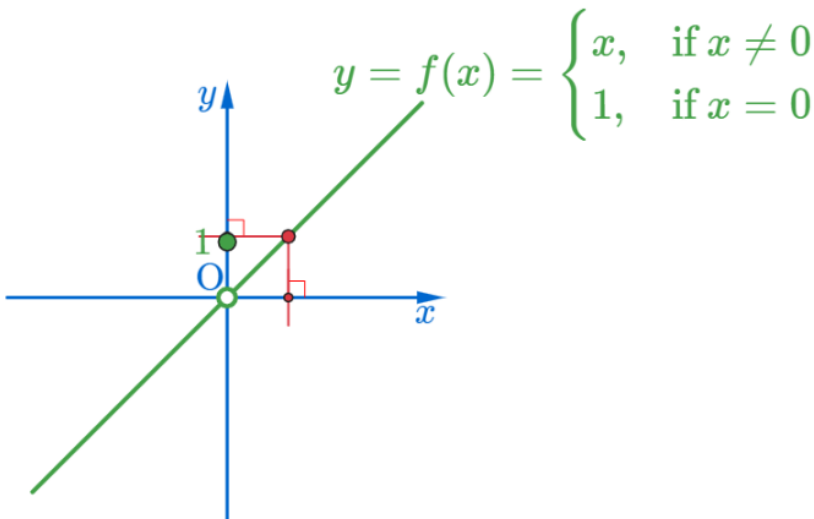
$$\lim_{x \rightarrow 0} f(x) = 0 \text{ of } y = f(x) = \begin{cases} x, & \text{if } x \neq 0 \\ 1, & \text{if } x = 0 \end{cases}$$



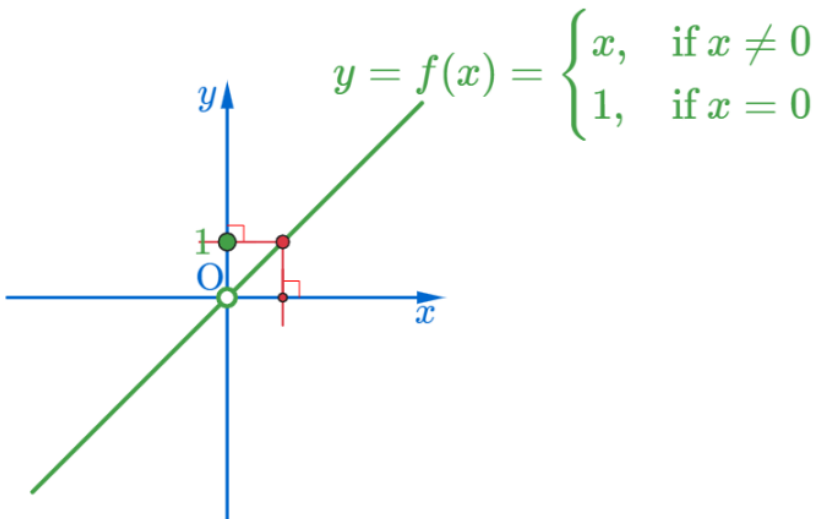
$$\lim_{x \rightarrow 0} f(x) = 0 \text{ of } y = f(x) = \begin{cases} x, & \text{if } x \neq 0 \\ 1, & \text{if } x = 0 \end{cases}$$



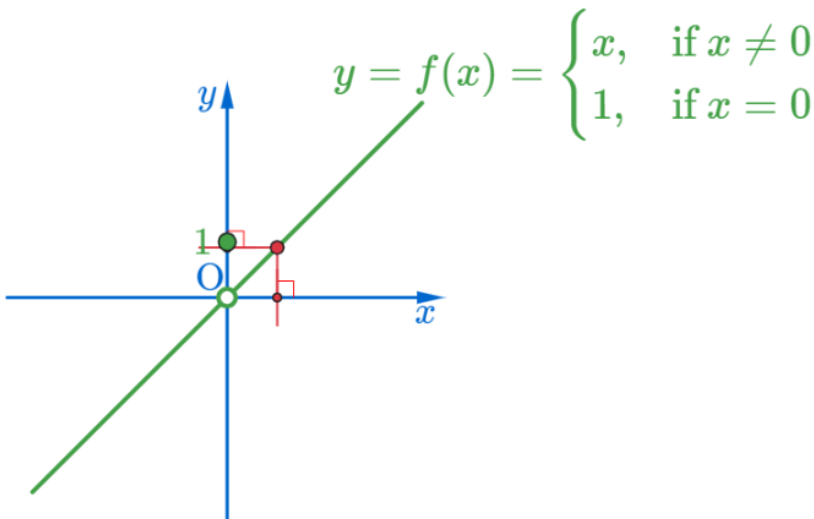
$$\lim_{x \rightarrow 0} f(x) = 0 \text{ of } y = f(x) = \begin{cases} x, & \text{if } x \neq 0 \\ 1, & \text{if } x = 0 \end{cases}$$



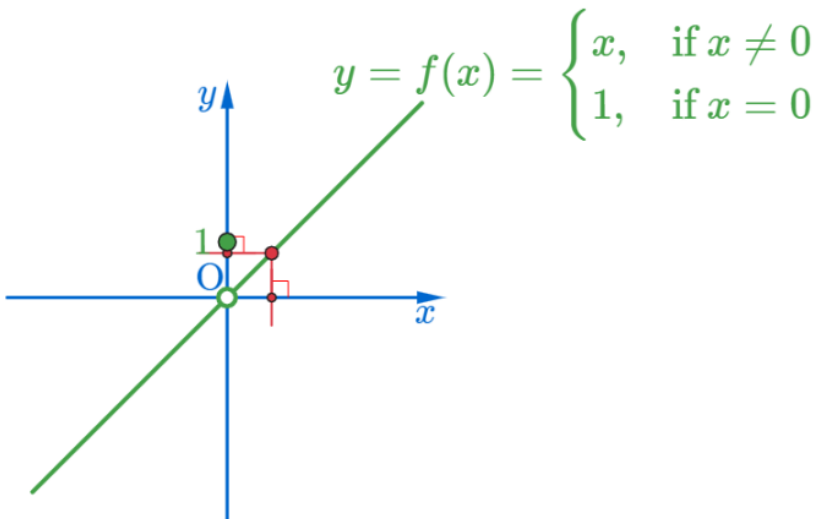
$$\lim_{x \rightarrow 0} f(x) = 0 \text{ of } y = f(x) = \begin{cases} x, & \text{if } x \neq 0 \\ 1, & \text{if } x = 0 \end{cases}$$



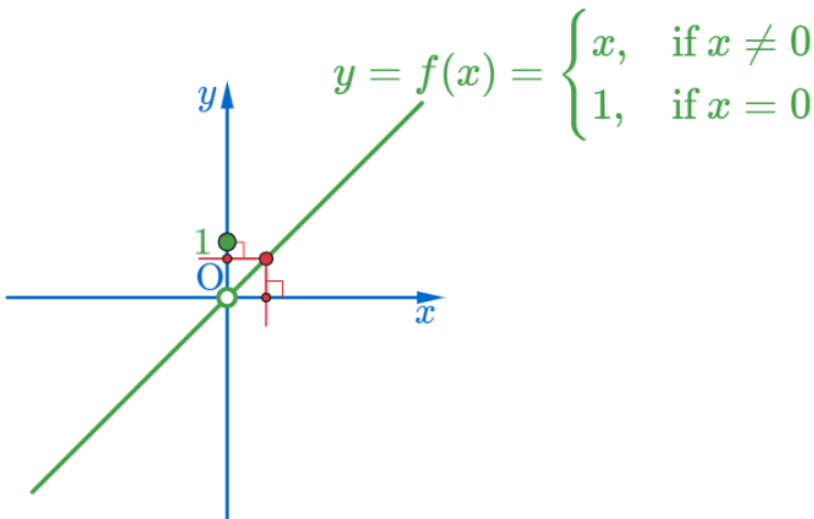
$$\lim_{x \rightarrow 0} f(x) = 0 \text{ of } y = f(x) = \begin{cases} x, & \text{if } x \neq 0 \\ 1, & \text{if } x = 0 \end{cases}$$



$$\lim_{x \rightarrow 0} f(x) = 0 \text{ of } y = f(x) = \begin{cases} x, & \text{if } x \neq 0 \\ 1, & \text{if } x = 0 \end{cases}$$

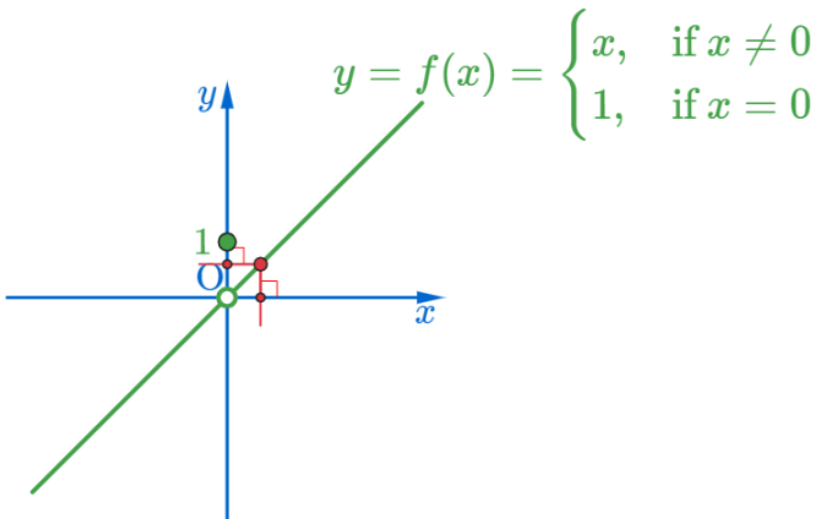


$$\lim_{x \rightarrow 0} f(x) = 0 \text{ of } y = f(x) = \begin{cases} x, & \text{if } x \neq 0 \\ 1, & \text{if } x = 0 \end{cases}$$

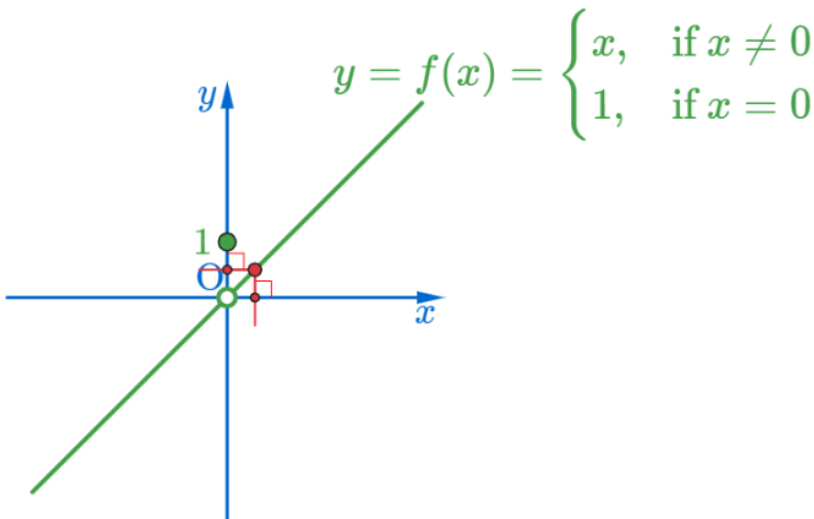




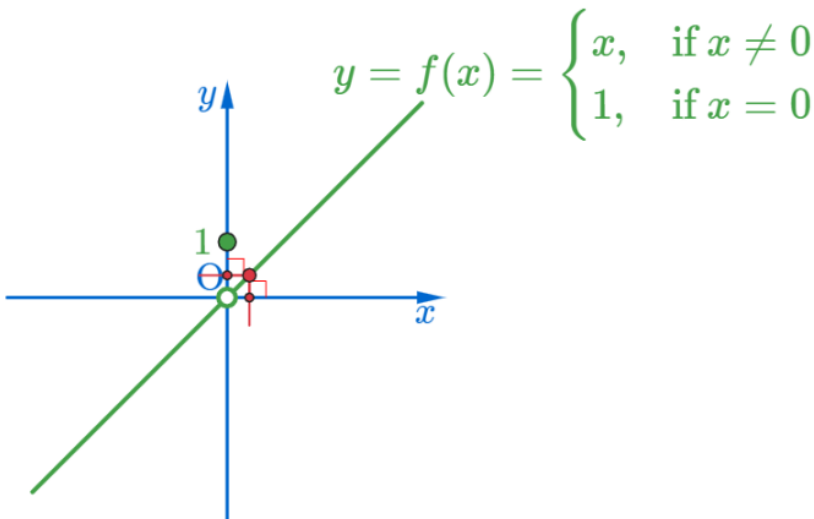
$$\lim_{x \rightarrow 0} f(x) = 0 \text{ of } y = f(x) = \begin{cases} x, & \text{if } x \neq 0 \\ 1, & \text{if } x = 0 \end{cases}$$



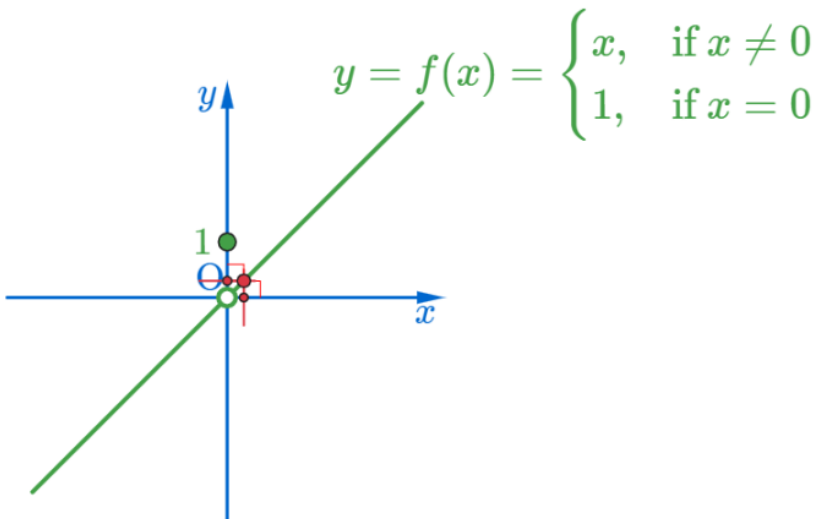
$$\lim_{x \rightarrow 0} f(x) = 0 \text{ of } y = f(x) = \begin{cases} x, & \text{if } x \neq 0 \\ 1, & \text{if } x = 0 \end{cases}$$



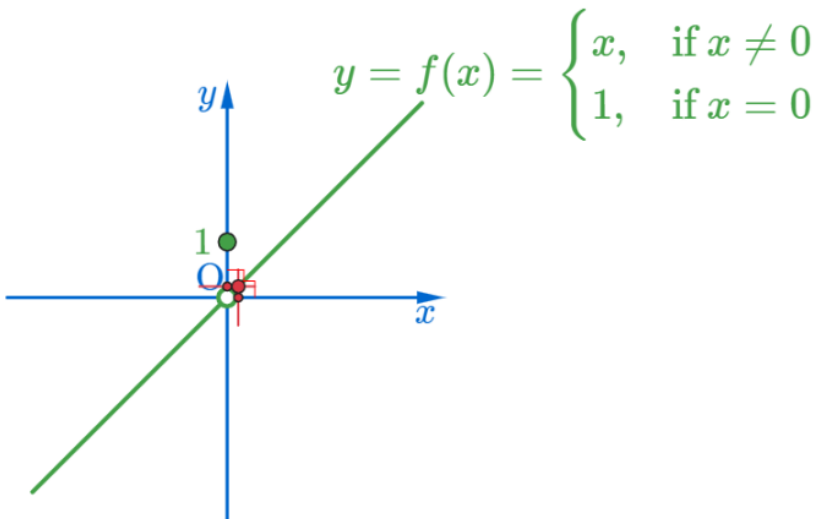
$$\lim_{x \rightarrow 0} f(x) = 0 \text{ of } y = f(x) = \begin{cases} x, & \text{if } x \neq 0 \\ 1, & \text{if } x = 0 \end{cases}$$



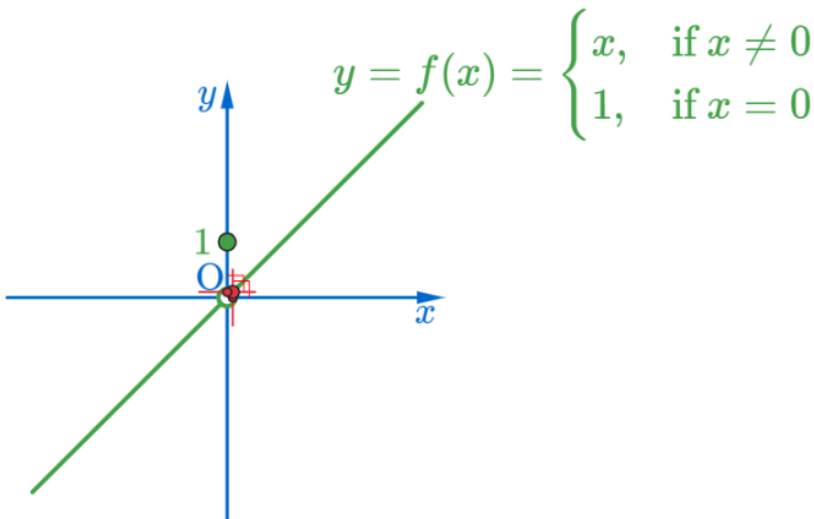
$$\lim_{x \rightarrow 0} f(x) = 0 \text{ of } y = f(x) = \begin{cases} x, & \text{if } x \neq 0 \\ 1, & \text{if } x = 0 \end{cases}$$



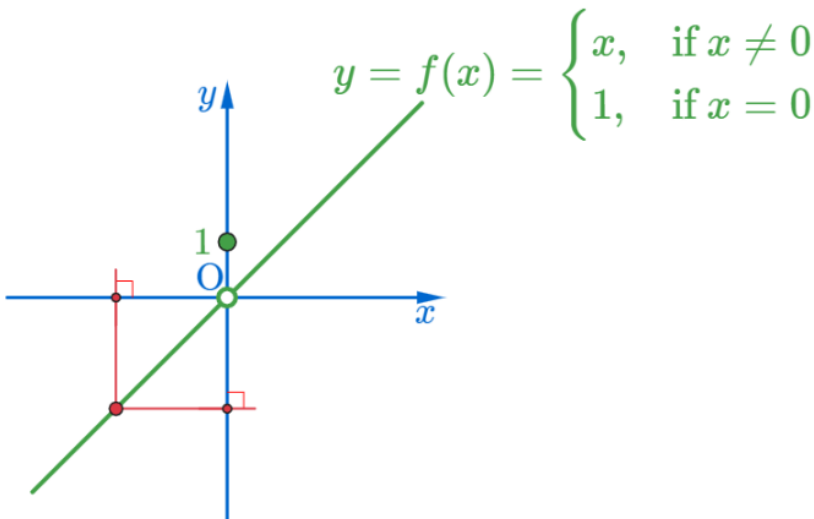
$$\lim_{x \rightarrow 0} f(x) = 0 \text{ of } y = f(x) = \begin{cases} x, & \text{if } x \neq 0 \\ 1, & \text{if } x = 0 \end{cases}$$



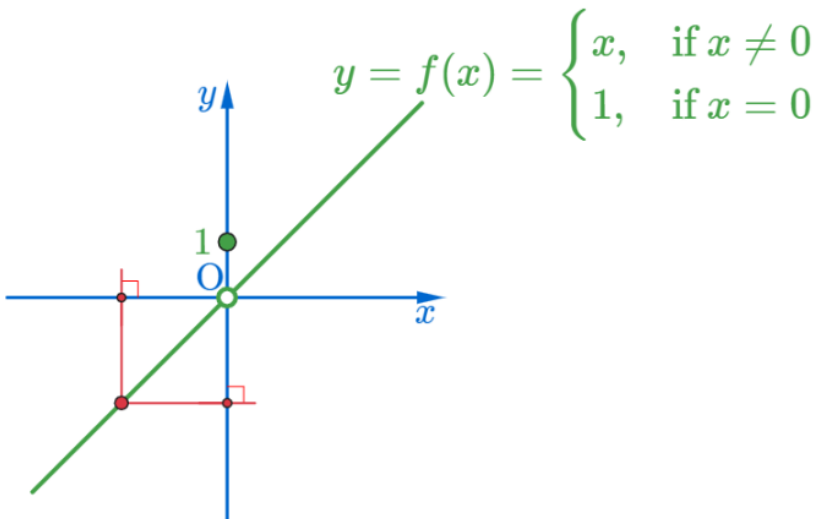
$$\lim_{x \rightarrow 0} f(x) = 0 \text{ of } y = f(x) = \begin{cases} x, & \text{if } x \neq 0 \\ 1, & \text{if } x = 0 \end{cases}$$



$$\lim_{x \rightarrow 0} f(x) = 0 \text{ of } y = f(x) = \begin{cases} x, & \text{if } x \neq 0 \\ 1, & \text{if } x = 0 \end{cases}$$

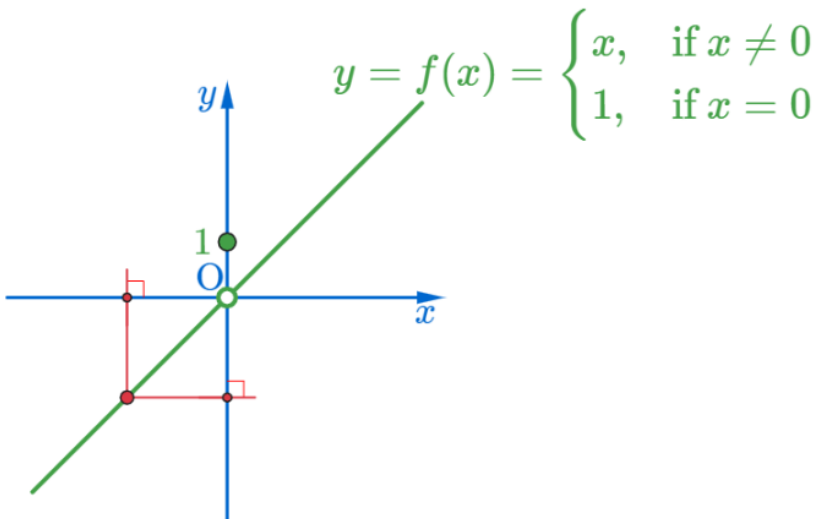


$$\lim_{x \rightarrow 0} f(x) = 0 \text{ of } y = f(x) = \begin{cases} x, & \text{if } x \neq 0 \\ 1, & \text{if } x = 0 \end{cases}$$

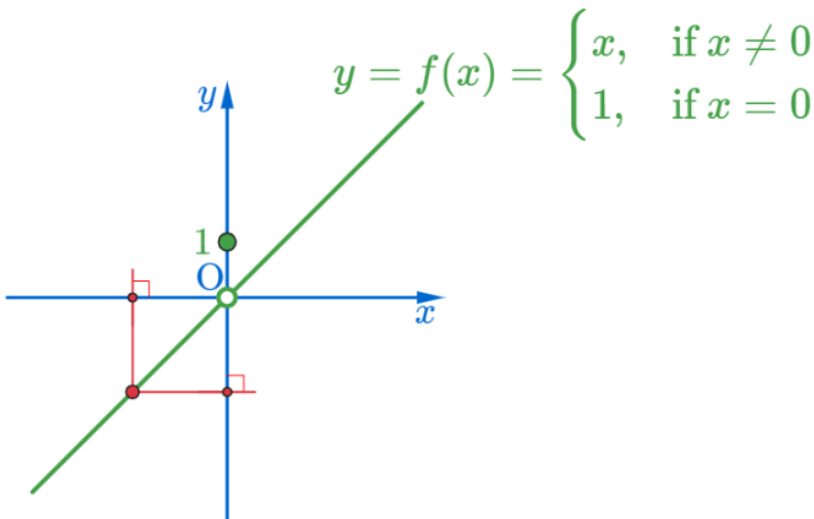




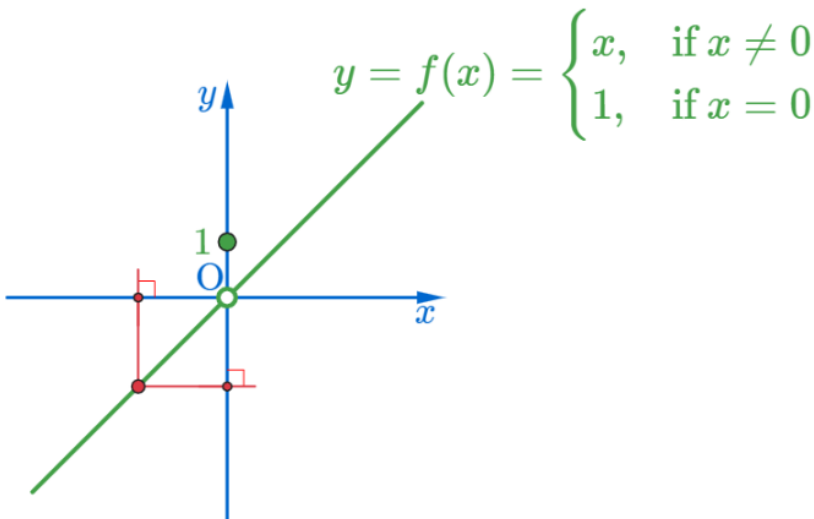
$$\lim_{x \rightarrow 0} f(x) = 0 \text{ of } y = f(x) = \begin{cases} x, & \text{if } x \neq 0 \\ 1, & \text{if } x = 0 \end{cases}$$



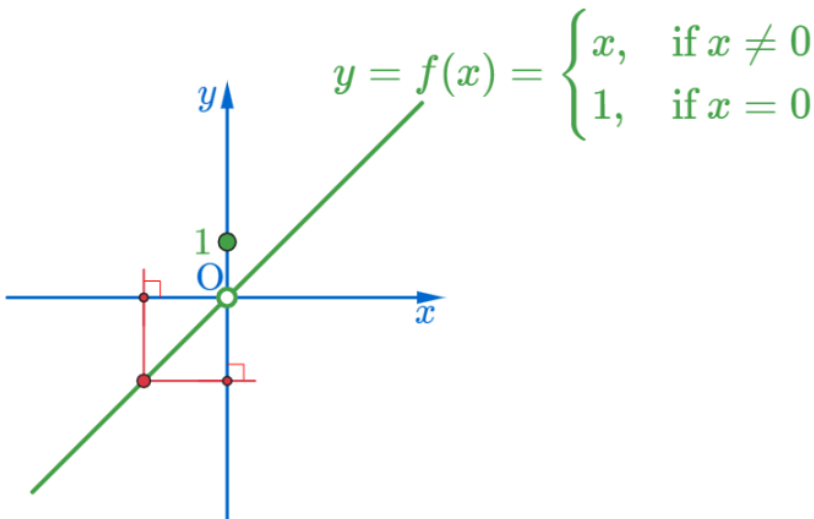
$$\lim_{x \rightarrow 0} f(x) = 0 \text{ of } y = f(x) = \begin{cases} x, & \text{if } x \neq 0 \\ 1, & \text{if } x = 0 \end{cases}$$



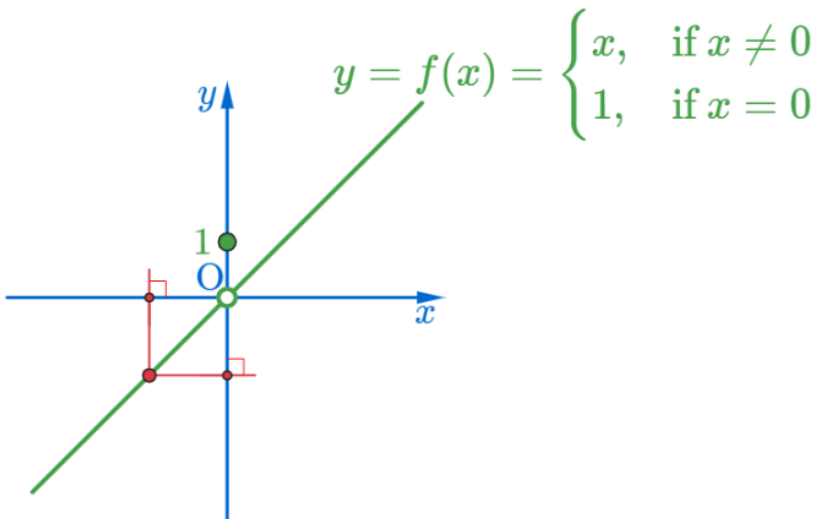
$$\lim_{x \rightarrow 0} f(x) = 0 \text{ of } y = f(x) = \begin{cases} x, & \text{if } x \neq 0 \\ 1, & \text{if } x = 0 \end{cases}$$



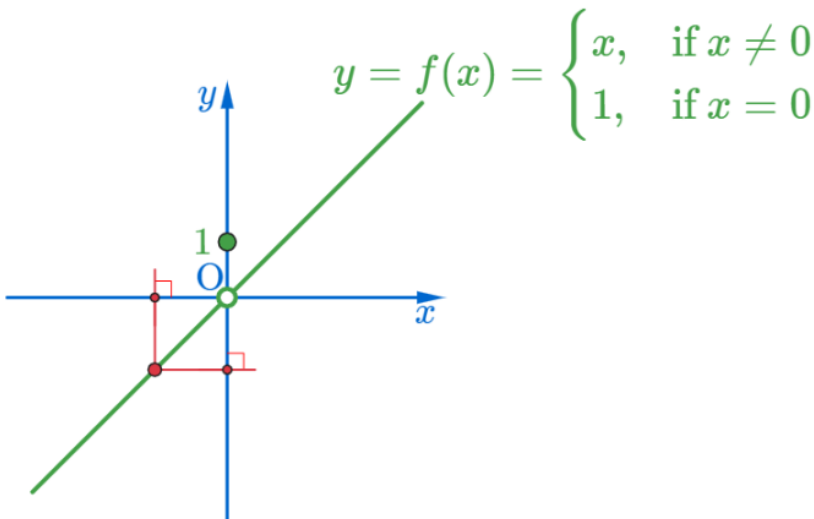
$$\lim_{x \rightarrow 0} f(x) = 0 \text{ of } y = f(x) = \begin{cases} x, & \text{if } x \neq 0 \\ 1, & \text{if } x = 0 \end{cases}$$



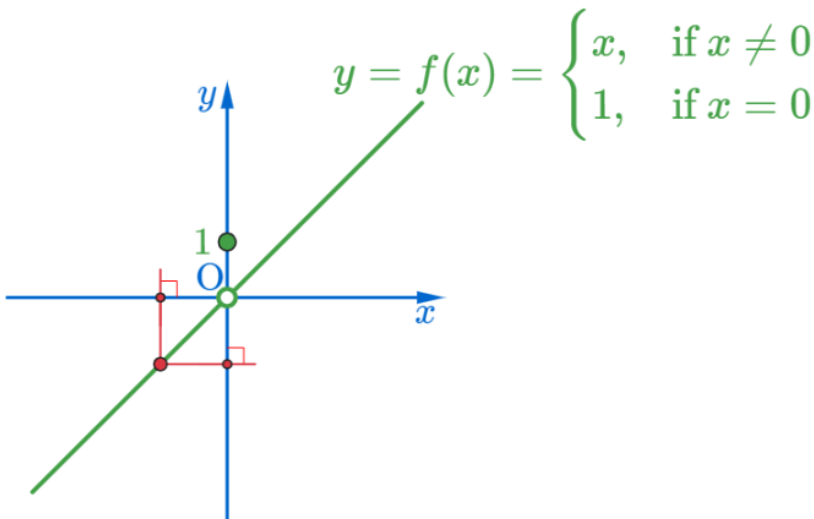
$$\lim_{x \rightarrow 0} f(x) = 0 \text{ of } y = f(x) = \begin{cases} x, & \text{if } x \neq 0 \\ 1, & \text{if } x = 0 \end{cases}$$



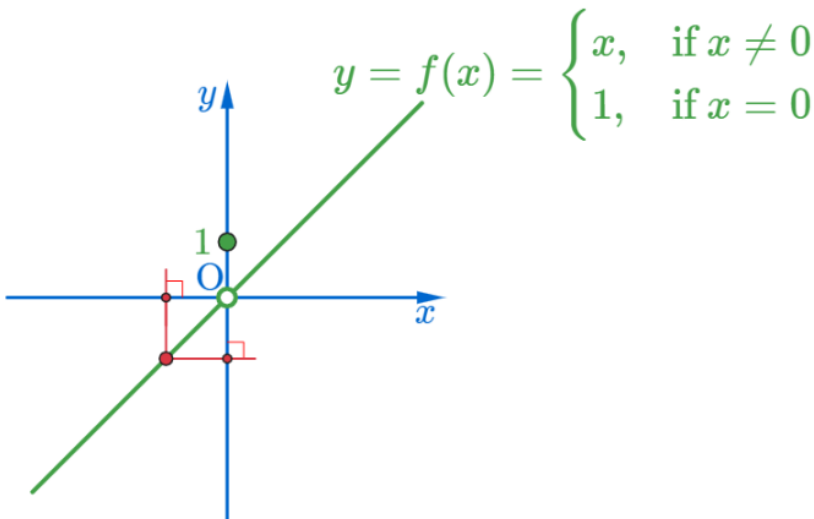
$$\lim_{x \rightarrow 0} f(x) = 0 \text{ of } y = f(x) = \begin{cases} x, & \text{if } x \neq 0 \\ 1, & \text{if } x = 0 \end{cases}$$



$$\lim_{x \rightarrow 0} f(x) = 0 \text{ of } y = f(x) = \begin{cases} x, & \text{if } x \neq 0 \\ 1, & \text{if } x = 0 \end{cases}$$

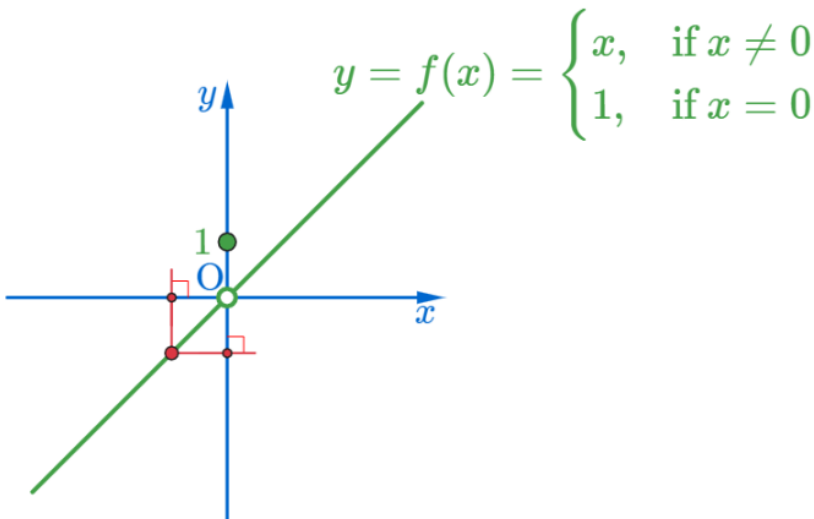


$$\lim_{x \rightarrow 0} f(x) = 0 \text{ of } y = f(x) = \begin{cases} x, & \text{if } x \neq 0 \\ 1, & \text{if } x = 0 \end{cases}$$

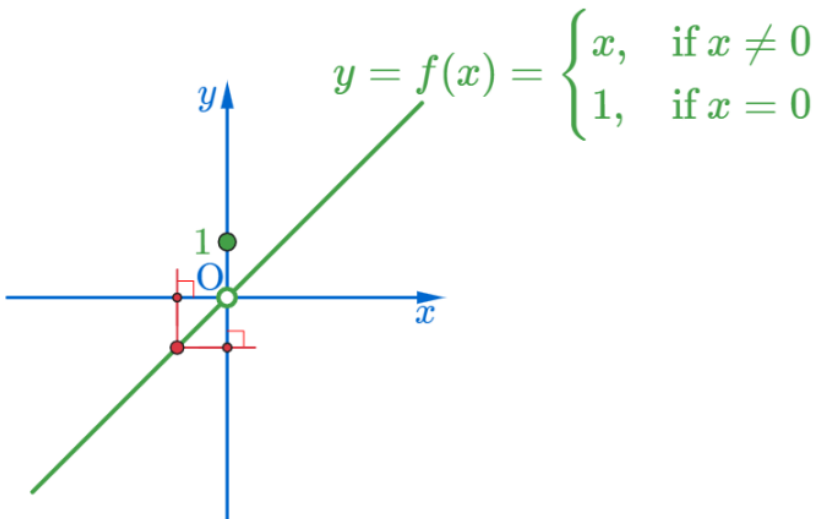




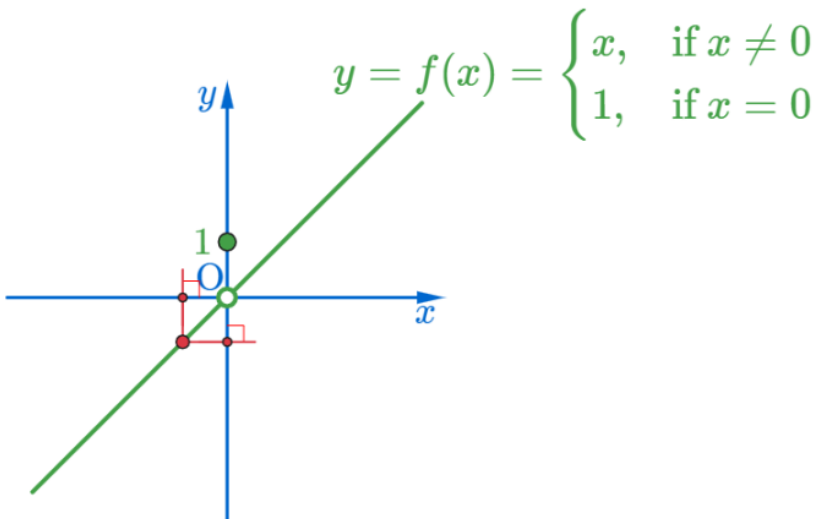
$$\lim_{x \rightarrow 0} f(x) = 0 \text{ of } y = f(x) = \begin{cases} x, & \text{if } x \neq 0 \\ 1, & \text{if } x = 0 \end{cases}$$



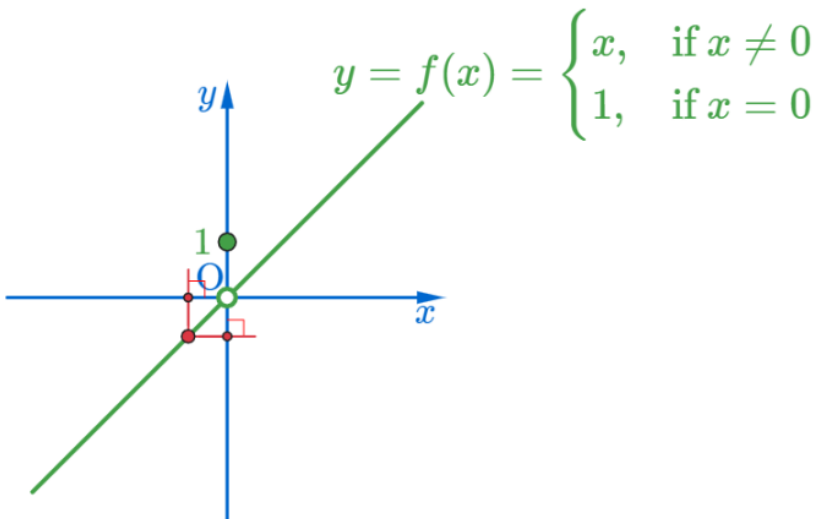
$$\lim_{x \rightarrow 0} f(x) = 0 \text{ of } y = f(x) = \begin{cases} x, & \text{if } x \neq 0 \\ 1, & \text{if } x = 0 \end{cases}$$



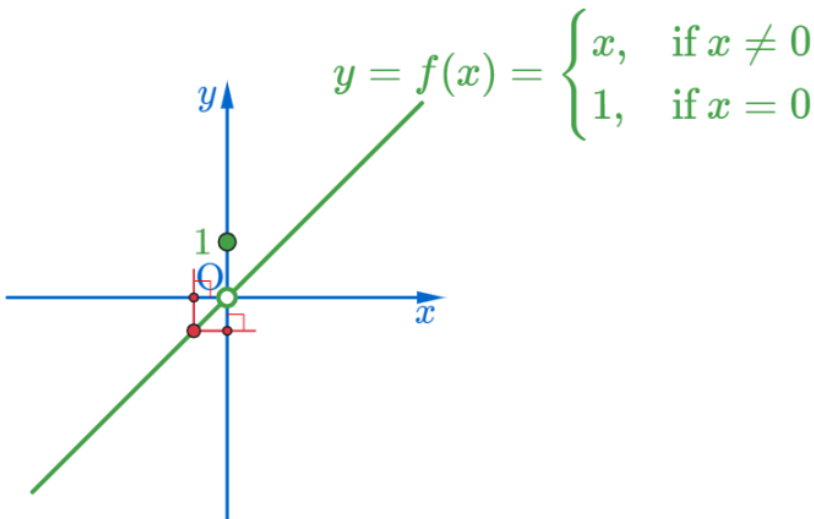
$$\lim_{x \rightarrow 0} f(x) = 0 \text{ of } y = f(x) = \begin{cases} x, & \text{if } x \neq 0 \\ 1, & \text{if } x = 0 \end{cases}$$



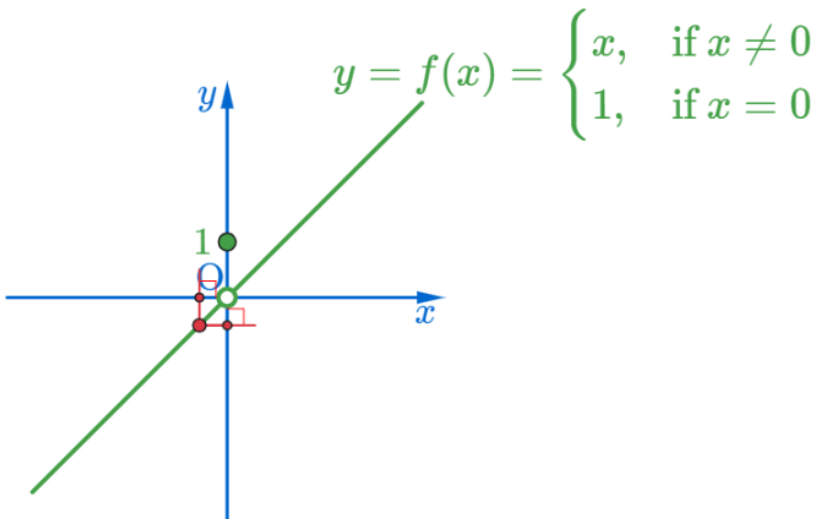
$$\lim_{x \rightarrow 0} f(x) = 0 \text{ of } y = f(x) = \begin{cases} x, & \text{if } x \neq 0 \\ 1, & \text{if } x = 0 \end{cases}$$



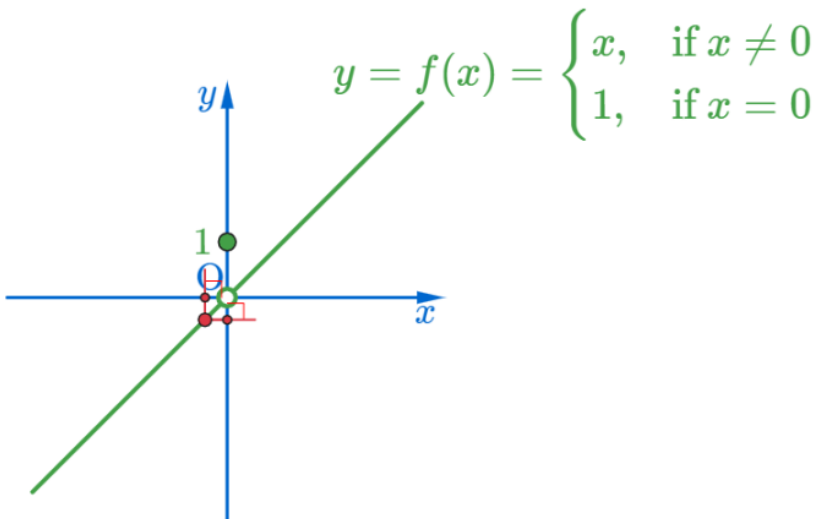
$$\lim_{x \rightarrow 0} f(x) = 0 \text{ of } y = f(x) = \begin{cases} x, & \text{if } x \neq 0 \\ 1, & \text{if } x = 0 \end{cases}$$



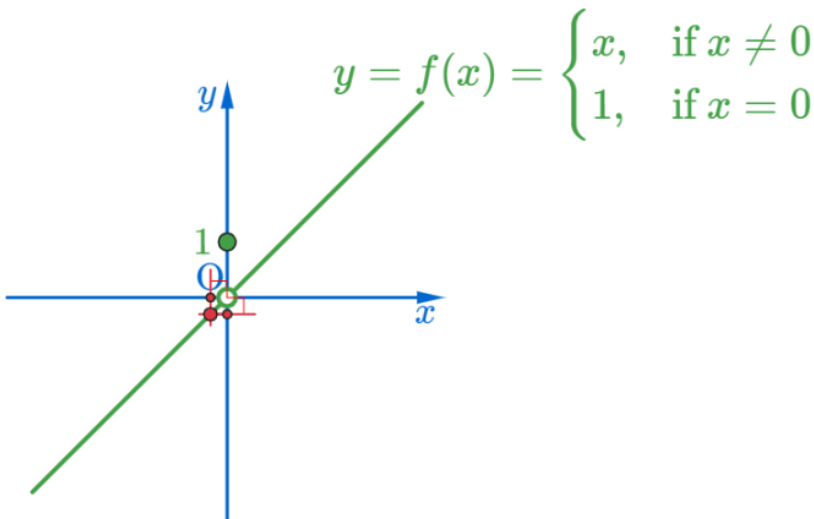
$$\lim_{x \rightarrow 0} f(x) = 0 \text{ of } y = f(x) = \begin{cases} x, & \text{if } x \neq 0 \\ 1, & \text{if } x = 0 \end{cases}$$



$$\lim_{x \rightarrow 0} f(x) = 0 \text{ of } y = f(x) = \begin{cases} x, & \text{if } x \neq 0 \\ 1, & \text{if } x = 0 \end{cases}$$

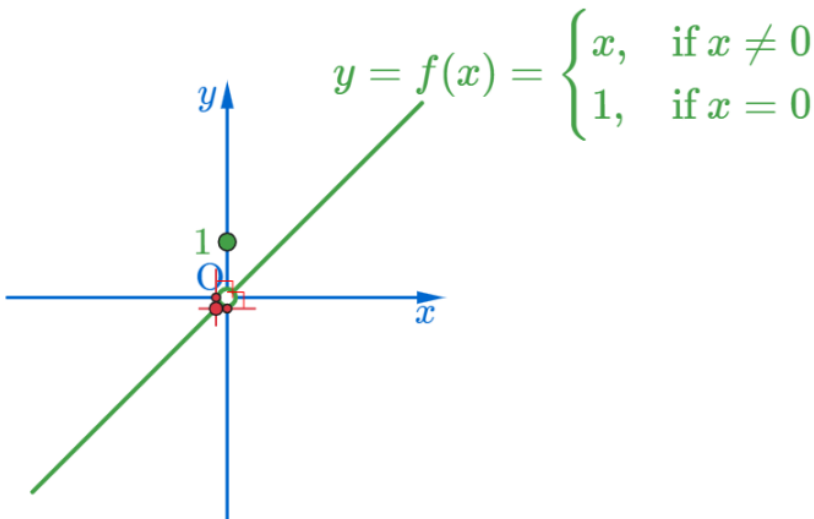


$$\lim_{x \rightarrow 0} f(x) = 0 \text{ of } y = f(x) = \begin{cases} x, & \text{if } x \neq 0 \\ 1, & \text{if } x = 0 \end{cases}$$

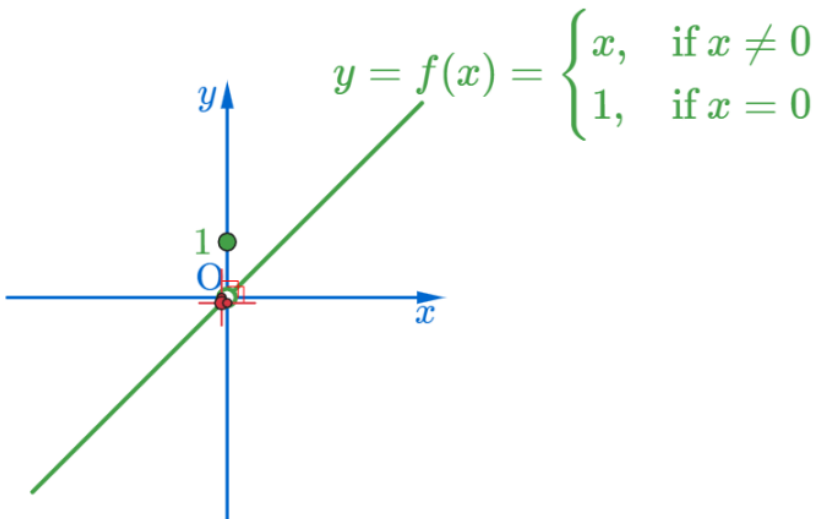




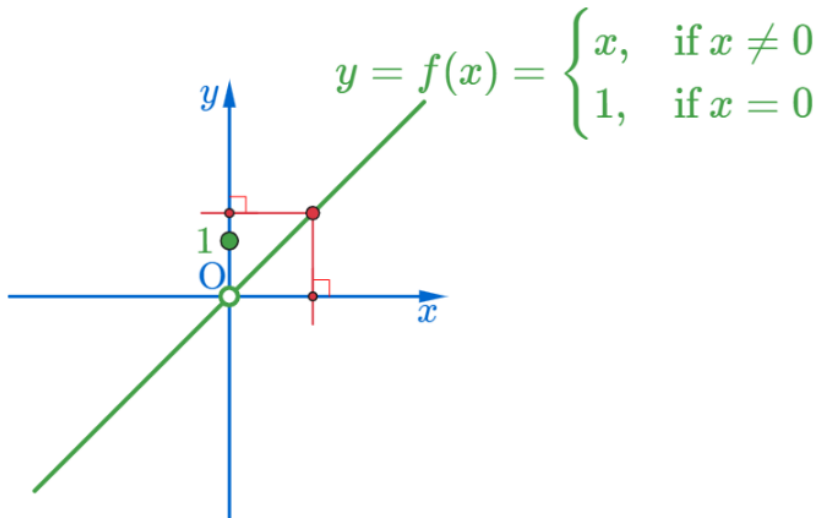
$$\lim_{x \rightarrow 0} f(x) = 0 \text{ of } y = f(x) = \begin{cases} x, & \text{if } x \neq 0 \\ 1, & \text{if } x = 0 \end{cases}$$



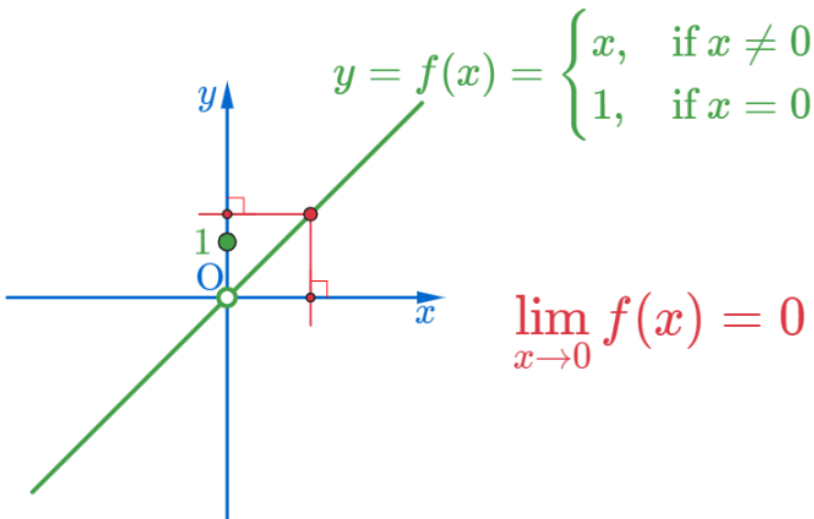
$$\lim_{x \rightarrow 0} f(x) = 0 \text{ of } y = f(x) = \begin{cases} x, & \text{if } x \neq 0 \\ 1, & \text{if } x = 0 \end{cases}$$



$$\lim_{x \rightarrow 0} f(x) = 0 \text{ of } y = f(x) = \begin{cases} x, & \text{if } x \neq 0 \\ 1, & \text{if } x = 0 \end{cases}$$



$$\lim_{x \rightarrow 0} f(x) = 0 \text{ of } y = f(x) = \begin{cases} x, & \text{if } x \neq 0 \\ 1, & \text{if } x = 0 \end{cases}$$



$$\lim_{x \rightarrow 0} f(x) = 0 \text{ of } y = f(x) = \begin{cases} x, & \text{if } x \neq 0 \\ 1, & \text{if } x = 0 \end{cases}$$

Github:

<https://min7014.github.io/math20200829002.html>

Click or paste URL into the URL search bar, and you can see a picture moving.