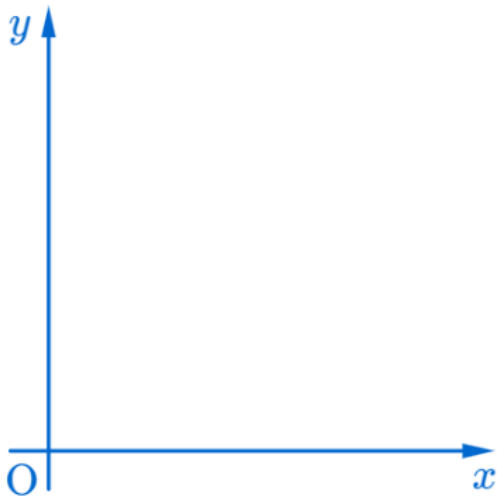


$$\lim_{x \rightarrow a} f(x) = \alpha \text{ of } y = f(x) \quad (x \neq a)$$

$$\lim_{x \rightarrow a} f(x) = \alpha \text{ of } y = f(x) \quad (x \neq a)$$

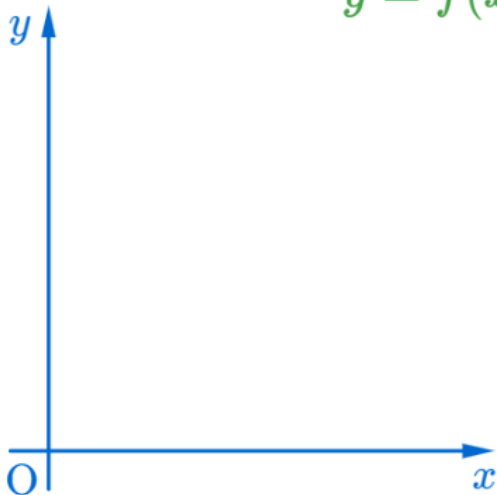
$$\lim_{x \rightarrow a} f(x) = \alpha \text{ of } y = f(x) \quad (x \neq a)$$

$$\lim_{x \rightarrow a} f(x) = \alpha \text{ of } y = f(x) \ (x \neq a)$$

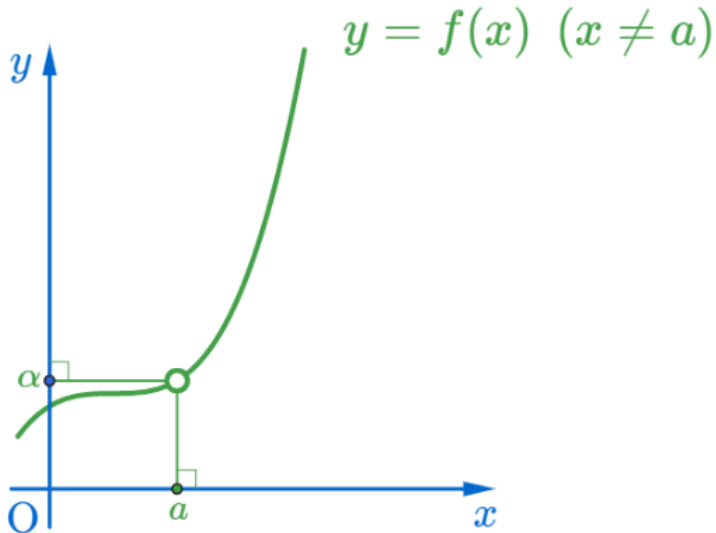


$$\lim_{x \rightarrow a} f(x) = \alpha \text{ of } y = f(x) \ (x \neq a)$$

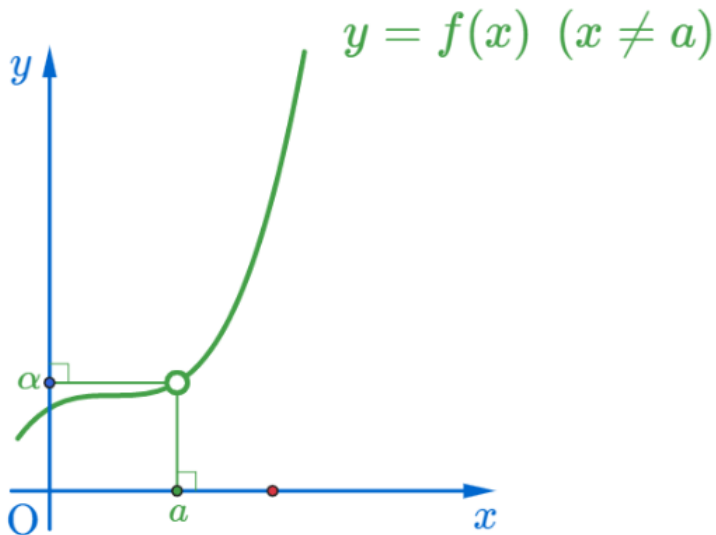
$$y = f(x) \ (x \neq a)$$



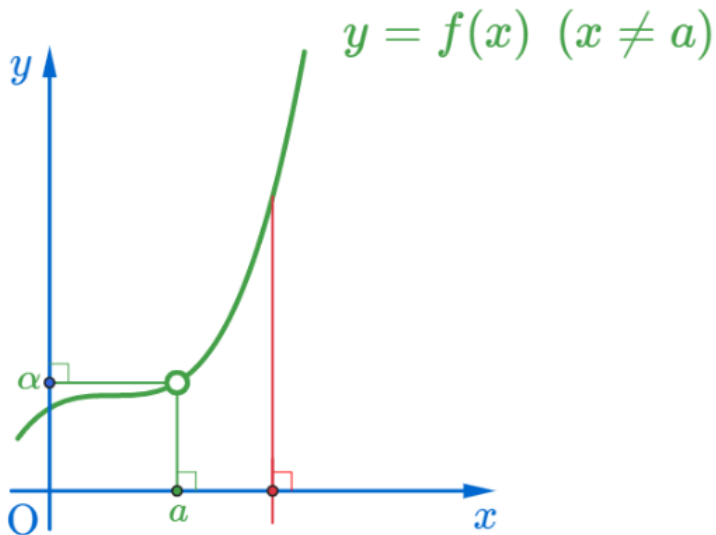
$$\lim_{x \rightarrow a} f(x) = \alpha \text{ of } y = f(x) \ (x \neq a)$$



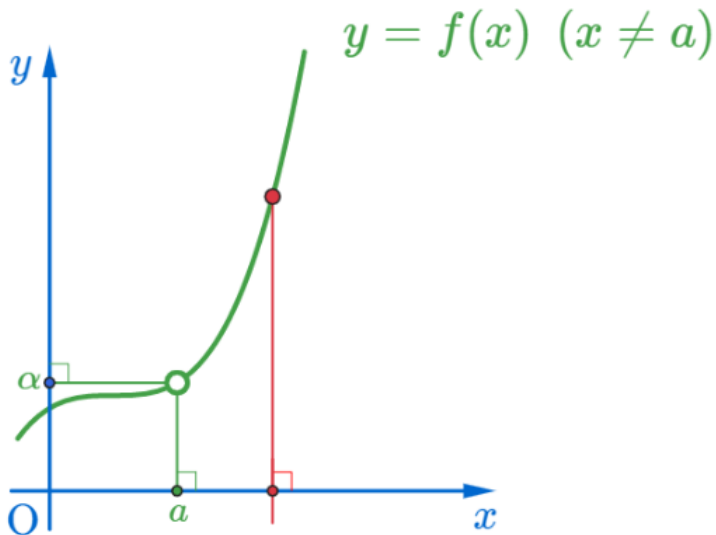
$$\lim_{x \rightarrow a} f(x) = \alpha \text{ of } y = f(x) \ (x \neq a)$$



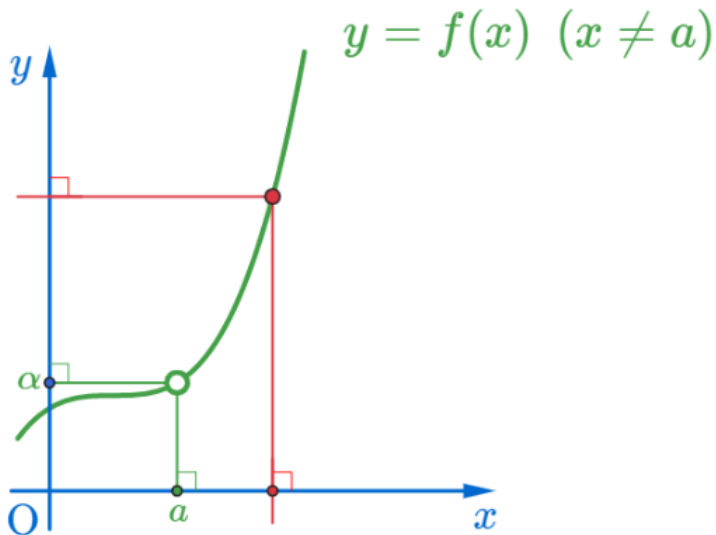
$$\lim_{x \rightarrow a} f(x) = \alpha \text{ of } y = f(x) \text{ (} x \neq a \text{)}$$



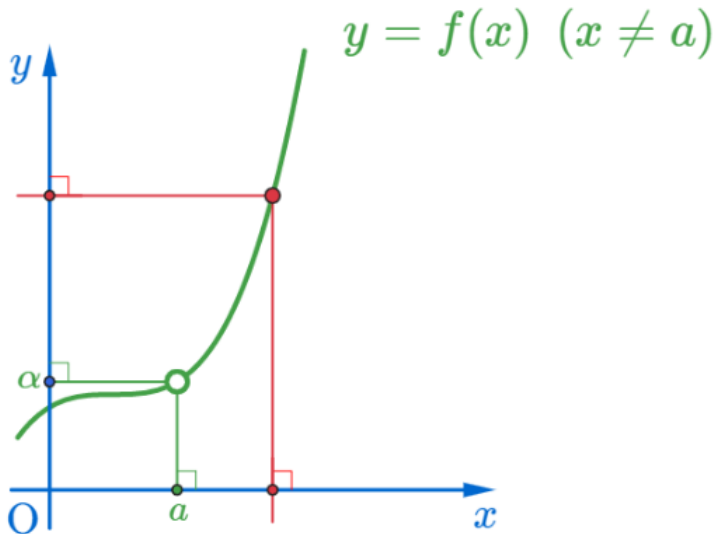
$$\lim_{x \rightarrow a} f(x) = \alpha \text{ of } y = f(x) \ (x \neq a)$$



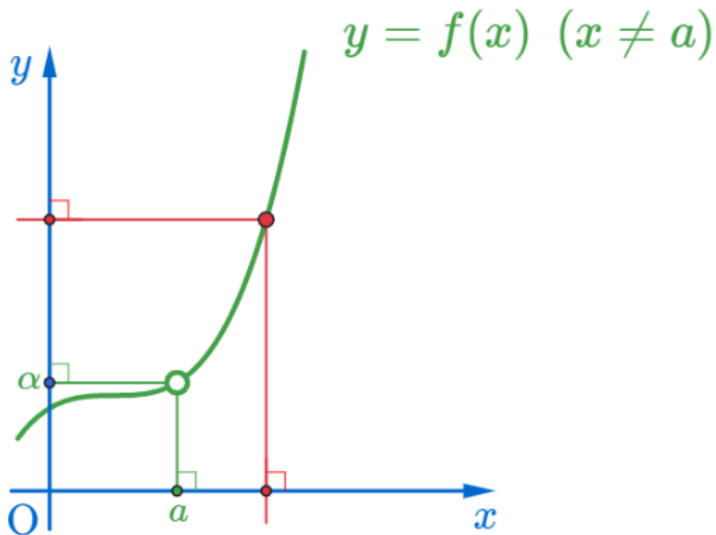
$$\lim_{x \rightarrow a} f(x) = \alpha \text{ of } y = f(x) \text{ (} x \neq a \text{)}$$



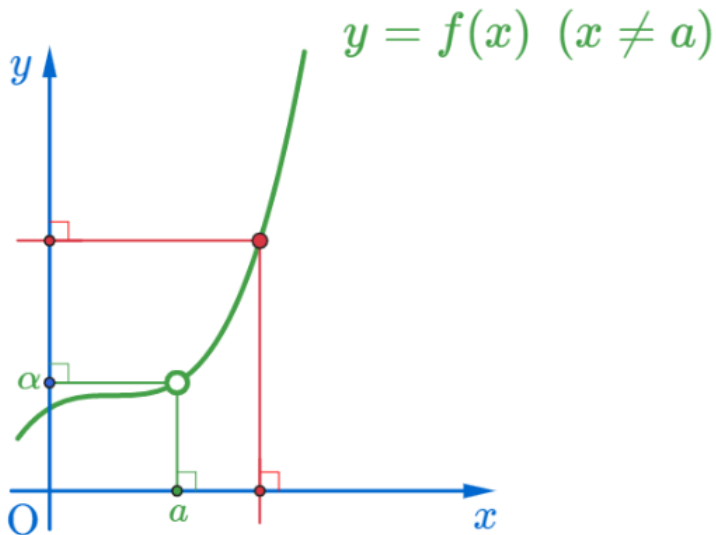
$$\lim_{x \rightarrow a} f(x) = \alpha \text{ of } y = f(x) \text{ (} x \neq a \text{)}$$



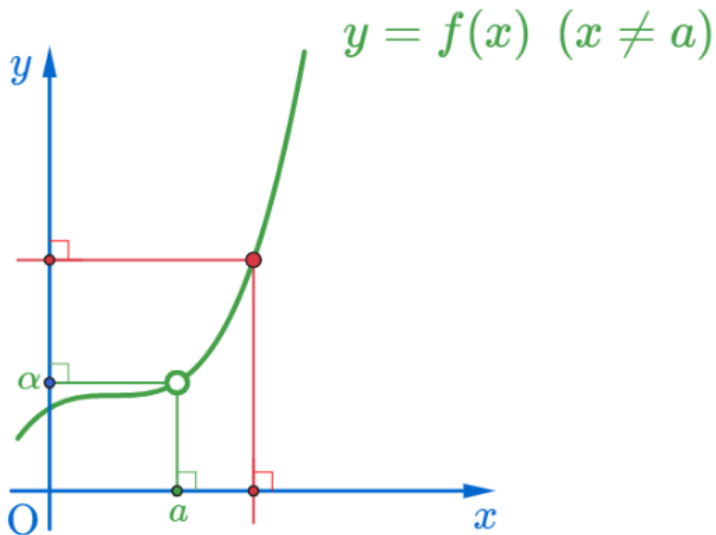
$$\lim_{x \rightarrow a} f(x) = \alpha \text{ of } y = f(x) \text{ (} x \neq a \text{)}$$



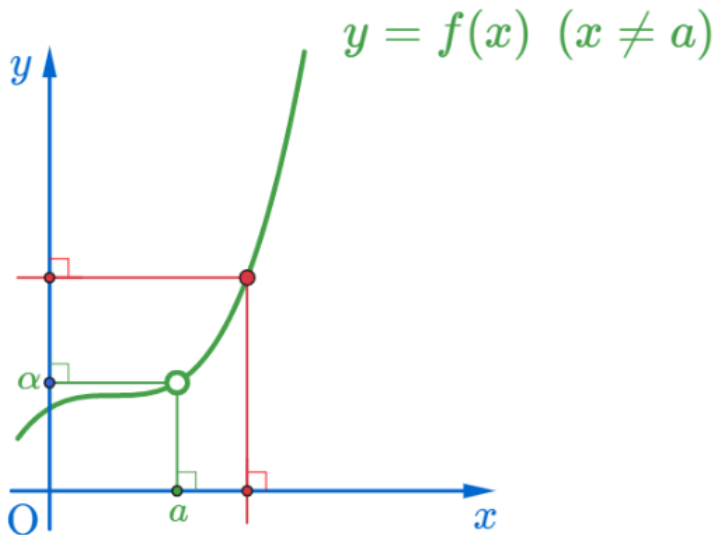
$$\lim_{x \rightarrow a} f(x) = \alpha \text{ of } y = f(x) \text{ (} x \neq a \text{)}$$



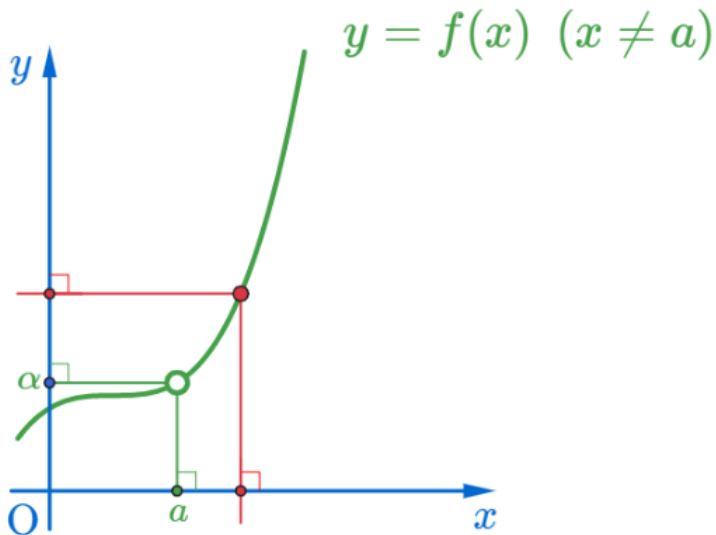
$$\lim_{x \rightarrow a} f(x) = \alpha \text{ of } y = f(x) \text{ (} x \neq a \text{)}$$



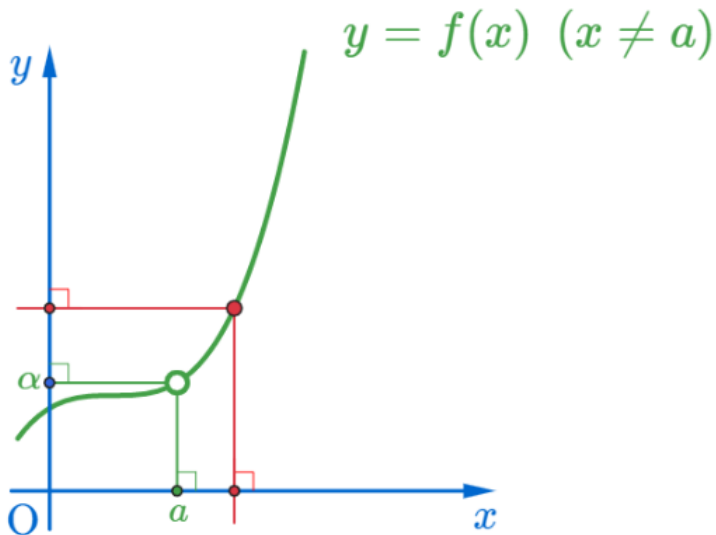
$$\lim_{x \rightarrow a} f(x) = \alpha \text{ of } y = f(x) \ (x \neq a)$$



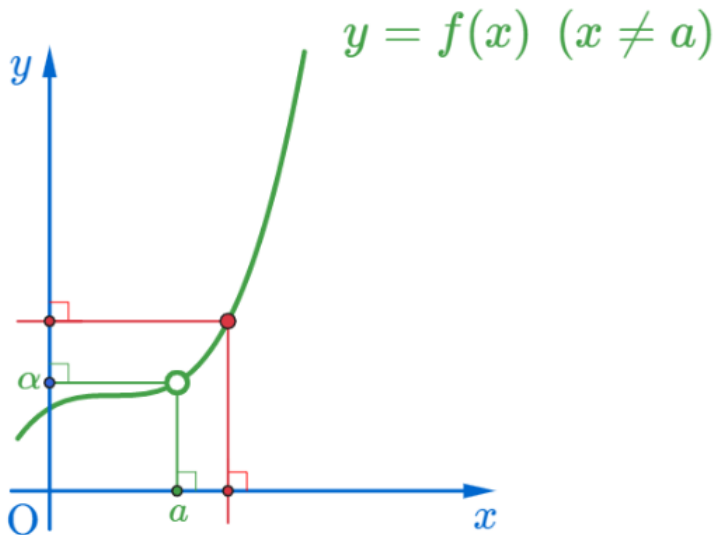
$$\lim_{x \rightarrow a} f(x) = \alpha \text{ of } y = f(x) \text{ (} x \neq a \text{)}$$



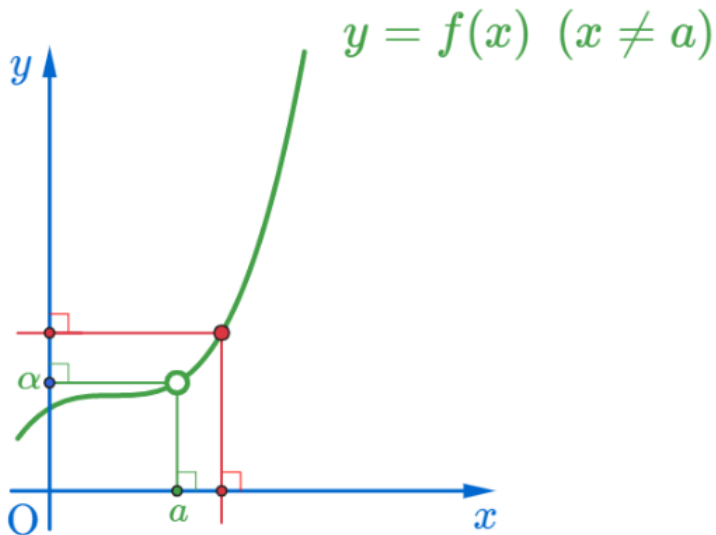
$$\lim_{x \rightarrow a} f(x) = \alpha \text{ of } y = f(x) \text{ (} x \neq a \text{)}$$



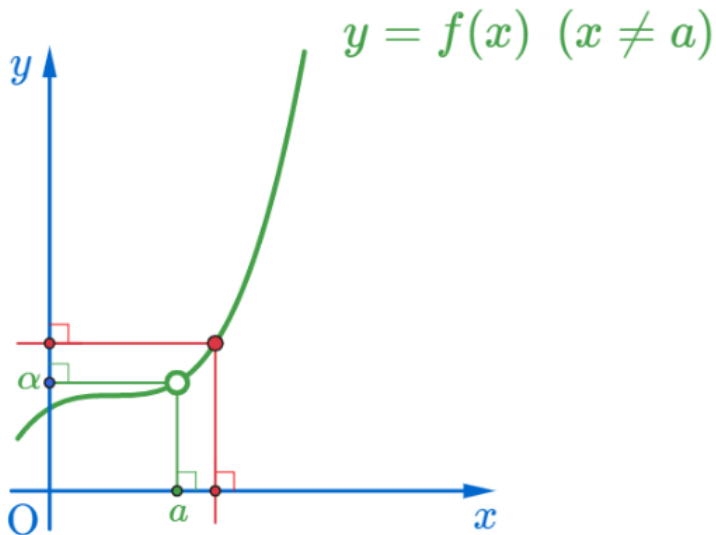
$$\lim_{x \rightarrow a} f(x) = \alpha \text{ of } y = f(x) \ (x \neq a)$$



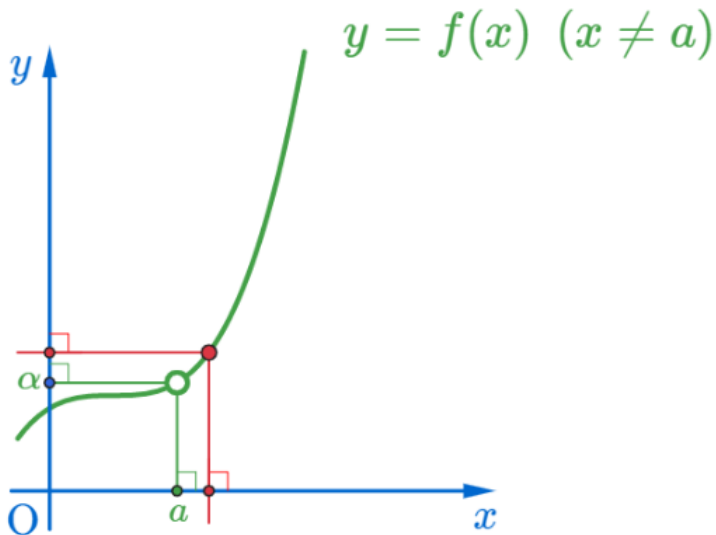
$$\lim_{x \rightarrow a} f(x) = \alpha \text{ of } y = f(x) \text{ (} x \neq a \text{)}$$



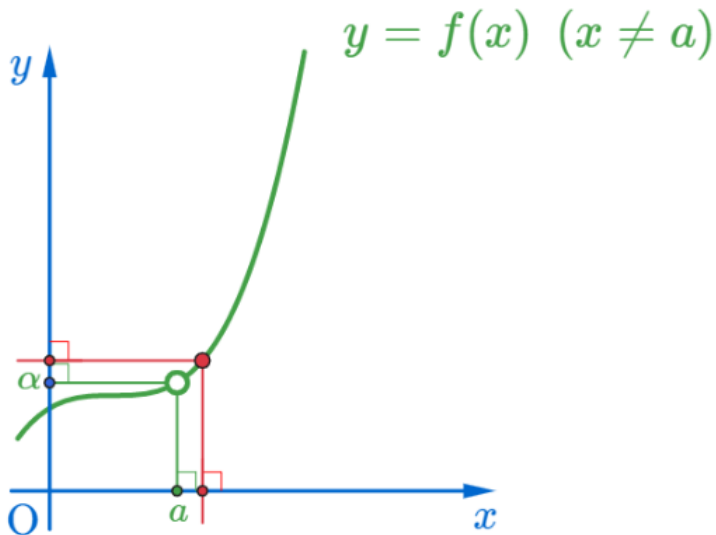
$$\lim_{x \rightarrow a} f(x) = \alpha \text{ of } y = f(x) \ (x \neq a)$$



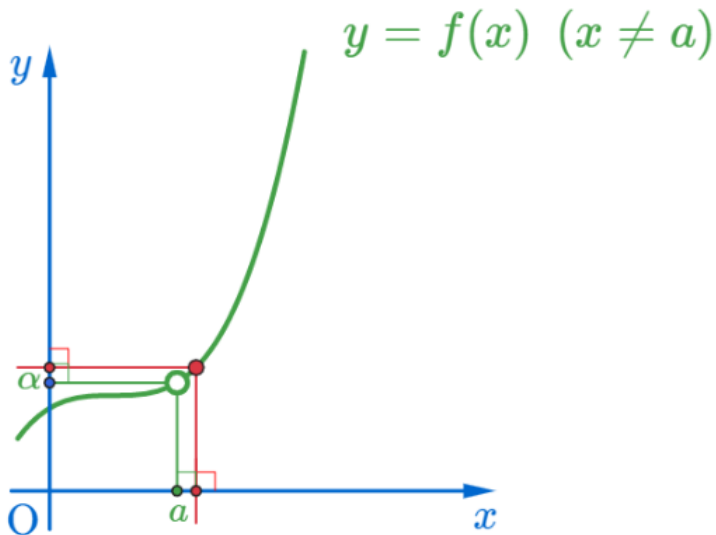
$$\lim_{x \rightarrow a} f(x) = \alpha \text{ of } y = f(x) \text{ (} x \neq a \text{)}$$



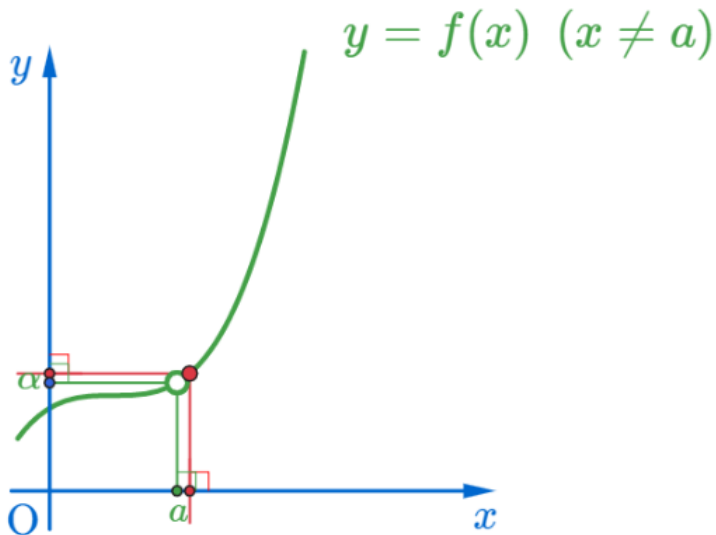
$$\lim_{x \rightarrow a} f(x) = \alpha \text{ of } y = f(x) \text{ (} x \neq a \text{)}$$



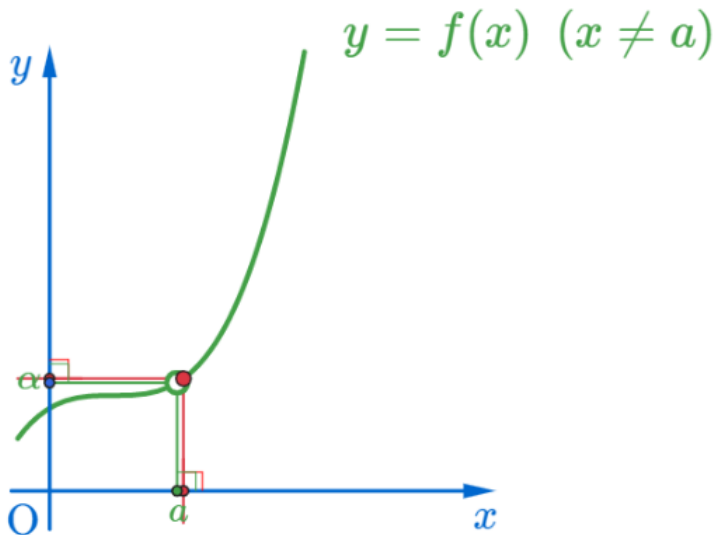
$$\lim_{x \rightarrow a} f(x) = \alpha \text{ of } y = f(x) \text{ (} x \neq a \text{)}$$



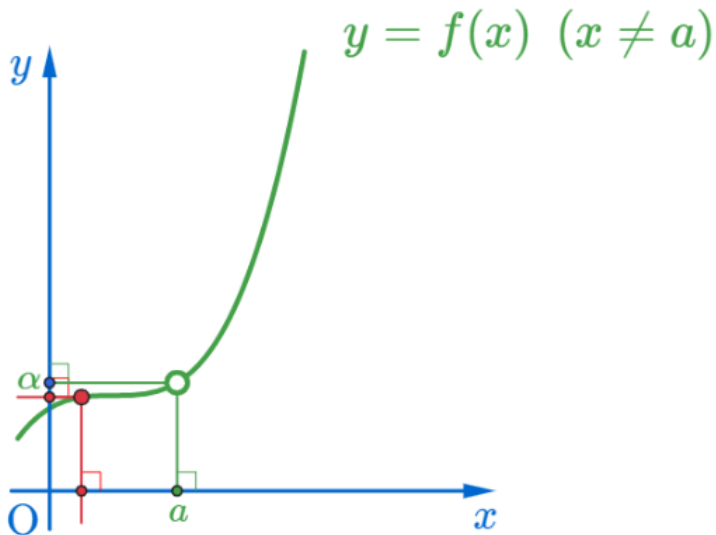
$$\lim_{x \rightarrow a} f(x) = \alpha \text{ of } y = f(x) \ (x \neq a)$$



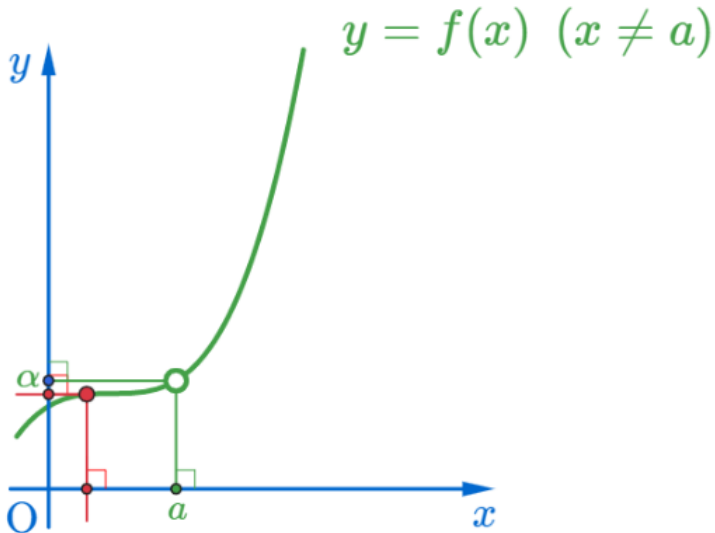
$$\lim_{x \rightarrow a} f(x) = \alpha \text{ of } y = f(x) \ (x \neq a)$$



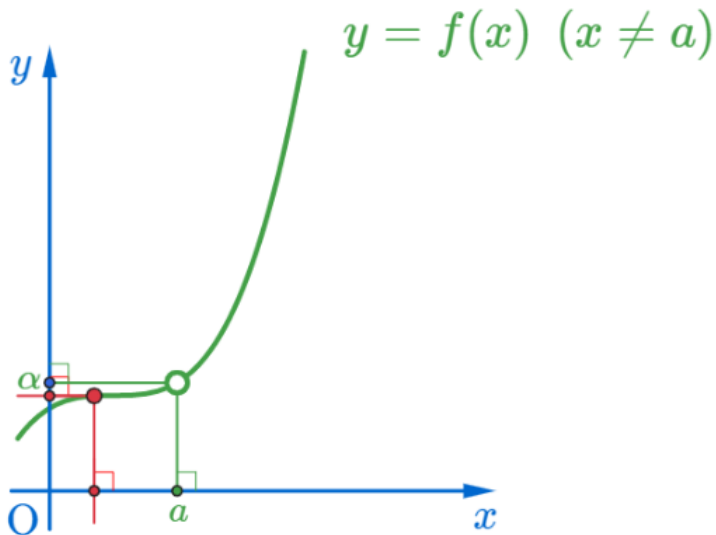
$$\lim_{x \rightarrow a} f(x) = \alpha \text{ of } y = f(x) \ (x \neq a)$$



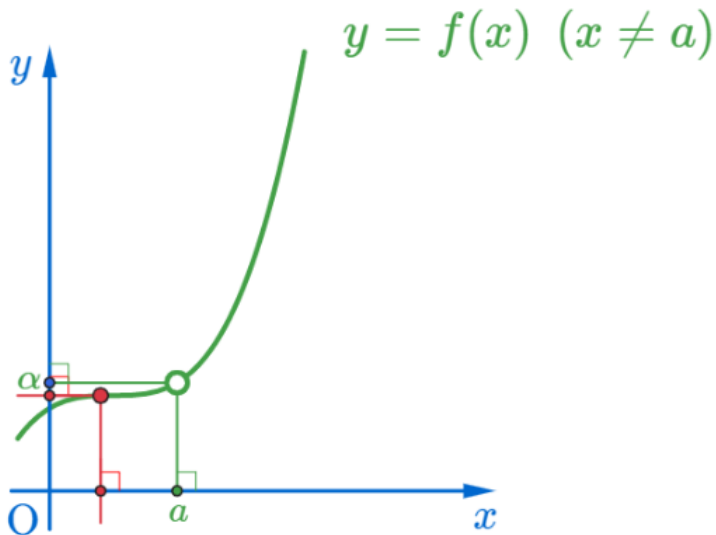
$$\lim_{x \rightarrow a} f(x) = \alpha \text{ of } y = f(x) \ (x \neq a)$$



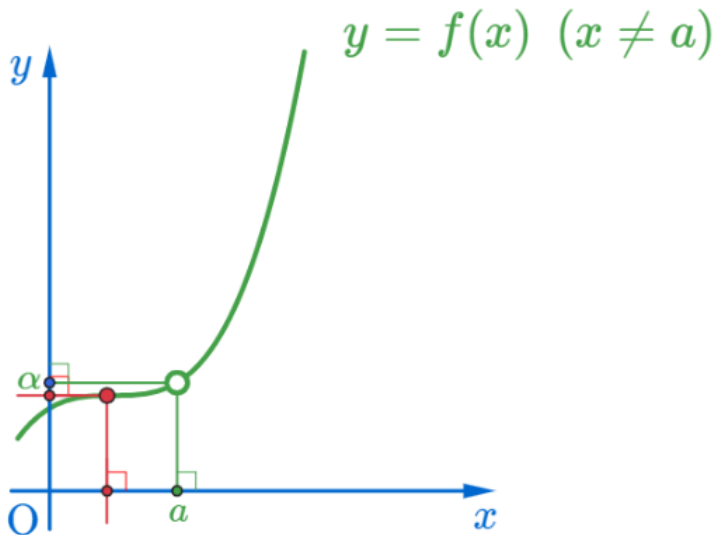
$$\lim_{x \rightarrow a} f(x) = \alpha \text{ of } y = f(x) \ (x \neq a)$$



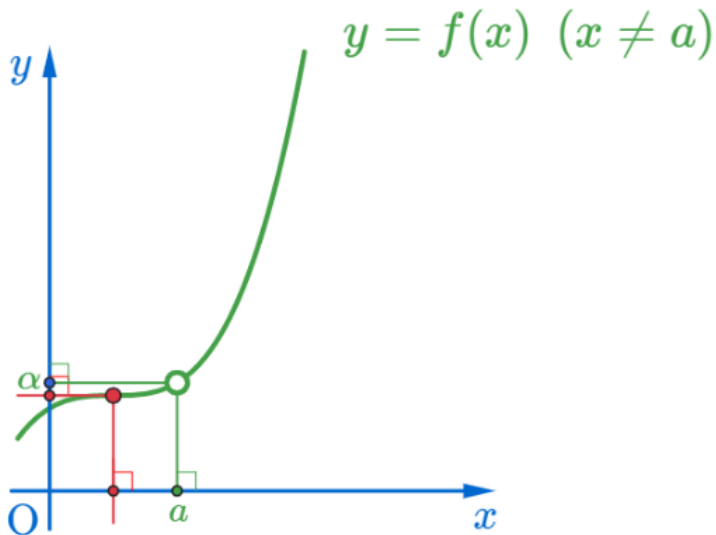
$$\lim_{x \rightarrow a} f(x) = \alpha \text{ of } y = f(x) \ (x \neq a)$$



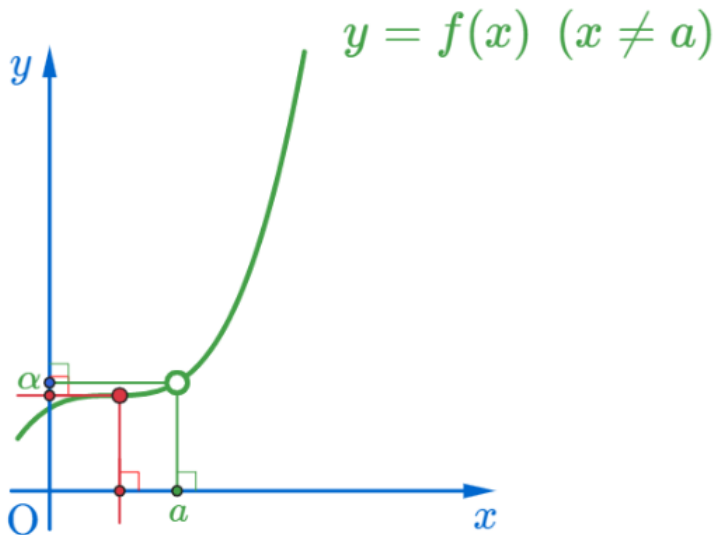
$$\lim_{x \rightarrow a} f(x) = \alpha \text{ of } y = f(x) \text{ (} x \neq a \text{)}$$



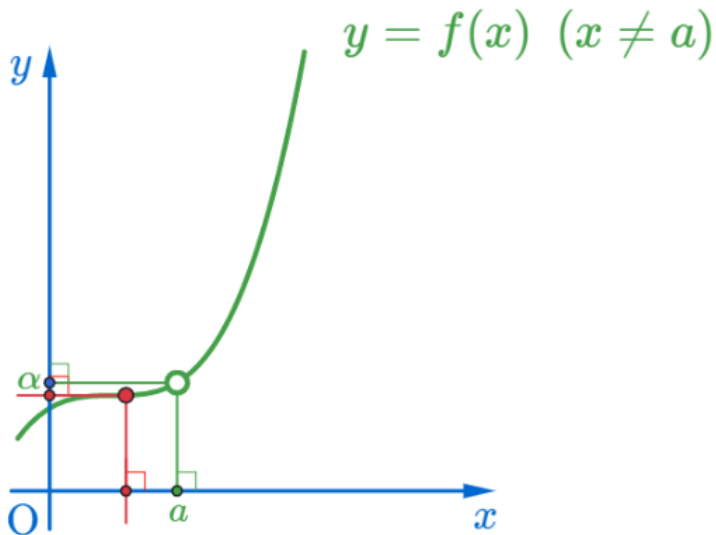
$$\lim_{x \rightarrow a} f(x) = \alpha \text{ of } y = f(x) \text{ (} x \neq a \text{)}$$



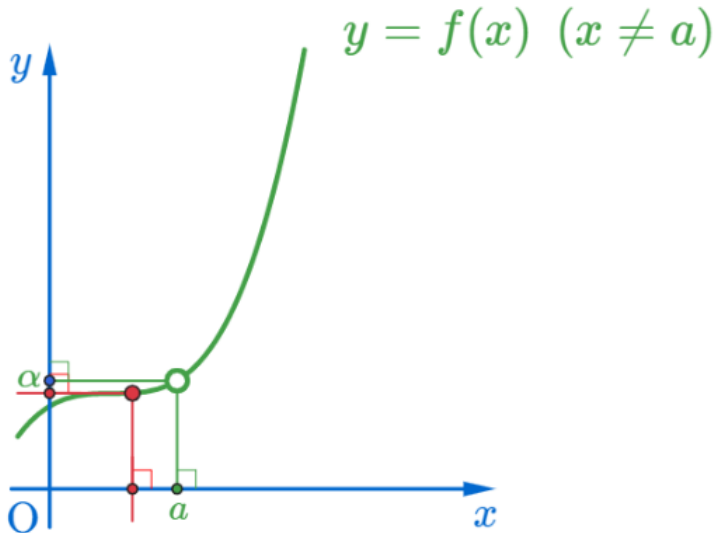
$$\lim_{x \rightarrow a} f(x) = \alpha \text{ of } y = f(x) \text{ (} x \neq a \text{)}$$



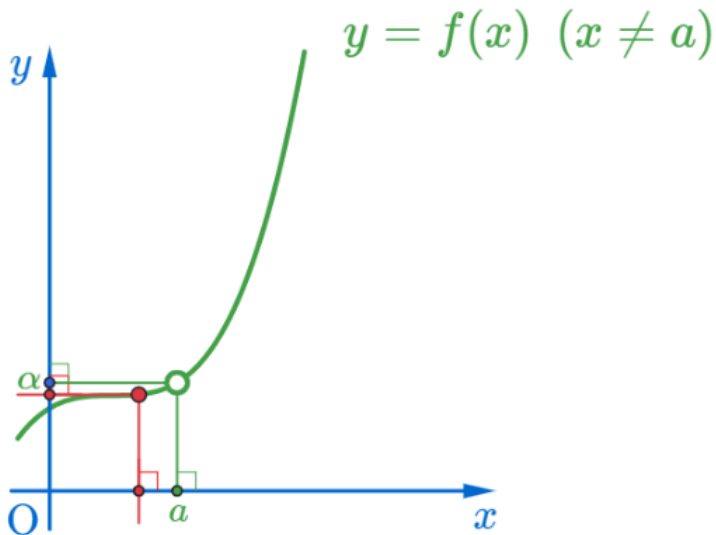
$$\lim_{x \rightarrow a} f(x) = \alpha \text{ of } y = f(x) \text{ (} x \neq a \text{)}$$



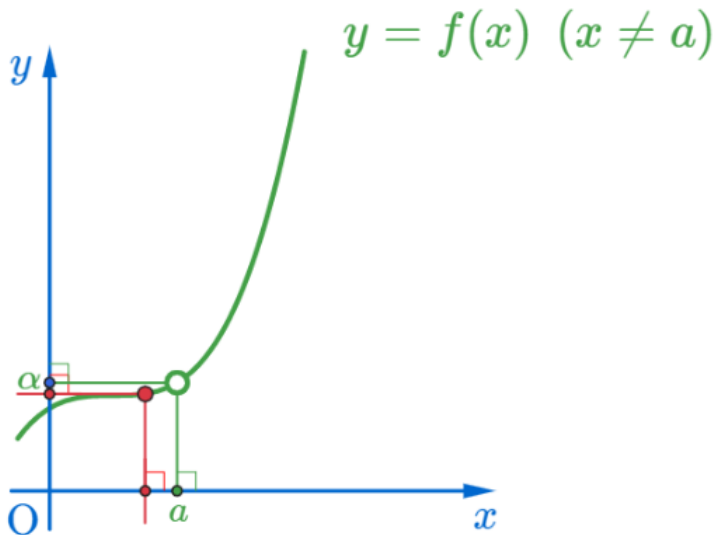
$$\lim_{x \rightarrow a} f(x) = \alpha \text{ of } y = f(x) \text{ (} x \neq a \text{)}$$



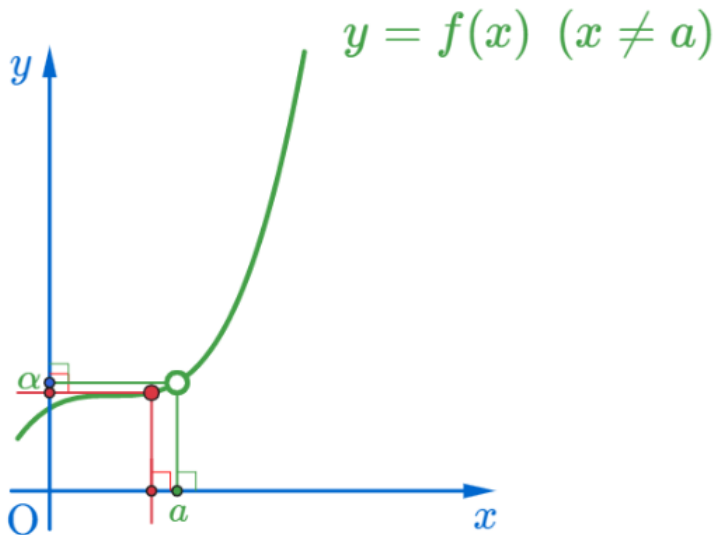
$$\lim_{x \rightarrow a} f(x) = \alpha \text{ of } y = f(x) \text{ (} x \neq a \text{)}$$



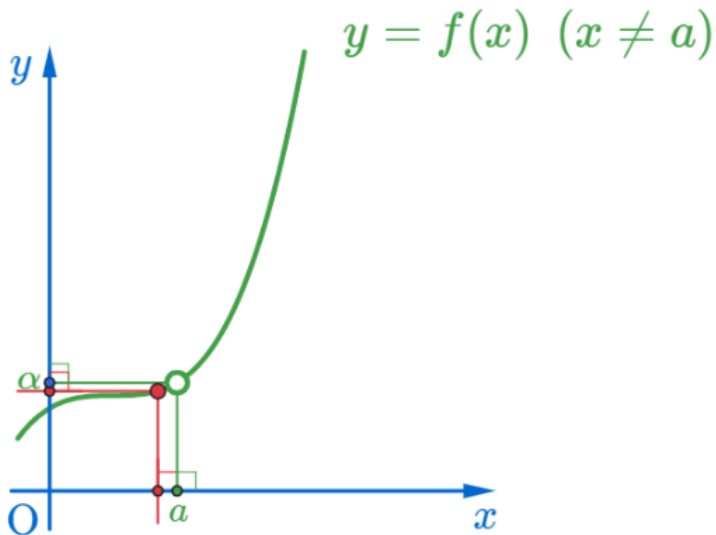
$$\lim_{x \rightarrow a} f(x) = \alpha \text{ of } y = f(x) \text{ (} x \neq a \text{)}$$



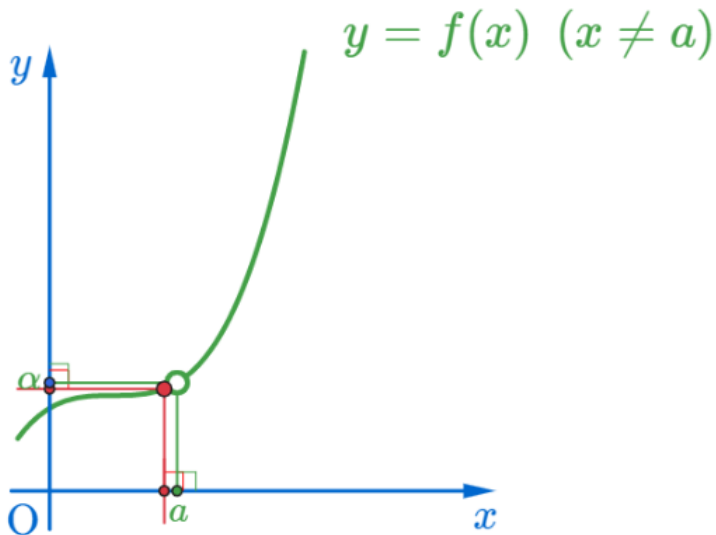
$$\lim_{x \rightarrow a} f(x) = \alpha \text{ of } y = f(x) \ (x \neq a)$$



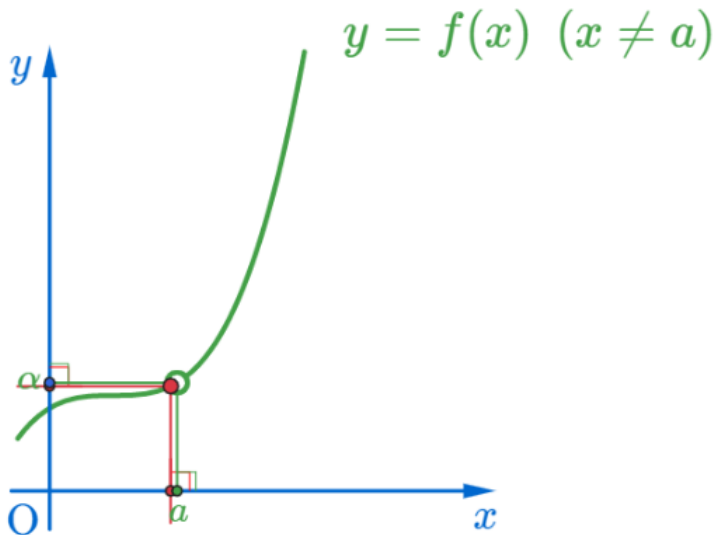
$$\lim_{x \rightarrow a} f(x) = \alpha \text{ of } y = f(x) \ (x \neq a)$$



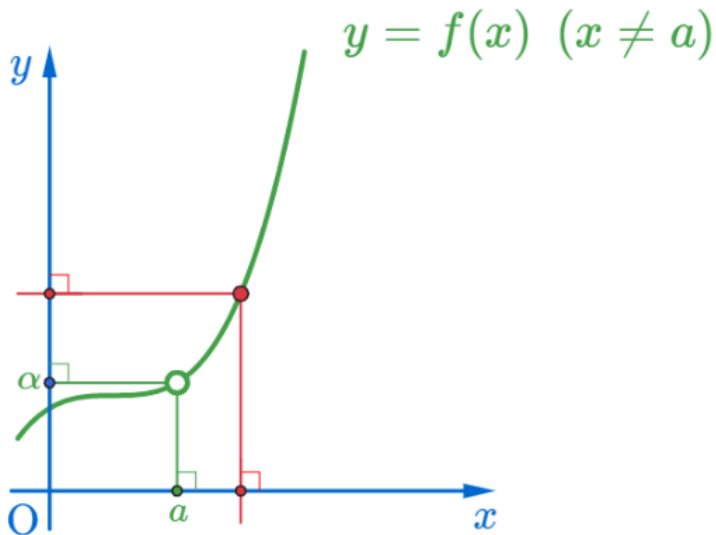
$$\lim_{x \rightarrow a} f(x) = \alpha \text{ of } y = f(x) \ (x \neq a)$$



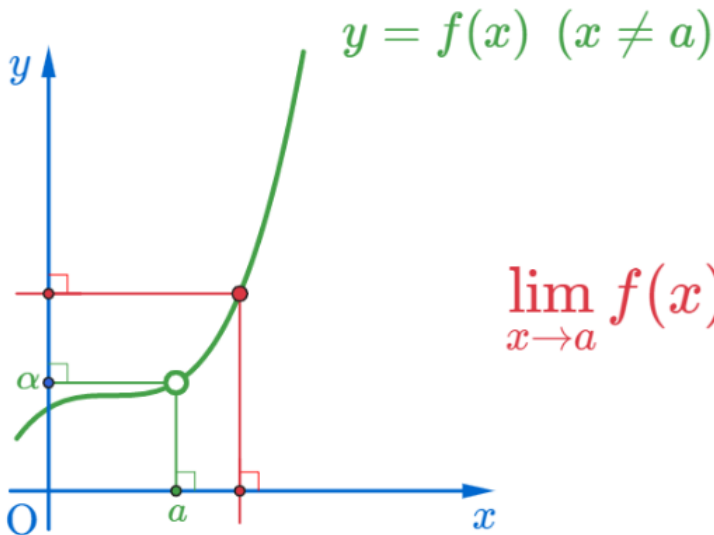
$$\lim_{x \rightarrow a} f(x) = \alpha \text{ of } y = f(x) \ (x \neq a)$$



$$\lim_{x \rightarrow a} f(x) = \alpha \text{ of } y = f(x) \ (x \neq a)$$



$$\lim_{x \rightarrow a} f(x) = \alpha \text{ of } y = f(x) \ (x \neq a)$$



$$\lim_{x \rightarrow a} f(x) = \alpha \text{ of } y = f(x) \quad (x \neq a)$$

Github:

<https://min7014.github.io/math20200829001.html>

Click or paste URL into the URL search bar, and you can see a picture moving.