

When a directrix is  $y = -p$  and a focus is  $(0, p)$ , find the equation of the parabola.

준선이  $y = -p$  이고 초점이  $(0, p)$  일 때, 포물선의 방정식을 구하여라.

(When a directrix is  $y = -p$  and a focus is  $(0, p)$ , find the equation of the parabola.)

When a directrix is  $y = -p$  and a focus is  $(0, p)$ , find the equation of the parabola.

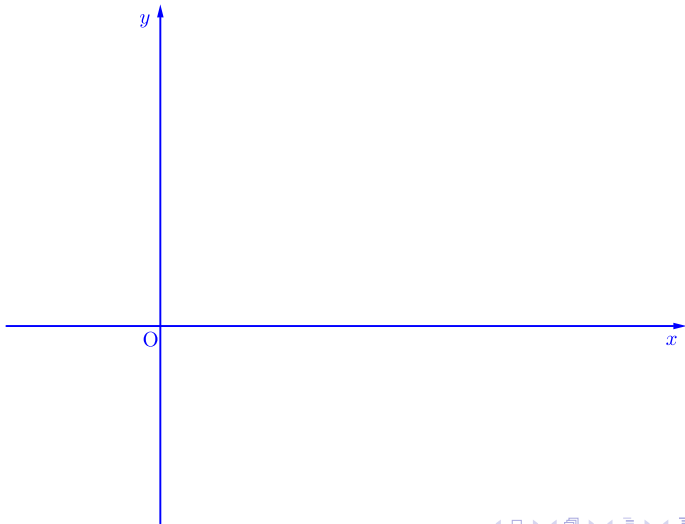
▶ Start

▶ End

When a directrix is  $y = -p$  and a focus is  $(0, p)$ , find the equation of the parabola.

▶ Start

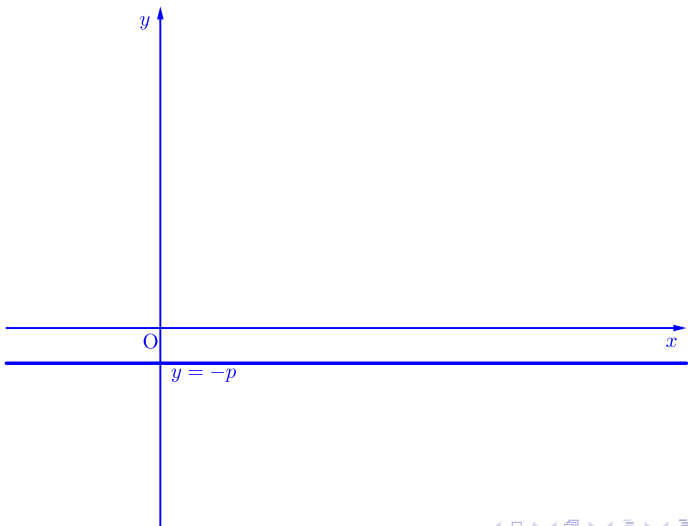
▶ End



When a directrix is  $y = -p$  and a focus is  $(0, p)$ , find the equation of the parabola.

▶ Start

▶ End

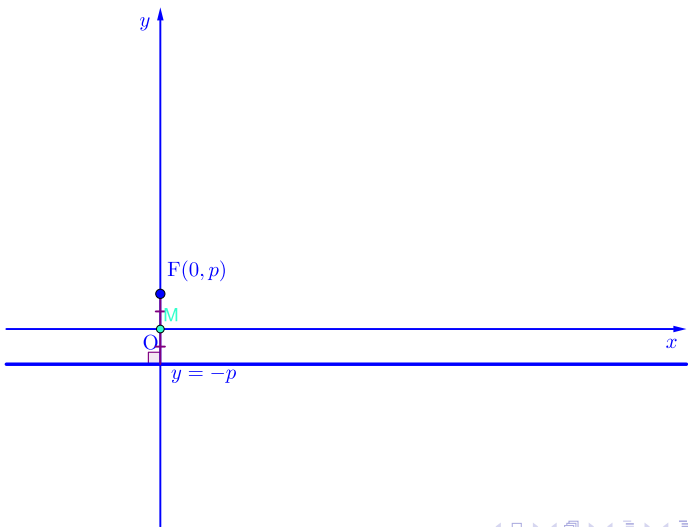




When a directrix is  $y = -p$  and a focus is  $(0, p)$ , find the equation of the parabola.

▶ Start

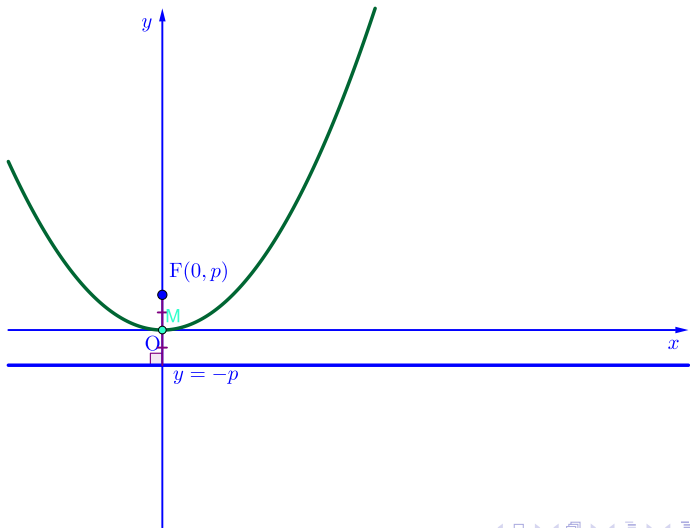
▶ End



When a directrix is  $y = -p$  and a focus is  $(0, p)$ , find the equation of the parabola.

▶ Start

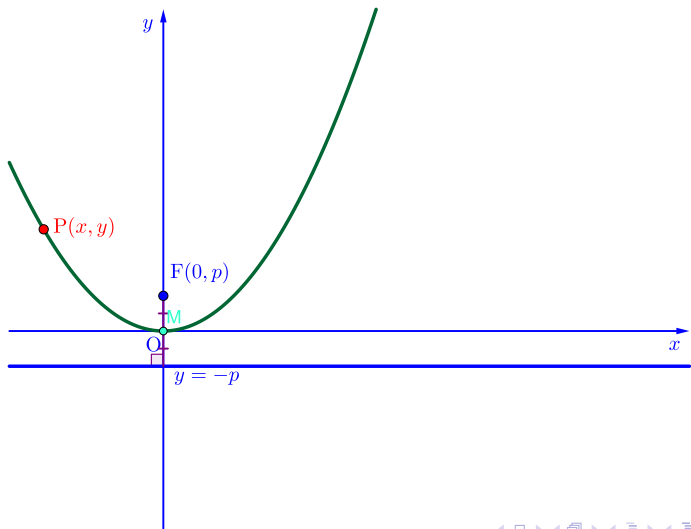
▶ End



When a directrix is  $y = -p$  and a focus is  $(0, p)$ , find the equation of the parabola.

▶ Start

▶ End

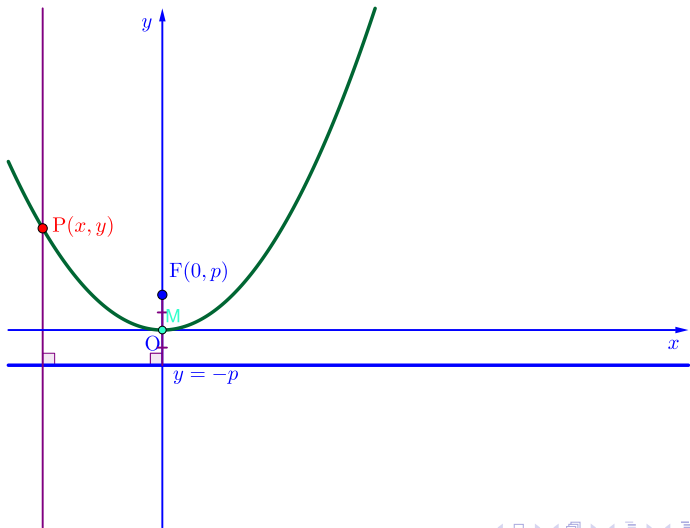




When a directrix is  $y = -p$  and a focus is  $(0, p)$ , find the equation of the parabola.

▶ Start

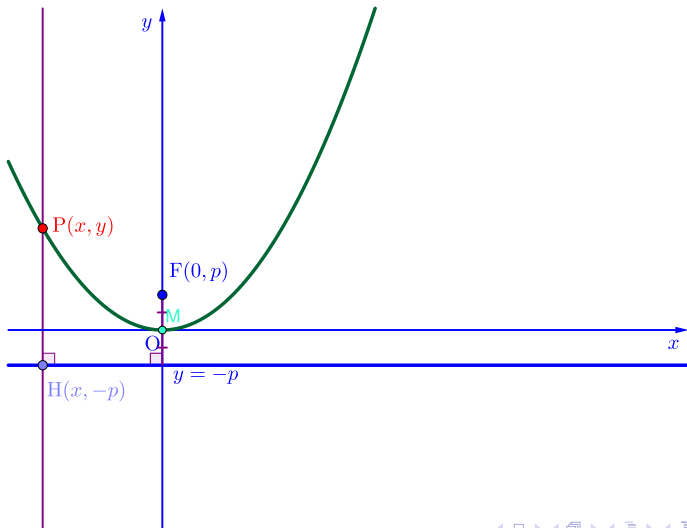
▶ End



When a directrix is  $y = -p$  and a focus is  $(0, p)$ , find the equation of the parabola.

▶ Start

▶ End

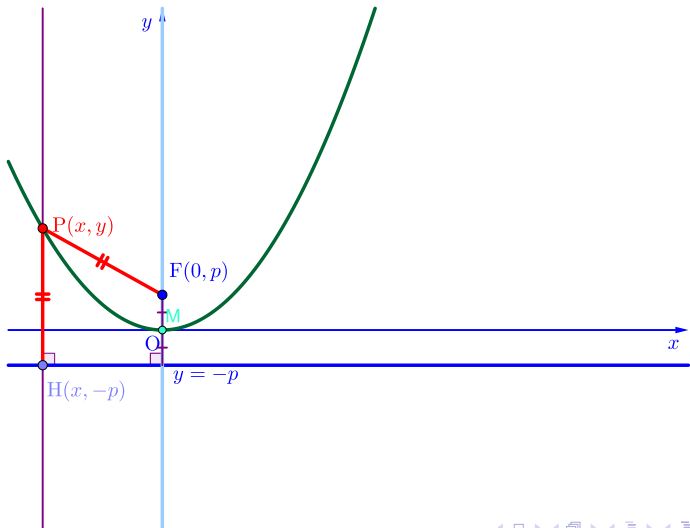




When a directrix is  $y = -p$  and a focus is  $(0, p)$ , find the equation of the parabola.

▶ Start

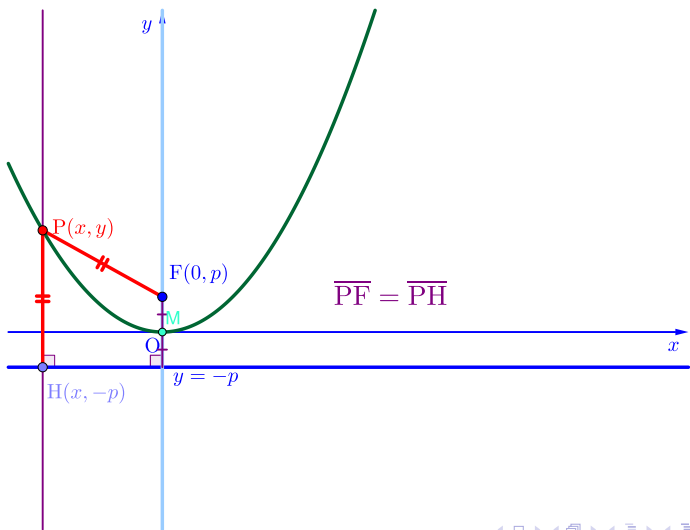
▶ End



When a directrix is  $y = -p$  and a focus is  $(0, p)$ , find the equation of the parabola.

▶ Start

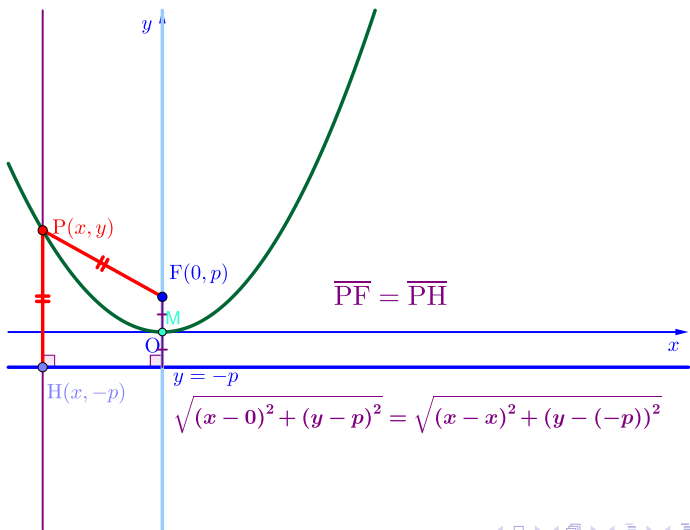
▶ End



When a directrix is  $y = -p$  and a focus is  $(0, p)$ , find the equation of the parabola.

▶ Start

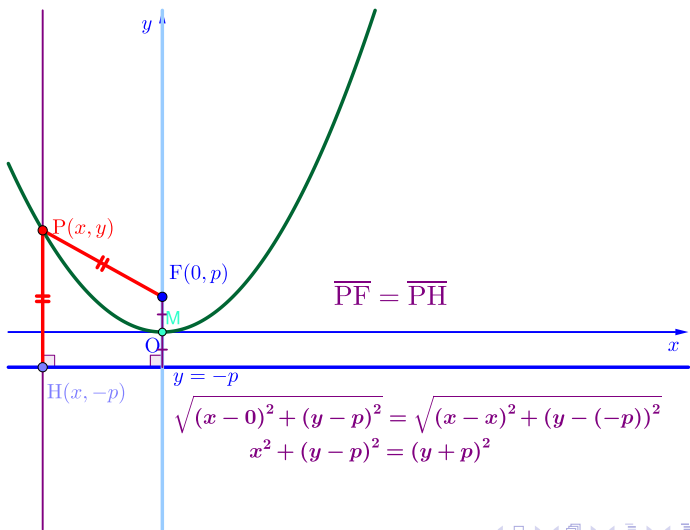
▶ End



When a directrix is  $y = -p$  and a focus is  $(0, p)$ , find the equation of the parabola.

▶ Start

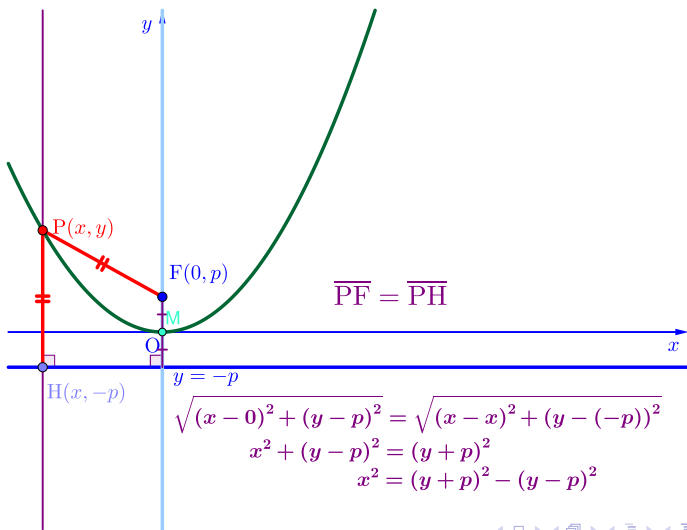
▶ End



When a directrix is  $y = -p$  and a focus is  $(0, p)$ , find the equation of the parabola.

▶ Start

▶ End

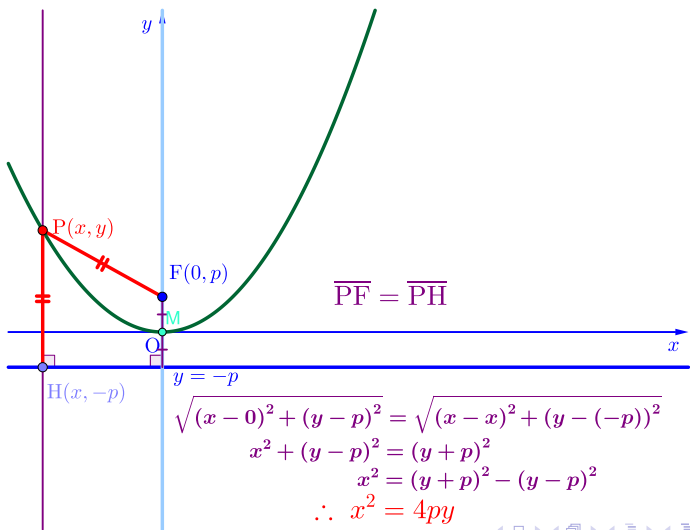




When a directrix is  $y = -p$  and a focus is  $(0, p)$ , find the equation of the parabola.

▶ Start

▶ End



When a directrix is  $y = -p$  and a focus is  $(0, p)$ , find the equation of the parabola.

Github:

<https://min7014.github.io/math20200415002.html>

Click or paste URL into the URL search bar,  
and you can see a picture moving.