

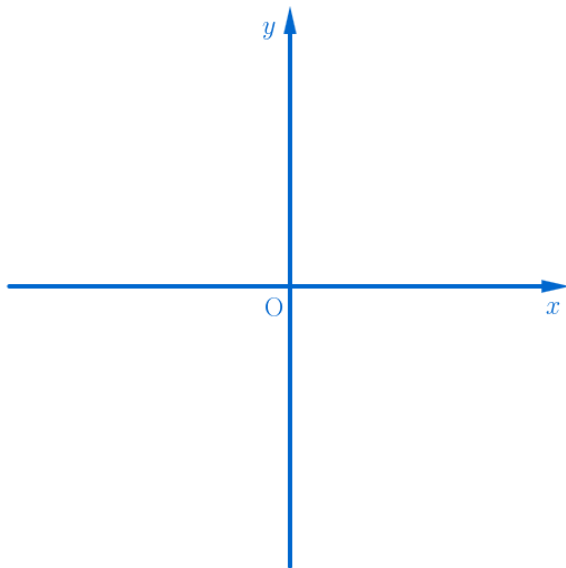
Discontinuity for $g(x) = \frac{x^2 - 1}{x - 1}$ at $x = 1$

$g(x) = \frac{x^2 - 1}{x - 1}$ 의 $x = 1$ 에서의 불연속

(Discontinuity for $g(x) = \frac{x^2 - 1}{x - 1}$ at $x = 1$)

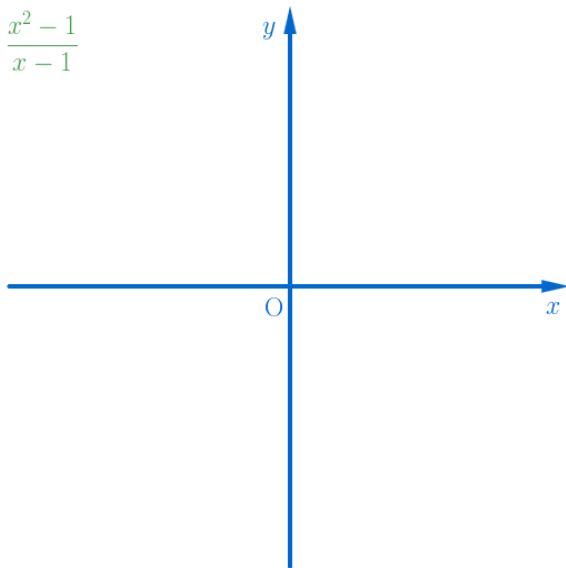
Discontinuity for $g(x) = \frac{x^2 - 1}{x - 1}$ at $x = 1$

Discontinuity for $g(x) = \frac{x^2 - 1}{x - 1}$ at $x = 1$



Discontinuity for $g(x) = \frac{x^2 - 1}{x - 1}$ at $x = 1$

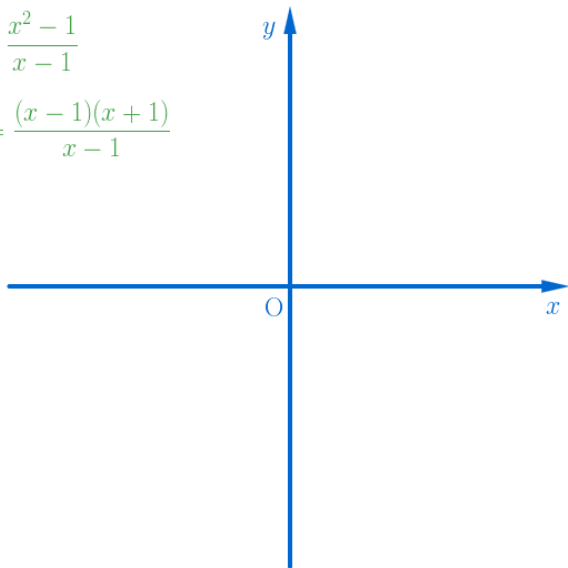
$$y = g(x) = \frac{x^2 - 1}{x - 1}$$



Discontinuity for $g(x) = \frac{x^2 - 1}{x - 1}$ at $x = 1$

$$y = g(x) = \frac{x^2 - 1}{x - 1}$$

$$y = g(x) = \frac{(x - 1)(x + 1)}{x - 1}$$

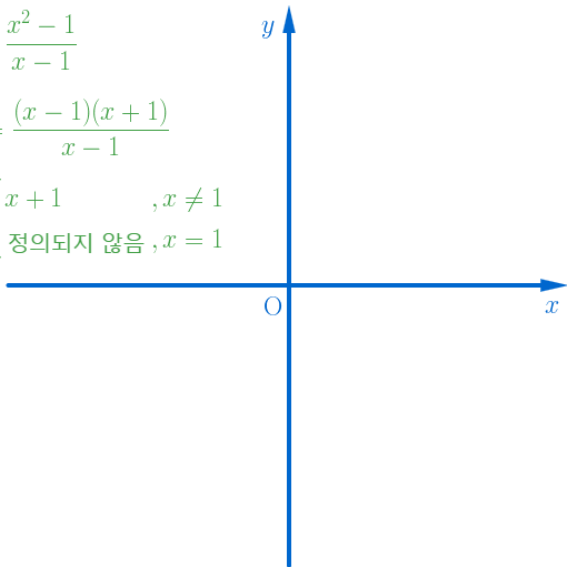


Discontinuity for $g(x) = \frac{x^2 - 1}{x - 1}$ at $x = 1$

$$y = g(x) = \frac{x^2 - 1}{x - 1}$$

$$y = g(x) = \frac{(x - 1)(x + 1)}{x - 1}$$

$$y = g(x) = \begin{cases} x + 1 & , x \neq 1 \\ \text{정의되지 않음} & , x = 1 \end{cases}$$

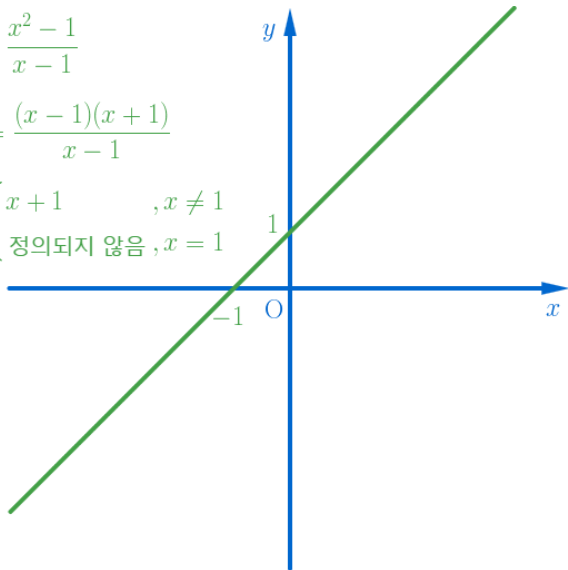


Discontinuity for $g(x) = \frac{x^2 - 1}{x - 1}$ at $x = 1$

$$y = g(x) = \frac{x^2 - 1}{x - 1}$$

$$y = g(x) = \frac{(x - 1)(x + 1)}{x - 1}$$

$$y = g(x) = \begin{cases} x + 1, & x \neq 1 \\ \text{정의되지 않음}, & x = 1 \end{cases}$$

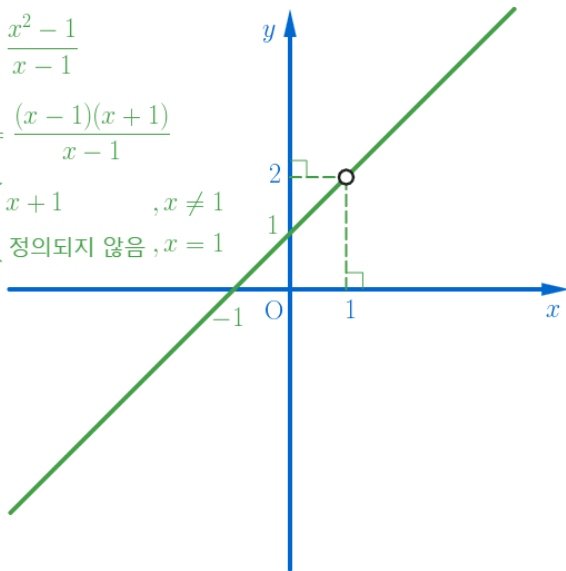


Discontinuity for $g(x) = \frac{x^2 - 1}{x - 1}$ at $x = 1$

$$y = g(x) = \frac{x^2 - 1}{x - 1}$$

$$y = g(x) = \frac{(x - 1)(x + 1)}{x - 1}$$

$$y = g(x) = \begin{cases} x + 1, & x \neq 1 \\ \text{정의되지 않음}, & x = 1 \end{cases}$$

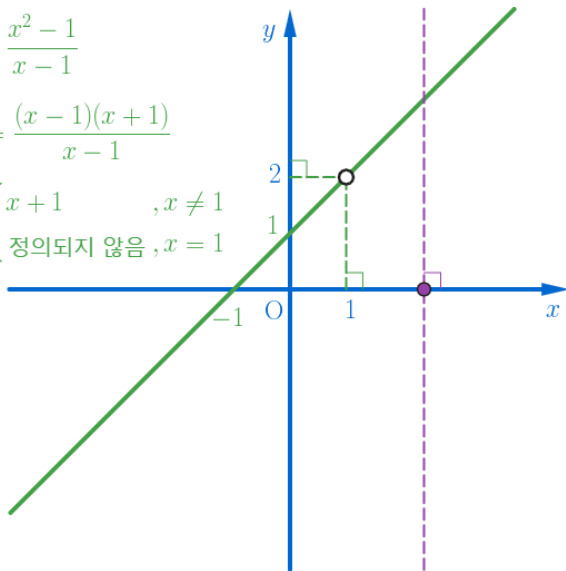


Discontinuity for $g(x) = \frac{x^2 - 1}{x - 1}$ at $x = 1$

$$y = g(x) = \frac{x^2 - 1}{x - 1}$$

$$y = g(x) = \frac{(x - 1)(x + 1)}{x - 1}$$

$$y = g(x) = \begin{cases} x + 1, & x \neq 1 \\ \text{정의되지 않음}, & x = 1 \end{cases}$$

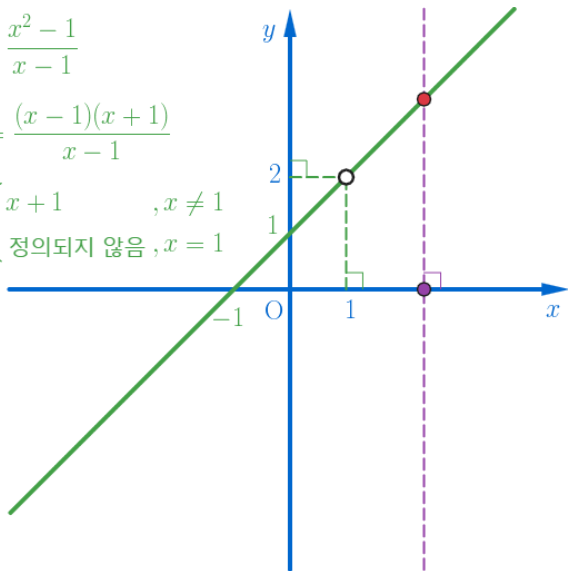


Discontinuity for $g(x) = \frac{x^2 - 1}{x - 1}$ at $x = 1$

$$y = g(x) = \frac{x^2 - 1}{x - 1}$$

$$y = g(x) = \frac{(x - 1)(x + 1)}{x - 1}$$

$$y = g(x) = \begin{cases} x + 1, & x \neq 1 \\ \text{정의되지 않음}, & x = 1 \end{cases}$$

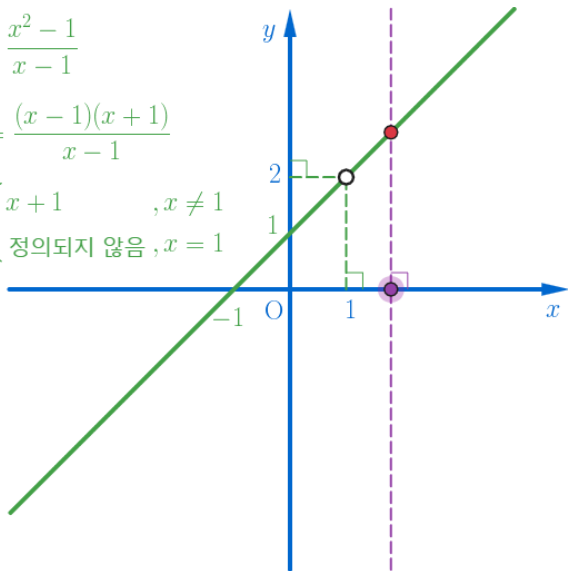


Discontinuity for $g(x) = \frac{x^2 - 1}{x - 1}$ at $x = 1$

$$y = g(x) = \frac{x^2 - 1}{x - 1}$$

$$y = g(x) = \frac{(x - 1)(x + 1)}{x - 1}$$

$$y = g(x) = \begin{cases} x + 1, & x \neq 1 \\ \text{정의되지 않음}, & x = 1 \end{cases}$$

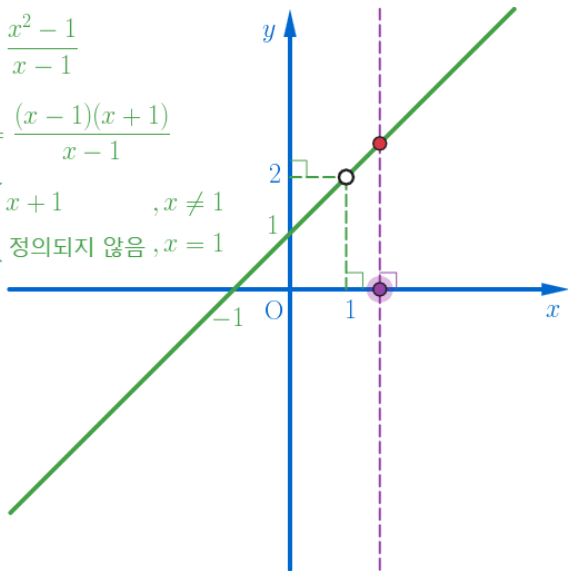


Discontinuity for $g(x) = \frac{x^2 - 1}{x - 1}$ at $x = 1$

$$y = g(x) = \frac{x^2 - 1}{x - 1}$$

$$y = g(x) = \frac{(x - 1)(x + 1)}{x - 1}$$

$$y = g(x) = \begin{cases} x + 1, & x \neq 1 \\ \text{정의되지 않음}, & x = 1 \end{cases}$$

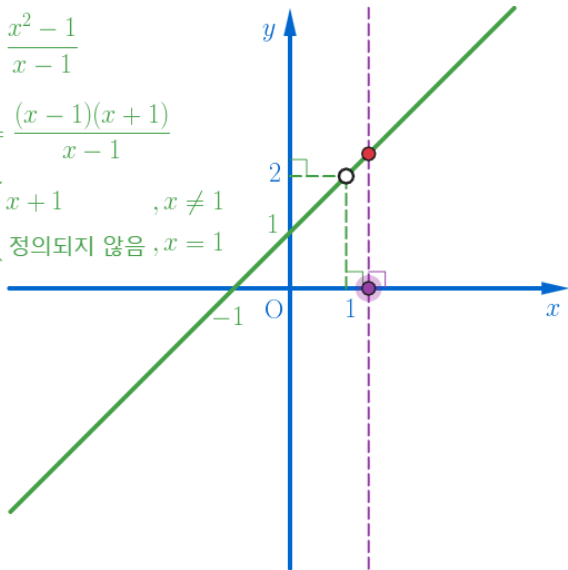


Discontinuity for $g(x) = \frac{x^2 - 1}{x - 1}$ at $x = 1$

$$y = g(x) = \frac{x^2 - 1}{x - 1}$$

$$y = g(x) = \frac{(x - 1)(x + 1)}{x - 1}$$

$$y = g(x) = \begin{cases} x + 1, & x \neq 1 \\ \text{정의되지 않음}, & x = 1 \end{cases}$$

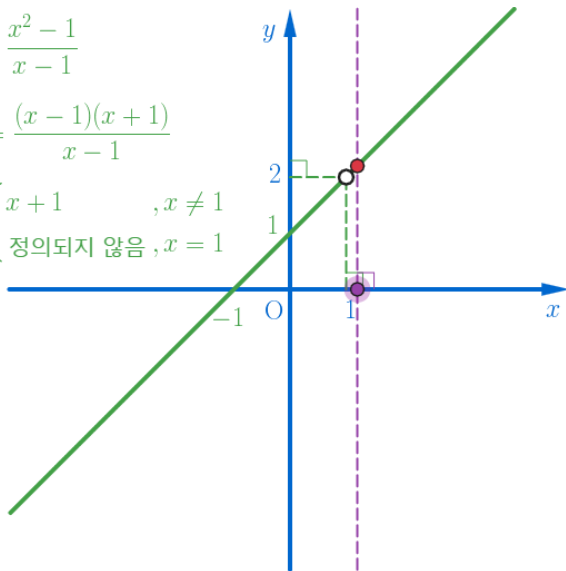


Discontinuity for $g(x) = \frac{x^2 - 1}{x - 1}$ at $x = 1$

$$y = g(x) = \frac{x^2 - 1}{x - 1}$$

$$y = g(x) = \frac{(x - 1)(x + 1)}{x - 1}$$

$$y = g(x) = \begin{cases} x + 1, & x \neq 1 \\ \text{정의되지 않음}, & x = 1 \end{cases}$$

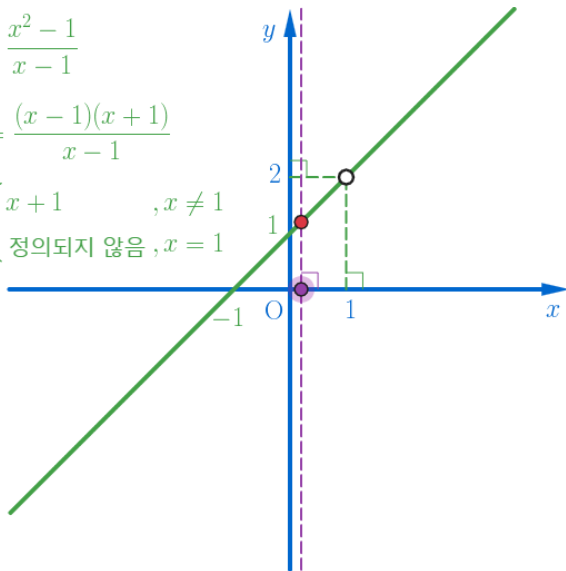


Discontinuity for $g(x) = \frac{x^2 - 1}{x - 1}$ at $x = 1$

$$y = g(x) = \frac{x^2 - 1}{x - 1}$$

$$y = g(x) = \frac{(x - 1)(x + 1)}{x - 1}$$

$$y = g(x) = \begin{cases} x + 1, & x \neq 1 \\ \text{정의되지 않음}, & x = 1 \end{cases}$$

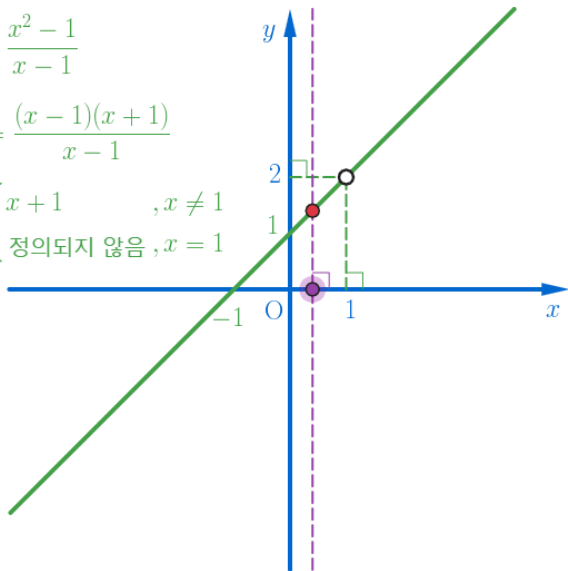


Discontinuity for $g(x) = \frac{x^2 - 1}{x - 1}$ at $x = 1$

$$y = g(x) = \frac{x^2 - 1}{x - 1}$$

$$y = g(x) = \frac{(x - 1)(x + 1)}{x - 1}$$

$$y = g(x) = \begin{cases} x + 1, & x \neq 1 \\ \text{정의되지 않음}, & x = 1 \end{cases}$$

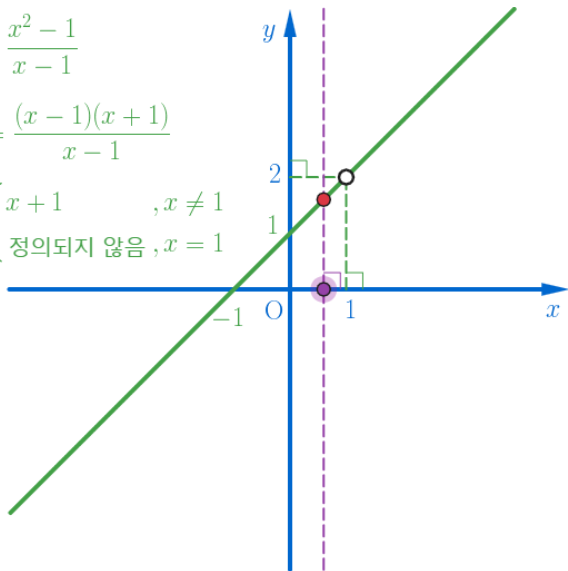


Discontinuity for $g(x) = \frac{x^2 - 1}{x - 1}$ at $x = 1$

$$y = g(x) = \frac{x^2 - 1}{x - 1}$$

$$y = g(x) = \frac{(x - 1)(x + 1)}{x - 1}$$

$$y = g(x) = \begin{cases} x + 1, & x \neq 1 \\ \text{정의되지 않음}, & x = 1 \end{cases}$$

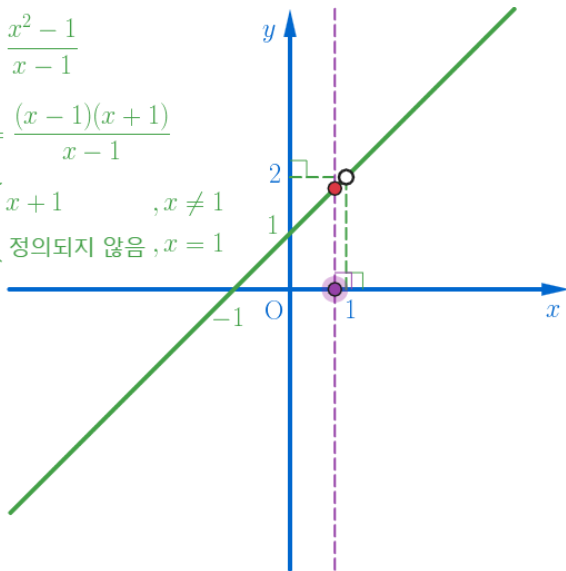


Discontinuity for $g(x) = \frac{x^2 - 1}{x - 1}$ at $x = 1$

$$y = g(x) = \frac{x^2 - 1}{x - 1}$$

$$y = g(x) = \frac{(x - 1)(x + 1)}{x - 1}$$

$$y = g(x) = \begin{cases} x + 1, & x \neq 1 \\ \text{정의되지 않음}, & x = 1 \end{cases}$$

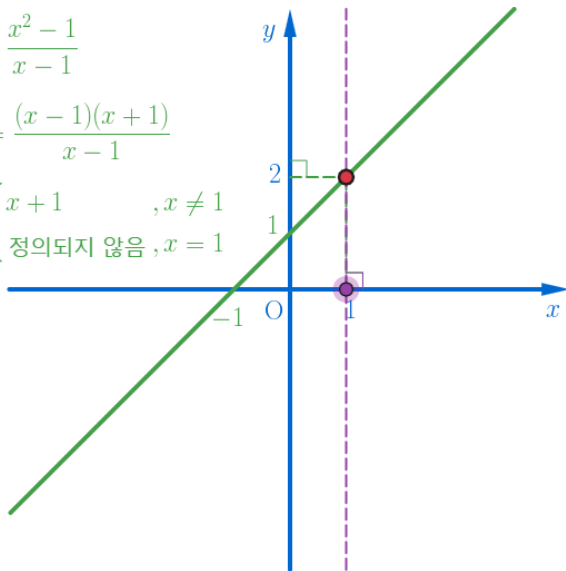


Discontinuity for $g(x) = \frac{x^2 - 1}{x - 1}$ at $x = 1$

$$y = g(x) = \frac{x^2 - 1}{x - 1}$$

$$y = g(x) = \frac{(x - 1)(x + 1)}{x - 1}$$

$$y = g(x) = \begin{cases} x + 1, & x \neq 1 \\ \text{정의되지 않음}, & x = 1 \end{cases}$$



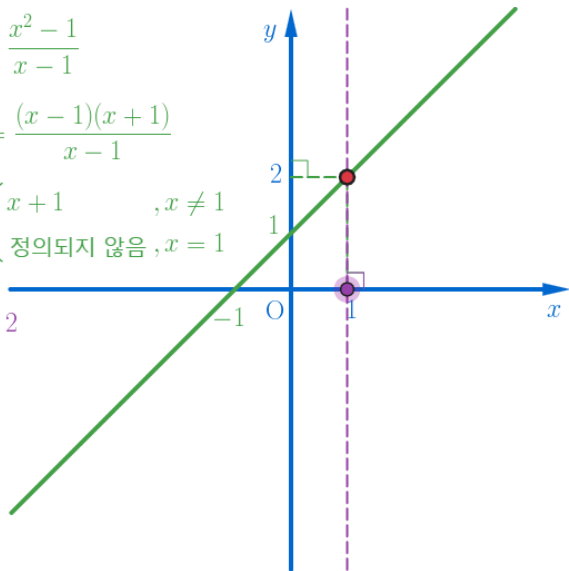
Discontinuity for $g(x) = \frac{x^2 - 1}{x - 1}$ at $x = 1$

$$y = g(x) = \frac{x^2 - 1}{x - 1}$$

$$y = g(x) = \frac{(x - 1)(x + 1)}{x - 1}$$

$$y = g(x) = \begin{cases} x + 1, & x \neq 1 \\ \text{정의되지 않음}, & x = 1 \end{cases}$$

$$\lim_{x \rightarrow 1} g(x) = 2$$



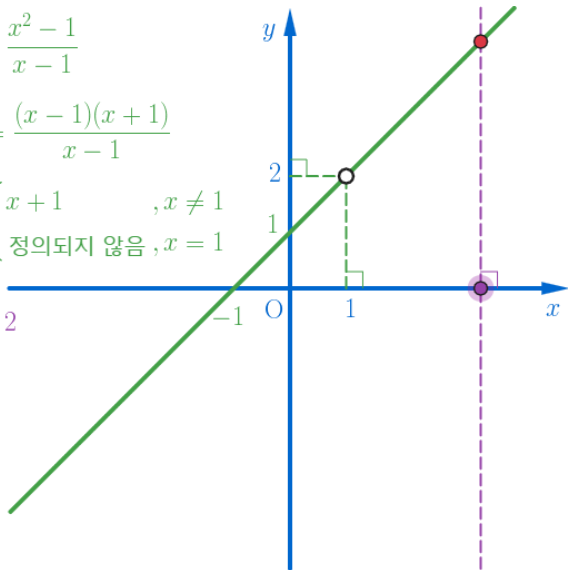
Discontinuity for $g(x) = \frac{x^2 - 1}{x - 1}$ at $x = 1$

$$y = g(x) = \frac{x^2 - 1}{x - 1}$$

$$y = g(x) = \frac{(x - 1)(x + 1)}{x - 1}$$

$$y = g(x) = \begin{cases} x + 1, & x \neq 1 \\ \text{정의되지 않음}, & x = 1 \end{cases}$$

$$\lim_{x \rightarrow 1} g(x) = 2$$



Discontinuity for $g(x) = \frac{x^2 - 1}{x - 1}$ at $x = 1$

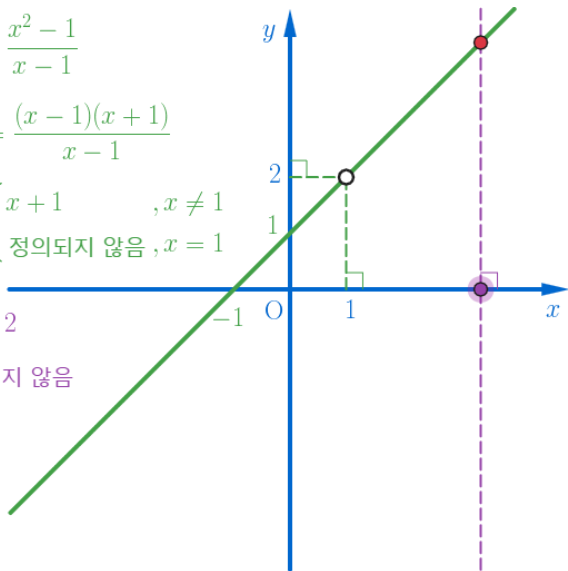
$$y = g(x) = \frac{x^2 - 1}{x - 1}$$

$$y = g(x) = \frac{(x - 1)(x + 1)}{x - 1}$$

$$y = g(x) = \begin{cases} x + 1, & x \neq 1 \\ \text{정의되지 않음}, & x = 1 \end{cases}$$

$$\lim_{x \rightarrow 1} g(x) = 2$$

$g(1)$ 정의되지 않음



Discontinuity for $g(x) = \frac{x^2 - 1}{x - 1}$ at $x = 1$

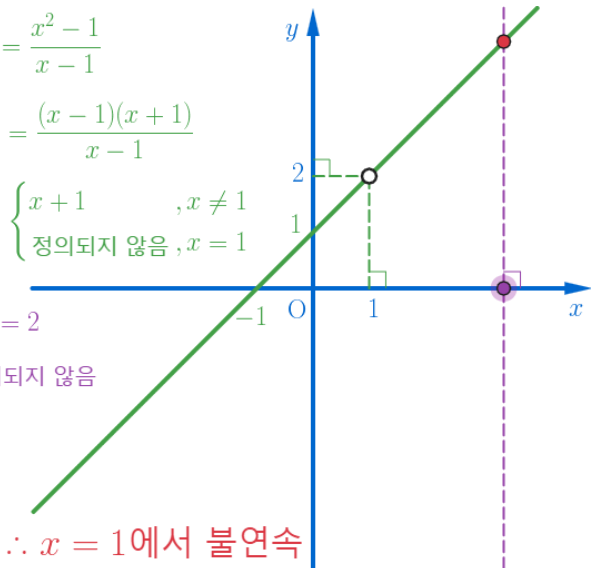
$$y = g(x) = \frac{x^2 - 1}{x - 1}$$

$$y = g(x) = \frac{(x - 1)(x + 1)}{x - 1}$$

$$y = g(x) = \begin{cases} x + 1, & x \neq 1 \\ \text{정의되지 않음}, & x = 1 \end{cases}$$

$$\lim_{x \rightarrow 1} g(x) = 2$$

$g(1)$ 정의되지 않음



$\therefore x = 1$ 에서 불연속

Discontinuity for $g(x) = \frac{x^2 - 1}{x - 1}$ at $x = 1$

AlgeMath: <http://me2.do/FLJjnfkU>

YouTube: <https://youtu.be/iWwIWhSEddM>

Click or paste URL into the URL search bar, and you can see a picture moving.