

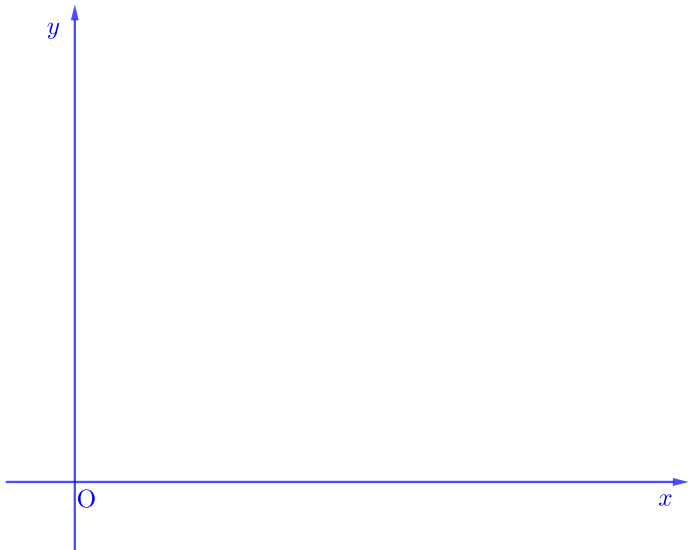
When there are two points on $y = \frac{1}{x}$, zoom in to x direction to make two points symmetrical to $y = x$

$y = \frac{1}{x}$ 위에 두 점이 있을때, 두 점이 $y = x$ 에 대칭이 되도록 x 축 방향으로 확대하여라.

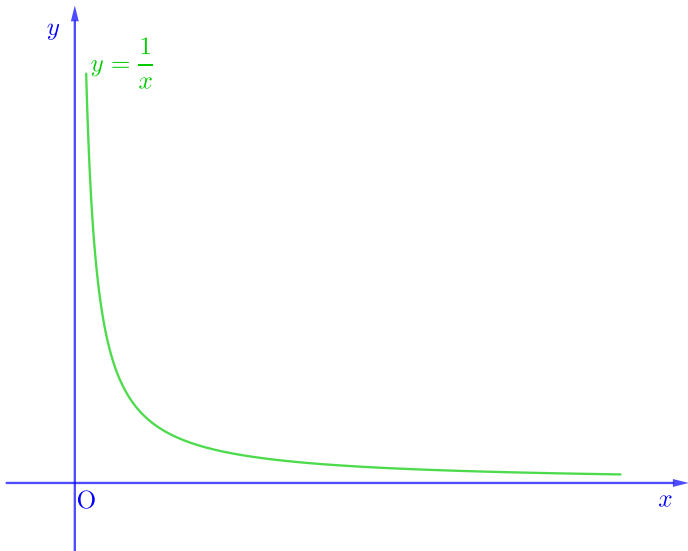
(When there are two points on $y = \frac{1}{x}$, zoom in to x direction to make two points symmetrical to $y = x$)

When there are two points on $y = \frac{1}{x}$, zoom in to x direction to make two points symmetrical to $y = x$

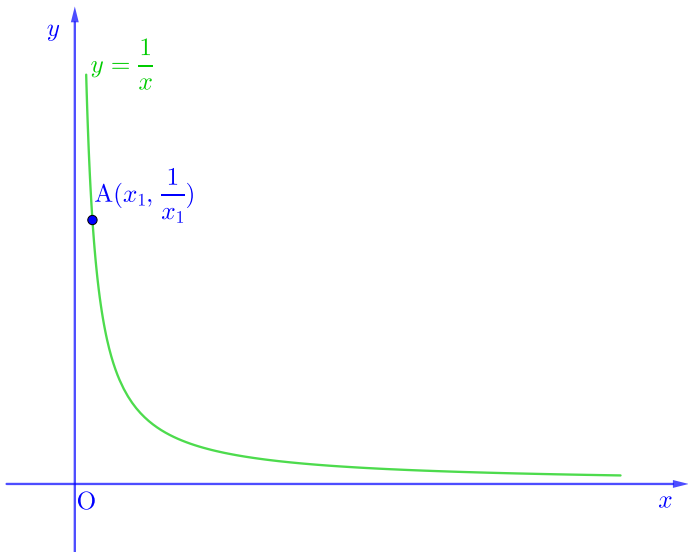
When there are two points on $y = \frac{1}{x}$, zoom in to x direction to make two points symmetrical to $y = x$



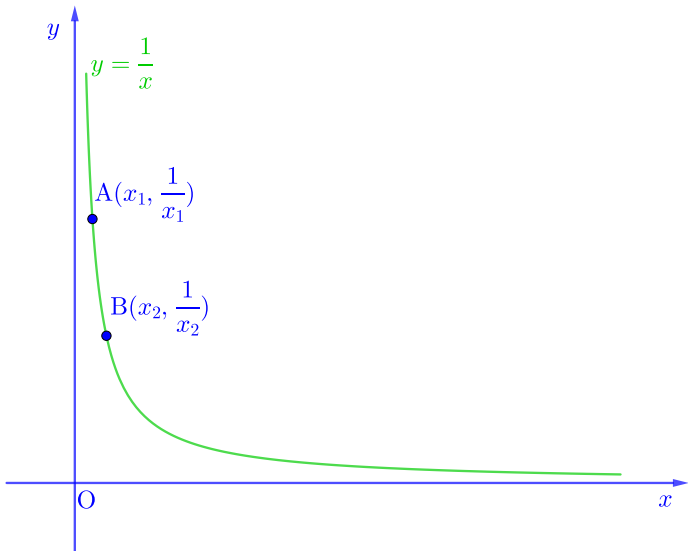
When there are two points on $y = \frac{1}{x}$, zoom in to x direction to make two points symmetrical to $y = x$



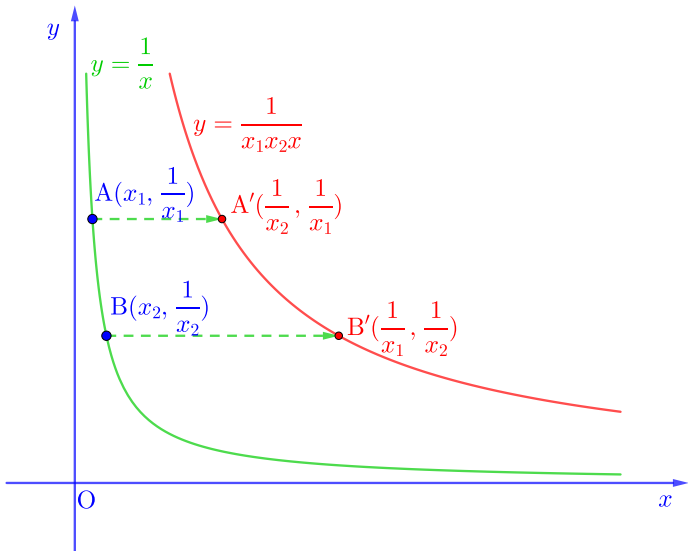
When there are two points on $y = \frac{1}{x}$, zoom in to x direction to make two points symmetrical to $y = x$



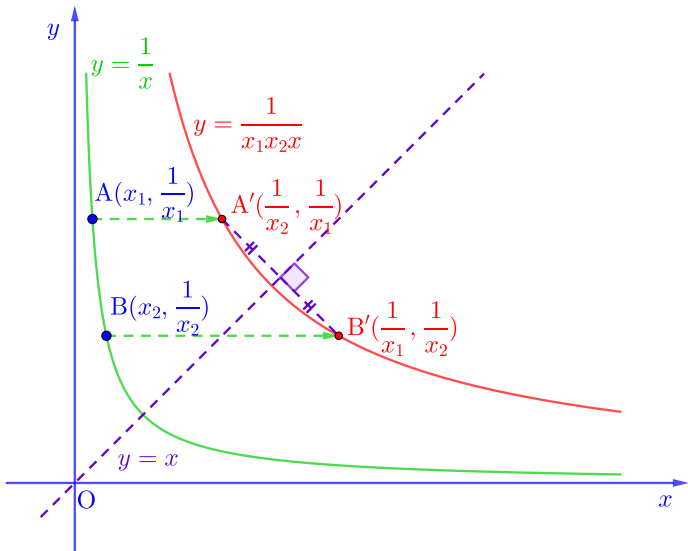
When there are two points on $y = \frac{1}{x}$, zoom in to x direction to make two points symmetrical to $y = x$



When there are two points on $y = \frac{1}{x}$, zoom in to x direction to make two points symmetrical to $y = x$



When there are two points on $y = \frac{1}{x}$, zoom in to x direction to make two points symmetrical to $y = x$



When there are two points on $y = \frac{1}{x}$, zoom in to x direction to make two points symmetrical to $y = x$

