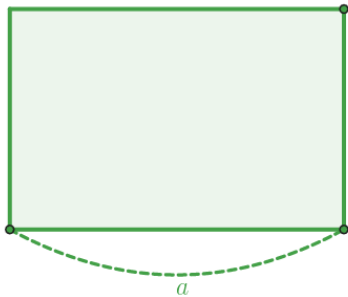
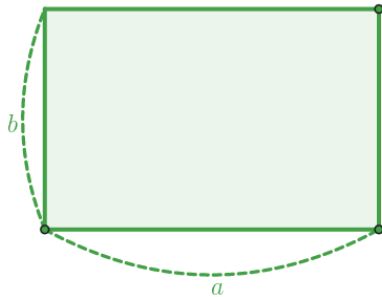


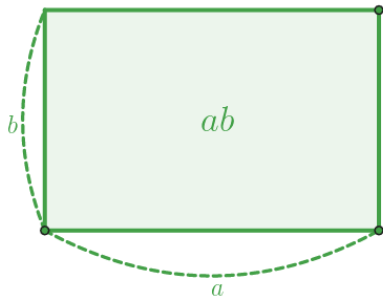
기하평균

(Geometric Mean)

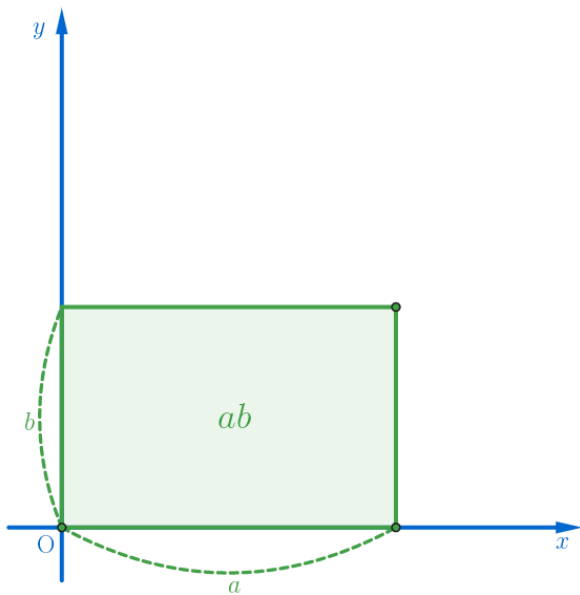




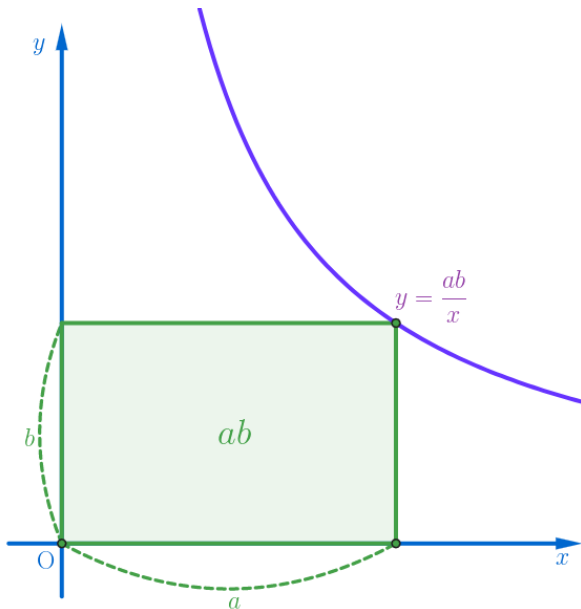




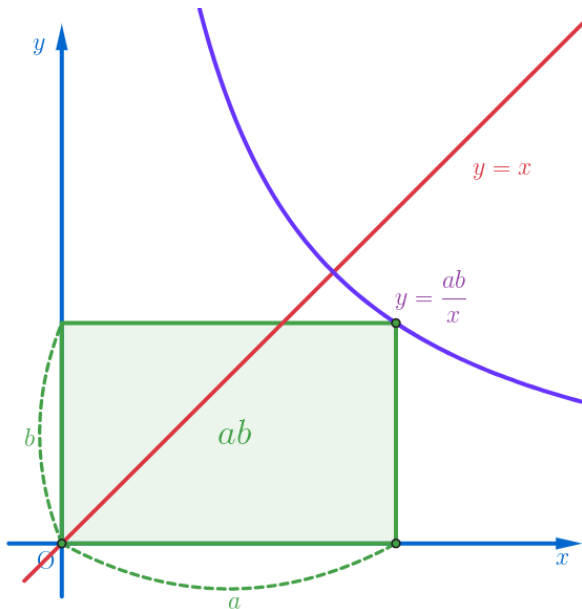
Geometric Mean



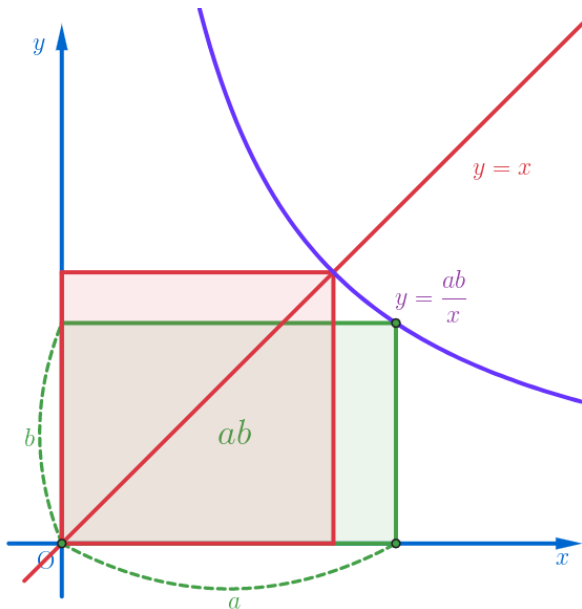
Geometric Mean



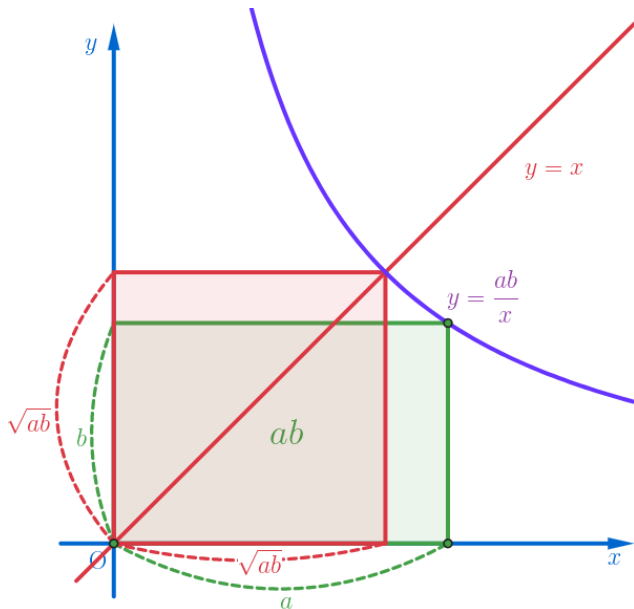
Geometric Mean



Geometric Mean



Geometric Mean



The geometric mean is a type of mean or average, which indicates the central tendency or typical value of a set of numbers by using the product of their values . The geometric mean is defined as the n th root of the product of n numbers.

The geometric mean is a type of mean or average, which indicates the central tendency or typical value of a set of numbers by using the product of their values . The geometric mean is defined as the n th root of the product of n numbers.

$$G = \sqrt[n]{a_1 \cdots a_n} \quad (a_1, \cdots, a_n > 0)$$

The geometric mean is a type of mean or average, which indicates the central tendency or typical value of a set of numbers by using the product of their values. The geometric mean is defined as the n th root of the product of n numbers.

$$G = \sqrt[n]{a_1 \cdots a_n} \quad (a_1, \cdots, a_n > 0)$$

The geometric mean of two numbers, a and b , is the length of one side of a square whose area is equal to the area of a rectangle with sides of lengths a and b .

AlgeoMath: <http://me2.do/xIdBxFOq>

YouTube: <https://youtu.be/yEYNf8yUsj4>

Click or paste URL into the URL search bar, and you can see a picture moving.